

LANCASTER COUNTY LIVESTOCK MARKET AUCTION

Lancaster Livestock

LANCASTER, PA
JULY 11, 1995

Cattle	Calves	Hogs	Sheep	Goats
MONDAY'S AUCTION	819	58	168	384
LAST MONDAY	540	51	189	267
LAST YEAR	762	92	386	974

CATTLE: Slaughter steers fully steady, instances 50-75 higher on High Choice and Prime; slaughter heifers 50-100 higher; cows steady; bullocks fully steady; bulls firm to 1.00 higher, instances 2.00 higher on Yield grade 1. Supply included 59 percent slaughter steers, 19 percent slaughter heifers, 10 percent cows and 12 percent bulls.

SLAUGHTER STEERS: High Choice and Prime 2-4 1225-1430 lb 65.75-69.10; Choice 2-3 few 4 1075-1450 lb 63.50-66.00; Select and low Choice 2-3 1050-1450 lb 60.50-63.75.

HOLSTEINS: High Choice and Prime 2-3 1270-1610 lb 57.50-60.25; Choice 2-3 1240-1600 lb 54.75-57.50; Select 1-2 1200-1350 lb 49.25-53.00.

SLAUGHTER HEIFERS: High Choice and Prime 2-3 1050-1250 lb 63.50-64.60; Choice 2-3 975-1325 lb 60.00-63.50; Select 1-3 950-1350 lb 54.00-59.00.

COWS: LO DRESSING BULK HI DRESSING Breaking Utility and Commercial 2-3 44.00-43.00 Cutter and Boning Utility 1-3 37.00-39.00 39.00-41.00 Canner and low Cutter 32.00-34.00 34.00-37.50.

BULLOCKS: Select 1-2 1100-1400 lb 49.25-55.00; few Choice 2-3 1100-1400 lb 56.00-61.00.

BULLS: Yield grade 1 1100-2000 lb 50.00-55.50, few 55.50-59.25, with 10 head 59.50-64.25; Yield grade 2 1000-1500 lb 47.75-50.00.

CALVES: Vealers not fully tested; slaughter calves 5.00 higher. Demand fair for Holstein bulls to return to farm.

SLAUGHTER CALVES: Good and Choice 300-550 lb 70.00-80.00.

RETURNED TO FARM: Few 90-110 lb Holstein bulls 88.00-120.00; small frame 70-90 lb 45.00-80.00.

HOGS: Barrows and gilts 1.00-1.50 higher. US 1 2 220-260 lb 47.00-47.

50 US 2-3 210-260 lb 43.50-45.50

SOWS: Firm to 1.00 higher. US 1-3 300-500 lb 24.00-26.00 500-625 lb 26.00-28.00

BOARS: All weights 20.00-22.00

SHEEP: Slaughter lambs 1.00-3.00 higher; slaughter ewes firm to mostly 5.00 higher. Supply included 70 percent slaughter lambs with the balance slaughter ewes.

SLAUGHTER LAMBS: Choice 1-3 85-110 lb 88.00-93.00, 60-80 lb

Vintage Livestock

PARADISE, PA
JULY 11, 1995

Cattle	Calves	Sheep	Goats
TODAY	694	1186	3
LAST TUESDAY	348	723	0
LAST YEAR	841	983	13

CATTLE... USDA .. Supply included 36% slaughter steers and 56% cows ..slaughter steers mostly steady, instances .50 lower, sl. heifers not fully tested, cows 1.00 to 1.50 lower, bulls weak to 1.00 lower.

SLAUGHTER-STEERS: High Choice and Prime 2-4 1200/1425 lbs. 66.75-67.75, Choice and Prime 2-3 1100/1400 lbs. 67.50-68.75, couple 69.00-69.50, Choice 2-3 few 4 1075/1450 lbs. 63.60-66.00, few 66.25-67.00, Select and Low Choice 2-3 1050/1375 lbs. 60.00-63.50, few Select 1-2 1025/1300 lbs. 58.60-60.00.

HOLSTEINS: High Choice and Prime 2-3 1380/1420 lbs. 58.10-58.85, Choice 2-3 1250/1575 lbs. 54.60-56.60.

HEIFERS: Select and Low Choice 2-3 880/1235 lbs. 56.75-61.75.

COWS: Breaking Utility and Commercial 2 bulk 38.25-40.50, high dressing 40.50-43.50, Commercial 2-4 bulk 36.00-38.00, Cutter and Boning Utility 1-3 low dressing 36.00-38.00, bulk 38.00-40.00, Canner and Low Cutter 1-2 low dressing 31.00-34.00, bulk 34.00-37.00.

BULLS: Yield Grade No. 1 1500/2100 lbs. 48.75-51.50, No. 2 1300/1700 lbs. 44.75-48.50.

CALVES... Vealers 5.00 to 8.00 lower, although weights over 120 lbs. not fully tested. Supply included 931 in graded sale of which 86% sold to return to farm. The 931 calves in the graded sale averaged 95.64 lbs. and 67.43 per hundred and 64.49 per head.

VEALERS: Good and Choice 80/110 lbs. 24.00-32.00, couple 180/200 lbs.

92.00-96.00, 40-60 lb 94.00-103.00.

SLAUGHTER EWES: Choice 2-3 45.00-60.00; Utility and Good 1-2 35.00-50.00, few 50.00-60.00, 2-3 20.00-35.00.

GOATS: All goats sold by the head. Billies: Large 80.00-105.00, few 120.00-140.00; Small and Medium 50.00-80.00.

Mutton: Large 70.00-90.00; Medium 50.00-70.00.

Nannies: Medium and Large 40.00-60.00.

Kids: Choice 30.00-35.00; Good 22.00-30.00.

Lancaster Livestock Auction

Wednesday's market report has been discontinued until further notice because of insubstantial receipts.

Morrison Cove Livestock

Martinsburg, Pa.
July 10, 1995

Report supplied by auction

CATTLE 185. STEERS CHOICE 63.00-67.00; **GOOD** 60.00-62.75. **HEIFERS:** CHOICE 60.00-66.00; **GOOD** 57.00-60.00.

COWS: UTILITY & COMMERCIAL 39.00-44.00; **CANNER & LOW CUTTER** 32.00-42.00.

BULLOCKS: 52.00-56.00. **BULLS:** YIELD GRADE NO. 1 45.00-58.00.

FEEDER CATTLE: STEERS 60.00-70.00; **BULLS** 55.00-62.00; **HEIFERS** 45.00-60.00.

CALVES 218. PRIME, NO MKT. TEST: CHOICE 80.00-90.00; **GOOD** 70.00-80.00; **STANDARD** 15.00-40.00; **HOLSTEIN BULLS** 90-130 LBS. 80.00-100.00; **HOLSTEIN HEIFERS** 90-130 LBS. 120.00-170.00.

HOGS: 212. US NO. 1-2 47.00-48.00; US NO. 1-3 45.00-46.50.

SOWS: US NO. 1-3 26.00-32.00. **BOARS:** 21.00-27.00.

FEEDER PIGS: 64 HEAD. US#1&3 20-50 LBS. 10.00-22.00.

SHEEP: 32 HEAD. CHOICE LAMBS 80.00-90.00; **GOOD LAMBS** 70.00-80.00; **SLAUGHTER EWES** 21.00-33.00.

GOATS: 17.00-69.00.

50.00-70.00, Standard and Low Good 55/75 lbs. 12.00-22.00.

RETURNED TO FARM: 355 head 95/125 lbs. Holstein bulls 75.00-82.00, 25 head 110/115 lbs. 86.00, 55 head 90/95 lbs. 63.00-69.00, 25 head 90 lbs. 51.00 and 60 head 80/85 lbs. 30.00-36.00, 70 head small frame 100/115 lbs. 40.00, and 70 head 90/95 lbs. 35.00; 55 head 90/120 lbs. Holstein heifers 170.00-178.00, 25 head 80/85 lbs. 115.00 and 12 head 70/75 lbs. 60.00, 6 head small frame 90/105 lbs. 122.00-145.00, 10 head 80/85 lbs. 72.00 and 20 head 65/70 lbs. 40.00.

SHEEP...NO MARKET TEST!

GOATS...NO MARKET TEST!

LEBANON VALLEY LIVESTOCK MARKET, INC.

1 mile East of
Fredericksburg
along Rt. 22

PHONE
JONESTOWN
(717) 865-2881

Flea Market Auction
every Tuesday at 12:30,
Tools, Eggs, Produce,
Etc.
Buyers & Sellers
Welcome

HAY, STRAW, & CORN

— SALE —

Sale Starts
Every Friday At 10 AM

GREEN DRAGON MARKET & AUCTION

955 N. State St.
Ephrata, Pa. (717) 738-1117
1 mile North of Ephrata on N. State St.
Out of State Buyers-Cash or Certified Check Only

B&R CATTLE CO.

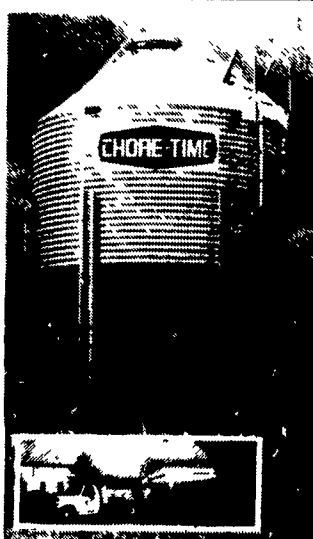
RD 1, Marietta, PA
17547

Office Phone:
(717) 653-8164

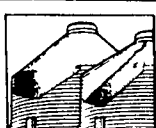
Specializing in
Stockers &
Feeders

JOHN BOWMAN
ph. (717) 653-5728
RON RANCK
pb. (717) 656-9849

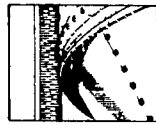
Get more capacity and better service from Chore-Time's New Next Generation bin



Call for pricing on bins assembled and delivered to your farm



High Capacity 40' roof (left) allows more storage and stays cleaner than conventional 30' roof (right)



Hydro-Shield™ Weather Guard prevents water from running down hopper



ACCESS PLUS™ permits easy clean out of the bin from the ground.

Contracts Available Call For Information

- Broilers
 - Turkey
 - Breeder
 - Hog Finishing
- Call For Our Free Brochure
"What Is Contract Production?"

Replace your bulbs and save electricity with

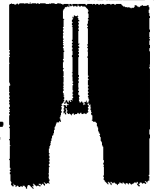
SCREW IN FLUORESCENT LIGHTS
5-7-9 Watts 5.49 ea. 13 Watts 5.79 ea.

Light Bulbs 25 to 100 Watts 34¢ Ea.
Brass Base - 5000 Hrs.

In Stock-36" & 48" Wide Kraft Paper

Authorized Northeast Agri Systems, Inc.

Northeast Agri Systems, Inc.
Flyway Business Park
139A West Airport Road
Uitz, PA 17543
Ph. (717) 569-2702
1-800-673-2580



Delmarva Store
305 University Ave
Federalsburg, MD
(Formerly Long Lumber)
1-800-733-4361

Lancaster County Weekly

LANCASTER, PA
JULY 14, 1995

Cattle	Calves
THIS WEEK	2700
LAST WEEK	1925
LAST YEAR	1988
	1619
	2908

CATTLE: Slaughter steers weak to 50 lower, instances 1.00 lower; slaughter heifers 50-100 higher, although not fully tested after Monday; cows 1.00-2.00 lower; bullocks steady; bulls closed steady. Supply included 51 percent slaughter steers, 7 percent slaughter heifers, 30 percent cows, 6 percent bulls, with the balance feeders.

SLAUGHTER STEERS: High Choice and Prime 2-4 1150-1565 lb 65.35-67.75, several on Monday 67.75-69.10; Choice and Prime 2-3 1100-1400 lb 68.00-68.75, couple 69.00-69.50; Choice 203 few 4 1050-1430 lb 62.50-66.00, several early part of week 66.00-67.00; few Choice 3 1450-1550 lb 61.00-64.00, couple 1570-1625 lb 57.25-58.50; Select and low Choice 203 1050-1450 lb 59.25-63.50; few Select 1-2 1025-1350 lb 58.00-60.00.

HOLSTEINS: High Choice and Prime 2-3 1270-1610 lb 57.50-60.25; Choice 203 1175-1600 lb 54.25-57.50; Select 1-2 1200-1400 lb 50.00-54.00; couple lots Standard 1-2 1375-1475 lb 45.00-47.00.

SLAUGHTER HEIFERS: High Choice and Prime 2-3 1050-1250 lb 63.50-64.60; Choice 2-3 975-1325 lb 60.00-63.50; Select 1-3 950-1350 lb 54.00-59.00.

COWS: Breaking Utility and Commercial 2-3, 37.25-40.00, 40.00-43.50; Commercial 3-4 33.50-37.50; Cutter and Boning Utility 1-3 35.50-37.00, 37.00-39.00, 39.00-40.50; Canner and low Cutter 1-2 31.50-33.00, 33.00-36.75.

BULLS: Yield grade 1 1300-2100 lb 47.00-51.50 after Monday being mainly 50.00-55.50, few 55.50-59.25, 10 head 59.50-64.25; Yield grade 2 1000-1600 lb closed at 43.75-48.00.

CALVES: Vealers 5.00-8.00 lower; slaughter calves 5.00 higher. Demand fair for Holstein heifers, very narrow for Holstein bulls to return to farm.

VEALERS: High Good and low Choice 170-355 lb 65.00-81.00, 80-110 lb 24.00-32.00; Standard and low Good 55-85 lb 12.00-27.00.

SLAUGHTER CALVES: Good and Choice 300-550 lb 70.00-80.00.

RETURNED TO FARM: Bulk 90-125 lb Holstein bulls 54.00-82.00, few 82.00-86.00, 75-90 lb 30.00-65.00; small frame 90-115 lb 30.00-60.00, 70-85 lb 25.00-35.00. Bulk 90-120 lb Holstein heifers 130.00-170.00, with 55 head 170.00-178.00, 25 head 80-85 lb 115.00; small frame 80-110 lb 72.00-125.00, 20 head 65-70 lb 40.00.



New Holland Livestock

LANCASTER, PA
JULY 13, 1995

Cattle	Calves	Sheep	Goats
TODAY	1098	683	253
LAST THURSDAY	1043	845	194
LAST YEAR	1262	614	283

CATTLE: Slaughter steers steady to 50 lower, instances 1.00 lower; slaughter heifers not tested; cows 50-1.00 lower; bulls 1.00-2.00 lower. Supply included 59 percent slaughter steers and 32 percent cows.

SLAUGHTER STEERS: Choice 2-3 few 4 1050-1425 lb 62.50-66.25, mainly 63.25-65.75; High Choice and Prime 2-4 1150-1465 lb 65.35-67.50; few Choice 2 1100-1325 lb 68.00-69.25; few Choice 3 1450-1550 lb 61.00-64.00, couple 1570-1625 lb 57.25-58.50; Select and low Choice 2-3 1075-1425 lb 59.25-62.50; few Select 1-2 1050-1350 lb 58.00-60.00.

HOLSTEINS: Choice 2-3 1175-1585 lb 54.25-57.00; few Select 2-3 1200-1400 lb 50.00-54.00; couple lots Standard 1-2 1375-1475 lb 45.00-47.00.

COWS: Breaking Utility and Commercial 2-3 37.25-39.75, 40.00-41.50; Commercial 3-4 33.50-37.50; Cutter and Boning Utility 1-3 35.50-37.00, 37.00-39.00, 39.00-40.50; Canner and low Cutter 1-2 31.50-33.00, 33.00-36.75.

BULLS: Yield grade 1 1300-2000 lb 47.00-49.75, individual 1665 lb 53.00; Yield grade 2 1200-1600 lb 43.75-47.50.

CALVES: Vealers steady to 5.00 lower. Demand very narrow for calves to return to farm.

VEALERS: High Good and low Choice 170-355 lb 65.00-81.00, 80-110 lb 27.00-32.00; Standard and low Good 60-85 lb 20.00-27.00.

RETURNED TO FARM: Bulk 90-125 lb Holstein bulls 54.00-80.00, few 80.00-85.00, 75-90 lb 40.00-65.00; small frame 90-115 lb 30.00-60.00, 70-85 lb 25.00-35.00; small supply 90-120 lb Holstein Heifers 130.00-150.00, couple 150.00-170.00; small frame 80-110 lb 75.00-125.00.

SHEEP: Slaughter lambs firm to 5.00 higher; slaughter ewes steady. Supply included 80 percent slaughter lambs with the balance slaughter ewes.

SLAUGHTER LAMBS: Choice 1-2 30-45 lb 110.00-132.00, 50-75 lb 98.00-112.00, 75-110 lb 93.00-98.00.

SLAUGHTER EWES: Choice 203 35.00-50.00; Utility and Good 203 25.00-35.00, Cull 19.00-25.00.

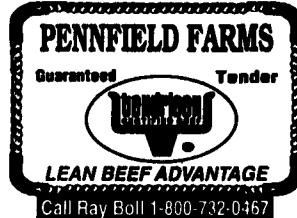
GOATS: All Goats sold by the head. Billies: Large 90.00-100.00, ten head 100.00-114.00, and eight head 124.00-146.00.

Mutton: Large 70.00-85.00; Medium 55.00-70.00.

Nannies: Large 45.00-65.00; Medium 35.00-45.00.

Yearlings: Good and Choice 38.00-45.00.

Kids: Good and Choice 22.00-31.00; few Utility 11.00-22.00.



VINTAGE SALES STABLES, INC.

SALE TUESDAYS

10:30 A.M.

SLAUGHTER CATTLE AUCTION-
STEERS, BULLS, HEIFERS,
COWS, FEEDER CATTLE

7:00 P.M.

CALVES, SHEEP, GOATS
GET CALVES IN EARLY-
OUR STATE GRADER
STARTS AT 10:30 A.M.

Selling Feeders Every Tuesday
At Approx. 1 PM

FOR MORE INFORMATION CONTACT

L. ROBERT FRAME, SR., PRESIDENT
BUS (717) 442-4181 BUS (717) 768-8204
HOME (215) 458-8518
IRWIN MARTIN, FIELD REP.
(717) 733-7434
KENNETH E. HERSHEY, FIELD REP.
(717) 442-4874

TRUCKING SERVICE
AVAIL-LOCAL &
LONG DISTANCE
(RT. 30, 10 MILES EAST
OF LANCASTER IN
PARADISE, PA)

