

## Marshall, Va. Horse Sale

Second, Fourth Saturday Each Month  
July 8, 1995

Report Supplied by Auction  
165 HEAD, SOLD BY HEAD;  
WEIGHTS ESTIMATED.  
RIDING HORSES: AVG. TO GOOD  
QUALITY 925-1175 LBS. 560.00-770.00,  
800-900 LBS. 420.00-560.00; BETTER  
QUALITY 950-1175 LBS.  
800.00-1400.00; 800-900 LBS.  
600.00-700.00; EXCELLENT QUALITY  
1000-1200 LBS. 1500.00-2600.00;  
1200-1300, 2 AT 1900.00 AND 2200.00.  
RIDING PONIES: SMALL  
270.00-330.00; LARGE 330.00-495.00, 1  
AT 750.00.  
LOOSE HORSES: AVG. TO GD.  
FLESH 925-1200 LBS. 540.00-830.00, 1  
AT 1050.00; 800-900 LBS. FEW  
380.00-485.00.

## New Holland Dairy

New Holland Sales Stables  
Wednesday, July 12, 1995  
Report supplied by auction  
DAIRY COWS 56; HEIFERS 58; 8  
BULLS. MARKET STRONGER.  
LOCAL FRESH COWS  
750.00-1100.00.  
LOCAL SPRINGERS 485.00-925.00.

FRESH HEIFERS 560.00-1200.00.  
UPSTATE LOADS FRESH  
675.00-1310.00.  
LARGE SPRINGING HEIFERS  
975.00-1125.00, SMALL 450.00-925.00.  
SHORT BRED HEIFER 510.00-65.00.  
OPEN BREEDING AGE HEIFERS  
560.00-660.00.  
SMALL OPEN HEIFERS  
435.00-500.00.  
GRADE BULLS 685.00-700.00.  
PUREBRED BULLS 610.00-775.00.

## Buffalo Valley Produce Mifflinburg R3 July 10, 1995

Sale every Tuesday and Thursday  
Report Supplied by Auction  
CANTALOUPE: .60-2.00/EA.  
BEETS: 1/2 BU. 2.00-4.00, 1 1/4 BU.  
6.00-8.00, BUNCH .20-.30.  
WATERMELONS: CRIMSON-  
ROYAL SWTS. 2.00-3.75, SUGAR  
BABY-YELLOW DOLLS 1.50-2.50.  
TOMATO: 25 LB. VINE RIPE 12.50-  
22.00.  
HONEY DEWS: 1.50-2.50.  
PEACHES: 38 LB. 12.00-15.00, 1/2  
BU. 8.00-18.00.  
ZUCCHINI: GREEN 2.00-5.00, YEL-  
LOW 2.00-5.00.  
SWT. CORN: 1.10-2.50 DOZ.  
BEANS: GREEN 1/2 BU. 3.00-7.00, 1  
1/4 BU. 10.00-18.00, WAX 1/2 BU. 3.00-  
8.00, 1 1/4 BU. 12.00-20.00.  
CHERRIES: OX HEART & QUEEN

ANN 1.10-2.05/LB.  
BLUEBERRIES: PT. 1.40-2.00, QT.  
2.50-3.50.  
ONIONS: SWT. SPANISH 50 LB.  
9.00-12.00, WHITE ONIONS 10.00-  
14.00.  
CUCUMBER: 1 1/4 BU. 4.00-10.00,  
SUPER SELECT SELECT 4.00-6.00.  
RASPBERRY: BLACK PT. 1.50-  
2.00, QT. 2.50-4.00, RED PT. 2.00-4.00.  
POTATOES: RED & WHITE A's  
5.00-9.00, RED & WHITE B's 9.00-16.00.  
BELL PEPPERS: J 1/4 BU. 9.00-  
15.00.  
AUCTIONS EVERY TUESDAY AT  
10:00 A.M.

## Pennsylvania Livestock Auction Waynesburg, Pa.

Thursday, July 13, 1995  
Report Supplied by Auction  
CATTLE: SL. COWS: UTILITY &  
COMMERCIAL 39.50-44.50; CUTTER  
& BONING UTILITY 35.00-40.00; CAN-  
NER & LOW CUTTER 30.00-40.00;  
SHELLS 30.00 & DOWN. BULLS:  
YIELD GRADE 1 1500#-2000# 41.00-  
51.50, YIELD GRADE 2 1000#-1400#  
44.00-52.50.  
FEEDER STEERS: M & L 1 300-500#  
50.00-76.00; 250-280# 65.00-82.50; M  
600-900# 50.00-70.00. HEIFERS M 1 & L  
1 300-500# 50.00-68.00; L 1 400-650#  
48.00-65.00; BULLS M & L 1 300-620#  
50.00-72.50.

Lancaster Farming, Saturday, July 15, 1995 \$19

CALVES: VEAL PRIME 82.00-  
87.00; CHOICE 70.00-81.00; GOOD  
50.00-67.00.  
FARM CALVES: #1 HOLSTEIN  
BULLS 90-120 #FEW 60.00-90.00; #2  
HOLSTEIN BULLS 80-100# FEW 55.00-  
105.00; BEEF X BULL & HFRS./HD.  
50.00-110.00.  
HOGS: BARROWS & GILTS #1-2  
210-255# 41.00-45.50; #2-3 255-280#  
31.00-40.00; SOWS #1-3 300-500# 24.00-

29.50.  
FEEDER PIGS: 1-3 25-35# 10.00-  
24.00/HD.  
LAMBS: HIGH CHOICE 40-75#  
70.00-92.50; CHOICE 90-105# 78.00-  
88.00; FEEDER LAMBS GOOD 70.00-  
84.00; SHEEP 21.00-38.00.  
GOATS: LARGE 60.00-75.00/HD.;  
MEDIUM 30.00-51.00/HD.; SMALL  
10.00-34.00/HD.  
HORSES: 35.00-60.00; PONIES  
28.00-60.00.

## NAJ Seeks Multiple Component Pricing In Farm Bill

REYNOLDSBURG, Ohio—  
"We seek nothing less than  
national implementation of multi-  
ple component pricing by the year  
2000," said Ted Luther, president  
at the 1995 Annual Meeting of  
National All-Jersey Inc. held July  
1, in Albany, N.Y.

President Luther explained to  
members that multiple component

pricing (MCP) has impacted all  
Jersey breeders, whether they  
receive direct MCP payments or  
not by increasing the value of all  
Jersey cows.

To accomplish the goal of 100  
percent MCP, NAJ is concentrat-  
ing on promoting a MCP provi-  
sion in the 1995 Farm Bill current-  
ly being drafted by Congress.

According to  
Michael Brown, general  
manager of NAJ, there  
is broad industry sup-  
port for MCP in this  
farm bill from both the  
processor and producer  
side of the industry.  
NAJ is working to  
ensure the views of  
these groups are part of  
the final bill.

In his CEO report,  
Calvin Covington  
reported, "During the  
year, USDA recom-  
mended multiple com-  
ponent pricing for six  
federal orders. The  
Upper Midwest—the  
traditional dairy  
heartland—is included  
in these orders. Final  
decisions are expected  
from USDA at any  
moment. When issued,  
almost 54 percent of all  
producer milk regulated  
by federal orders will be  
priced under some type  
of multiple component  
pricing."

In other business,  
NAJ President Ted  
Luther was reelected  
and Dan Bansen, Day-  
ton, Ore. was reap-  
pointed and named vice  
president. William  
Mason, Buhl, Idaho was  
reelected for a four-year  
term.

"Contact Your Local  
Independent Alfa  
Laval Agri Dealer  
For More Information"

J.B. Zimmerman  
& Sons, Inc.  
P.O. Box 337,  
Lancaster County  
Blue Ball, PA 17506  
717-354-8030

Erb and Henry  
Equipment, Inc.  
22-26 Henry Avenue  
New Berlinville, PA 19545  
215-367-2169

Franklin Hess  
Ent., Inc.  
Rt. 2, Box 130  
Orangeville, PA 17859  
717-925-6939

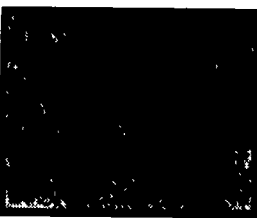
Witmer Implement  
Service  
1896 Bedford Rd.  
Shippensburg, PA 17257  
717-532-6139

Potomac Valley  
Supply  
11606 Greencastle Pike  
Hagerstown, MD 21740  
301-223-6877

Bennett Machine  
Company  
1601 So. Dupont Blvd.  
Milford, DE 19963  
302-422-4837

Peoples Sales  
and Service  
Oakland Mills, PA 17076  
717-463-2735  
717-436-2735

H.B. Duvall, Inc.  
901 E. Patrick St.  
Frederick, MD 21701  
301-662-1125  
Out of State: 800-423-4032



**WANTED:**  
**PALLET  
RACKS**  
**717-865-7440**

**LONG DISTANCE  
PHONE SERVICE**  
ONLY 7¢ cents/  
minute within USA  
Business & resident use  
No sign up costs  
No minimum usage  
Tel-Com  
Phone Service  
Lebanon, Pa.  
Sales People Wanted  
Call 1 800-222-1495

# It only takes one step to change your world forever.

## Introducing MilkMaster™. Stanchion dairying will never be the same.

To remain competitive in today's changing times, you must  
continuously explore new ways to make your operation more  
productive. The revolutionary MilkMaster™ from Alfa Laval  
Agri™ is your answer.

The greatest innovation in stanchion milking in over a decade,  
MilkMaster is the world's first totally integrated portable take-  
off unit. It features programmable milking functions, yield  
indication, patented automatic cluster removal (ACR) and  
exclusive Soft Stimulation™ milking. The result is greater

control, less labor and higher productivity, all at a lower cost  
than competitive alternatives.

It's one small step for you. One giant leap for your profits.

You owe it to yourself, and the future of your operation, to  
explore the many benefits of MilkMaster. It's the new frontier  
in stanchion dairying. Call 1-800-507-5400 or your independent  
Alfa Laval Agri™ dealer today to learn more.

**Alfa Laval Agri™**  
A WORLD AHEAD. Alfa Laval Agri Inc. • KCMO

