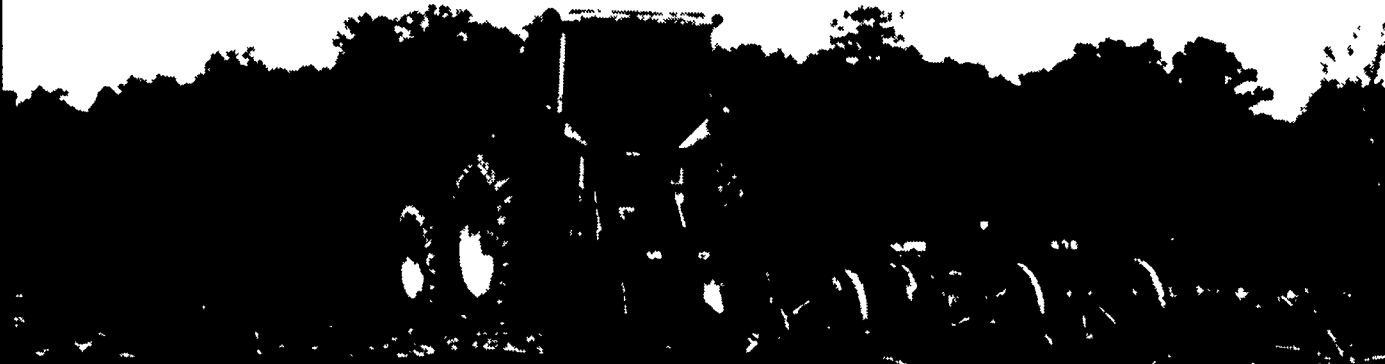


# You Can't Field Better Value



## AGRI TRAC LL

Radial performace at a significantly lower price

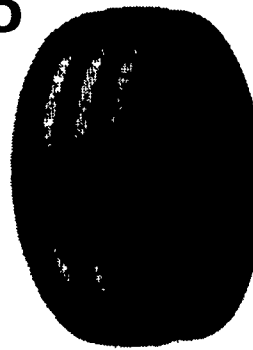
# \$359

15.5R-38 ★

- New cavity shape for low carcass stress and long, narrow footprint.
- Belt package gives excellent bruise and puncture resistance.

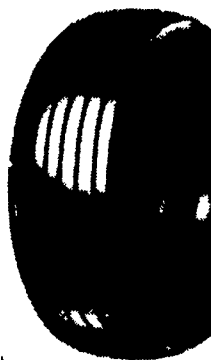


## AGRI-QUAD RIB FRONT TRACTOR TIRES



Size	Ply	Price
9.5L-15	8 Ply/TT	\$78.00
11L-15	8 Ply/TT	\$95.00
10.00x16	8 Ply/TT	\$91.00
11.00x16	8 Ply/TT	\$110.00

## FARM UTILITY WAGON TIRES



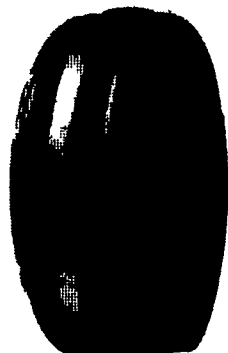
SIZE	PLY	PRICE
9.5L14	8 Ply TT	\$47.00
7.60x15	6 Ply TT	\$44.00
9.5L15	8 Ply TT	\$49.00
11L15	8 Ply TT	\$52.00
12.5L15	8 Ply TT	\$65.00

## AGRI POWER LB/SB

SIZE	PLY	PRICE
11.2-24	4 Ply	\$155.00
11.2-28	4 Ply	\$169.00
12.4-28	4 Ply	\$169.00
14.9-28	6 Ply	\$265.00
15.5-38	6 Ply	\$279.00
16.9-34	6 Ply	\$365.00
18.4-34	6 Ply	\$339.00
18.4-38	6 Ply	\$399.00
18.4-38	8 Ply	\$469.00
20.8-38	8 Ply	\$609.00

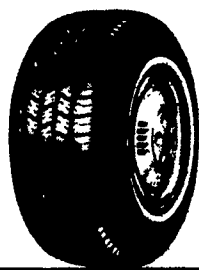
## CO-OP TRI- RIB

SIZE	PLY	PRICE
5.00-15	4 Ply	\$35.00
6.00-16	4 Ply	\$37.00
6.00-16	6 Ply	\$40.00
7.50-16	6 Ply	\$59.00
10.00-16	8 Ply	\$88.00
11.00-16	8 Ply	\$109.00



## PARKWAY 880 PLUS

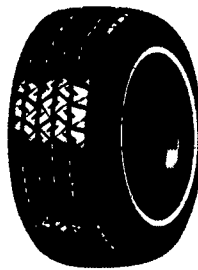
WHITEWALLS



SIZE	PRICE
P155/80R13	\$30.50
P165/80R13	\$31.50
P175/80R13	\$32.50
P185/80R13	\$34.00
P185/75R14	\$34.50
P185/75R14	\$36.00
P205/75R14	\$37.00
P205/75R15	\$39.00
P215/75R15	\$40.50
P225/75R15	\$43.50
P235/75R15	\$44.50

## TOURING SUPREME SE

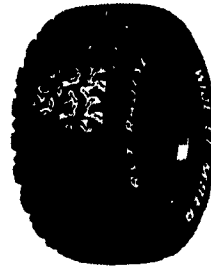
60,000 Miles/ 60 Months Limited Tread Wear Warranty



SIZE	PRICE	SIZE	PRICE
P185/75R14	\$48.00	P185/70R14	\$49.00
P185/75R14	\$51.00	P185/70R14	\$52.00
P205/75R14	\$52.00	P205/70R14	\$54.00
P205/75R15	\$55.00	P215/70R14	\$56.00
P215/75R15	\$58.00	P205/70R15	\$57.00
P225/75R15	\$60.00	P215/70R15	\$59.00
P235/75R15	\$63.00	P225/70R15	\$62.00
P205/65R15	\$57.00		

## RVT RADIAL ALL TERRAIN

OUTLINE WHITE LETTERS



SIZE	LD. RNG.	PRICE
30x9.50R15LT	C	\$85.00
31x10.50R15LT	C	\$90.00
32x11.50R15LT	C	\$95.00
33x12.50R15LT	C	\$105.00
L235/75R15	D	\$77.00
L265/75R15	D	\$85.00
P205/75R14	SL	\$53.00
P205/75R15	SL	\$56.00
P215/75R15	SL	\$58.00
P235/75R15	SL	\$62.00

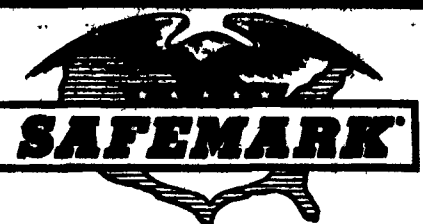
# SAFEMARK

- QUALITY
- SERVICE

Division of Pennsylvania Farm Bureau  
Camp Hill, PA 17011

- DEPENDABILITY
- ECONOMY

CALL 1-800-PFB-TIRE For Dealer Nearest You



## Participating SAFEMARK Dealers

- |   |  |
|---|--|
| <p><b>Adams</b><br/>Mar-Bar Tire Service<br/>Hanover, PA 17331<br/>(717) 633-6412</p> <p><b>Blair</b><br/>Rhodes Farm Supply<br/>Williamsburg, PA 16683<br/>(814) 832-2491</p> <p><b>Bradford/Sullivan</b><br/>Hietand's Farm &amp; Home Service<br/>Rome PA 18837<br/>(717) 744-2371</p> <p><b>Bradford</b><br/>Isaac's Tire Sales<br/>Canton, PA 17724<br/>(717) 673-8121<br/>Dacheux Service Center<br/>Dushore, PA 18614<br/>717-928-8400</p> <p><b>Centre</b><br/>Dunkle &amp; Grieb<br/>Centre Hall, PA 16828<br/>(814) 364-1421</p> <p><b>Chester/Deleware</b><br/>Enfield Equipment Inc<br/>Oxford, PA 19350<br/>(610) 932-8858<br/>J&amp;L Tire Service<br/>Chatham, PA 19318<br/>(610) 869-0450<br/>S.G. Lewis &amp; Sons<br/>West Grove, PA 19390<br/>(610) 869-2214<br/>Stoitzfus Farm Service<br/>Cochranville, PA 19330<br/>(610) 593-2407/2408</p> <p><b>Clinton</b><br/>Dotterer Equipment, Inc.<br/>Mill Hall, PA 17751<br/>(717) 726-3471</p> <p><b>Columbia</b><br/>Steve Shannon Tire Co., Inc.<br/>Bloomsburg, PA 17815<br/>(800) 343-TIRE<br/>Rte. 487, Benton, PA 17814<br/>(717) 925-2821</p> <p><b>Cumberland</b><br/>Barrick Tire Sales<br/>Newville, PA 17241<br/>(717) 776-5782</p> <p><b>Dauphin</b><br/>Farr Family Tire<br/>Middletown, PA 17057<br/>(717) 944-4001</p> <p><b>Franklin</b><br/>Forrester Farm Equip., LTD<br/>Chambersburg, PA 17201<br/>(717) 263-0705<br/>Stoneham's<br/>Waynesboro, PA 17268<br/>(717) 782-3614<br/>Bruce B. Gamble &amp; Sons<br/>Concord, PA 17217<br/>(717) 348-2678</p> <p><b>Greene</b><br/>Burns Tire Service<br/>Waynesburg, PA 18370<br/>(412) 627-8283</p> | <p><b>Fulton</b><br/>Clugston Farm Equipment<br/>Needmore, PA 17238<br/>(717) 573-2215<br/>Harryman Brothers Inc.<br/>Hustontown, PA 17229<br/>(717) 987-3431</p> <p><b>Lancaster</b><br/>Leola Tire Service<br/>Leola, PA 17540<br/>(717) 656-2574<br/>Mesaick Farm Equip., Inc.<br/>Elizabethtown, PA 17022<br/>(717) 387-1319<br/>Rhoadstar - Retreading<br/>Quarryville, PA<br/>(717) 786-2178</p> <p><b>Lebanon</b><br/>Farr Family Tire<br/>Palmyra, PA 17078<br/>(717) 838-0151<br/>Lebanon Valley Implement Co., Inc.<br/>Richland, PA 17087<br/>(717) 866-7518</p> <p><b>Lehigh</b><br/>Kermit K. Kistler<br/>Lynnport, PA 18066<br/>(610) 298-2011<br/>Joe's Battery &amp; Tire<br/>Allentown, PA 18103<br/>(610) 437-4861</p> <p><b>Mifflin</b><br/>Miller-Lake, Inc.<br/>Belleville, PA 17004<br/>(717) 935-2335</p> <p><b>Montour</b><br/>Steve Shannon Tire<br/>Danville, PA 17821<br/>(717) 275-5506</p> <p><b>Northampton/Monroe</b><br/>Northampton Farm Bureau<br/>Tatamy, PA 18085<br/>(610) 758-3254</p> <p><b>Northumberland</b><br/>Rovendale Supply<br/>Watsonstown, PA 17777<br/>(717) 538-5821<br/>(717) 742-7521</p> <p><b>Schuylkill</b><br/>Charles Snyder, Inc.<br/>Tamaqua, PA 18252<br/>(717) 388-5845</p> <p><b>Union</b><br/>Mifflinburg Farm Supply, Inc.<br/>Mifflinburg, PA 17844<br/>(717) 966-3114/3115<br/>Allen Hoover Repair<br/>Mifflinburg, PA 17844<br/>(717) 966-3821</p> <p><b>Washington</b><br/>Canonsburg Supply Equipment Co., Inc.<br/>Canonsburg, PA 15317<br/>(412) 748-2500</p> <p><b>York</b><br/>Corn Hill Farm, Inc.<br/>Ebers, PA 17319<br/>(717) 938-2012</p> |
|---|--|

Meet Our Suppliers at  
Ag Progress Days, Aug. 15-17  
Main & E. 5th Streets