

# PRODUCE MARKETS

## Philadelphia Vegetable

PHILADELPHIA  
JULY 12, 1995

### VEGETABLES

---ARTICHOKES: ctns CA 24s 18.00 36s 18.00  
 ---ASPARAGUS: MARKET SLIGHTLY LOWER 11 lb ctns/crts bchd CB Green 12s jbo 18.00 12s exlge 18.00 fair cond 8.00-10.00 12s lge 18.00 12s std 18.00 12 lb ctns/crts bchd MX Green 12s exlge 16.00-18.00 12s lge 16.00-18.00 mostly 16.00 12s std 16.00-18.00 mostly 16.00 15 lb ctns bchd MX Green tips 16.00  
 ---BEANS: MARKET SLIGHTLY HIGHER buctns/crts NC Round Green Type 12.00-14.00 NJ Round Green Type 13.00-15.00 Kentucky Wonder Type 10.00 PA Round Green Type few 15.00 fair qual 10.00-12.00  
 ---BEETS: MARKET SLIGHTLY LOWER crts bchd NJ 12s 5.00-6.00 few 8.00 OH 12s 6.00-7.00 few 5.00 25 lb flmbgs lse OH 8.00 1 1/9 bu crts lse NJ 9.00-12.00 40 lb ctns lse pa fair appear 6.00-8.00  
 ---BROCCOLI: MARKET LOWER ctns CA bchd 14s 7.00-8.50 few 9.00-10.00 bchd 18s 9.00-10.00 Crown Cut 8.50-10.50  
 ---BRUSSELS SPROUTS: OFFERINGS NONE  
 ---CABBAGE: MARKET SLIGHTLY HIGHER 1 3/4 bucrts & 50 lb ctns NJ Round Green Type med-lge 5.00-6.00 occ 6.50 lge 4.00-5.00 Red Type med 6.50-7.00 mostly 7.00 NY Round Green Type med-lge 6.00-6.50 PA Round Green Type med 4.00-5.00 50 lb sks NY Round Green Type lge fair cond 6.00 1 3/4 bucrts & 40 lb ctns NJ Savoy Type med 7.00-8.00  
 ---CARROTS: MARKET FILM BAGS HIGHER, OTHERS ABOUT STEADY sks 48 1-lb flmbgs CA Topped med-lge 12.00-14.00 mostly 13.00 50 lb sks lse AZ Topped lge 14.00-15.00 CA Topped jbo 16.00-19.00 mostly 16.00-17.00 occ 15.00 CD Topped lge 13.00 MX Topped jbo 16.00 ctns bchd CA Bunched 24s 11.00-11.50  
 ---CAULIFLOWER: MARKET

SLIGHTLY LOWER ctns flmwrpd CA 12s 8.00-9.00 occ 10.00 9s 7.00-8.00  
 ---CELERY: OFFERINGS LIGHT ctns CA 1 1/2 dz fair cond 10.00 2 dz fair cond 11.00-12.00 2 1/2 dz fair cond 11.00-12.00 ctns flmbgs SAD!Its 18s 14.00  
 ---CHINESE CABBAGE: MARKET STEADY celcrts OH few 10.00 30 lb ctns CA Nappa 10.00 celcrts OH Nappa feg fa & c  
 ---CORN-SWEET: MARKET SLIGHTLY LOWER wbcrtcs DE White 4-4 1/2 dz fair qual 6.00-7.00 GA Yellow 4-4 1/2 dz 6.00-8.00 mostly 6.00-7.00 few 5.00 White 4-4 1/2 dz 8.00-9.00 few 10.00 few 7.00 NC White 4-4 1/2 dz 7.00-8.00 few 6.00 NJ White 4-4 1/2 dz fair cond 5.00  
 ---CUCUMBERS: MARKET SLIGHTLY LOWER 1 1/9 buctns/crts NJ Pickles med 14.00-15.00  
 00 fair qua 1 8.00-9.00 fair cond 7.00 lge 6.00-7.00 WAXED 1 1/9 buctns/crts MD med fr qual 5.00-7.00 NJ med 9.00-11.00 mostly 10.00 fair appear 6.00-8.00 fr qual 5.00-7.00 few 4.00 sml fair appear 6.00 lge 5.00 VA med 10.00 fair appear 6.00-8.00 fr qual 5.00-7.00 mostly 5.00-6.00 fair appear 6.00-8.00  
 ---EGGPLANT: MARKET ABOUT STEADY 1 1/9 buctns/crts GA med 7.00-8.00 few 6.00 VA med 7.00-9.00 few 6.00  
 ---ENDIVE: MARKET ABOUT STEADY 1 1/9 buctns/crts NY 5.00-6.00 OH 6.00-6.50 1.3 bucrts NJ 24s few 10.00  
 ---ESCAROLE: MARKET ABOUT STEADY 1 1/9 buctns/crts NY 5.00-6.00 2 OH 6.00-6.50 1.3 bucrts NJ 24s few 10.00  
 ---GARLIC: MARKET LOWER 30 lb ctns CA White super jbo 31.50 exjbo 30.00 jbo 27.00 MX White col 36.00 #8 few 28.00-29.00 #9 few 37.00-36.518.00 #10 few 39.00-40.00  
 ---GREENS: MARKET ABOUT STEADY ctns bchd CA Swiss Chard 12s 8.00 Red 12s 8.00 ctns/crts bchd NC Collard 5.50-6.00 NJ Collard 6.00 Kale 6.00-6.50 mostly 6.00 Mustard 6.50-7.00 Turnip Tops 6.50-7.00 Swiss Chard 8.00 Rape 6.50-7.00 PA Kale 5.50-6.00 ctns lse CA Kale Flowering 24s 12.00 20 lb ctns CA Broccoli Rabe 24s 16.00-18.00 previous commitments 14.00

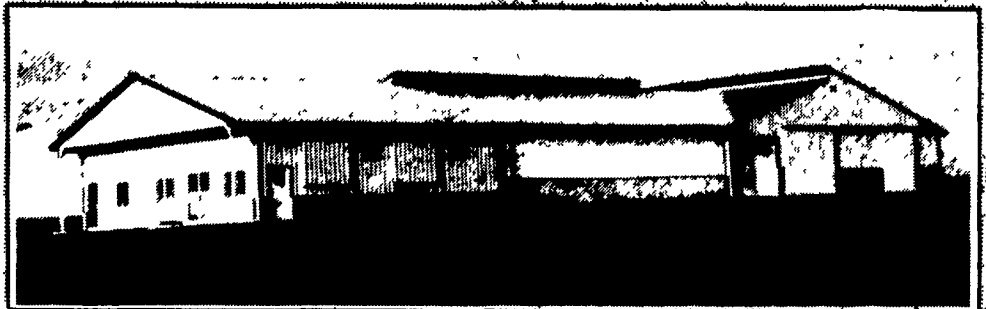
---LETTUCE-ICEBERG: MARKET ABOUT STEADY ctns CA 24s 8.00-10.00 fair cond low as 5.00 Wrapped 24s 9.00-10.00 one label 12.00 poor-ord cond 1.00-3.00 30s fair cond 6.00-7.00 CD 24s 5.50 Wrapped 24s 7.00 NY 24s 5.00-6.00  
 ---LETTUCE-OTHER: MARKET ABOUT STEADY ctns CA Boston 24s 7.00-8.50 Green Leaf 24s 7.00-9.00 mostly 8.00-9.00 few 9.50-10.00 fair cond low as 4.00 Red Leaf 24s 8.00-9.00 few 9.50-10.00 few 7.00 NY Boston 24s 5.00-6.00 Green Leaf 24s 5.00-6.00 Red Leaf 24s 5.00-6.00 crts OH Boston 24s 5.00-6.00 ctns/crts OH Green Leaf 24s 5.00-6.00 Red Leaf 24s 5.00-6.00 12-qt bkts OH Bibb 24s 6.00  
 ---LETTUCE-ROMAINE: MARKET ABOUT STEADY ctns CA 24s 8.00-10.00 mostly 9.00 few 6.00-7.00 CD 24s 5.00-7.00 NY 24s 5.00-6.00 OH 24s 6.00 1.3 bucrts CA 24s 10.00-12.00 few 13.50-14.00 one lot 8.00-9.00  
 ---MUSHROOMS: MARKET STEADY 10 lb ctns PA lge 12.25-12.50 mostly 12.50 med 9.75-10.00 mostly 10.00 4 qt bkts PA med-lge 5.00-5.50 few 4.75 sml-med 4.00-4.50 5 lb ctns PA Portobellas 10.00-12.00 3 lb ctns PA Shiitake 18.00 fr qual 15.50-16.00 ctns 12 8-oz trays flmwrpd PA 8.00-9.00 ctns 10 12-oz trays flmwrpd PA 9.50-10.50 mostly 10.00 ctns 10 10-oz trays/femwRp0 PA 8.50-9.50 mostly 9.50  
 ---OKRA: NO SALES REPORTED  
 ---ONIONS GREEN: MARKET LEEKS HIGHER, OTHERS SLIGHTLY

LOWER ctns bchd CA 48s 9.00 CD 48s 9.00 MX 48s 8.50 NJ 48s 9.00 OH 48s 9.00-10.00 ctns/crts bchd CA Leeks 12s 15.00 NJ Leeks 12s 18.00-20.00 occ high as 23.00  
 ---PARSLBY: MARKET ABOUT STEADY crts bchd OH Curly 60s 10.00 Plain 60s 10.00  
 ---PARSNIPS: OFFERINGS INSUFFICIENT TO QUOTE  
 ---PEAS GREEN: MARKET ABOUT STEADY 10 lb ctns GU Sugar Peas Decalxzed 11.00-12.00 mostly 12.00 few 13.00  
 ---PEAS OTHER: OFFERINGS INSUFFICIENT TO QUOTE  
 ---PEPPERS: MARKET LOWER 1 1/9 buctns/crts GA Bell Type Green lge 12.00-13.00 med 10.00-12.00 mostly 10.00 NC Bell Type Green exlge 14.00-15.00 lge 10.00-12.00 med 9.00 Mxd Red And Green lge 10.00 med-lge 8.00 NJ Cull Type Green exlge 16.00 fair appear 12.00-13.00 lge 12.00-13.00 mostly 13.00 med 9.00-12.00 mostly 10.00-11.00 SC Bell Type Orange lge 28.00 Red lge 25.00 Yellow lge 25.00 VA Bell Type Green exlge 14.00-16.00 5 kg ctns NL Bell Type Red lge 24.00-25.00 Yellow lge 22.00  
 ---PEPPERS OTHER: OFFERINGS LIGHT 1 1/9 buctns/crts NC Cubanelles med-lge 7.00  
 ---RADISHES: MARKET ABOUT STEADY ctns tpd 30 6-oz flmbgs MN Red 4.00-5.00 OH Red 4.50-6.00 mostly 5.00-5.50 ctns tpd 14 1-lb flmbgs MN Red 5.00-5.25 OH Red 5.00-5.50 crts bchd NJ

Red 24s 10.00  
 ---RHUBARB: OFFERINGS INSUFFICIENT TO QUOTE  
 ---RUTABAGAS: OFFERINGS NONE  
 ---SPINACH: MARKET ABOUT STEADY ctns bchd CA Flat 24s 10.50 1 2/5 bucrts bchd CA Flat 24s 11.00 1 2/5 bu crts NJ Savoy 9.00-10.00  
 ---SQUASH: MARKET YELLOW STRAIGHTNECK HIGHER, ZUCCHINI ABOUT STEADY 1/2 & 5/9 buctns/crts NJ Zucchini sml-med 3.00-5.00 med-lge 3.00 Yellow Straightneck sml-med 5.00 golden zucchini sml-med 5.00-6.00 NY Zucchini sml-med 4.00 med 3.00 Yellow Straightneck sml-med 6.00-7.00 med 5.00 PA Zucchini med 3.00 1 1/9 buctns/crts PA Zucchini lge few 2.00  
 ---SWEET POTATOES: MARKET ABOUT STEADY CURED 40 lb ctns NC U.S. One Jewels med 12.00-13.00 fair qual & appear 5.00-5.50  
 ---TOMATOES: MARKET NJ LOWER, OTHERS ABOUT STEADY 25 lb ctns FL 85% U.S. One or Better Mature Greens light red to red lge few 13.00 NJ Vine Ripes pink to light red lge 14.00-18.00 mostly 15.00-17.00 ord qual 7.00 med 8.00-12.00 mostly 10.00-12.00 occ 13.00 fair qual 5.00-6.00 sml 5.00-8.00 SC Vine Ripes red exlge 8.00-12.00 85% U.S. One or Better Mature Greens light red to red lge few 15.00-16.00 fair qual 10.00-14.00 mostly 10.00 fair qual & cond low as 6.00 lge few 13.00-14.00 fair qual 10.00-12.00 mostly 10.00 fair qual & cond low as 6.00 Local Repack 85% U.S. One or Better Mature Greens

## KEYSTONE CONCRETE PRODUCTS INC.

477 East Farmersville Rd.  
 New Holland, PA 17557  
 (717) 855-2361



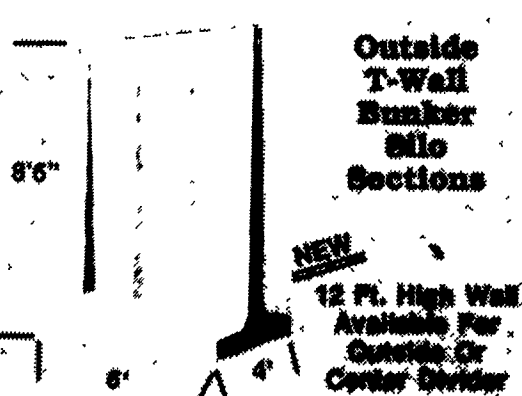
Concrete Slatted Free Stall Barn



Long Core Cattle Waffle Slats

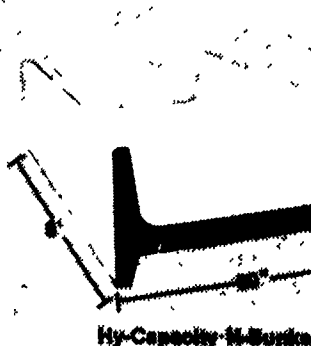


Waffle Slat Section

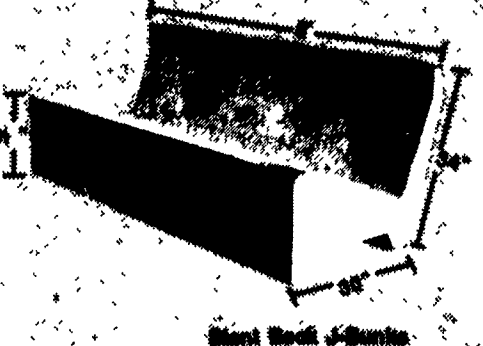


Outside T-Wall Bunker Silo Sections

NEW  
 12 Ft. High Wall Available For Cattle Or Cattle Divider



High-Capacity 14-Bunkle



10-Bunkle

End Sections Available For Feed Bunks

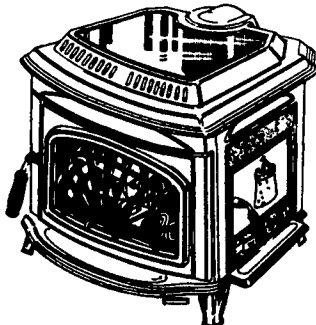
Give us a call for more information on hog, beef, dairy and hatter barns.

See our beautiful new Wood & Gas Stoves.

at

### DUSSINGER'S QUALITY STOVES

2533 Old Phila. Pike, Rt 340, Smoketown, PA  
 3 miles east of Lancaster  
 Tue., Thurs., & Fri. 10-8;  
 Wed. & Sat. 10-5



\* See the New "STRATFORD CLASSIC" Coal Stoves

(717)397-7539

## CASH & GARRY ELECTRICAL SUPPLY



WALL EXHAUSTERS  
 8" thru 18"  
 In Stock

### PLEASANTAIRE CANARM

56" PADDLE FANS  
 1-9 \$45.58 ea.  
 10 or More \$43.25 ea.



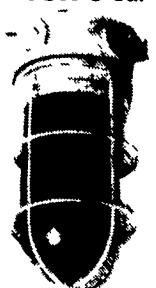
BARN CIRCULATORS  
 20" - \$128.00  
 24" - \$136.50  
 30" - \$199.00

### Rindale SILO PLUGS AND CONNECTORS



\$47.26 set

VAPOR PROOF 100 WATT LIGHT  
 w/Guard Case Lot  
 \$16.79 ea.



RONK - Transfer Switches for On-Farm Use with contacts for stand-by generators.