

The following obsolete equipment is offered for sale by sealed bids at West Side Area Vocational Technical School, 75 Evans St., Kingston, PA

Deadline for bids is 1 pm, 7/24/95 when bids will be open and awarded.

(1) Bridgeport vertical milling machine 10"x36", (2) 13" LeBlond engine lathes, (1) Russelle 25-ton #3 punch press, (1) 13" Clausing Colchester geared head engine lathe. All equipment is in place and operable. Anyone wishing to inspect the equipment is asked to call Mr. Peter Halesy, West Side AVTS; 717-288-8493 between the hours of 9am and 2pm to arrange for an appointment. This property is sold as is, where is, and must be removed within 30 days after awarding. West Side AVTS reserves the right to reject any and all bids.

1978 IH grain truck, DT, 466 diesel engine, air brakes, 5 speed trans, 2 speed rear, PS, 30,000 GVW, like new, 16' grain body, 15 ton scissor hoist. All excellent condition. 717-786-1119 evenings.

1978 Walton 38' drop deck trailer w/all new air brakes, 38,500 GVW, real good condition. (717)445-4410.

1981 GMC C-7000 cab, chassis, 366 engine, 5+2, P/S, air brakes, DBL frame, 151" CA, 12,000FA, 22,000RA, \$4,950. (410)838-5639.

1982 Suburban 6.2 diesel, 4x4, automatic, A/C, P/W, class III hitch, new tires, running boards, 119,000 miles, \$4,500 OBO. (610)593-2876.

1983 Ford F250 XL 4X4 6.9 Diesel Pick-Up, 4Spd., AM/FM Radio, Tires Like New, High Miles, Excellent Running Condition. \$4995 OBO. (717)445-4309.

1984 6.2 Chevy 1 ton, good truck, bad motor, \$1500 OBO. 717-687-6814.

1985 LN9000 Ford, 350 Cat, 15 speed transmission, wet line, VG condition. (717)788-1486.

1986 Ford wrecker, 1 ton; 1974 DM Mack, 15' dump, 237, 6-speed, 44 rears, 2-axes; 1972 Ford roll-back, 3208 cap, 5 speed trans., 2-speed rear; 1975 IH rollback; 3208 cab, 5 speed trans, 2 speed rears; 16,000 lbs. CAT heavy tow motor, side shift, 6 1 0 - 2 8 6 - 5 1 7 2 717-354-8946 E.B. AUTO SALES.

1969 Int. Loadstar grain truck, 14' bed, very good condition, 70,000 miles on truck, hauls 300 BL no lift, \$1200. 717/243-4796.

1972 Wilson 40' Double Deck Aluminum Livestock Trailer, \$2000. (717)872-8508.

1986 Mack R Model tandem tractor, nice truck, \$12,500; 1985 MH Mack cabover tandem tractor, \$7500; 1980 V Model Mack single axle, air ride, \$5500. 6 1 0 / 9 4 4 - 9 8 7 1 , 610/944-7005.

1987 Ford lime spreader, 10 wheeler, 350 Cummins, good condition. 717-428-1219.

1988 Chevy 1500, 4WD, V6, 5 speed, 90,000 original miles, new engine. 717-463-2328.

1988 Chevy 4X4 Silverado, Step Side, Power Brakes, Steering, Windows, Locks, Air, Cruise, AM/FM Cassette, Black. (607)756-6282 Leave Message. Cortland Co.

1988 Suburban, 78,000 original miles. 717-463-2328.

1989 Camaro T-roof, 305 engine, 45,000 original miles, 1 owner. 717-463-2328.

1989 Ford F-150, 5 speed, V8 engine, stick engine, 92,000 miles. 717-463-2328.

1990 Dodge Dakota, 96,000 Mi., V6, 5 Spd, Very Good Condition, New Inspection, \$4800 OBO. (610)285-4139.

1990 Ford F-150 XLT Lariat, 5 speed, 4x4, 77K, \$9200. 610-286-0541

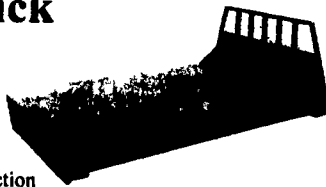
1990 Ford F-250 XLT Lariat, 7.3 diesel, 70K, AT, PS, PB, PW, PDL, AC, cruise, bedliner, running boards, bug shield, 2-tone brown, extra clean, must see, \$11,900. Evenings 717-336-0860.

1990 International 4700 w/16' EBY Livestock Body, DTA 360, 6Spd., Air Brakes, Custom Cab, AC, 28,000Lb. GVW, Truck and Body in Like New Condition. (914)482-4380 or (914)482-4166.

1990 single axle mach. new style, 4 valve engine 194,000 original miles. 717-463-2328.

Replacement Truck Bodies

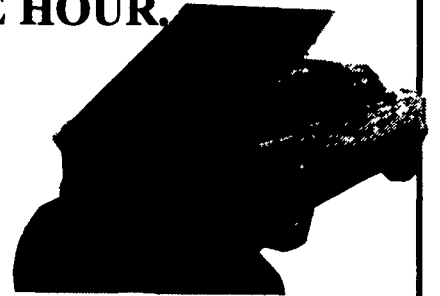
Standard Features Include Headboard (Square or Tapered), Stake Pockets, Rubrail, Diamond Plating or 2" Wood Floor, Heavy Duty Construction



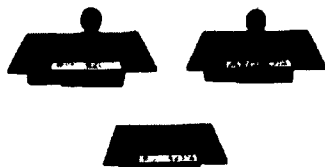
| Length | Width | Frame Width | Price |
|-----------|-----------|---------------|--------|
| 7 FT. | 66" | 38 or 40" | \$ 595 |
| 7 FT. | 80" | 34, 38 or 40" | \$ 690 |
| 8 1/2 FT. | 80 or 90" | 34 or 38" | \$ 600 |
| 8 1/2 FT. | 94 or 96" | 34 or 38" | \$ 700 |
| 10 FT. | 90" | 34 or 38" | \$ 750 |
| 10 FT. | 94 or 96" | 34 or 38" | \$ 825 |
| 12 FT. | 90" | 34 or 38" | \$1100 |
| 12 FT. | 94 or 96" | 34 or 38" | \$1150 |
| 14 FT. | 90 or 96" | 34 or 38" | \$1350 |

EZ Dumper
TURN YOUR PICK UP INTO A DUMP TRUCK IN LESS THAN ONE HOUR.

SALE \$1995



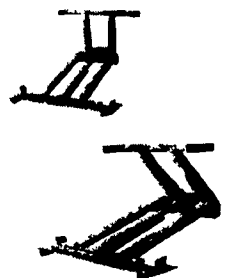
Plastic wood slats for body racks



Gooseneck ball hitches & subframes



Trailer hitches & accessories



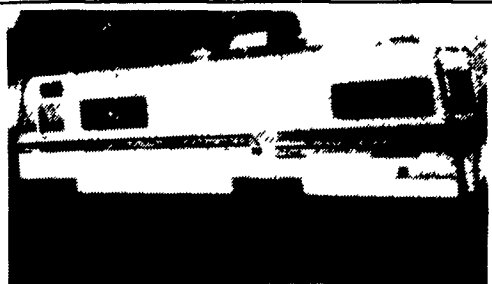
Drop hinge scissor hoists

Ringo Hill Farms Equipment Co., Inc.

1624 Rt 212 Quakertown, PA 18951

(610) 346-7340 Call for a FREE Catalog

33 RECREATIONAL VEHICLES



1973 Concord

28', Air, Generator, Sleeps 9, New Tires, New Radiator, Rebuilt Trans. \$3,500

717-529-2512 No Sunday Calls

34 AUTOS

'85 Sunline travel trailer, 21', sleeps 4-6, A/C, heater, oven, \$3,500 OBO. Must sell. (717)567-6945.

1987 GMC S-15 4x4 Sierra Classic, V-6, auto, air, loaded, 69,000 miles, southern car, black, \$7000. 717/442-9370 evenings.

1987 GMC S-15 4x4 Sierra Classic, V-6, auto, air, loaded, 69,000 miles, southern car, black, \$7000. 717/442-9370 evenings.

1990 Dodge Caravan SE, V-6, auto., air, loaded, 50,000 miles, southern car, black, \$8500. 717/442-9370 evenings.

77 MERCEDES 450-SL Convertible Both Tops 61K miles Excellent \$19,900. (609)466-2953.

'78 Dodge van, 4 captain chairs, sunroof, icebox, couch/bed, 86,000 miles. (717)399-9861.

'85 Mazda RX7 GSL-SE, low mileage, 13B engine, 5-speed, new black paint, excellent condition, \$4150. 410-836-1446.

'90 Buick Century, 49,000 miles, Am/Fm cassette, air, \$6,800. (717)399-9861.

CHEVY'S, FORD'S, etc. Cars and trucks. Over 300 vehicles. Every Monday 6:30PM. PUBLIC AND DEALERS. YORK SPRINGS PUBLIC AUTO AUCTION, RT 15, York Springs, PA 1-800-222-2038.

Dodge 1927 2 Door Coupe, Excellent Condition, Good Running Order. (410)820-2078 Cordova, MD.

Fords, Chevys, Etc. Over 100 available every Wednesday 6:30 PM. YORK PUBLIC AUTO AUCTION. Exit 12 Interstate 83, tags and transfers available w/ proof of insurance. 717-266-5634.

35 TRUCKS & TRAILERS

12' Huey aluminum cattle body, very good shape, \$2,250 OBO. (410)526-6892.

16' aluminum flatbed gooseneck trailer w/2 new 6,000# axles and tires. Inspected and ready to go. \$2,800 OBO. (717)369-5702.

1967 Mack R model, 33,000 GVW, w/1982 9 ton Eager-Beaver trailer, both excellent shape, \$12,500. (610)584-5303.

1974 Chev w/15' Eby livestock body, good condition, rear ramp has safety door, cab chassis fair condition, will split. 717/539-8223.

1974 International Fleetstar 2050 Tandem Cab and Chassis 120 CA 225 CAT 13 Spd. \$6250. (717)334-2907.

1977 Kenworth 475 DET, 13 speed, good rubber, 1974 Schnure flatbed trailer w/sides, (2) aluminum boxes, \$5000. 717-397-3869 after 6PM.

1978 GMC pickup 3/4T, 8,600 GVW, 4spd, 4x4, lockout hubs, new clutch, brakes, exhaust, ball-joints, tie rods. Make offer. (610)583-7993.

OVER 90 TRUCKS

Bobby Gerhart's Truck World

Mon. - Fri. 9-5, Sat. 9-3

2400 E. Cumberland St. Rt. 422 Lebanon, PA 17042 717-273-7995



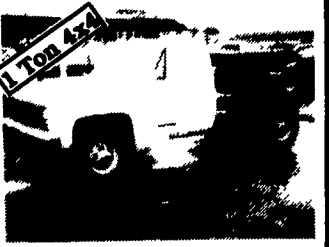
83 CHEV. C10 6.2 Diesel, AT, AC, Blue 2 to Choose From, #C262 *2,495



88 FORD F150 SUPER CAB 4x4, AT, AC, XLT Lariat, 2-Tone Blue, Just Arrived. #F368 *11,995



90 DODGE D350 4x4 w/Phoenix Walk-In Utility 10,000 GVW, Dual Rear Wheels, 360, AT, PS, PB, 73,000 Mi., Ex. Cond. #D138



89 GMC K3500 4x4 Cab & Chassis, AT, AC 8800 GVW Only 55,000 Miles



88 CHEV. C3500 EXTEND CAB DUALY 454, AT, AC, Southern Coach Conversion, 52,000 Mi. #C272



94 FORD F350 CREW CAB DUALY XLT, 7.3L Turbo, Diesel, AT, AC, Loaded, Only 6,000 Mi. #F355



89 UD 2000 16' FLATBED Diesel, 6-Spd., AM/FM, 42,000 Miles, White, Excellent Shape. #N108



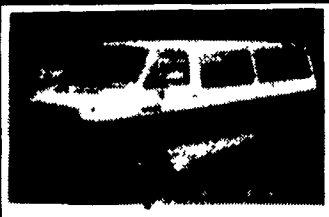
91 FORD EXPLORER XLT 4x4, AT, AC, 6 Cyl., Charcoal #F361 *13,995



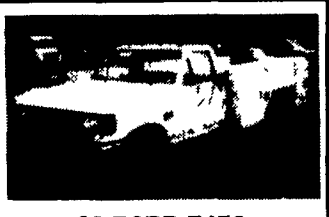
92 GMC C2500 6.2 Diesel, AT, AC, 43,000 Miles #G127



87 FORD F350 STAKE BODY DUMP 6.9L Diesel, AT, PS, PB, 12 Ft. Elect. Dump Body, Only 35,000 Orig. Miles #F339



86 DODGE D250 RAM VAN ROYAL SE 318 V8, AT, AC, 8 Passenger, 1-Owner, Extra Clean #D139



89 FORD F450 SUPER DUTY 10 Ft. Utility Body, 7.3 Diesel, 14,500 GVW, 5-Speed Overdrive, #F359