

Public Auction Register

Closing Date Monday 5:00 P.M.
of each week's publication

MON. SEPT. 18 - Lebanon Valley Auction Co. Consignment Auction, planning a 20th Anniversary Auction at the Lebanon Area Fairgrounds, Leb., Pa.

TUES. SEPT. 19 - 9AM Quilt, craft & buggies. A&C Diffenbach Auction, Inc. 100 W. Jackson St., New Holland, Pa.

TUES. SEPT. 19 - 8PM Feeder Cattle Sale. Carlisle Livestock Market, Inc., Exit 12 off I-81 turn South - then left onto Alexander Spring Rd. 249-4511.

WED. SEPT. 20 - 9AM Quilt & Craft. A&C Diffenbach Auction, Inc. 100 W. Jackson St., New Holland, Pa.

WED. SEPT. 20 & THURS. SEPT. 21 - Large Two Day Sale of Farm Equipment, Etc. Located 6 Miles South Of Chambersburg, Pa. One Mile East of Marion along Rt. 914, 1/4 East Off Rte. 81, Exit 4. Owners, Jerrold & Gloria Oaks. Marion Auction Service.

THURS. SEPT. 21 - 7PM

Heifer Sale. Rt. 522 3 Mi. East of Middleburg, PA., 5 Mi. West of Selinsgrove, PA. Middleburg Livestock Auction Sales, Inc.

FRI. SEPT. 22 - 9AM The Vintage Sales-Willier, Inc. Fall Dairy Heifer Sale. Call Willier Inc. at (717) 626-6845 to consign cattle and be part of the action.

FRI. SEPT. 22 - 1:30PM State Graded Feeder Pig Sales. Carlisle Livestock Market, Inc., Exit 12 off I-81 turn South then left onto Alexander Spring Rd., 249-4511.

FRI. SEPT. 22 - Brethren Disaster Relief Auct. Heifer

Sale, Lebanon Area Fair-ground, Lebanon, PA. Harry H. Bachman Auct.

SAT. SEPT. 23 - 2 JD Tractors, Farm Equipment. Robert & Louise Risser. Rear 361 North Broad St., Lititz, PA. John D. Stauffer Auctioneers.

SAT. SEPT. 23 - Feeder Cattle. McKeys, 4 Mi. South of Port Trevorton, Snyder Co., PA. Alvin Wenger. Nevin Martin & Sons

Auct. SAT. SEPT. 23 - Mel's Stables. at 834 Wallace Rd., New Holland, Pa. From Rt. 23 in New Holland, go S. on Brimmer Ave., go 2 miles S. on New Holland Rd. to Hill Rd. Turn left on Hill Rd. Proceed 1.2 miles to sale on left. From Rt. 340 E. of Intercourse take New Holland Rd. 2.5 miles to Hill Rd., right on Hill Rd. at sale on left. Mel Hoover, owner.

SEALED BIDDER'S ABSOLUTE AUCTION

1.14 ACRE SUBDIVIDABLE LOT • COMMERCIAL/INDUSTRIAL ZONE
3200SF & 3300SF BLOCK BLDGS • WATER & SEWER AVAILABLE
Bunker Hill Ave. @ Edgar Alley • Delta, PA 17314
(Located one block north of Main St.)

Saturday, July 22 • 11:00am

Terms Of Sale: Real Estate - The real estate is being sold at ABSOLUTE SEALED BIDDER'S AUCTION over a minimum bid of \$70,000. All bidders must register prior to the auction and submit a sealed bid offer to the auctioneer by no later than 11:00 a.m. on the sale date. A deposit in the amount of \$2,500 cash, certified or cashier's check must accompany the sealed bid. All sealed bids will be opened on the sale day. The highest two sealed bids and those sealed bids equivalent to 80% or more of the amount of the highest sealed bid shall be qualified to participate in the oral bidding for the property. All other sealed bids shall be rejected and their deposits returned. The oral bidding will begin at the highest sealed bid. The highest oral bidder over \$70,000 must settle by no later than August 2, 1995. The unsuccessful oral bidders will receive a full refund on their deposit. The property is being sold in "as is" condition. Call Patrick S. O'Neill to receive the bidder's prospectus.

O'NEILLS AUCTION COMPANY
P.O. Box 394 • Forest Hill, MD 21050
(410) 838-6980 • 879-4530 • FAX 836-0772

PUBLIC AUCTION OF VALUABLE CHESTER COUNTY REAL ESTATE, WELL BUILT BRICK RANCHER, CAR, GUNS, COINS, ANTIQUES, FURNITURE, TOOLS, GLASSWARE & HOUSEHOLD GOODS

SAT., JULY 15, 1995
10:00 AM

LOCATED AT: 2418 Longview Drive, Coatesville, Caln Township, Chester County, Pa. From Route 30 bypass take Brandywine VA Hospital Exit to Reeceville Road, turn left to Route 340, turn left to Barley Sheaf Road (first right), turn right to Longview Drive (first left), turn left to property on right.

★ REAL ESTATE (To Be Offered At Noon) ★

Real estate consists of a well built brick rancher on a landscaped lot with spectacular view. The dwelling contains two large bedrooms, 1.5 baths, huge living room with brick fireplace, formal dining room, eat-in kitchen, entry foyer, full basement with family room, built in two car garage, enclosed porch & covered flagstone patio. The dwelling is heated with an oil hot water heating system with cast iron baseboard. Water service and sewage disposal systems are on site. The site measures 180'x290' more or less and is landscaped with mature trees and shrubbery. There is a superior view of the valley below from this property. This large, well kept home deserves your attention. Quality features abound!

★ OPEN FOR INSPECTION ★
THURSDAY, JUNE 8, 4-6 PM & SATURDAY, JUNE 10, 2-4 PM
CALL AUCTIONEERS FOR COMPLETE BROCHURE OR PRIVATE SHOWING
★ ANTIQUES, FURNITURE & APPLIANCES ★

Fine cherry dining room suite, three marble top stands, marble top coffee table; clawfoot coffee table; piecrust tier table; oak roll-top desk; sofa; chairs, cane seated chair; goose neck rocker; mahogany secretary desk; leather chairs; server; drop leaf library table; oak desk & chair, tea cart; smoking stand; round mahogany table, blanket chest, cedar chest; chest of drawers; mahogany end tables, Victrola; nice mahogany pineapple bedroom suite, 3 piece mahogany bedroom suite, Westinghouse washer, Quasar 25" color TV, 18 cu ft Whirlpool refrigerator/freezer and more

★ ANTIQUES & COLLECTIBLES ★
YoYo quilt, Navy uniform, braided rug; oriental carpet; scrapbook, Victrola records; Christmas items, oval mirrors, large oak frame, pictures, numbers 1 6 Arthur Singer bird prints, iron lady door stop; bank; old tin toys, scales; shoe last, beaded purse, nice amount of costume jewelry and much more.

★ GLASSWARE & HOUSEHOLD GOODS ★
Wedgwood, tea set, pitchers; Wentworth (Green leigh) china service for 12; hen on nest; pressed glass; stemware; Bavaria; Nippon, Shirley Temple, assorted glassware; assorted pots, pans, kitchen utensils, toaster oven, cook-books; White sewing machine; hooks; rug shampoos; stereo; typewriter; card tables; folding chairs; canning jars; humidifier and much more.

★ MOWERS, TOOLS, LAWN & GARDEN ITEMS ★
John Deere S92 11 h.p. riding mower; J.D. dump cart; 18" push mower; spreader; aluminum extension ladder; assorted rakes; shovels; picks; sledges; etc.; car ramps; grinder; mason trowels, router/planes; circular saws; hand saws; levels; etc.; fishing rods & reels; 1958 fishing license; lawn chairs; old Sears grill; wooden barrels and more.

★ GUNS & COINS (To Be Sold At 1 PM) ★
Winchester model 1897 12 ga. full choke pump; Ithica model 37 16 ga. featherlight pump; Elbar 1926 32-20 long CTG revolver; 1818, 1846 lg cents; 17 Indian head pennies, 1921 silver dollar; silver dimes & halves; wheat pennies and more.

★ CAR (To Be Sold at 12:30 PM) ★
1989 Mercury Sable GS, four door, 32,000 miles; automatic; air condition; radio; in excellent condition.

AUCTIONEER'S NOTE: This fine real estate is seriously for sale and deserves your attention. Above average antiques, furniture and collectibles. No Junk! Don't miss this one!
PAYMENT TERMS: Real Estate, 10% down payment day of auction. Balance due by August 30, 1995. Buyer pays all real estate transfer taxes. Personal Property, to be paid in full day of auction with cash, PA or approved check.
BROKER PARTICIPATION: 1% fee available for successful buyer prior to July 14, 1995. Registration letter must include prospective buyer's signature. Brokers call Auctioneers for details.

Auction Conducted For:
Howard Rissel,
POA for Fillmore Rissel
William R. Keen, Jr., Attorney

Auction Conducted By:



Stephen J. Barr - AU-002422-L
James S. Davis Jr. - AU-002421-L
Gap, PA 17527 • (717) 422-9221

Plenty of Good Food Available
Announcements day of auction take precedence over previous advertising.

HISTORICAL 189 ACRE, JUNIATA COUNTY FARM at ESTATE SALE Sat., July 22, 1995 4 PM

Located approx 10 mi south of Rt. 322 Mifflintown Exit and approx 8 mi south of Mifflintown, along Rt 35, near the village of Walnut, Juniata Co.



This 189 ac farm is one of the most Historical & Productive farms in Juniata Co. The land lays level to gently sloping w/approx. 100 ac. cleared, bal wooded & offers some of Juniata Co.'s best hunting. With 1400' of road frontage along Rt 35 and only minutes away from Mifflintown & Rt 322, this farm offers endless Development potential. Buildings consist of a 2 sty brick "Colonial style house", a 2 sty stone & frame "Country style house", a large, beautiful stone & frame bank barn (built in 1792), a stone barnyard fence & other outbuildings.

There is endless opportunity & potential for this farm. **DON'T MISS SEEING IT ON THESE SHOW DATES - Sat., July 1 & 8 from 10 AM to 2 PM or Ph 717-436-2679 or 717-527-2405 for an appt. FOR PICTURED BROCHURE, TERMS & OTHER INFO, contact Auction Service.**

MARY S. HENRY ESTATE
H. Carlton Henry
Donald S. Henry, Co-Excs

LONG'S AUCTION SERVICE
RR 1 Box 458, Port Royal, Pa. 17082
Ph. 717-527-2405 or Fax 717-527-2941
AU001702L

PUBLIC AUCTION

**** ATTENTION FARMERS — BUILDERS — DEVELOPERS ****

63 M/L ACRE FARM — HARFORD COUNTY, MD

On SATURDAY, JULY 22, 1995 @ 10:00 AM

Real Estate — 12 Noon
POSSIBLE OWNER FINANCING
(Owners retired and moved to Florida)

including
3 BR BRICK RANCHER, FARM HOUSE W/2 APARTMENTS (POSSIBLE IN-LAW QUARTERS)
40'X70' IMPLEMENT BUILDING
ANTIQUES, FURNITURE, DOLLS, AVON, ETC.



1435 North Bend Road, Jarrettsville, MD 21084
Call for Brochure

OPEN: THURSDAY, JULY 13 @ 5-8:00 PM
SUNDAY, JULY 16 @ 1-4:00 PM

Real Estate: Main House features Formal LR; Formal DR; Lg Country Kit w/New DW, Range; Pantry; Lau Rm; Fam Rm w/FP & Sliders to rear Deck; 3 BR; 3.5 BA; Full Basement w/Kit, Lg. Fam Rm w/Sliders to Patio, Ut Rm, Storage Areas. 2 Car Att. Gar. Extras incl. Solar/Oil Heat; W/W Carpet. Quality Materials and Workmanship throughout with Outstanding Panoramic View of Countryside. **Farm House** is completely restored w/2 pri entr Apartments. Vinyl Siding. **Metal Implement Bldg** has Concrete Fl, Skylights, Cold Storage Rm. **Auctioneer's Note:** This very valuable property is in excellent condition. Ideal for farming, horse farm, or development of outstanding building sites.

Contents (Partial List): Mahogany Drop Leaf Table; Hutch; Sofas; Chairs; King BR Set; Coffee/End Tables; Oak Top Dinette Table w/Singer Sewing Mach. Base; China Cabinet; Pictures; Humidifiers; Convection Oven; Lamps; Ref.; Rocker; Bookshelves; Windows; Lawn Mower; Weed Eater; Hedge Trimmers; Picnic Table/Benches; Carpet; Dolls incl: Hallmark, Effanbee, Hasbro, Limited Convention Dolls, Misc. Small Dolls, etc.; Avon Collection; Misc. Sewing Items; and MORE.

DIRECTIONS: Rt. 165 N. of Rt. 23, R on Old Federal Hill. L on North Bend. R by North Bend Elem. School. (Signs Posted).

Terms: Real Estate — \$50,000 down at the Sale in Cash/Certified Funds/Ltr of Credit. Deposit increased to 10% of purchase price in 20 working days. 60 Day Settlement. Sold As Is. Time of the Essence. **Personal Property** — Cash/Check w/ID at Sale. 10% Buyer's Premium. Full terms and conditions announced prior to sale.



754 HICKORY AVE.
BEL AIR,
MARYLAND 21014

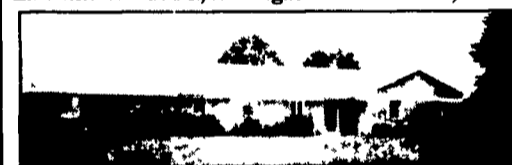
JAMES REID EDWARDS AUCTION SERVICE
AUCTIONEERS / APPRAISALS / LIQUIDATORS
Licensed/Bonded in MD & PA

FAX #893-2895
1-(410) 676-4700
1-(410) 879-1025

PUBLIC SALE

Fine Brick Ranch Style Dwelling
Lititz, Warwick Township
Thurs., July 20, 1995
At 7:00 P.M.

Located at 38 Brusen Dr., Warwick Township, Lancaster County, PA. (Directions: Rt. 501 South of Lititz, Turn East onto Woods Dr., turn right onto Brusen Dr.)



FINE BRICK RANCH STYLE DWELLING WITH TWO CAR GARAGE

This large brick rancher contains a family room with a stone fireplace & woodbox, wood beam ceiling, chair railing, living room picture window, eat-in kitchen with Brubaker custom made cabinets (raised panel cabinets w/double pantry, (3) Lazy Susans & desk), gas stove top, double wall oven, refrigerator, dining area w/bay window, lg. dining room w/chair railing, bow window, master bedroom w/dressing room w/double closets & lg. vanity. full bathroom off master bedroom. Bedroom (11'4x14'6) w/closet. Bedroom (11'x11'4") w/closet Bedroom/den 10'10" x11'7") w/closet Full bathroom w/double washbowl, tub/shower combination, closet, laundry room, w/auto washer, dryer, laundry sink, lg. closet Half bathroom off of laundry. Entry foyer w/slate floor & guest closet.

OVERSIZED TWO CAR GARAGE

With new overhead garage doors. This dwelling also features a full basement w/concrete floor (Separate furnace room, gas hot air heat w/central air conditioning, (2) gas hot water heaters, water softening system, borough sewer & water. Well & pressure system for outside use, 200 AMP electric service. Andersen thermopane windows. Lot Size: 152' frontage x 140 M/L.

This fine brick rancher is located on a nice level lot w/a beautiful view of Lancaster County! Quiet street w/easy access to Rt. 501.

The brick dwelling is in excellent condition and has many extra fine features!!

Open House: Saturday, July 8 & Saturday, July 15 from 1 p.m. to 3 p.m. or call (717) 626-7862.

No out of state checks unless accompanied by a current bank letter or prior arrangement with auction service.

Terms by

Joseph M. Brubaker
Miriam E. Brubaker

HORST AUCTS.
T. GLENN AU498L
TIMOTHY G. (717) 859-1331 • (717) 738-3080
THOMAS A. (717) 738-2132
"VOICES OF EXPERIENCE"