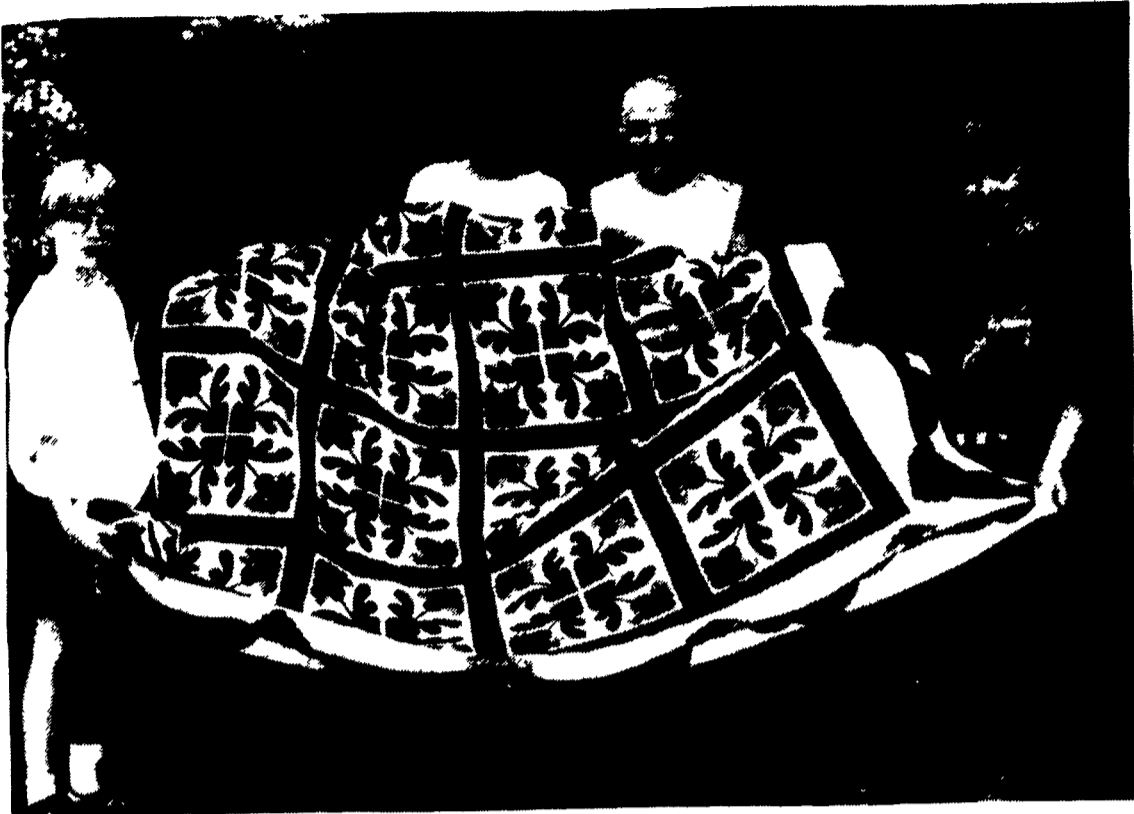


Locust Grove Benefit Auction Offers Plenty For Farmers



Members of the Pellman family, Lancaster, hold a vintage red and green peony quilt that will be sold over the auction block with a solid cherry pencil post bed at Locust Grove Mennonite School's 21st annual chicken barbecue and country auction, July 14-15. Rachel Thomas Pellman, middle, created the original applique design for the spread that was quilted by her mother, Edith Thomas, standing beside her. Jesse Pellman, left, and his brother Nathaniel are students at Locust Grove.

SMOKETOWN (Lancaster Co.)—Locust Grove Mennonite School will hold its 21st annual Chicken Barbecue and Country Auction on Friday and Saturday, July 14-15. The barbecue takes place Friday from 11 a.m. to 7 p.m. while the auction begins at 8 a.m. Saturday and continues throughout the morning and afternoon. A silent auction will also be held Friday at 6 p.m. The proceeds will benefit Locust Grove.

A highlight this year will be the auctioning of top-quality bull semen and technician service donated by Belmont Breeders, Intercourse. The bull, Weaverline Energy, was sired by To-Mar Blackstar. The Dam was Den-Vic Valiant, a Gold Medal Dam and Dam of Merit. Energy is ranked among the top 10 Blackstar sons per second consecutive summary, one of only two Blackstar sons to earn this ranking. His TPI of +1274 ranks him number seven on the Holstein Association's current High Ranking, Low Reliability Bulls list. This five-unit package will include technician service in Lancaster and Chester counties.

Other featured items include a truckload (approximately one ton)

of high-quality grass hay with free delivery on July 15 within a 20-mile radius of Locust Grove; a pickup load of split wood, also with free delivery; a new John Deere pedal riding tractor; and a 6" Foley Bell saw edger/planer.

Additionally, the auction will include the sale of art, quilts, crafts, Winross trucks, homemade food, and lawn, garden, and household goods. Of special interest is a hand-crafted pencil post bed built by Tim Horst, manager of the Old Road Furniture Company, Intercourse, which will be sold with a red and green Peony Quilt designed by Rachel Thomas Pellman, recognized nationally for her exceptional quilt designs.

Certificates will be sold Saturday afternoon for vacations, dinners, hunting trips, lodging, day trips, entertainment, IBM compatible computer training, a week of backyard Vacation Bible School for a family or small group of children, and many other special services.

The art auction will begin at 12:00 noon Saturday. Many well-known artists have contributed limited edition prints for this event, including Richard Bollinger, Myrtle Tremblay, Jim Daley, Julia Swartz, and Andy Smith. The art will be on display in a gallery at Locust Grove Friday, July 14, from 2 until 8 p.m. and again Saturday morning, July 15, until noon.

The items and services are donated by hundreds of businesses, churches, and individuals on behalf of the school. The goal for this year's Country Auction is to raise \$60,000.

Many foods will be available throughout the day Saturday, beginning with an Early-Bird Country Breakfast from 7 to 9 a.m. Subs, sausage sandwiches, lemonade, hamburgers, hot dogs, fresh fruit cups, a salad bar, hand-dipped ice cream, and a wide array of baked goods can also be purchased all day.

Children can participate in a Children's Fun Festival Friday from 4 to 7 p.m. and Saturday from 10 a.m. to 2 p.m. Activities will include an obstacle course, face painting, a moonwalk, crafts, movies, apple bobbing, and numerous games.

Locust Grove is located on the Old Philadelphia Pike (Route 340), approximately one mile from the Route 30 by-pass. For more information please call the school office at (717) 394-7107.



STEEL BALE BOXES

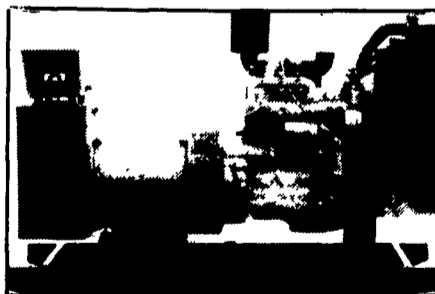


3 Sizes Available - 16', 18', 20' with or without running gear
• Also: will fit sides onto your flat wagon

NEW PRODUCTS! **Double Rake Hitch**
Farm Gates Made To Your Specifications

MFD BY: GAP HILL FARM WAGONS
5549 Lincoln Hwy. - Gap, PA 17527 717-442-9489
Call Bet. 8:30 & 9:00 A.M.

GENERATORS



AUTOMATIC and MANUAL SYSTEMS

**DIESEL
L.P. GAS
NAT. GAS
NEW & USED**

**LEROY SOMER
PTO ALTERNATORS**

**BRUSHLESS
INDUSTRIAL GRADE
11 to 60 KW**



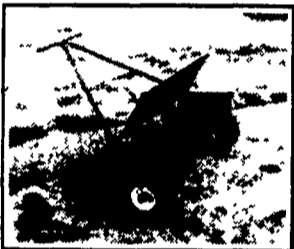
READY FOR THE NEXT STORM?

For Sales and Service Call The People Who Know Generators

MARTIN ELECTRIC PLANTS

280 Pleasant Valley Rd., Ephrata, PA 17522-8620

Tel: 717-733-7968 Fax: 717-733-1981



**NEW
Super Strong
Cow Walk Spreader**
10" Air Tire Wheels Push Easy,
Spreads Evenly - Holds 2 Bags
Of Limestone - Built To Last For
Years!

Huber's Animal Health Supplies

810 Tulpehocken Road, Myerstown, PA 17067

717-866-2246

Mon., Thurs. & Fri. 7:30 a.m. to 8 p.m.

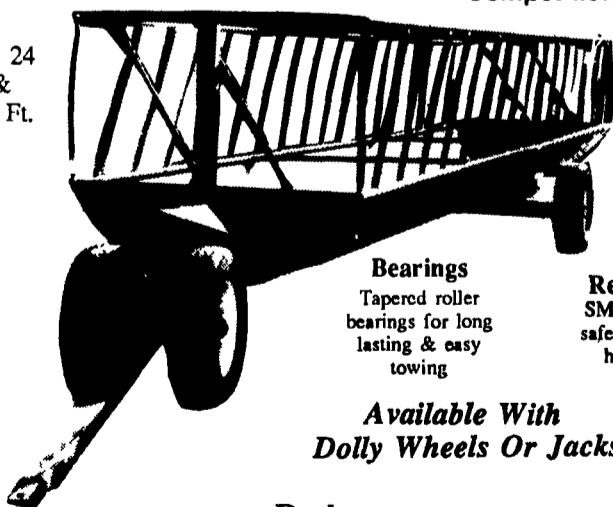
Tues. & Wed. 7:30 a.m. to 5 p.m.

Saturday, 7:30 a.m. to Noon

EXTRA HEAVY DUTY ALL-PURPOSE FEED TRAILER

11 Gauge All-NEW Metal Construction: 12% Heavier Than Competition

18, 24
&
30 Ft.



Bearings
Tapered roller bearings for long lasting & easy towing

Reflectors
SMV sign for safe towing on highways

*Available With
Dolly Wheels Or Jacks*

Dealers

SEWARD COLLARD

Oswaco, NY
(315) 784-5524

JOHN KING

Box 42
Greenpark, PA 17031

Perry Co.
RON REINFORD
New Bethlehem, PA
(814) 275-3033

**GAYWINDS TRAILER
& EQUIP. SALES**
Keymar, MD
(301) 775-7177

TIM REINFORD
Cumberland Co., PA
(717) 776-3389

AUKER AG PRODUCTS
Oakland Mills, PA
(717) 463-2394

THOMAS BACHMAN
Fallston, MD
(301) 836-6877
557-7529

BARTVILLE WELDING SHOP

177 S. Noble Rd., Chalfont, PA 18922, Bartville, Pa.