

Philadelphia Fruit Market

PHILADELPHIA
JULY 5, 1995

CITRUS FRUITS

---GRAPEFRUIT: MARKET STEADY
ctns AZ Red 23s 10.00-11.00 27s
10.00-12.00 32s 10.00-11.00 36s
10.00-11.00 40s 10.00 CA Red 23s 14.00
32s 14.00 36s 14.00 40s 12.00

---LEMONS: MARKET STEADY ctns
CA 95s fr qual 21.00 115s 28.00 fr qual
21.00-23.00 ord qual 15.00-16.00 few
19.00 140s 29.00 fr qual 22.00-25.00 ord
qual 20.00-22.00 165s 30.00 fr qual
25.00-26.50 ord qual 16.00 200s 28.00 fr
qual 22.00-26.00

---LIMES: MARKET ABOUT
STEADY 10 lb ctns FL Seedless Type 48s
4.25-5.00 54s 4.00-5.00 mostly 4.00 63s
3.50 MX Seedless Type 48s 3.00-4.00
mostly 3.50 54s 3.00-4.00 mostly 3.50 63s
3.00-4.00 mostly 3.50-4.00

---MISC CITRUS: OFFERINGS
INSUFFICIENT TO QUOTE

---ORANGES: MARKET STEADY
ctns CA Valencia 48s 20.00 fr qual
13.00-14.00 56s 20.00 fr qual 14.00 72s
18.00-20.00 mostly 18.00 fr qual
12.00-13.00 mos 13.00 88s 14.00-15.00
mostly 15.00 fr qual 12.00-13.00 mos
12.50 113s 12.00-13.00 fr qual
11.00-12.00 138s 10.00-11.50 fr qual
10.50 ctn 7-4 lb film bags 113s sz 10.00
4/5 buctns FL Valencia 64s 13.00 80s
13.00 100s 13.00 125s 13.00

---TANGELOS: OFFERINGS INSUF-
FICIENT TO QUOTE

---TANGERINES: OFFERINGS
NONE

---TEMPLES: OFFERINGS NONE

---BLUEBERRIES: MARKET LOW-
ER fits 12 1-pt filmwrpd cups MI med

8.00-10.00 NJ med-lge 10.00-12.00 mostly
11.00 fits 12 1-pt cups with lids NJ med-
lge 9.00-10.00 mostly 10.00 lge 11.00 sml-
med 8.00-10.00

---CRANBERRIES: OFFERINGS
NONE

---MISC BERRIES: TOO FEW SALES
TO QUOTE

---RASPBERRIES: TOO FEW SALES
TO QUOTE

---STRAWBERRIES: MARKET
SLIGHTLY HIGHER fits 12 1-pt bkts CA
med-lge 9.00-11.00 mostly 9.00-10.00 fr
qual & cond 5.00-8.00 one label 13.00
MELONS

---CANTALOUPE: MARKET LOWER
1/2 ctns/ctns AZ 15s 10.00 18s 8.00-10.00
CA 12s 9.00-11.00 mostly 10.00 few 8.00
one lot 7.00 15s 8.00-10.00 mostly 10.00
some 11.00 18s 8.00-10.00 mostly 10.00
few 12.00 23s 8.00-10.00 MX 9s
11.00-12.00 12s 11.00-12.00 15s
11.00-12.00 18s 11.00-12.00

---HONEYDEWS: MARKET HIGHER
2/3 ctns AZ 4s 12.00 5s 14.00 6s 14.00 8s
14.00 9s 12.00 CA 4s 11.00-12.00 5s
10.00-12.00 mostly 11.00 6s 12.00-13.00
mostly 13.00 8s 13.00 few 14.00 MX 4-9s
fr cond 10.00

---MISC MELONS: 2/3 ctns CA Cren-
shaw 5s 18.00 Juan Canary 8s 16.00 Santa
Claus 6s 16.00 8s 15.00

---WATERMELONS: MARKET
SLIGHTLY LOWER ctns per ctn FL Red
Seedless 5s 16.00 bins per melon FL Crim-
son Sweet 20-22 lb fr cond 1.25-2.00 GA
Sangria 20-22 lb 3.00-3.75 25-28 lb
4.25-5.00 mostly 4.50-4.75 Jubilation
20-22 lb 2.00-2.50 SC Sangria 20-22 lb
3.25-3.75 25-28 lb 4.25-5.00 Jubilee 20-22
lb 2.00

NON-CITRUS FRUITS

---APPLES: MARKET ABOUT
STEADY CONTROLLED ATMO-
SPHERE STORAGE ctns trypk WA

WAExFcy Red Delicious 72s 17.00 80s
16.50 88s 14.00-16.00 100s 14.00-15.50
138s 16.00 Golden Delicious 88s one label
17.00 100s one label 16.00 113s one label
16.00 Granny Smith 100s 20.00 U.S.
ExFcy Golden Delicious 64s 13.00 80s
13.00 88s 13.00 100s 13.00-14.00 mostly
13.00 113s 13.00 WAEFcy Red Delicious
64s 14.00 72s 14.00 80s 14.00 88s 14.00
100s 14.00 113s 14.00 125s 14.00 138s
14.00

---APRICOTS: OFFERINGS INSUFFI-
CIENT QUOTE

---AVOCADOS: MARKET STEADY
ctns 2 lyr CA Hass 48s 30.00-31.00 ctns lse
48s 28.00

---BANANAS: MARKET STEADY 40
lb ctns IMPORT 15.00 fair qual
12.50-14.00 sml 10.00-11.50 40 lb ctns
bagged IMPORT 15.00 ctns institutional
pk IMPORT petite 13.00

---CHERRIES: MARKET LOWER 15
lb ctns WA WAOne Rainier no sz mkd
50.00 20 lb ctns OR Bing 12 row sz & lgr
20.00 20 lb lugs WA WAOne Bing 11 1/2
row sz & lgr 20.00 fr cond 13.00 12 row sz
& lgr 20.00 fr cond 15.00-17.00

---FRUITS OTHER: fits 1 lyr CA Figs
Black Mission fr cond 48-54s 10.00-12.00
ctns 12 1-pt bkts CA Figs Black Mission
12.00

---GRAPES: MARKET ABOUT
STEADY 22 lb lugs AZ Flame Seedless
14.00-15.00 CA Thompson Seedless 17.00
lge 20.00 Flame Seedless 13.00-16.00
mostly 15.00 Black Seedless 18.00-19.00
MX Thompson Seedless sml-med
12.00-14.00 Flame Seedless 13.00-14.00
White Seedless Type 11.00-12.00 one
label 15.00 20-21 lb lugs bgd AZ Flame
Seedless 14.00-15.00 black fantasy seed-
less 16.00-17.00 CA Thompson Seedless
15.00-16.00 Flame Seedless 14.00-15.00
mostly 15.00 MX Flame Seedless 14.00
White Seedless Type 14.00-15.00

---KIWIFRUIT: MARKET ABOUT
STEADY fits 1 lyr CL BOAT 30s 7.00 33s
7.00 36s 6.50 42s 7.00 ctns 22 lb lse CL
BOAT 33 sz 10.00 39 sz 10.00-12.00

---MANGOES: MARKET ABOUT
STEADY fits 1 lyr MX Tommy Atkins 9s
5.50 10s 4.00-5.00 12s 4.00-5.50 mostly
5.00 14s 4.00-5.00 16s 4.00-5.00

---NECTARINES: MARKET STEADY
ctns 2 lyr trypk CA California Well
Matured Spring Red 48s 15.00 25 lb ctns
lse CA California Well Matured June Glo
72 sz 14.00 May Diamond 64 sz 17.00 80
sz 12.00-13.00 May Grand 56 sz 15.00 occ
14.00 Spring Diamond 72 sz 14.00 Spring
Red 70 series 14.00-16.00 80 series 13.00
56 sz 20.00 64 sz 15.00 occ 14.00 Super
Star 70 series 14.00-15.00

---PAPAYA: 10 lb ctns HI AIR 12s
14.00

---PEACHES: MARKET ABOUT
STEADY ctns 2 lyr trypk CA California
Well Matured Flavorcrest 40-42s
13.00-14.00 48-50s 12.00-13.00 Rich
Lady 40-42s 13.00-14.00 48-50s
12.00-13.00 3/4 buctns GA U.S. ExOne
Redhaven 2 1/4"up few 12.00 SC U.S.
ExOne Redglobe 2 1/2"up 10.00-12.00 2
1/4"up 8.00-10.00

---PEARS: OFFERINGS LIGHT 28 lb
ctns SF BOAT Packham Triumph 80s
18.00-19.00

---PERSIMMONS: OFFERINGS
INSUFFICIENT TO QUOTE

---PINEAPPLES: MARKET ABOUT
STEADY ctns 1 lyr HI AIR 6s 11.50-12.00
ctns 2 lyr CR 12s 13.00-14.00 14s
13.00-14.00

---PLANTAINS: 50 lb ctns CB
19.00-20.00 EC 19.00-20.00

---PLUMS: MARKET STEADY 28 lb
ctns lse CA California Well Matured Black
Amber 30 series 25.00-30.00 few 32.00 40
series 22.00-23.00 mostly 23.00 one label
28.00 50 series 20.00 one label 26.00 60
series 17.00-18.00 one label 24.00 fr cond
10.00-12.00 25 sz 34.00 70 sz 17.00-18.00
Friar 55 sz 22.00-23.00 60 sz 21.00-22.00
Santa Rosa 100 series 8.00-10.00 50 sz
20.00 65 sz 20.00 Aleta Rose 70 series
10.00-12.00 80 series 10.00-12.00 90
series 10.00-12.00

---POMEGRANATES: OFFERINGS
NONE

---PRUNES: OFFERINGS NONE

**Leinbach's Shippensburg
Produce Auction**

(717)532-5511
Shippensburg, PA
Average Prices Of #1 Produce
June 29, 30, July 3 and 4
Price Differences are Quality, Size or
Days

Open 10 a.m. Mon., Tues., Thurs., Fri.
Report Supplied by Auction

APPLES: EARLY LODI 4.50-5.50 1/2
BU.

APRICOTS: 12.00-16.00 8 QT. FLAT.

BEANS: GREEN 8.00-14.00 1/2 BU.

CHERRIES: SWEET 15.00-21.00 8 QT.
FLAT; SOUR 7.00-10.00 8 QT. FLAT.

CUCUMBERS: 6.50-8.50 1/2 BU.

PEAS: SUGAR AND SUGAR SNAP
8.00-12.00 10 LBS.; HULL 6.00-10.00 15
LBS.

PICKLES: SM. 10.00-13.50 1/2 BU.,
LGE. 3.50-7.50 1/2 BU.

POTATOES: UNCLASSIFIED 50 LBS.
4.00-5.25; NEW RED AND WHITE
5.00-8.50 1/2 BU.

RASPBERRIES: BLACK 12.00-18.00
12 PINT FLAT.

RED BEETS: 6.00-9.75 BU.

SQUASH: PATTYPAN 4.00-7.00 1/2
BU.; YELLOW 5.00-9.00 1/2 BU.

TOMATOES: LOCAL 20.00-26.00 25
LBS.

ZUCCHINI: 4.00-10.50 1/2 BU.

PERENNIALS: 8" POTS .50-2.00.

GERANIUMS: 4" POTS .30-.75.

NONSTOP BEGONIAS: 4" POTS.
.75-1.10.

4" POTS ALL OTHER VARIETIES:
.25-1.25.

SOUTHERN PRODUCE

CANTALOPES: SM. TO LGE.
1.00-1.85.

HONEYDEW: .75-1.35.

NECTARINES: 8.00-14.00 1/2 BU.

PEACHES: 6.00-13.00 1/2 BU.

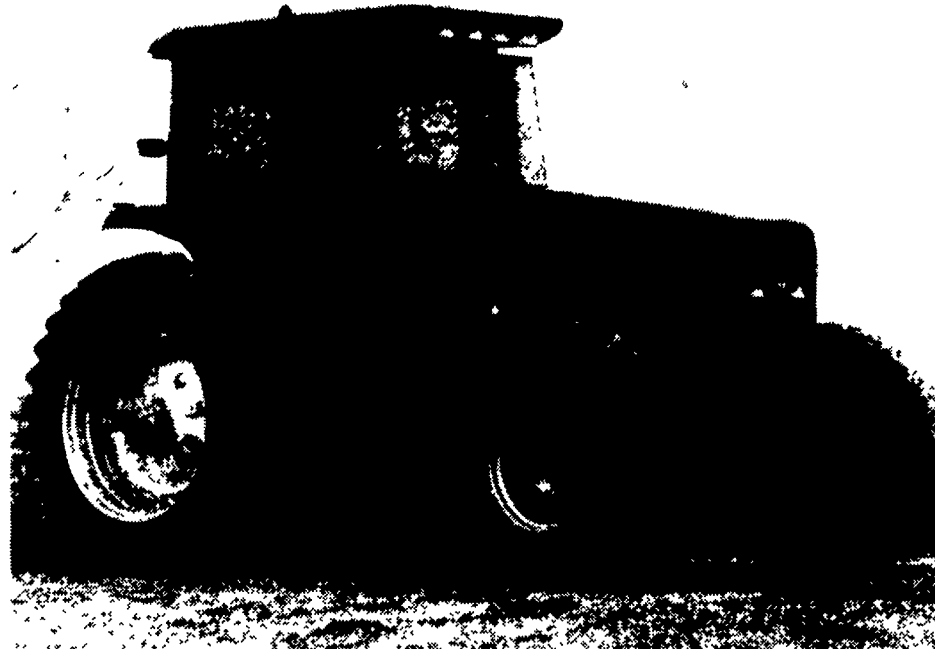
PEPPERS: 9.00-13.50 1 1/9 BU.

TOMATOES: 14.00-21.00 MED. TO
LGE 25 LBS.

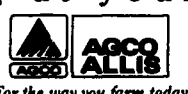
WATERMELONS: SM. TO LGE.
1.50-3.50; ICEBOX .75-1.50.

SWEET CORN: 2.25-2.85 DOZ.

**You'll run out of
daylight before
you run out
of ways to use it.**



The AGCO Allis 9650. A tractor with the power and versatility to take on any job you can think of. The 9650 with 155 PTO hp has a reliable Deutz air-cooled engine and the powershift transmission - the most advanced powershift ever put in a farm tractor. Control 18 forward and 9 reverse speeds with just a tap of your finger. Our cab-forward design, sloped hood and relocated exhaust provide better visibility and a more comfortable ride. Plus, the premium air-ride swivel seat and exclusive seat-mounted control console put everything at your fingertips. So before the sun sets, check out the 9650 powershift tractor at your local AGCO Allis dealer.

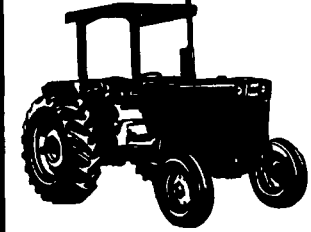


SEE YOUR DEALER TODAY!

- | | | | |
|---|--|--|---|
| MANOH MOTORS
On Rte. 553
Penn Run, Pa. 15765
412-254-4753 | SANDY LAKE IMPLEMENT
Sandy Lake, Pa.
412-376-2489 | B.H.M. FARM EQUIP., INC.
Anville, Pa.
717-867-2211 | HOLTRY'S EQUIPMENT
Roxbury, Pa.
717-532-7261 |
| HERNLEY'S FARM EQUIP., INC.
Elizabethtown, Pa.
717-367-8867 | NICHOLS FARM EQUIP.
Bloomsburg, Pa.
717-784-7731 | GRUMELLI FARM SERVICE
Quarryville, Pa.
717-786-7318 | C.J. WONSIDLER BROS.
Quakertown, Pa.
215-538-7523
New Tripoli, Pa.
215-767-7611
Oley, Pa.
215-867-8257 |
| B. EQUIP., INC.
Waynesboro, Pa.
717-782-3183 | | | |

**ATTN: AGRICULTURAL & INDUST.
DIESEL EQUIP. OWNERS**

HAVING DIESEL ENGINE PROBLEMS?



Contact Miller Diesel Inc.
for Complete Authorized
Fuel Injection Sales & Service.

Exchange units also Available
for Pumps, Injectors and Turbos.

For Further Information, write/call:
MILLER DIESEL INC.

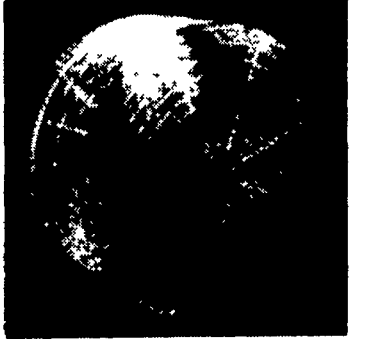
DIESEL FUEL INJECTION & TURBO CHARGER SPECIALIST
6030 Jonestown Rd., Harrisburg, Pa. 17112
1-800-296-5931 Interstate 81 Exit 26

FANS

DAYTON 24" 1/4 HP
TOTALLY ENCLOSED
MOTOR
4520 CFM
\$139⁵⁰

Free Shipping-Call For Details!

SCHAEFER
Ventilation Equipment
•24" •1/2 Horsepower
•Ball Bearing Motor
•Variable Speed



8500 CFM
\$219⁰⁰
4 More **\$209⁰⁰**

Low 2.5 Amp Motor
Less Cost Per CFM

Brandt's Farm Supply
(SURGE) 601 E. High Street, Elizabethtown 17022
(717) 367-1221