



'84 Chevy C-70, air brakes, 366 gas, 5 sp., 2 sp. rear, Mileage 330,100, Mileage on motor 65,604, 32,060 GVW.  
**\$5,000.00 OBO**  
 717-336-2047



**1978 GMC 6500**  
 in Ex. Cond., 2 Speed, Plus 5 Speed Trans., 900.20 Tires, 427 Gas Engine has 8 by 16 Dump Body with 4 ft. Sides. **\$6,000**  
**914-726-4180**

**USED TRUCKS**



'94 Dodge Laramie SLT 2500 4x4 8800 GVW 360 Magnum Auto w/OD, PS, PB, AC, Cruise, Tilt Wheel, PW, PDL, AM & FM Stereo Cass, Two Tone Green & Silver, 4,000 Miles  
**\$21,500**



'94 Chev 3500 4x4 454 FL, 4:10 Rears, PS, PB, AM-FM Stereo, 3,900 Miles, Red  
**\$19,400**

Financing Available

**MARTIN'S AUTO SALES**  
 1025 W. Main St., New Holland, PA 17557  
 (717) 656-6621

SS SAVE SS SAVE SS SAVE SS SAVE SS SAVE SS SAVE SS SAVE

**1995 DODGE RAM T-300 PICKUP**



25 AVAILABLE

**1995 DODGE DAKOTA CLUB CABS 2WD & 4WD**



20 AVAILABLE

**1995 RAM T-300 CLUB CABS 2WD & 4WD in Stock Or Order HURRY WHILE AVAILABILITY LASTS!**

Over 110 New Mini Vans In Stock!

We Are One Of The Largest Volume Dodge Truck Dealers East Of The Mississippi

Joe Dell's **L&B** DODGE CHRYSLER PLYMOUTH

ROUTE 422, ROBESONIA, PA (215) 693-5855

"National Award-Winning Dealer"

"Ask A Friend About Us"

1-800-800-2623

Anthony Landis

AUTO BODY & SALES

1400 E. Miles west of Blue Ball New Holland, PA • 717-656-0911

Specializing in Rebuilt Collision Damage Vehicles



'94 Ford F-150 XL, 300, AT, AC, 37,000 Mi., Runs & Drives **\$6,800**



'89 FORD F-150 XLT Lariat, 300, 5 Spd., AC, Cruise, Tilt, Dual Tanks, 53,000 Mi.



'94 GMC Sonoma SCS, Ext. Cab, 2.2, 5 Spd., AC, Cass., 27,000 Mi., **\$5,200**



'89 Ford Ranger STX Ext. Cab 4x4, 2.9L, 5 Spd., Cruise, Tilt, Cass., AC, 26,000 Mi., Left Front Damage **\$5,300**



'94 Ford Ranger XLT, Longbed, 2.3, 5 spd., AC, 9,000 Mi., **\$4,900**



'88 Ford F-150 Ext. Cab 4x4 XLT, V-8, AT, AC, PW, PDL, 53,000 Mi., PA Salvage **\$5,000**

Nicest Pre Owned Trucks Anywhere!

RTE. 422 WEST LEBANON, PA

(Across From Lebanon Valley Mall)

**CAR VILLAGE**  
 LEBANON, PA

PHONE 717-274-2000

Business Hours Mon-Thurs 9-9 Fri & Sat 9-4

**SPECIALIZING IN HEAVY DUTY TRUCKS**



**ALUMINUM BOX TRUCKS**  
 '94 FORD SUPER DUTY rear lift gate 8,000 Miles  
 '91 CHEVY H.D. 3500 H.D. V8, auto, 43,000 Miles



4x4 Chassis  
 '94 Chevy 3500 Silverado Long Wheel Base, 94" C.A. 454 f.i. 5 Sp O/D, A/C, Only 18,000 Miles, Factory Warranty A Real Powerhouse, Very Rare



READY TO WORK  
 '89 CHEVY 3/4 TON 4 Wheel Drive, 360 f.i., Auto., Tow Pkg., Dark Finish



ONLY 6,000 MILES  
 '95 FORD F-250 SUPER CAB 4 Wheel Drive XLT like Brand New, 351 Gas, V8, Auto, Has Everything Come Drive This One



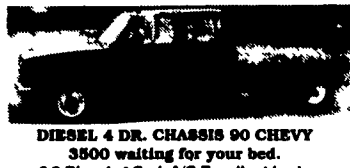
STAKE BODY DUMP  
 '92 FORD SUPER DUTY Big 18,000 GVW 480, Auto., Only 18,000 Miles, Nice Truck



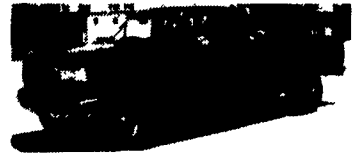
480 4x4  
 '92 FORD F350 XLT Big Strong 480 f.i. 5 Spd., A/C, Tow Pkg., This One Will Haul The Big Load



4X4 DUMP TRUCKS  
 '91 Ford F350 Diesel Power  
 '91 Chevy 3500 350 4 Sp., 37,000K



DIESEL 4 DR. CHASSIS '90 CHEVY 3500 waiting for your bed. 6.2 Diesel; 4 Spd. A/C Excellent body & Paint Dual tanks. 30,000 original miles \$13,900



4X4 '94 FORD F-250 SUPER CAB 7.3 Powerstroke Turbo Diesel 22,000 miles, Very Clean, Runs Strong, Captain Chairs



4x4 Flatbed Dump '89 Ford F-350 A Rare Find Only 65,000 Miles, 480 f.i., 5 spd., Dual Tanks, Tow Pkg., 8 Ft. Body



ROOM FOR THE FAMILY  
 '89 Chevy Super Cab 4 Wheel Drive, 380 f.i., Auto., A/C, Tow Pkg., 62,000 Miles, A Clean Truck



4x4 DIESEL SUPER CAB  
 '92 Ford F250 Custom Nothing Fancy. Just A Good Running Truck. 7.3 Diesel, AT, 4:10 Gears, Tow Pkg. **\$18,900**



THE NICEST '93 FORD F-250 SUPER CAB 4 Wheel Drive, only 17,200 miles Big 7.3 Diesel, 5 SP, Captain Chairs, 4:10 gears, Take a Look



POWERSTROKE TURBO DIESEL '95 FORD F-250 SUPER CAB 4 Wheel Drive, Totally awesome, 1,600 miles, 5 SP, Loaded XLT, Factory Aluminum Wheels, 4:10 gearing



3/4 TON 4x4  
 '89 FORD F-250 Heavy Duty 351 V8, Auto, AC, Tow Pkg, Excellent Body



HEAVY DUTY '94 CHEVY H.D. 3500 Chassis Big 18,000 GVW, 6.5 Turbo Diesel, Auto, 161 W.B., 84" C.A. 100,000 Mile Engine Warranty From Chevy



CENTURION CONVERSION  
 '94 FORD F-250 SUPER CAB Dressed to KUH 7.3 Turbo Diesel Auto, A/C, only 963 miles, Custom Wheels, Paint, Running Boards



CUMMINS TURBO DIESEL 4x4 '93 DODGE CLUB CAB DUALY Strong Truck Cummins Diesel, Auto, A/C, Remainder New Truck Warranty, 21,000 Miles



DIESEL 1 TON 4x4  
 '94 FORD F-350 XLT Very Strong Turbo Diesel AT, AC, XLT Pkg., 4:10 Gears, 25,000 Miles



'90 FORD AEROSTAR CARGO VAN Very clean, 50,000 Miles, V8, AT, A/C, Remaining Ford Factory Warranty **\$7,900**