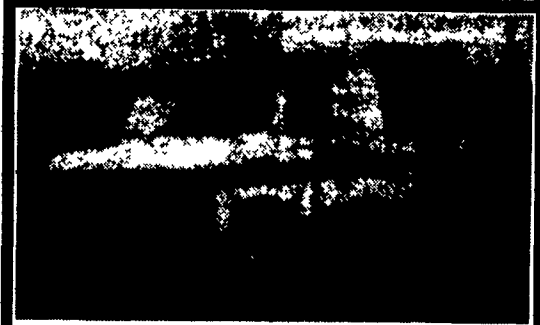


New 16'X6'4" Utility Trailer, 2-3500 Lb. Axles, \$695. Also 18'X6'10" (717)334-7334.
Pickup Tonneau Cover, Deluxe, Maroon- New Chev/GM \$75. Roof Luggage Carriers. (610)562-3523.

R Model Mach. 18' dump, 5 speed. 717-463-2328.
Rodgers 35 ton detachable lowbed, just redone, looks like new, \$12,900; 86 Ford F250 4x4 diesel, power angle plow, uses oil, 98,000 miles, \$5500 firm. 717754-7828.

Tag Along Trailer, Birmingham, 1980, 20-ton, 20' bed, tandem, \$3800. 717/354-3105.
Trailmobile dry bulk tank, could easily convert to grain hopper, \$2200. Lanco. 717-396-9718.




1987 Ford 350 Econoline Bus., 25 Passenger, V-8, Auto, P.S. P.B. Dual Air and Heat, Cruise, Nice Bus. \$7,995

COUNTRYSIDE AUTO SALES
(717) 664-2170 OFFICE
(717) 865-3488 HOME

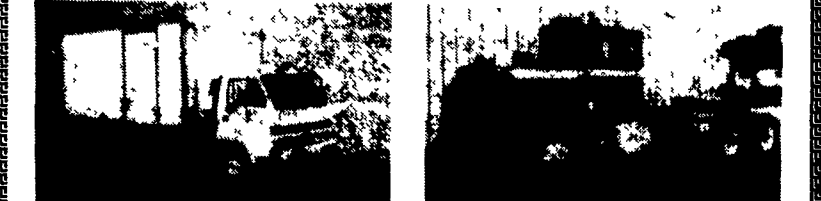
35 TRUCKS & TRAILERS

CASH FOR USED DIESEL TRUCKS

WE NEED 1/2 TON TO ONE TON:
• FORD DIESELS • DUALIES
• SUPERCABS • DUMPS
• CREW CABS • UTILITY BODY
• DODGE CUMMINGS • FLAT BEDS
• 2WD or 4x4 • CAB & CHASSIS
• SUPER DUTIES

LOW MILEAGE ONLY PLEASE
Before you sell or trade your diesel in somewhere else for LESS, CALL US!
We Pay More for Used Diesel Trucks Than Anyone.
TRY US!
717-949-2000  RD 7, Box 406 Lebanon, PA 17042
Ask for Smokey or Kay **KELLER BROS.**

RYDER ROAD READY USED TRUCKS
The Standard of the Industry
Don't Think Of Them As Used. Think Of Them As Having Undergone Extensive Road Testing



92 Isuzu NRR, 14' w/Liftgate, 5 Spd, 18,000 GVW, A/C & P/S, New White Paint.
88 Mack R688ST, 350 HP, 9 Spd, Reyco Suspension, 187" W/B, 10 Aluminum Wheels, Color Blue



88 Intl. 1754, 24' w/Liftgate, DT 360, 5 Spd, 25,000 GVW
91 GMC Topkick, 16' Body With Liftgate, CAT Power AT Trans, 25,000 GVW




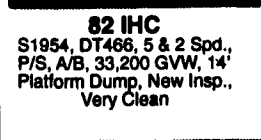

(10) '87 & '88 Trailmobile 42'x96" Van Trailers, Sliding Tandems, Roll Up Rear Door w/Side Doors, 4,000 Lb. Tuck-Away Lift Gates.
(4) 89 Freightliner FLD 12064S 350 Cat, 9 Spd., Jake Brake, Spring Susp. 180" W/B

That's because from the day each new vehicle joins our fleet, it goes on the most rigorous, carefully designed preventive maintenance programs in the industry. With check up after check up. And with one final, painstaking inspection right before it goes on the market. To make sure each and every one of our vehicles meet our Road Ready requirements. So if you're looking for a used truck, look to Ryder. We'll help qualified buyers with financing. And we'll give you a unique, 30-day limited warranty that shows how confident we are about the superiority of our maintenance standards. Call the Ryder location nearest you Today. And take a Ryder used truck for a little road test of your own.

- 1995 Chevy Lumina LS, 4 Dr., Black, V-6, AT, AM/FM Cass., AC, PW, PL, CC, 17,018 Mi. \$15,900
- 1994 Eagle Vision ESL, 4 Dr., Black, V-6 AT, AM/FM Cass., AC, PW, PL, CC, 48,370 Mi. \$11,800
- 1991 Chevy Cavalier, 2 Dr., Blue, 4 Cyl., 5 Sp., AM/FM Cass., AC, 82,952 Mi. \$4,800
- 1991 Mazda MX-6, Green, 4 Cyl., 5 Sp., AM/FM Cass., AC, CC, 45,719 Mi. \$7,900
- 1991 Olds Cutlass Supreme, International Series, Maroon, V-6, 4 Dr., AT, AM/FM Cass., AC, PW, PL, CC, 67,977 Mi. \$9,500
- 1990 Ford F-150 XLT, 4x4, Gray, V-8, AT, AM/FM Cass., AC, PW, PL, CC, 56,000 Mi. \$11,900
- 1989 GEO Tracker, Hardtop, Blue, 4x4, 4 Cyl., 5 Sp., 48,717 Mi. \$6,900
- 1988 Ford T-Bird Turbo Cpe., Black, 4 Cyl., AT, AM/FM Cass., AC, PW, PL, CC, 52,741 Mi. \$5,900
- 1988 Ford F-250, Custom, Tan, V-8, AT, AM/FM St., CC, 65,904 Mi. \$7,900
- 1988 Chevy Spectrum Express, Black, 4 Cyl., 5 Sp., 67,874 Mi. \$2,900

Brubaker's Auto Sales
Myerstown, PA
717-866-5237

R & R CAR AND TRUCK CENTER
1657 Rohrerstown Road, Lancaster, PA

-  92 IHC 4700 Cab & chassis, DT 360, 5 Speed, PS, Hydraulic Brake, Very Clean, Call For More Details
-  82 IHC S1954, DT466, 5 & 2 Spd., P/S, A/B, 33,200 GVW, 14' Platform Dump, New Insp., Very Clean
-  1979 IHC S1954, DT466, 5&2 Spd., P/S, Hyd. Brakes, 29,800 GVW, 16' C&C, with PTO, New Paint \$6,900 CALL FOR DETAILS!

Also Vans, Flats & Reefer Body For Sale - Many Sizes
Call Ray Leed 717-560-4901

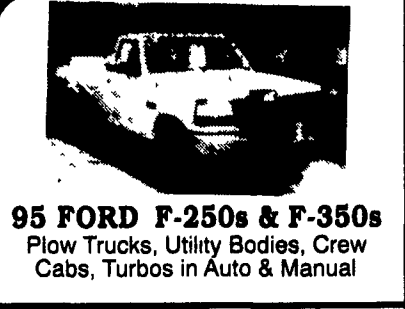
Mark Vills • Pickups • Broncos • Stake Body • Crew Cabs

Contours • Aspires • Diesel Pickups • Mustangs • Thunderbirds

Explorers • Grand Marquis • XLTs • Custom Vans



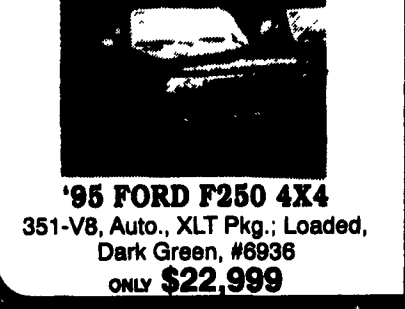
Great Selection
F250's & F350's
Supercab & Crew Cab
Power-Stroke Diesels
In Stock



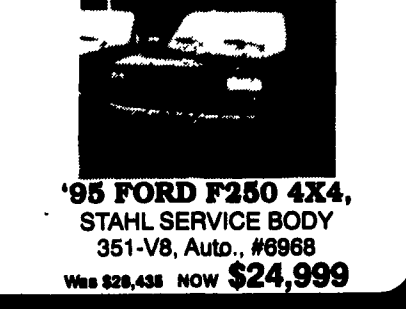
95 FORD F-250s & F-350s
Plow Trucks, Utility Bodies, Crew Cabs, Turbos in Auto & Manual



'95 FORD F350 4X4 DUALY
Centurion Conversion, 5-Speed, 7.3 Turbo Power Stroke Diesel,
AWESOME MACHINE



'95 FORD F250 4X4
351-V8, Auto., XLT Pkg.; Loaded, Dark Green, #6936
ONLY \$22,999



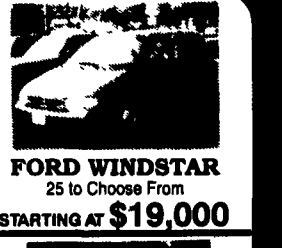
'95 FORD F250 4X4,
STAHL SERVICE BODY
351-V8, Auto., #6968
Was \$28,435 NOW \$24,999



MERCURY VILLAGER
10 to Choose From
STARTING AT \$20,000



FORD AEROSTAR
8 to Choose From
STARTING AT \$16,000



FORD WINDSTAR
25 to Choose From
STARTING AT \$19,000



'93 FORD F150 SUPER CAB
4x4, 302, AT, Loaded, XLT, 33,000 Miles, #P2253
WAS \$20,999 NOW \$19,999



'90 FORD F150 SUPER CAB
XLT, 302-V8, Automatic, Clean, only 50,000 Miles, #P2252
\$14,499



'95 GEO TRACKER
Automatic, Convertible, #66928
Was \$14,888
NOW \$13,999



'93 FORD SUPER DUTY
STAKE BODY
7.3L Diesel, XLT, AC, 5-Speed, Cassette, 39,500 Miles



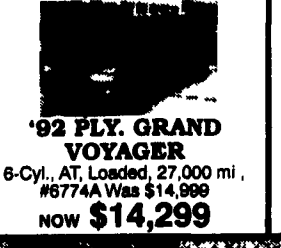
'94 MERCURY VILLAGER LS
8,000 Miles, Beautiful \$26,000 New #P2257 Was \$20,999
NOW \$19,999



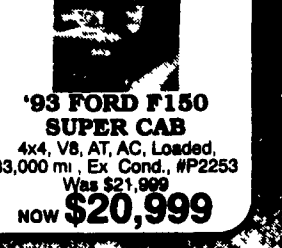
'93 MERCURY VILLAGER
Loaded, Only 28,000 Miles #P2283, Cost Brand New \$23,000
YOURS FOR ONLY \$17,499



'89 FORD BRONCO II
Eddie Bauer, 6-Cyl., Auto., Loaded, 48,000 Miles, #P2246, Was \$14,499
NOW \$13,999

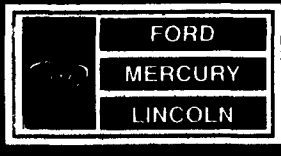


'92 PLY. GRAND VOYAGER
6-Cyl., AT, Loaded, 27,000 mi., #6774A Was \$14,999
NOW \$14,299



'93 FORD F150 SUPER CAB
4x4, V8, AT, AC, Loaded, 33,000 mi., Ex Cond., #P2253
Was \$21,999
NOW \$20,999

Unless the Sheehy Emblem is on Your Car or Truck... You Probably Paid Too Much!



SHEEHY LEBANON

-20th & CUMBERLAND STS. - RT. 422 WEST
9-9 DAILY; 9-5 SATURDAY • SHEEHY HOTLINE (717) 272-7671 OR 533-5293

PARTS DEPT. OPEN
DAILY 8-5
SAT 8-12
717-273-8168

Mystiques • Cougars • Continentals • Town Cars • 4x4s • Rangers