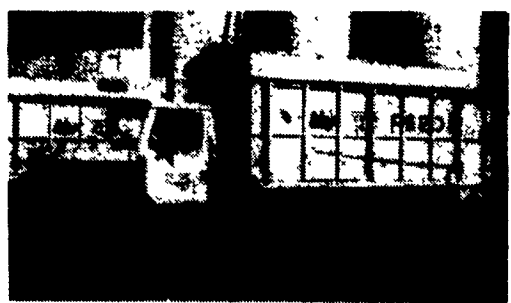


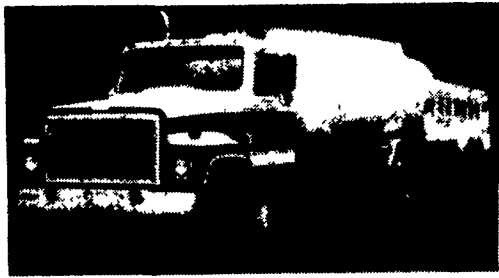
35 TRUCKS & TRAILERS



88 & 89 International S1954 Feed/Grain Trucks: DT466 Diesel 210 HP.; Power Steering; Air Brakes; 35,000 GVW; 15' Aluminum Dump Beds; Roll Tarp; Rear Auger; Blower; **\$21,500.00 each**
Curry Supply Co.
 Curryville, Pa
 1-800-345-2829

LOW BOY — DUMP TRUCK

1975 GMC 9500, 8V71, 13 Speed, Wetline, Good Rubber.....**\$3,500**
 1973 Hyster 25 Ton Fixed Neck Low Boy with Ramps.....**\$5,000**
 1983 Int. S1900 Single Axle Dump DT466, 210 HP, 5+2 Trans., 10' Steel Dump, Air Gate.....**\$9,000**
717-355-9870



International Tanker 290 Cummins - Runs super. 3000 gal. aluminum tank - 3 compartment. All new plumbing to pump in. Excellent condition - **\$11,500.**
717-741-0568

FOR SALE: 1975 IH 2070 tri-axle dump, 350 Cummins, Jake air gate; 1979 Ford F-350, 12' Eby livestock body. 717-362-3537.

GMC 1989, 1 ton, 4x4, \$4,000/OBO. 410-833-9091

MACK 1986, cab over, MS200, excellent, \$6,000/OBO. 410-833-9091

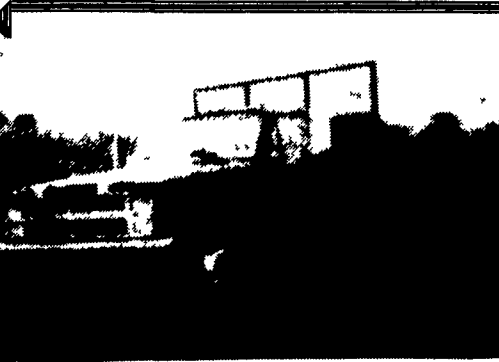
LN800 Ford Dump Truck, V8, Inspected Till 1, Nov. New Tires, Pintle Hook-Up, Well Above Ave. Condition. \$5500. Huntingdon Co. (814)632-7291.

Mack 1972 cement truck, 10yd, hydraulic mixer, rebuilt 237 engine, 6spd, P/S, 58,000 lb., Mack tires. \$7,000. (609)691-0526.



INTERNATIONAL 6x6 BRIDGE TRANSPORTING STAKE BODY TRUCKS

Front Winch, PS, Air Brake, 1400/20 Tires, 21 ft. Bed with removeable steel racks. Continental 6 cyl engine. LIKE NEW 600-2,500 Miles. Excellent for off road heavy duty cargo transporting with their all wheel drive and ability to climb a maximum grade of 70 degrees. Double Frame. A must for every farmer.
\$7,500 to \$10,500
(814) 834-1018 St. Marys, PA



1987 Chev. Custom Deluxe, 30 Series, 14 Ft. Rollback, 6.2 Diesel, 4 Speed, P.S., P.B., Runs Good **\$8,450**
COUNTRYSIDE AUTO SALES
(717) 664-2170 OFFICE
(717)865-3488 HOME

JONES GM PARTS CENTER

IS YOUR

Goodwrench ENGINE HEADQUARTERS

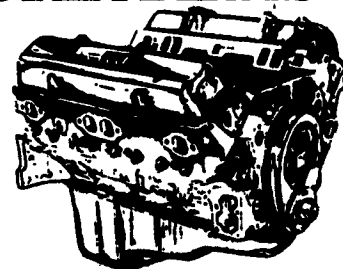
GM GOODWRENCH 350 V8 1973-85

Part Number 10067353

New Engine - Not Rebuilt
 36 Month or 50,000 Mile
 Warranty

\$1199⁰⁰

New Engine - No Core Fee



HIGH PERFORMANCE ENGINES NOW IN STOCK
 350-300 H.P. — **\$1695⁰⁰** 350-345 H.P. — **\$2895⁰⁰**

Call 394-0711 for prices on other New or Remanufactured Goodwrench Engines. 2.5 Liter thru 454 cid. Gas and Diesel

Chevrolet - Pontiac - Olds - Buick - Cadillac - GMC

JONES GM PARTS CENTER

1335 Manheim Pike, Lancaster, PA 17604

Hours: Mon.-Fri. 7:30-5

(717) 394-0711



LANCASTER'S LARGEST GM Truck Dealer & We're Getting Bigger!

JONES PONTIAC • HONDA GMC TRUCK
 1335 Manheim Pike, Lancaster
 Prices based on straight sale, Tax & Tags extra. Trades accepted at actual cash value. Must present this ad at time of purchase for sale price.
717-394-0711

JONES BEST BUY USED TRUCKS

<p>'90 CHEV ASTRO All wheel drive, AT, AC, V6, SLT, #5989 Was \$12,900 SALE \$10,950</p>	<p>'94 CHEV SUBURBAN 4x4 AT, AC, V8, Silverado #5941 Was \$28,995 SALE \$26,400</p>	<p>'86 GMC S15, XCab, 5 Spd, SLE, Cap #6022 Was \$4,995 SALE \$3,790</p>	<p>'90 GMC K15 4x4 SLE, AT, AC, V8 #6010 Was \$11,900 SALE \$9,950</p>	<p>DIESEL '93 GMC 14' CUBE VAN AT, AC #6001 Was \$18,995 SALE \$16,375</p>
<p>'93 CHEV S10 4X4 V6, AC, Tahoe, 5 Spd., #6006 Was \$14,400 SALE \$12,100</p>	<p>'91 CHEV S10 BLAZER 4x4 4 DR, AT, AC, V6, Tahoe #5948 Was \$12,995 SALE \$10,100</p>	<p>'90 CHEV K BLAZER 4X4 AT, AC, V8, Silverado #6004 Was \$12,900 SALE \$10,400</p>	<p>'90 GMC SAFARI VAN AT, V6, AC, SLE 8 Pass. #5946 Was \$11,995 SALE \$8,900</p>	<p>'92 GMC SAFARI ALL WHEEL DRIVE AT, AC, V6 #5901 Was \$14,900 SALE \$11,950</p>
<p>NEW '95 GMC 15' CUBE VAN 11,000 GVW, AT, V8, Supreme Body, (12' in Stock Also) #11659 List \$25,034 SALE \$22,800</p>	<p>'93 GMC SIERRA 3/4 4x4 AT, AC, V8, SLE, 17,000 Miles #5966 Was \$18,995 SALE \$17,200</p>	<p>'88 CHEV C30 Cab & Chassis, 4 Spd., V8 #5927 Was \$7,995 SALE \$4,850</p>	<p>'93 Chev Conversion Van AT, AC, 4.3 V6, 23,000 Miles, #6018 Was \$17,900 SALE \$14,870</p>	<p>'92 Dodge Conversion Van AT, V8, TV, VCR, AC #6012 Was \$16,995 SALE \$13,300</p>
<p>'79 BRONCO 4X4 V8, XLT, AT, Nice, 86,000 Miles #6009 Was \$4,900 SALE \$3,400</p>	<p>'87 CHEV SUBURBAN 4x4 AT, AC, V8, Silverado #5959 Was \$10,995 SALE \$8,550</p>	<p>'90 CHEVY C1500 XCAB AT, AC, V8, Scottsdale #5958 Was \$12,900 SALE \$10,900</p>	<p>'91 CHEV C10 350, AC, 5 Spd., Silverado #5929 Was \$12,900 SALE \$9,950</p>	<p>'91 GMC K15 4x4 Sportside, AT, AC, V8, SLE #5956 Was \$15,995 SALE \$13,450</p>