

VIRGINIA CATTLE & HOGS

North VA

**SOUTHSIDE, VA
JUNE 28, 1995**

Prices based on in weights
Feeder Cattle 175 head
Steers 41 head
Medium and Large 1 Medium and Large
2
500-600 64.00-72.50 63.00-68.00
600-700 65.00 60.00-65.25
700-800 62.
50 -
Holstein 9 head
Steer
Medium and Large 2
300-500 54.50
500-700 51.00
Heifers 58 head
Medium and Large 1 Small 1 Medium
and Large 2
300-400 - 55.50-58.50 -
400-500 58.50-63.50 48.50-53.00
54.50-57.00
500-600 55.00-61.50 - -
600-700 57.00-59.50 - -
Bulls 67 head
Medium and Large 1 Small 1
300-400 70.00-74.00 -
400-500 67.00-71.00 61.50-64.50

500-600 62.00-65.50 -
Slaughter Cattle 48 head
Slaughter Cows 46 head
Breaking Utility and Commercial 2-4
35.50 - 39.25
High dressing 41.00 - 42.50
Cutter and boning Utility 1-3 33.50 -
36.00
Baby calves returned to farms 18 head
newborn to 4 weeks
15.00-55.00 per head.
Goats 14 head (sold by the head)
Billies - Medium 53.00 - 67.00
De
Yearlings - 43.00 - 47.00
Source: Virginia Department of Agri-
culture and Consumer Services-
USDA Market News, Richmond, VA
804-786-3947
0755e bbl

**VA Weekly
RICHMOND, VA
JUNE 27, 1995**

Receipts for hot carcass basis totaled
2153 head.
Receipts for live basis plant delivery
(within a 30 mile radius) totaled 600 head.
Receipts for live basis country buying
stations totaled 405 head.

The Virginia direct hog market - trends
compared to last Monday.
Barrows and Gilts: hot carcass basis
163-191 lb. Carcass trend: 1.66 higher.
Price: 61.59 48% Lean yield <.27mm(1.15
In. Tenth rib) backfat. Live basis local
plant delivered (within 30 mile radius) US
2-3 220-250 lbs. Trend: Steady Price: few
37.00-40.00. Live basis Virginia Country
points US 1-3 220-250 Lbs 38.50.
Slaughter Steers and Heifers 0%;
Slaughter Cows 22%
Slaughter Bulls 4%, Slaughter Calves
and Vealers 0%;
Feeder Cattle under 600 lbs 59%, over
600 lbs 15%
Price ranges for Virginia weekly
auctions
Feeder Cattle total head count for all
weights 2257 head
Steers: Medium 1
300-400 73.00-83.00
400-500 67.00-82.00
500-600 64.00-78.00
600-700 63.00-75.00
700-800 57.50-69.00
800-900 54.75-59.75
Heifers: Medium 1
300-400 60.00-73.50
400-500 55.50-69.00
500-600 55.00-65.75
600-700 58.00-67.25
700-800 56.00-63.00
800-900 53.75-57.75
Slaughter Cows total head count 683
head
Utility and Commercial Cows 2-4
33.00-48.50
Cutter and boning Utility 1-3
32.00-45.25
Canner and low Cutter 1-2 26.00-39.50
Slaughter Bulls: head count 111 head
1-2 900-1300 lbs 43.00-59.00
1-2 1300-1600 Lbs 41.50-54.00
1-2 1600 Lbs and over 45.00-55.75

Slaughter Lambs total head count 420
head
New crop
Choice few Prime 1-2 few 3 90-109 lbs
84.25-96.00
Good and few Choice 1-2 74-109 lbs
80.50-85.00
Goats 10 head
Billies - Large 63.00 per cwt
Nannies - Large 68.00 per cwt
Kids - 38.00 per head
Yearlings - 34.00-46.00 per head
Slaughter Hogs 22 head
Barrows and Gilts
US 1-3 200-250 lbs 32.25-33.75
US 2-4 250-300 lbs 31.00-32.75
Sows
US 1-3 500 lbs and over 25.00-32.00
Special Slaughter Cattle Sale held at
Staunton, Virginia on June 20, 1995 136
head sold. State Graded.
Steers:
Choice 2-3 1100-1400 lbs 61.75-63.85
Choice 2-3 1450-1500 lbs 59.35-59.85
Select 2-3 1100-1300 lbs 58.50-60.00
Heifers:
Choice 2-3 1100-1300 lbs 57.00-62.25
Source: Virginia Department of Agri-
culture and Consumer Services-USDA
Market News, Richmond, VA
804-786-3947
1205e bbl

**SLAUGHTER STEERS: GOOD TO
CHOICE 57.00-66.60, MEDIUM TO
GOOD 54.00-58.00, HEAVY CHOICE
OVER 1450 LB. 58.50-61.75.**
**HOLSTEIN STEERS: HEAVY
50.00-56.50, LIGHT 42.00-50.00.**
**SLAUGHTER HEIFERS: GOOD TO
CHOICE 58.50-63.50, MEDIUM TO
GOOD 53.50-58.00.**
**BULLS: HEAVY 44.00-57.00, LIGHT
42.00-53.00.**
**COWS: FEW HIGH DRESSING UP TO
45.00, UTILITY (HOLSTEIN)
37.00-44.00, COMMERCIAL TO GOOD
32.00-39.00, CULL COWS 30.00 AND
DOWN.**
**VEALS: GOOD TO CHOICE
70.00-85.00, MEDIUM TO GOOD
50.00-69.00.**
**BOB CALVES: 42.00 AND DOWN.
HOLSTEIN BULL CALVES -
RETURN TO FARM (90 TO 120 LB.)-
90.00-112.00.**
**HOLSTEIN HEIFER CALVES -
RETURN TO FARM (100 TO 120 LB.)-
UP TO 180.00.**
**BEEF CROSS CALVES - RETURN
TO FARM UP TO 120.00.**
**HOGS: TOP QUALITY 44.00-45.00,
HEAVY 31.00-43.75, LIGHT
30.00-38.50.**
SOWS: 21.50-26.00.
MALE HOGS: 19.00-24.00.
**LAMBS 65.00-75.00; FEEDER
LAMBS 55.00-74.50.**
SHEEP 20.00-27.00.
**LIVESTOCK PRICES ARE ALL
GIVEN PER HUNDRED WEIGHT!**

**Friend's
Stockyard Inc.**
Accident, Md. 21520
Report Supplied by Auction
June 26, 1995
**STOCK BULLS AND STEERS
(200-500 LBS.) 55.00-74.00.**
STOCK HEIFERS: 55.00-68.00.

BH Beiler Hydraulics
DISTRIBUTORS

We Moved!

440 Concrete Ave., Leola, PA 17540
717-656-4878 FAX 656-4682

Box 56 RR1, Atglen, Pa 19310
610-593-2981

Est. 1979

Hydraulics • Pneumatics • Power Transmission

**Beiler Hydraulics has taken many steps to become your
one stop source for all your fluid power needs**

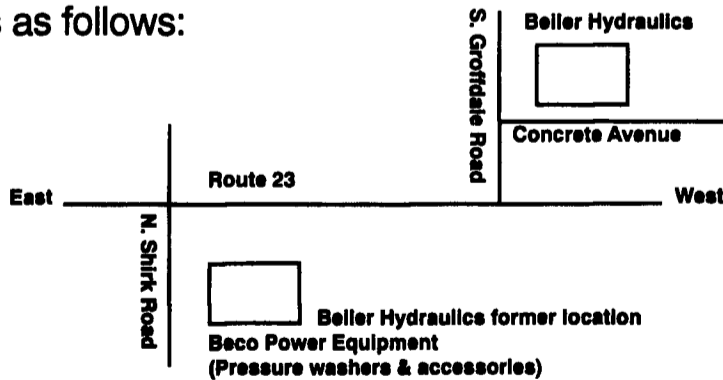
WE ARE MOVING!

Beiler Hydraulics is relocating to a much larger facility where we will be able to serve you better. The shop and parts counter will be closed July 3 and 4 of the big move. We will be open for your business in our new warehouse located on Concrete Avenue, Leola, on July 5.

Please update your files as follows:

Beiler Hydraulics
440 Concrete Avenue
Leola, Pennsylvania 17540

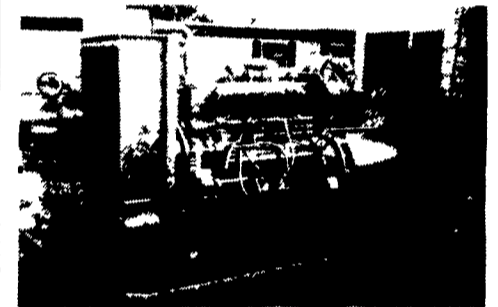
Phone (717) 656-4878
Fax (717) 656-4682



- New 20,000 Sq. Ft. Facility
- New Modernized Shop
- Improved Service
- Larger Inventories
- Better Pricing



**MARTIN
MACHINERY**



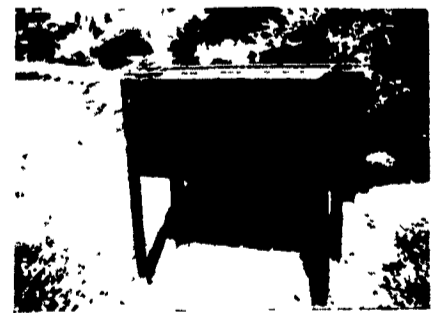
GENERATORS

Sales ★ Service ★ Rentals
★ Complete Generator Systems
★ PTO ★ Portables ★ 2-1600 KW
"We Service It If You Have It
And Sell It If You Need It"

34 W. Mohler Church Rd.
Ephrata, PA 17522

Tel: 717-738-0300
Fax: 717-738-4329

Family Size BBQ Grill



Holds Approx. 15 Legs & Thighs \$52⁰⁰

Picnic Size BBQ Grill



Holds Approx. 160 Legs.
Comes with retractable hitch. \$290⁰⁰

NICKEL MINE WELDING

2133 Mine Rd., Paradise, PA 17562
Ans. Service 717-786-7363 (7:30-9 AM)