

OK City Feeder Cattle
OKLAHOMA CITY, OK
JUNE 28, 1995

Compared to last Monday: Feeder steers steady to 3.00 higher with greatest advance over 800 lbs. Few feeder heifers firm. Steer and heifer calves steady to 2.00 lower. Trade extremely active for feeder steers; good for light supply of heifers; fair to moderate for calves. Quality plain to average, modest end-attractive. Weigh-ups of both calves and yearlings average to full. Yearling flesh slightly thin to medium; calves generally soft and medium fleshed to moderately fleshy. Rains in the combelt this past week had feeder cattle buyers in better mood as corn crop expectations have improved. Slaughter cows and bulls fully 1.00 higher in moderately active trading. 490 cows and bulls sold. Receipts this week 12,450; last week 12,393; last year 13,957. Supply consisted of 67 percent yearlings and few calves over 600 lbs; 29 percent calves under 600 lbs; 4 percent cows and bulls. Prices follow with weighted average price and weight in parenthesis.

Feeder Steers: Medium and Large 1 350-400 lbs (372 lbs) 82.00-87.25 (85.41); 400-450 lbs (419 lbs) 80.50-83.75, thin to 88.25 (85.87); 450-500 lbs (467 lbs) 74.00-83.75 (80.00); 500-550 lbs (515 lbs) 73.00-77.50 (75.95); 550-600 lbs (575 lbs) 67.00-75.75 (71.76); 600-700 lb calves (650 lbs) 64.25-70.25 (66.78); 600-700 lb yearlings (650 lbs) 67.25-71.00 (69.29); 700-800 lbs (750 lbs) 65.50-70.00 (68.02); 800-850 lbs (825 lbs) 64.25-69.00 (66.71); 850-900 lbs (874 lbs) 63.50-67.50 (65.20);

900-950 lbs (923 lbs) 62.25-65.00 (64.09); 950-1000 lbs (968 lbs) 60.25-64.50 (62.58); 1020 lbs 61.25; 1075 lbs 60.00; 1100-1150 lbs (1113 lbs) 59.00-60.25 (59.46).

Holstein: Large 2 550 lbs 58.75; few 600-650 lbs 52.00-54.00; 700-800 lbs 51.50-54.00; 800-850 lbs 51.75-53.00; 850-900 lbs 48.75-51.75; few 900-975 lbs 45.50-49.00.

Feeder Heifers: Medium and Large 1 300-400 lbs (350 lbs) 70.50-74.00 (71.03); 400-500 lbs (450 lbs) 65.75-70.00 (68.27); 500-550 lbs (525 lbs) 63.25-68.75 (66.51); 550-600 lbs (577 lbs) 62.25-67.25 (64.99); 600-650 lb calves (621 lbs) 62.75-63.50 (63.09); 600-700 lb yearlings (650 lbs) 63.00-66.00 (64.91); 700-800 lbs (750 lbs) 60.25-65.25 (63.08); 800-850 lbs (807 lbs) 59.00-62.25 (60.19).

Slaughter Cows: Cutter, boning and breaking Utility average dressing 38.50-41.50; high dressing 41.50-43.50, high dressing/high boning 44.25-45.00. Canner and low Cutter 31.50-34.50.

Slaughter Bulls: Yield Grade 1 1450-2200 lbs average dressing 49.25-53.00; high dressing 53.50-56.50, high dressing/high boning 54.00-58.25; low dressing 46.00-49.00.

Replacement Cows: Pretested for bangs, pregnancy, and age Medium and Large 1 High quality single head sales: Brangus Heifers 1000-1375 lbs 3-4 months bred 560.00-640.00; 850-1150 lbs 2 months bred 470.00-500.00. Pairs: Medium and Large 1 2-5 yr old 850-1000 lbs 250-375 lb calf high quality 660.00-730.00; 5-8 yr old 925-1175 lbs 150-275 lb calf avg quality 570.00-640.00.

Four States Livestock
Hagerstown, Md.
June 28, 1995

Report supplied by Auction

SLAUGHTER COWS: UTILITY 39.50-43.50; **HIGH DRESSING** 44.00-45.50; **CANNERS** 36.00-39.00; **SHELLY** 35.00 DOWN.

BULLS: YG#1 1300-1800 LBS. 47.75-49.00; YG#2 44.00-48.00.

FED STEERS: CHOICE 1100-1450 LBS. 62.00-64.25; **LOW CHOICE** 59.00-61.50; **CHOICE HOLSTEINS** 1200-1500 LBS. 51.75-55.75.

FED HEIFERS: FEW SELECT 1300-1500 LBS. **NO CHOICE** 52.00-57.00; **HOLSTEINS TO** 47.25.

VEAL CALVES: NONE; CULLS 85-110 LBS. 36.00-46.00; 50-80 LBS. 30.00-38.00.

FARM CALVES: HOLSTEIN BULLS #1 95-120 LBS. 90.00-110.00; #2 80-100 LBS. 50.00-80.00; #2 90-120 LBS. 150.00-180.00; **HOLSTEIN HEIFERS** 75-90 LBS. 90.00-147.00; **BEEF X BULLS TO** 107.00; **HEIFERS TO** 72.00.

BUTCHER HOGS: NO TOP WEIGHTS.

SOWS: 500-750 LBS. 30.00-31.25. **STEERS: MEDIUM AND LARGE FRAME** 350-600 LBS. 60.00-74.50; 600-700 LBS. 58.00-70.00; 700-900 LBS. 56.00-66.00.

HEIFERS: 300-500 LBS. 55.00-66.00; 500-700 LBS. 52.00-62.00; 700-900 LBS. 52.00-59.00; 4 LIMOUSIN X 61.00-66.00.

BULLS: 200-400 LBS. 60.00-75.00; 400-600 LBS. 60.00-72.00; 600-800 LBS. 50.00-58.00; 2 PURBRED LIMOUSINS 800-900 LBS. 650.00 AND 675.00; 1 SIMMENTAL X 1025 LBS. AT 57.00; **DAIRY REPLACEMENTS FEW LARGE FANCY SPRINGERS** 1025.00 AND 1075.00; **MEDIUM TO LARGE** 700.00-875.00.

LAMBS: CHOICE 90-120 LBS. 85.00; 70-90 LBS. 82.00-85.00; **GOOD 70-100 LBS.** 65.00-79.00.

SHEEP: 20.00-32.00; YEARLINGS TO 55.00.

GOATS: MEDIUM 35.00-62.00; **SMALL** 19.00-35.00.

PIGS AND SHOATS: BY THE HEAD FROM TESTED HERDS, 30-40 LBS. 21.00-24.00.

SELLING JULY 5 15 HEREFORD COWS MOST WITH YOUNG CALVES BALANCE DUE IN JULY.

Select 53.50-55.85...
HEIFERS: one Choice 60.00.
COWS: Breaking Utility and Commercial 39.00-41.25, **Cutter and Boning Utility** 37.00-39.60, **Canner and Low Cutter** 34.00-36.85. Shells down to 32.00.

BULLS: Yield Grade No. 1 46.00-47.75, No. 2 43.50-46.00.

FEEDER CATTLE: STEERS: 56.00-91.00; **HEIFERS:** 43.00-56.50; **BULLS:** 50.00-60.00.

CALVES 131...VEALERS: Utility 42.00-48.50.

FARM CALVES: No. 1 Holstein bulls 95/105 lbs. 105.00-122.50, No. 2 85/120 lbs. 82.50-105.00; **No. 1 Holstein heifers** 95/115 lbs. 175.00-195.00, No. 2 85/95 lbs. 135.00-167.50.

HOGS 63...BARROWS AND GILTS: US 1-2 230/250 lbs. 45.00-46.75, US 1-3 200/260 lbs. 43.00-44.85.

SOWS: US 1-3 300/500 lbs. 18.00-26.50, 500 lbs and over 27.00-29.00.

FEEDER PIGS 292...US 1-3 10/20 lbs. 12.00-22.00, 20/35 lbs. 25.00-33.00, 35/50 lbs. 35.00-46.00. --- per head.

SHEEP 16...SLAUGHTER LAMBS: Choice 80.00-96.00.

SLAUGHTER SHEEP: 24.00-31.00.

GOATS 20...Large 55.00-70.00, **Medium** 40.00-55.00, **Large Kids** 25.00-40.00, **Small Kids** 20.00-25.00. --- per head.

Belleville Livestock

BELLEVILLE, PA
JUNE 28, 1995
CATTLE 245.. SUPPLIED BY THE AUCTION.
HOLSTEINS: Choice 56.00-58.75,

Irrigation Pumps

The Aqua Pump



- * 2"x2" High Pressure Pumps
- * 85 PSI Max
- * 110 GPM Max
- * 5.5 hp Honda or Vanguard Engine
- * Roll Frame with 6.6 Gal. Fuel Tank

8 Hp Diesel Engine with roll frame and pressure pump, 75 PSI Max 130 GPM Max (65 GPM at 65 PSI)

- | | |
|---|--|
| Parts for
Honda Engines
Honda Pumps
IPT Pumps
Wisconsin Engines | Service for
Most brands of small
Gasoline & Diesel
Pumps up to 50 hp,
safety shutdown
systems designed and
installed pump
performance testing |
|---|--|

Don't scrap those good old pumps with obsolete or blown engine, Repower them with a new diesel or gas engine

Mfg & Distributed by
G D EQUIPMENT
385 W. Metzler Rd.
Ephrata, Pa 17522
(717) 859-3533

THE Scoular COMPANY

**BUYING AND SELLING
SOFT RED WHEAT
WHITE WHEAT
AND CORN**

Picked Up and Delivered Bids Available
Prices Quoted for Spot or Future Delivery

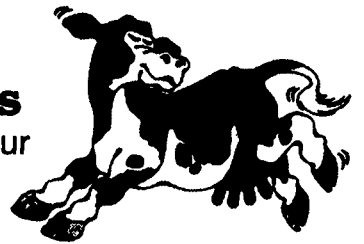
PROMPT PAYMENT

**ASK FOR
BILL KRUEGER
(800) 487-1474**

**WE WANT TO BUY
YOUR GRAIN**

**Increase Your
Income
From Milk Sales**

We are looking to increase our high quality milk supply in Chester, Berks and Lancaster Counties.



- No Coop Dues
- Solids Non Fat Premiums
- Quality Premiums
- Lower Hauling Rates & Stop Charges

From a proud neighborhood dairy in the 1920's to a modern manufacturing company of the 1990's, the Dietrich family-owned business continues to move forward. With the dedication of three generations and a heritage rich in experience and innovation, Dietrich's Milk Products faces the future with confidence. Give us a call and see what we are all about.

Dietrich's Milk Products, Inc.

100 McKinley Avenue
Reading, PA

Field Representative
Daniel Vosburg • New Holland, PA
(717) 354-5562

NEED TO CUT THE FEED BILL?

**DAIRY BLEND COMPLETE
AND CONCENTRATE FEEDS**

COMPLETE FEEDS

CONCENTRATE FEEDS

#79514
Dairy Blend Flakes
14% All Natural
*159⁰⁰

#51232
32% All Natural
Protein Pellets
*212⁰⁰

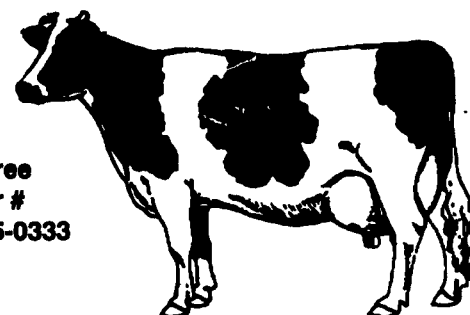
#79516
Dairy Blend Flakes
16% All Natural
*161⁰⁰

#51238
38% All Natural
Protein Pellets
*239⁰⁰

#79520
Dairy Blend Flakes
20% All Natural
*181⁰⁰

#50734
34% All Natural
Protein Pellets
*250⁰⁰

Toll Free
Order #
1-800-995-0333



Bulk Feed Available in 1 to 24 Ton Loads

Feed prices for week of July 3 and Subject to Change Weekly with Grain Market
Includes 8 ton volume discount and cash discount of 2 1/4% due 15th following month. Deduct additional \$3.00 per ton if paid in 10 days.



pennfield feeds

1-800-732-0467

Quality Value Service



**BINKLEY-HURST
BROS. INC.**

133 Rothsville Station Rd • Litz, PA 17543
717-626-4705

Machinery Sales
M-F 7 to 5 Sat. 7 to 11:30

NOTICE
EXTENDED PARTS
DEPT. HOURS.
Mon. • Tues. • Thurs. • Fri.
7:00 AM - 8:00 PM
Wed 7:00 AM - 5:00 PM
Sat. 7:00 AM - 3:00 PM
After Hours Emergencies
Call (717) 626-0885
(717) 626-5159
Sun. Closed - Lord's Day

WE SHIP PARTS DAILY

FEDERAL EXPRESS • TRUCK FREIGHT
AIR FREIGHT • B&H DELIVERY SERVICE

Case IH **Deere** **Rayco** **S**

CASE IH **BEARLINK™**
THE ULTIMATE HYDRAULIC TOP-LINK

David Brown **Case** **Tractor** **Implement**

Regular List \$669⁰⁰
Sale Price \$627¹⁰

Part #710-0310

Busy As A Bee?
No Matter Where You Are - You're Never Too Far!

Your Parts Are Just A Phone Call Away!

KINZE **KELDERMAN** **WOODS** **ATHENS**

CORN PLANTERS & GRAIN CARTS AIR RIDE MOWERS & BLADES Disk Harrows Coulters Chisels Chisel Plows

This Is Our Fax No. 717-626-0996

If You Have A Fax No., Let Us Know, We Can Communicate With You By Fax