



The Latuch Brothers Dairy Farms operation sits surrounded by its 406 acres, providing a peaceful setting for the county Farm Bureau educational/fun event, Day at the Farm.

Latuch Brothers Host For Day At Farm

GAY BROWNLEE
Somerset Co. Correspondent
ROCKWOOD (Somerset Co.) — For the past 11 years the Somerset County Farm Bureau has sponsored a public educational event, "Day at the Farm."

The 12th annual event is scheduled to be held from 1 p.m. to 4 p.m. Sunday, July 2, at the Latuch Brothers Dairy, located south of Somerset, off of Rt. 281.

Signs are to be erected along the highway, showing where to turn. Given good weather, a Sani-Dairy blimp should be tethered near the farm, serving as a landmark and curiosity.

Partners in the dairy farm operation, brothers Roger and David Latuch and their uncle Ted Latuch have been preparing for the event, which promises as much fun for the hosts as for the guests.

Milk chugging and hay bale tossing contests, hay rides, a petting zoo, sheep shearing demonstrations, and square dancers, free samples of beef, lamb, and pork, milk and dairy products and maple sundaes, and potato chips are a portion of the activities and festivities planned for this open-farm event.

A committee which organizes the event studied the layout of the farm to plan the design of event. The Latuchs said that is welcome planning, because of having finished planting and trying to get in the first cutting hay.

"We should be done with hay by this time, but this year's been an uphill battle because of the rain we've had."

The Latuchs 406-acre farming operation was expanded several years ago when they bought an adjacent farm to accommodate the partnership.



Latuch Brothers welcome visitors to their family farm operation for the annual Somerset County Day at the Farm event. From the left, David Latuch holds his son Scott, Ted Latuch, an uncle in the partnership, Roger Latuch and son Tim.

blind, takes care of the calves and does sire selection.

They normally raise their own replacements, but occasionally purchase additions.

Crops raised include 100 acres each of corn and alfalfa and 45 acres of oats.

Two 90-foot concrete silos and a

60-foot Harvestore are used to hold high moisture corn, corn silage and haylage, and along with a monthly addition of 500 pounds supplement, the cows are fed a totally mixed ration (TMR).

Forage testing occurs about monthly and a nutritionist is used to balance the ration, taking into

consideration pasture forages.

The Latuchs have laid out eight paddocks on the farm; six for night pasturing and two for daytime use.

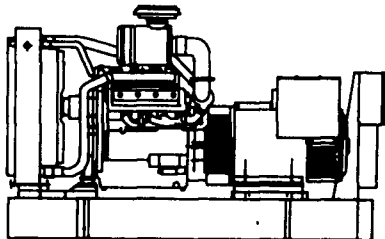
"We really like to pasture," Roger said. "We fell it's better all around for the cows, but it's not really intensive grazing. It's rota-

(Turn to Page A35)

**MILK.
IT DOES A
BODY GOOD.™**

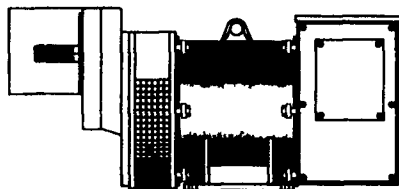
GENERATOR SYSTEMS

1-800-779-8809



**New & Used 5 to 2500 KW
Diesel • Propane • Natural Gas**

**24 Hour Emergency Service
Sales - Installation
Maintenance Contracts • Rentals**



**10 To 150 KW 1800 RPM Brushless
Tractor Driven Generators**

DYNA TECH[®] Ind.
Dynamic Technologies

DYNA-TECH INDUSTRIES

602 E. Evergreen Rd., Lebanon, PA 17042

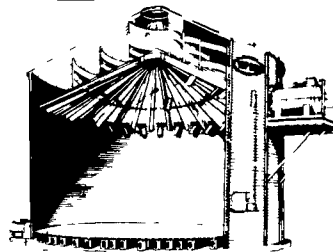
717-274-8899 Fax 274-5334

Ask About Our Lightning & Surge Protection Units
Panel Mount • Plug-in • Electric Fence Protection

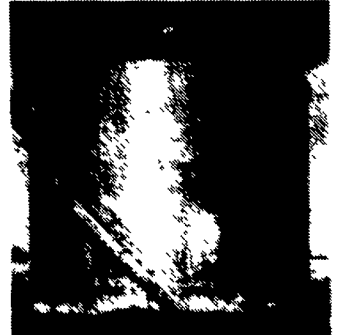
EMHERR GRAIN SYSTEMS SPECIALISTS

**90 DAYS SAME AS CASH OR
LEASING AVAILABLE**

TOP DRY GRAIN BINS

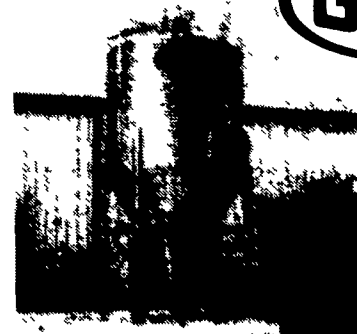


- Dry up to 1000 Bu. Per Hour
- Doubles As A Storage Bin
- 540 to 2100 Bushel Batch Capacity



FARM BIN

- In Bin:
- Stirring Systems
 - Aeration
 - Air Drying



FEED BINS

- Rigid Augers 4", 6" & 8"
- Flex Augers 2", 3", 3 1/2" & 5"



AUTOMATIC BATCH

Continuous Flow Grain Dryers

Serving The Industry For Over 30 Years



★ Full Line Parts Dept.
★ Sell, Service & Install ★
Rt. 272 South, Willow Street, PA 17584
Ph: 717-484-3321 or Toll Free 800-732-0059
Store Hours: Mon.-Sat. 7:30 AM to 8:00 PM

Serving The Industry For Over 30 Years