

DILLER EQUIPMENT

800-640-4448

Chambersburg, PA
Specializing In Truck Tankers

Complete Tankers

Only \$4,995

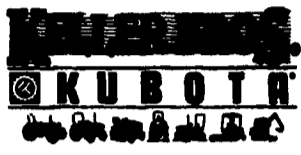
Tankers in Stock

Customized Tanks To Fit Your Truck and Your Needs

- 1500 - 7000 Gallons
- Rugged Steel Fenders
- Optional Fan Locations
- Matching Colors
- 1/4" Steel Tanks
- Large Lid Type Hopper
- Epoxy-Coatings Inside & Out



OVER 100 NEW KUBOTA TRACTORS IN STOCK!



FINANCING OR CASH DISCOUNTS AVAILABLE

TRACTORS & EQUIPMENT

WE SHIP PARTS UPS

Serving Central PA Since 1921

CALL FOR DETAILS ON LEASING

LEBANON
Rt. #7, Box 408, Lebanon, PA 17042
Rt. 419 1 mile West of Schaefferstown
717-949-2000

STORE HOURS
MONDAY-FRIDAY 7:30-5:00
SATURDAY 7:30-12:00

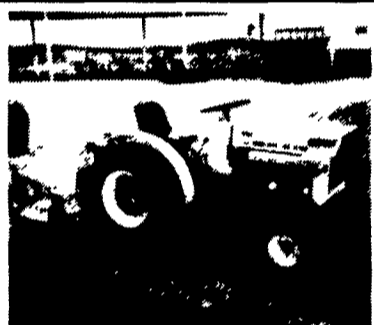
LANCASTER
1960 Fruitville Pike, Lancaster, PA 17601
At Route 30 & Fruitville Pike
717-569-2500

2 Locations

USED EQUIPMENT - Check for New Additions Weekly

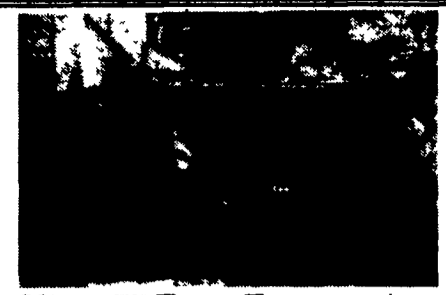


#24888 F-832 John Deere Frt. Mower 28 H.P. 3 cyl., water cooled w/6' mowing deck, very nice



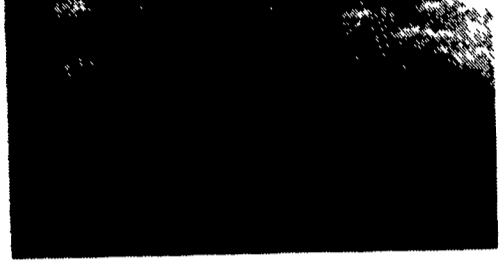
#24901 370 Satoh Beaver 15 H.P. water cooled diesel w/3 pt. & P.T.O. 48" Frt. Snow Blower and 48" Woods 3 pt. Finish Mower

- TRACTORS:**
- 24152 Kubota B7100 HSE 2WD, Hyst., w/5' Mid-Mower, 16 HP Diesel \$5,995
 - 24561 Kubota B7100 HSE, 16 HP, Diesel, Hydro w/48" Mid Mower \$5,575
 - 24569 Kubota B6000E, 12 HP diesel, w/4' Woods Mid Mower, 3 pt. \$3,200
 - 24797 Kubota B6100DT, 4WD, w/48" Mid Mower, 14 HP, 3 cyl Diesel. \$4,500
 - 24337 Kubota B6100HSE 14 HP, Diesel, Hydro, w/5' Belly Woods Mower \$4,995
 - 24350 Kubota G-4200H 12 HP Diesel L.G.T. w/ 44" Mower & Grass Catcher. \$3,495
 - 24486 Kubota L-2550 GST, Diesel, 4WD, w/Loader, 227 Hrs \$13,750
 - 24888 Kubota L-2550 GST, 29 5 HP, Diesel, 3 cyl., 4WD, Turf Tires, 6' Mid Mower, Real Nice \$10,975
 - 24523 Kubota 2850 DTW 32.7 HP Diesel 4 w/D Shuttle Trans, Turf Tires, 321 Hrs., Cab, New Warranty \$16,450
 - 24642 Ford 1720 4WD, 26 HP, Diesel, 4 W/D, Syn Shuttle Trans Loader, Remote, Good Cond \$12,975
 - 24719 John Deere 935 diesel, 60" Frt mower, w/catcher, 289 hrs \$10,600
 - 24696 Wheel Horse LT-1100 w/mower \$750
 - 24702 Wheel Horse 310-S L & G Tractor w/38" Mower, Very Good Cond..... \$1,350
 - 22101 Simplicity 6218 L&G Tractor - 18 HP Twin Cyl., Variable Speed, 48" Mower \$1,480
 - 21955 Snapper Comet Lawn Tractor Rear Engine Model, 26" Mower w/Bagger \$350
 - 23464 Simplicity GardenTrac, 14 HP, 44" Mwr, Elec Lift, 42" Fr Bid, 36" Tiller, Like New \$3,950
 - 20988 Gilson Lawn Tractor 11 HP, 38" Mower, Gear Drive \$485
 - 21885 Lawn Chief 6-830 Tractor, 8 HP, 30" Mower \$385
 - 24525 YAMMAR 146, 2WD, POWER SHIFT W/54" Front Blades & 50" Mower, Like New \$3,500
- MOWERS:**
- 24827 Kubota RC60-71B, 5' Mid Mower to fit B-7100 HST. (Like New) \$1,495
 - 24096 Kubota RE 48-62F Mid Mower For B-5200, 6200, 7200 Gear Drive **SOLD** \$795
 - 24273 Kubota MR-4800 4 Mid Mower to fit B6100 & B7100 Hyst Tractors \$495
 - 23776 Kubota RC-60-F24 Mower 5' Mower, Fair Condition \$650
 - 23308 Kubota RC60-72 Mower 60" Mower, Gear w/Clutch, Good Condition \$775
 - 22776 Kubota RC60-72H Mower 5' Mid-Mt Finish Cut For Parts \$275
 - 22148 Kubota RC60-82H Mower 5' Mid-Mower, Fits B-8200 HST Tractors, Never Used \$1,500
 - 23395 RC-54B 54" Kubota Mid Mower Fits B-1550 & B-1750 \$1,095
 - 23974 D88 Almo Flail Mower **SOLD** \$2,495
 - 24311 Woods RM-600, 3 Pt., Finish Mower, 4 Wheels (Never Used) \$1,795
 - 15184-15185-15354 Woods F35 Mower, 5' Mid-Mount, Fits Ford 1510 Tractor, New \$895
 - 24469 RM-59 Woods 5' Finish Mower, w/Front Roller \$775
 - 15186 Woods F35 Mower 5' Mid-Mount, Fits Ford 1710 Tractor, Brand New (Retail \$1,665) \$699
 - 24127 Woods RM-42 UB, e.e.w., 3 Pt Mower To Fit B6000 Kubota \$795
 - 24843 Landpride 3 Pt 6 Air Tunnel Finish Mower (Real Good Cond) \$1,350
 - 24823 Ford 730A, 3 pt 6 Mower Real Good Condition \$1,350
 - 24087 Ford-Jacobson Mower, 42" Mower to fit Ford or Jacobson **SOLD** & Garden Tractors \$125
 - 24470 3 Section Large Worthington Reel Mower \$695
- BLADES:**
- 24335 Ford 702A Frt. Blade To Fit 1110 & 1210 Ford Tractor \$595
 - 21854 Kubota G-2000 Blade, 48" Front Mount Fits G-200 Series Tractors \$150
 - 24432 Landpride 5' Spt. Blade \$175
 - M0309 Lehara F-1300 Blade 6 Front Mt H D Fits Ford 1300, 1500 1700 & 1900 Tractors \$695
 - 24272 Woods 5', 3 pt., Rear Blade \$175
- VAC UNITS:**
- 24236 3 Pt. PTO, Trac-Vac Blower Unit \$395
 - 21136 Kubota G-3008 Grass Catcher To Fit 48" LGT Mower \$335
 - 18204 Kubota G-3008 Vac System L&G Fits G Series Tractors With 48" Mower \$335
- MISCELLANEOUS:**
- 24845 Dragon 56" Grading Box, 3 pt Good Shape \$345
 - 24718 Kuhn L50 Tiller w/gauge Wheels 63" HD 3 pt \$1,295
 - 24641 8x12 2 Axle Trailer \$1,095
 - (Coming In) Kubota 5,000 w generator (Like New) \$1,450
 - 24587 Kubota B-748-A Snow Blower, Frt Mt, w/Elec Clutch \$575
 - 24161 Olathe "39" Silt Seeder Good Shape \$1,995
 - 23872 New Kelly BBK-9112 B. Hoe Bucket \$160
 - 23337 Brinly CC-100 Cultivator \$100
 - 22987 Brillion 6LB04-01 Seeder 64" Mower Size \$895
 - 23789 Sears Tow Behind Sweeper 32" Mower, good Shape \$1,195
 - 23536 International 9 Ton, 3 Axle, Ramps Fold Up, New Deck and Tires \$2,750
 - 23436 Agri-Fab Dump Cart, Never Used, 10 Cu Ft \$175
 - 24726 Brillion 5' Primary Seeder (Real Good) \$1,795
 - 24824 3 pt., 6" Rear Blade w/Gauge Wheel \$175
 - 24654 4x8 Eric Single Axle Trailer w/26" High Sides \$995



Oliver 77 Farm Tractor w/saw
Runs good. \$1,700.00
Call - 908-920-7334

Take Exit 20B
Off Of 83, 5 1/2 Mi. West
To Belmont Farm.



JD 4430, Duals, from North Dakota, nice \$13,000
Woods 320, 20 ft. Batwing Demo \$8,750

Also Available:
IH 1066, 4x4, 120 h.p., 540/1000, new TA & clutch, 2 outlets, v.g. rubber \$9,750
IH 1026 Fender, hydro, 115 h.p. \$8,500
IH 1206 w/cab, 540/1000, 24.5x32, 6,800 hrs., no 3 pt. \$4,500
Financing & Trucking Available -
410-833-9091

COWAN EQUIPMENT

Mutinsburg, PA
811 793 4293 Day or Evening
or 811 793 9797

Wanted: Fly Wheel & 3 Pt. Hitch
Complete For JD 730 Diesel

- JD 5400, 4x4, chopper
- NI 802, 4x4 w/chopper
- NH 1895, 4x4 chopper
- JD 375 round baler
- JD 2555, cab & air
- JD 2555
- JD 4050, 4 post, quad range
- JD 2950, fender
- JD 2950, cab & air
- JD 2750, 2WD
- JD 2350, 4x4
- JD 2350 '87 model, 1,800 hrs.
- JD 4440, cab & air
- JD 2940, cab & air, 4x4
- JD 4630, cab & air, power shift
- JD 4630, cab & air, quad range, 4x4
- JD 4430, cab & air, power shift
- JD 4430, 4 post, quad range
- JD 2630 w/145 loader
- JD 4520 w/year-round cab
- JD 4320 w/year-round cab
- JD 4020, '72 model, power shift
- JD 4020, '72 model
- JD 2020, diesel, 2,700 hrs.
- JD 730, diesel
- JD 620
- JD 520
- JD 450 crawler loader
- IH 1086, cab & air
- IH 1066, fender, black stripe
- IH 856
- Ford TW25, cab & air, 4x4
- Ford 6600
- White 2-105 fender, '78 model
- Oliver 1365, 4x4
- MF 375, like new, 1,000 hrs.
- MF 20 industrial w/loader
- NI 325 corn picker, 12 roll bed
- NI 325 corn picker, 8 roll bed
- JD 443 corn head
- JD 4 row narrow conversion corn head
- Gleaner 430 corn head
- White 1730 QT loader
- JD 148 loader
- Axle mount duals for IH 38" \$650

(717) 428-1517 or 717/741-1797
Fax No: (717) 428-2990

RR 2 Box 314A, Kreidler Rd.
York, PA 17403
(Exit 3 Off Interstate 83)

Douglas EQUIPMENT & SUPPLY CO.

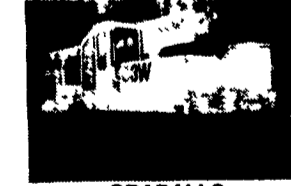
Authorized Dealer For
York Rakes & Power
Brooms



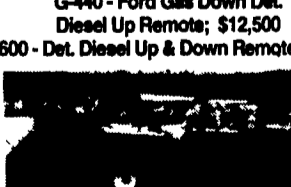
605 FIAT ALLIS 4WD LOADER
2 1/2 Yd. bucket - E-ROPS Nice
Clean Tractor \$19,500



644 LULL 4WD, 4 Wheel Steer -
Shooting Boom Perkins Diesel -
6000 Lb. 34' Reach \$24,500



ROLLERS
RAYGO ROMPER ROLLER
Mod 2-36, V-4 Wisc. Eng. - ART
- Vibratory - D. Drum Drive
Rubber Tire, Tandem,
3 Wheel, Starting at \$1500



GRADALLS
G3W-Det. Diesel Up & Down, Remote-
Joysticks, Nice Machine \$14,500;
G-440 - Ford Gas Down Det.
Diesel Up Remote; \$12,500
G-600 - Det. Diesel Up & Down Remote \$8,500



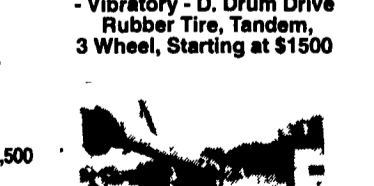
FORD - MOWING TRACTORS
(2) 2110's 8 Speed - Low Pro -Duals -
3 Pt. - PTO - Gas Side Mt. Sickle's; \$4,750



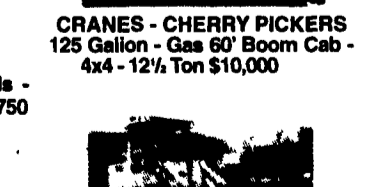
1989 443 BOBCAT,
1681 Hrs., Diesel \$5,000



1988 Bomag BW120AD Double
Drum Drive, Articulating,
Vibratory, Diesel, 1600 Hrs
Good Cond. \$11,900



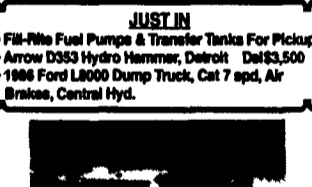
TROJAN 1500Z EROPS,
Bucket & Forks \$22,500



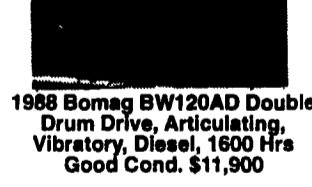
CLARK 45C 4 WD
Loader-Det. Diesel, Eropa-
17.5x25 tires \$20,000

Many Pieces
Not Listed!
If You Don't See It
- Give Us A Call!

- JUST IN**
- Fill-Rite Fuel Pumps & Transfer Tanks For Pickups
 - Arrow D353 Hydro Hammer, Detroit Del \$3,500
 - 1986 Ford L8000 Dump Truck, Cat 7 spd, Air Brakes, Central Hyd.



HUBER MAINTAINERS
M-500 Gas \$5,500
M-600 Gas Just In
M-650 Diesel, Front Blade, Wide Tires



We Buy & Sell Huber Maintainers For
Parts M-52's-500's-600's-700's-800's