

# Bobby Gerhart's Truck World

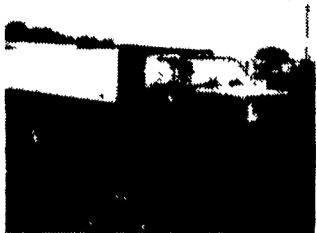
2460  
E. Cumberland  
St.  
Rt. 422  
Lebanon, PA  
17042  
717-273-7995

Mon. - Fri. 9-5, Sat. 9-3

OVER  
90  
TRUCKS



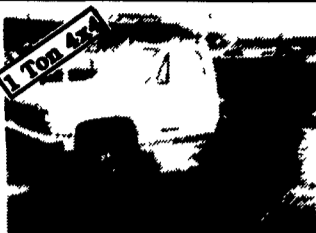
**95 FORD F150 XLT 4X4**  
Super Cab, 351 V8, AT, AC,  
C. T. only 5,000 Miles  
Factory Warranty



**84 CHEV C70**  
16 Ft. Stake Body w/Power Lift Gate,  
366 V8, 5-Spd. w/2 Spd. Rear,  
24,500 GVW, 62,000 Miles, Ex.  
Cond. #C264



**90 DODGE D350 4x4**  
w/Phoenix Walk-In Utility  
10,000 GVW, Dual Rear  
Wheels, 360, AT, PS, PB,  
73,000 Mi., Ex. Cond. #D138



**89 GMC K3500 4x4**  
Cab & Chassis, AT, AC



**86 FORD F350 CREW CAB  
DUALLY**  
460, AT, AC, Cap. Tan/Brown  
#F351



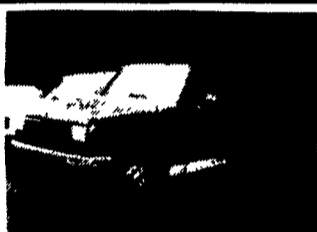
**80 CHEV C3500  
DUALLY**  
454-V8, AT, PS, PB, Clean For Year  
**Special \$5,995**



**89 UD 2000 16' FLATBED**  
Diesel, 6-Spd., AM/FM, 42,000  
Miles, White, Excellent Shape,  
#N108



**86 FORD F350**  
8 Ft. Dump 460, 4-Speed,  
45,978 Mi. Grey #F350



**89 FORD F250**  
Enclosed Utility Body, 351 V8,  
5-Spd. w/OD, 8600 GVW,  
PS, PB, Red #F358



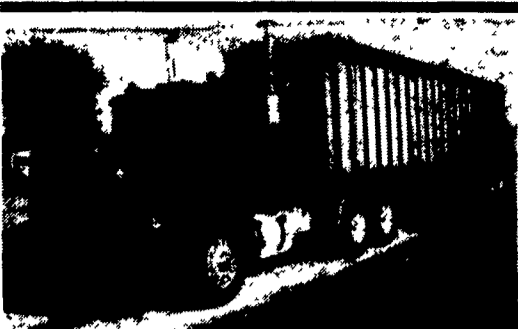
**84 FORD F700  
45' BUCKET TRUCK**  
Gas, Auto, Utility Boxes, 45'  
Boom, Outriggers, PTO or Electric  
Controls, Good Shape #F344



**94 FORD F450  
SUPER DUTY**  
Chassis, 7.3 Turbo Diesel, AT,  
AC, 8 Ft. Steel Flat Bed #F303



**93 FORD F450  
SUPER DUTY**  
12 Ft. Stake Body, 7.3  
Diesel, 5 Spd., AC #F349



**1991 White GMC**, air-ride, 444 Cummins,  
9 speed w/low hole, aluminum wheels  
& hubs, 24" rubber, 280,000 miles.  
1992 BoCat 42' walking floor trailer,  
24" rubber, aluminum wheels, 90 cu. yd.

**\$80,000**  
**(410) 928-5181**

- 1995 Dodge Dakota Sport, Black, Magnum V6, 5 Spd. AMFMCAS, AC, 3,336 Mi.....**\$10,900**
- 1993 Pontiac Grand Prix LE, Gray, V6, AT, AMFMST, AC, PW, PL, CC, 32,626 Mi.. **\$11,600**
- 1993 Chevy, 1500, Ext. Cab, Silverado P.U., 4x4, Black 350, V8, 5 Spd. AMFMCAS, AC, PW, PL, CC, 69,908 Mi.....**\$13,900**
- 1992 Ford F-150 P.U. Custom Blue, 6 Cyl., AT, AMFMST, AC, 112,969 Mi.....**\$8,900**
- 1992 Honda Accord EX, Tan, 4 Cyl., AT, AC, PW, PL, 70,810 Mi.....**\$10,800**
- 1992 Pontiac Bonneville SE, Blue, V6, AT, AC, PW, PL, CC, 62,573 Mi.....**\$10,900**
- 1991 Toyota Corolla DX, 4 Dr. Maroon, 4 Cyl., AT, AMFMCAS, AC, 45,700 Mi.....**\$7,600**
- 1990 Olds Cutlass Supreme, Blue/Gray, V6, AT, AMFMCAS, AC, PW, PL, CC, 37,516 Mi.. **\$8,600**
- 1989 Chevy Cargo Van, B-10, White, V6, AT, AMFMST, 64,890 Mi.....**\$5,900**
- 1988 Chevy S-10, P.U., Black, 4 Cyl., 5 Sp., AMFMST, 91,274 Mi.....**\$3,600**

**Brubaker's Auto Sales**  
Myerstown, PA  
**717-866-5237**

Nicest  
Pre Owned  
Trucks  
Anywhere!

**RTE. 422 WEST  
LEBANON, PA**

(Across From Lebanon  
Valley Mall)



**PHONE  
717-274-2000**

Business Hours  
Mon-Thurs 9-9  
Fri & Sat 9-4

## SPECIALIZING IN HEAVY DUTY TRUCKS



**ALUMINUM BOX TRUCKS**  
94 FORD SUPER DUTY  
rear lift gate 9,000 Miles  
91 CHEVY H.D. 3800 H.D.  
V8, auto, 43,000 Miles



**4x4 Chassis**  
94 Chevy 3500 Silverado  
Long Wheel Base, 84" C.A. 484 f.l. 5 Sp O/D,  
A/C, Only 19,000 Miles, Factory Warranty  
A Real Powerhouse, Very Rare



**READY TO WORK**  
89 CHEVY 3/4 TON  
4 Wheel Drive, 350 f.l.,  
Auto., Tow Pkg., Dark Finish



**ONLY 8,000 MILES**  
95 FORD F-250 SUPER CAB  
4 Wheel Drive XLT like Brand New,  
351 Gas, V8, Auto, Has Everything  
Come Drive This One



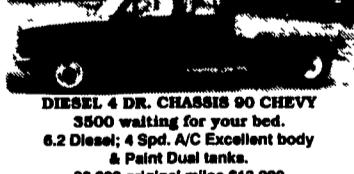
**STAKE BODY DUMP**  
92 FORD SUPER DUTY  
Big 15,000 GVW 460, Auto.,  
Only 18,000 Miles, Nice Truck



**4x4 DIESEL SUPER CAB**  
94 CHEVY 2500  
3/4 Ton Silverado, 6.5 Turbo Diesel, Auto,  
A/C, All Options, Tow Pkg., Drives &  
Rides Real Nice



**4X4 DUMP TRUCKS**  
91 Ford F350 Diesel Power  
91 Chevy 3500 350 4 Sp., 37,000K



**DIESEL 4 DR. CHASSIS 90 CHEVY**  
3500 waiting for your bed.  
6.2 Diesel; 4 Spd. A/C Excellent body  
& Paint Dual tanks.  
30,000 original miles \$13,900



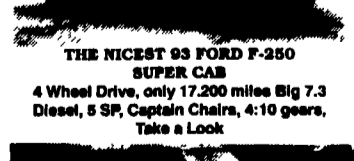
**4x4 Flatbed Dump 89 Ford F-350**  
A Rare Find Only 65,000 Miles, 460 f.l., 5  
spd., Dual Tanks, Tow Pkg., 8 Ft. Body



**ROOM FOR THE FAMILY**  
89 Chevy Super Cab  
4 Wheel Drive, 350 f.l., Auto., A/C, Tow  
Pkg., 62,000 Miles, A Clean Truck



**4x4 DIESEL SUPER CAB**  
92 Ford F250 Custom  
Nothing Fancy. Just A Good Running Truck,  
7.3 Diesel, AT, 4:10 Gears, Tow Pkg.  
**\$18,900**



**THE NICEST 93 FORD F-250  
SUPER CAB**  
4 Wheel Drive, only 17,200 miles Big 7.3  
Diesel, 5 SP, Captain Chairs, 4:10 gears,  
Take A Look



**ALUMINUM BOX FOR SALE**  
14 Ft. Body  
Roll Up Rear Door  
Slide Out Ramp



**HEAVY DUTY 94 CHEVY H.D. 3500 Chassis**  
Big 15,000 GVW, 6.5 Turbo Diesel, Auto,  
161 W.B., 84" C.A. 100,000 Mile Engine  
Warranty From Chevy



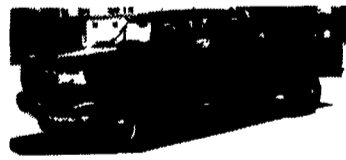
**CENTURION CONVERSION**  
94 FORD F-250 SUPER CAB  
Dressed to Kill 7.3 Turbo Diesel Auto, A/C,  
only 983 miles, Custom Wheels, Paint,  
Running Boards



**CUMMINS TURBO DIESEL**  
4x4 93 DODGE CLUB CAB DUALLY  
Strong Truck Cummins Diesel, Auto, A/C,  
Remainder New Truck Warranty, 21,000 Miles

**\$7,900**  
90 FORD AEROSTAR CARGO VAN  
Very clean, 50,000 Miles, V6, AT, A/C,  
Remaining Ford Factory Warranty

## HARD TO FIND Powerstroke Turbo Diesels



**4X4 94 FORD F-250 SUPER CAB**  
7.3 Powerstroke Turbo Diesel 22,000  
miles, Very Clean,  
Runs Strong, Captain Chairs



**POWERSTROKE TURBO DIESEL**  
95 FORD F-250 SUPER CAB  
4 Wheel Drive, Totally awesome, 1,600  
miles, 5 SP, Loaded XLT, Factory  
Aluminum Wheels,  
4:10 gearing



**POWERSTROKE 4X4**  
94 FORD F-250 XLT  
Beautiful, Like New, Only 4,600 Miles, 5  
Spd./ A/C, H.D., 8600 GVW, You Gotta  
See It