

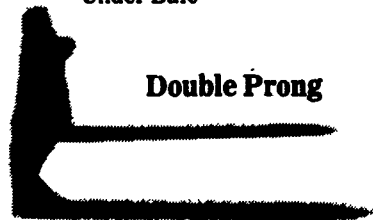
PAUL B. **Zimmerman**
INC.

3 POINT BALE MOVERS



Single Prong

The Same Unit Can Be used With One Prong For Center Of Bale Or Two Prongs For Under Bale



Double Prong

Plus P.B. Zimmerman Headlocks, Comfort Stalls, Headgates, Gates, Fencing, Hay Feeders and More!

Accessories in Stock Too!

ROVENDALE AG & BARN EQUIP.

717-338-9564 or 717-712-4226

Hours: Mon-Fri 8 to 5, Sat 8 to 12

DeLaval

- 10 Auto Cord Takeoffs For Stanchion Barn
- 12 Auto Cords for Parlor
- 3" Low Line for Double 8 & Double 12 Parlor (Parallel)
- 2 3" SS Double/Top Entry Receivers
- 24 Super-flow units
- 24 Delatron Pulsators
- 12 SST take offs
- Double 9 herringbone, SST takeoffs, 3" low line, blue diamond breast rail, 2 years old
- Vacuum pump w/15 hp motor
- Double 6 3" low line w/washer
- Rationmaster computer feeder w/5 stations
- Double 4 Parlor w/take offs & weigh jars
- Double 4 parlor w/take offs & 2" low line
- 78 vacuum pump
- 8 Super flow claws
- 8 Delatron pulsators
- 6 85 lb. weigh jars
- 8 65 lb. weigh jars

Boumatic

- 8 2100 take offs
- 6 Little Champ take offs
- Double 4 2 1/2" low line w/washer
- Double 8 3" low line
- Double 6 3" low line
- DB2000 vacuum pump w/10 hp motor
- 4 star flow claws & shells
- Claws pulsators & washer

Westfalia

- Double 8 Blue Diamond parallel parlor
- Metatron take offs & meters
- Back flush system for double 4
- Double 8 w/DeLaval stalls & Westfalia 3" low line, 36' Westfalia crowd gate
- 10 Station computer feeder
- 4 station computer feeder
- 12 take offs
- 12 Pulsators
- 12 claws
- 8 claws w/shut offs
- 2800 Vacuum Pump w/5 HP motor

Surge

- Double 6 Super Stall Herringbone Stalls
- Double 4 Easy Milking Herringbone Stalls
- Double 12 3" low line
- 3" double 4 low line
- 16 Eclipse Milkers w/pulsators
- 7 HTO air takeoffs
- 3" lowline, for double 6
- Electrobrain washer
- (8) weigh jars w/bracket
- (16) VSO take offs
- Double 4 parlor w/take offs & 2" low line
- Double 6 parlor w/take offs & 3" low line
- 100 plus vacuum pump

Miscellaneous

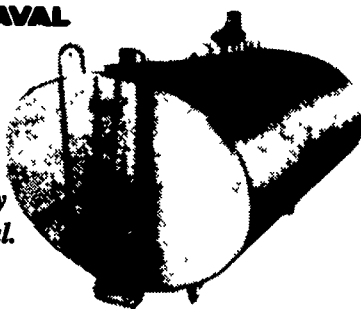
- 14 Germania Model B Takeoffs
- 12 Chortime feeders w/Big Dutchman feed system
- 8 Germania Milking claws & shells
- Metal free stall dividers
- (2) 2" SS Pipeline for 30 stanchion barn, DeLaval, Boumatic
- 20x50 Harvestore, no unloader
- Buy & Sell used milk tanks - any size

Freddie S. Smith
703/639-2262

OUR SPECIALTY IS
SALES AND SERVICE OF
NEW & USED BULK MILK TANKS

DE LAVAL

Featuring
The
DeLaval
New Century
600-5,000 Gal.



We Will Service Any Make Bulk Tank

H.W. MARTIN REFRIGERATION SERVICE

501 E. Woods Dr. Lititz, PA 17543
Phone: (717) 626-6355

ATTENTION
BUY OUT FARMERS
We Need Good Used Tanks
600 - 6,000 Gal. - Call Us

- | | | |
|-----------------------|-------------------------|------------------------|
| • 200 Gal. Sunset | • 600 Jamesway | record |
| • 200 Gal. Sunset | • 700 Gal. Mueller | • 1250 Gal. Girton D-5 |
| • 250 Gal. DeLaval | • "OH" | • 1500 Gal. DeLaval |
| • 250 Gal. | • 735 Gal. Sunset | • 1500 Gal. Dari-Kool |
| Jamesway | • 800 Milkkeeper | • 1500 Gal. Surge |
| • 250 Gal. Mueller | • 800 Gal. Mueller | • 1500 Gal. Mueller |
| • 300 Gal. Girton | • 800 Gal. Mueller | • "O" |
| • 300 Gal. Mueller | • "M" | • 1500 Gal. Girton |
| • 300 Gal. Storage | • 800 Gal. Girton D-4 | • 1500 Gal. Zero |
| • 300 Gal. | • 800 Gal. Mojonier | • 2000 Gal. Girton D-5 |
| Majonnier | • 800 Gal. Mueller | • 2000 Gal. Dari-Kool |
| • 300 Gal. | • 800 Gal. Mueller | • 2000 Gal. Mueller |
| Jamesway | • "M" | • "OH" |
| • 400 Gal. Mueller | • 800 Gal. Mueller | • 2000 Gal. Girton D-5 |
| • 400 Gal. | • "OH" | • 2000 Gal. Surge |
| Mojonier | • 800 Gal. Sunset | • 2500 Gal. Milkkeeper |
| • 400 Gal. Girton | • 900 Gal. Mueller | • 2500 Gal. Girton |
| • 400 Gal. Zero | • "M" | • 2500 Gal. Walker, |
| • 500 Gal. Girton | • 1000 Gal. Sunset | Storage |
| • 500 Gal. Milk | • FT | • 3000 Gal. Mueller |
| Keeper | • 1000 Gal. Sunset | • "OH" Late Model |
| • 500 Gal. Mojonier | • RD | • 3000 Gal. Dari- |
| • 500 Gal. Sunset | • 1000 Gal. Mueller | Kool Late Model |
| • 500 Gal. Jamesway | • "O" | • 3000 Gal. Storage |
| • 500 Gal. Mueller | • 1000 Gal. Girton D-5 | • 4000 Gal. Mueller |
| • 500 Gal. DeLaval | • 1000 Gal. Mueller | • 4000 Gal. Mueller |
| • 500 Gal. Mueller | • "OH" | • "OH" |
| OH | • 1000 Gal. Sunset | • 4000 Gal. Storage |
| • 600 Gal. Mueller M | • 1000 Gal. Dari-Kool | • 4000 Gal. Girton |
| • 600 Gal. Sunset | • 1000 Gal. Mueller | D-5 |
| • 600 Gal. Mueller | • OH, Record | • 4000 Gal. Mueller, |
| • "OH" | • 1000 Gal. Mueller "M" | record |
| • 600 Gal. Mueller | • 1250 Gal. Dari-Kool | • 5000 Gal. Mueller |
| • "OH", Record. | • 1250 Gal. Mueller | • 5000 Gal. Zero |
| • 600 Gal. Girton | • 1250 Gal. Mueller, | • 6000 Gal. Walker |
| • 600 Gal. Milkkeeper | | |

HEAT EXCHANGERS

- Thermo Stor 80 • Thermo Stor 100
- Mueller Fre Heater 105 Gal.
- Thermo Stor III, 120 Gal. • Mueller Fre Heater 50 Gal.
- 300-6000 Gal. Storage Tanks

Installation, Sales And Service

RAY SHENK

505 E. Woods Drive Lititz, PA 17543
Sales 717-626-1151 24 Hr. Service

Boumatic Double 4 Milking System, complete w/8 weigh jars, Kienzade washer, \$5000 takes all. 301/791-5343 8-5 M-F, Jim Martin.

Choreboy twin vacuum pump. Stump Acres, (717)792-3216.

Complete Milking System, will consider separating: 2" glass pipeline, new vacuum tank, 5 units, 635 gal. bulk tank, 43 loop free stalls - some never installed. Richard Kauffman 302/398-8058.

Dynavent bedding chopper, nice condition, \$800. (814)766-3415.

FOR SALE: Lots of used claws, shells, pulsators, takeoffs, meters, weigh-jars, bucket milkers, DV-300's, receiver groups, CIP's, etc. Many brands and models. "Free" UPS shipping or delivery. BUY-SELL-TRADE. 15 day Satisfaction Guarantee. E-ZEE MILKING EQUIPMENT, INC. "Specializing in used equipment". Gordonville, PA 17529. 717-768-7599.

Germania automatic take-offs, very thoroughly reconditioned, most models available, sold with one year parts warranty. Delivered and installed on your farm. Buy or lease! Midstate Dairy Systems, DeRuyter, NY, 13052. (315)852-9591.

Jamesway 500 gal. milk bulk tank, as in/out, A-1 cond., 814/674-8410.

Large exhaust louver w/ electric operator, brand new, \$100. Midstate Dairy Systems, DeRuyter, NY, 13052, (315)852-9591.

USED TANKS

- 600 Gal. Zero
 - 1000 Gal. Mueller OH
 - 1000 Gal. Mueller O
 - 1150 Gal. Zero
 - 1500 Gal. Mueller O
- Also:
5 HP Frick Belt

Hagerstown, MD
301-797-3921

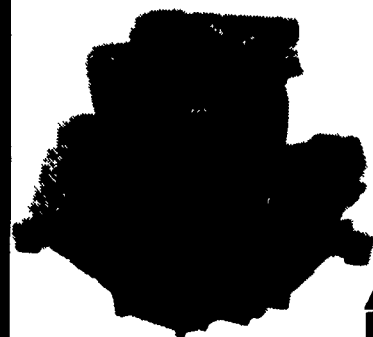
NEW SPUTNIK

- w/12" Lid opening
 - Large wheels
 - Heavy duty construction
 - 330 pound capacity
- Has passed U.S. Board of Health and PA. Dept. of Agriculture Inspection



The Conde Sputnik, including it's heavy duty undercarriage, is constructed entirely of quality 300 stainless steel. The Sputnik carries a one year guarantee against factory defects.

Daniel Beiler 78 South Maple Avenue, Leola, PA 17540

Today's Diesel at
Yesterday's Prices?
THAT'S RIGHT!

**KHD
DEUTZ**

Special Pricing on Selected 912 Models
THESE ARE NEW ENGINES

F3L912 - 34 HP @ 1500 RPM

42 HP @ 1800 RPM **\$3,800**

F4L912 & F6L912 Models Also Available

Call Us For All Your Diesel Needs

Diesel is Our Specialty -
Not A Sideline!

RUFUS BRUBAKER
REFRIGERATION & POWER

76 Pumping Station Rd.
Quarryville, PA 17566

717-786-1617

7 LIVESTOCK
EQUIPMENT

PAUL B. **Zimmerman**'s
INC.

- Square Bale Feeder
- Automatic Headgate, Gates & Fencing
- Loop & Freedom Stalls
- Water Bowl & Suspended Comfort Stalls
- Slant Bar Feed-Throw

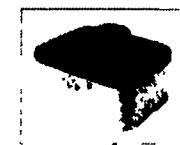
ENERGY FREE UNITS



Model CT 1



Model CT 2



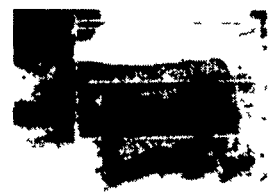
Model CT 4



CLEAN UNTESTED PIPES 1/2" to 6"

- Coated with baked on TGIC Polyester Urethane powder
- For safe and easy grooming, washing and clipping cattle
- Expanded metal floor stays cleaner and gives more traction
- Assembles and dis-assembles quick and easy
- Can easily be moved and loaded by one person

GROOMING CHUTE



DRY HILL FARM SHOP



RR #1, Box 426
Lykens, PA 17048-9744
Call For Details

(717) 365-3109 8:00-8:30 a.m.

NEW & USED SPUTNIKS
(and Sputnik parts!)

NOBLE ROAD MILKING EQUIP.

S.R. STOLTZFUS • 1523 KIRKWOOD PIKE • KIRKWOOD, PA 17536 • 717/529-1226

Dairy Equipment & Supplies • Sales, Service, & Repair
Westfalia • DeLaval • Top Line • Bou-Matic
Animal Health Supplies • Soaps & Detergents

SPECIAL PRICE: Sputnik socks-\$55/case,
(6 boxes per case), new vacuum pumps, carrying pails,
stainless steel tubs, and inflations.

WE INSTALL VACUUM SYSTEMS!

Call Us For A Good Selection
Of Milking Equipment -
Priced Right!

- 5 HP Boumatic Vacuum Pump, complete
- (16) Westfalia ACR/SS Detachers, Late Model, Excellent Condition

We Ship Parts Daily UPS

24 HOUR SERVICE

ON THE FARM ROUTE SERVICE

Fisher & Thompson Inc.

DAIRY & MILKING EQUIPMENT SALES & SERVICE

MAIN OFFICE
15 NEWPORT RD.
LEOLA, PA 17540
717-656-3307

MIFFLINBURG
SALES CENTER
RD 2 BOX 265
WABASH RD.
MIFFLINBURG, PA 17844
717-966-3900
RICK THOMPSON

NORTHERN
SERVICE CENTER
RD 1 BOX A-107
BELLEVILLE, PA 17004
717-667-6291
MERLE RESSLER

AMOS FISHER