

HUNTERS!!! CLINTON COUNTY

174 ACRES..... \$69,900
Adj. SPROUL STATE FOREST! Nice Stream! Owner Financing! Excellent Hunting Property! Close to Lake!

252 ACRES..... \$89,900
WILD AND SCENIC! Great for CAMP! Locked Gate Access! Won't Last Long! Possible Owner Financing!

27.571 ACRES.....\$24,900
Adj. State Forest! Excellent Hunting! Possible Owner Financing! Locked gate access from township road!

30ACRES.....\$39,900
Adj. SPROUL STATE FOREST! Nice View! Perc Tested! Ready for your recreational cabin! WHITE ROCK!

STERN REAL ESTATE

RR #1, Box 411
Lock Haven, PA 17745
800/759-6411

CENTRAL PENNSYLVANIA RURAL PROPERTIES

HUNTINGDON COUNTY

NEAR STONE VALLEY - Farmette on 57 acres. From Stone Valley Rec Area to Mooresville, 1 ~~hour~~ **SALE PENDING** 1.5 hours. Lovely setting, 4 bedroom home plus 2 bedroom apartment, central air. Horse barn, pond, pool, riding trails. Adjoins PSU land. \$185,000.

MILL CREEK AREA - 107+ acres of level river bottomland fronting on the Juniata River. \$165,000.

CENTRE COUNTY

COLYER AREA - 8.46 aced home site on Mountain Back Road. Beautiful View! Livestock permitted \$69,000.

STATE COLLEGE AREA - 170 acres of farmland and woods complete with stream and pond. Includes barns and outbuildings. Love horses? This is perfect for you! \$399,000.

STATE COLLEGE AREA - 25 acre farmette with remodeled 5 bedroom ranch type home with large bank barn with outbuildings, stream, and pond. Located 5 miles from State College. \$329,900.

STATE COLLEGE AREA - 35 acre farmette with 13 room home and 4 baths. Recently remodeled original 1830 farm home with 26x42 2-story addition. A large 60x120 bank type barn with stream and outbuildings is on the property. Located 5 miles from State College. Priced at \$569,000.

EGYPT HOLLOW - 123 acres with restored 1880's farmhouse with 1988 addition. 3 bedrooms, 1-1/2 baths, stream. ~~\$275,000~~ \$250,000

PORT MATILDA - Mint condition ranch home on 12.46 wooded acres. Pavilion, large pond, **SALE PENDING** emergency generating system for electric. \$124,900.

BELLEFONTE - 85± acres on Buffalo Run Road in process of being subdivided. Gently rolling land with million dollar views of the valley and countryside. \$465,000.

BELLEFONTE - Large contemporary ranch nestled in the trees on 12+ acres. The ultimate in privacy. \$299,900

COLYER AREA - This 47.5 acre property features a mix of open land and mostly wooded acreage. 3-4 bedroom home with 2 baths and fireplace. Outbuildings include 2-car garage, utility shed and operating dog kennel.

RUNVILLE - 13.76 acre farmette in the Bald Eagle School District. 2-story house, 3-car garage, large barn, detached summer kitchen. Possible owner financing. \$124,000

HALFMOON TOWNSHIP - 10.7 acres, approved for horses. Call today! \$96,300

PENNS VALLEY AREA - Home or camp site on 29 acres of wooded mountain land just east of Woodward fronting on Route 45. Near State Game lands. Priced at \$58,000.

247 ACRES - Bi-level home, 2 apartments, 42x72 pole building, 4 stall barn. All in very good condition. ~~\$599,000~~ Reduced to \$489,000

UNIONVILLE - 173 acres bordering State Game Lands. 3 miles northwest of Unionville. GREAT hunting area! \$100,000.

MARTHA FURNACE HOUSE - Bald Eagle Valley. Turn-Key Bed and Breakfast, large Brick mansion (1831), with attached apartment, 13 acres, pond and outbuilding. \$325,000. Real Estate only \$295,000.

HARRIS TOWNSHIP - Laurel Meadows located between Boalsburg and Poker Mills off Route #322. Building lots range from 2.4 to 13.74 acres, SCASD, public street, community sewage, well needed, restrictive covenants, horses permitted on select lots. Priced \$67,900 to \$141,100.

OTHER LAND PARCELS AVAILABLE.

CALL OR WRITE FOR A FREE LIST.

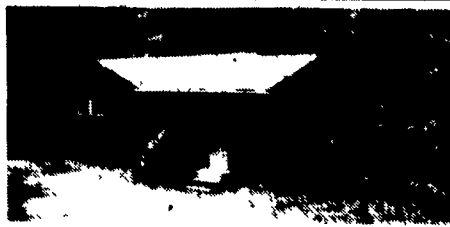
WANTED: Rural land and farms. Have buyers, will list.

Farm and Land Division
Fred Strouse (814) 234-4000
Mel Rockey (814) 466-6688
Terry Gingher (814) 466-2118
James Harpster (814) 238-2525



245 South Allen Street
State College, PA 16801
800-876-3395
(814) 234-4000
Fax 814-234-1332

The Professionals in Farm Real Estate Service



Close to lakes and hunting reserve, this camp on 56 acres serves the sports-minded with a complete package of woods, seasonal stream, and two-bedroom cabin. Easy access in the hills of Tioga County- your ideal recreation spot!



BEARD REAL ESTATE

403 East Main Street, Elkland, PA 16920
(814) 258-7117

Eric L. Beard, Broker

Mary C. Heitzenrater, Sales Assoc. - Kitty C. Brockway, Sales Assoc.

CENTRAL PENNSYLVANIA FARMS, FARMETTES, LAND AND CABINS

Our Farm and Land Division currently has many farms, farmettes, land parcels, and cabins available in central Pennsylvania. We would be happy to send you a free farm and farmette list and/or rural land and cabin list.

See the April 29th or May 27th
issues for a complete farm and
farmette inventory

Farm and Land Division

Fred Strouse (814) 364-1705
Mel Rockey (814) 466-6688
Terry Gingher (814) 364-1169
Jim Harpster (814) 238-2525



245 S. Allen St.,
State College, PA 16801
(814) 234-4000
1-800-876-3395

Nearly new 5 bdrm home, 2 full baths, 2 (1/2) baths, Lr, Dr, kit, family rm and office in basement w/outside entrance, shop, storage, small kennel w/outside entrance, indoor riding ring, 3 stall barn w/storage, 2 walk in horse sheds, all on 20 acres with fantastic views overlooking Sugarbranch Lake. Must see at only \$152,900 #1368

Great opportunity to own your own operating business. Land, bldg, and all equipment included in this restaurant. Located in beautiful Wellsboro, Pa. Dream on at only—\$148,000 #1364

80+ acres, great hunting area near State Forest Land, good views, open & wooded land, perc test complete, ready to build your dream home or cabin, asking \$64,000 #1361

79.69 acres open & wooded land with great views, appvd for on lot sewage, \$74,000 #1349



120 East Avenue
Wellsboro, PA 16901
717-724-3500

3 BEDROOM HOME ON 6.75 ACRES located just east of Gretna in a quiet country setting. Eight year old 3 bedroom home with 2 baths, large screened front porch and many other desirable features. Land is a combination of beautiful open land and timber land with a stream. \$55,900.

14 ACRES WITH NICE HOME This 1,600 sq ft. home is all on one level with 3 bedrooms and huge great room with fireplace. Land is mostly wooded with a stream and a large open area around the house with fruit trees and garden space. \$79,900.

CABIN IN THE WOODS on a nice 1.7 acre lot, this house being 1,550 sq ft is situated back in the woods for privacy. Only 5 years old you must see. Located at Leesville Lake with community ramp and boat dock. Price \$69,500. Ask for Elizabeth.

Aaron W. Johnson
Auction & Realty, Inc.
Rt. 40 West, P.O. Box 0808
Gretna, Virginia 24587
(804) 656-3150

CENTRAL VIRGINIA: Farms and land available from 5 to 500 acres, reasonable prices, very low taxes, farmer friendly communities, agricultural economy, free catalog

State Wide Realty Co.

Farmville, Virginia

804-392-6163

Farms & Rural Properties

Low Prices, Low Taxes, Free Catalog

ONE OF LANCASTER CO. FINEST FARMS

- 125 acre dairy farm - 95 acres tillable
- 62 stalls
- Large brick home in excellent condition
- Harvester silos, etc.
- Tenant house
- Willow Street area

91 ACRES OPEN LAND WITH BARN AND MOBILE

- 75 acres tillable
- Stream; great setting
- Close to Lancaster
- Great farm or homesite

106 ACRE MODERN DAIRY FARM

- 68 tie stalls
- Feed and manure storage
- Beautiful restored brick home
- Elizabethtown - Mt. Joy area

46 ACRE - EAST DRUMORE TOWNSHIP

- 3 bedroom house; barn
- Many possibilities

OUR PURPOSE IS TO HELP YOU MAKE GOOD DECISIONS



SLAUGH WAGNER COMPANY, INC.
(717) 786-1300

CENTRAL VIRGINIA

75 acre farm, 30 acres open, 5 bedroom 2 bath home, 44x90 veal barn, old dairy barn, silo, good paved road frontage, only 6 miles from Farmville. Only \$190,000.00

86 acres, approximately 8 acres open. Attractive ranch home with approximately 2700 sq. ft. finished with large deck overlooking a 2 acre lake. Complete privacy. Convenient to town. Selling for only \$199,500.00

Nice ranch home on 10 acres. Full basement, carport and storage building. Only \$127,500.00

50 acres with nice frontage on a 50,000 acre reservoir. Great fishing and boating. \$225,000.00

201.36 acres of cutover land. Good hunting. Close to a large lake. Only \$300.00 per acre.

Contact "Mike" or "Kip" Lafoon
Coldwell Banker Lafoon Realty, Inc.
720 Oak Street, Farmville, VA 23901
1-800-767-6191 or 804-392-6191
after 5, Mike 804-392-4375,
Kip 804-392-3002



255 Acre River Bottom Farm

Located in Lycoming County, with 221 tillable & 33 wooded acres 2 Story home, bank barn, outbuildings. Possibilities are endless Crop, Dairy or Beef/Hog Farming Call for more details on this one!

Bordering State Land

Camp on 3.67 acres, bordering state lands, hunting and fishing and fishing are abundant, priced affordably at \$24,000. It's an inexpensive getaway

Campground for Sale!

Located in the northern area of the Pine Creek Valley, this campground offers a year round residence, new utilities and bathhouse within the last 4 years. 100% occupancy, priced to sell at \$180,000

Fabulous Property

Located near a rails to trails site, on a picturesque lot overlooking scenic Pine Creek. This outstanding property features a unique open design, with vaulted ceilings in the living & dining rooms. This home is deceptively large with over 3,000 sq. ft. of living area.

Fisherman's Heaven

128 acres and 200 feet of frontage on Big Pine Creek, this 2 bedroom cottage offers, all the modern conveniences of home. Situated in the heart of the PA Grand Canyon, and some of the finest fishing in PA.

3034 Acres

Located in the heart of the Sprout State Forest This property extends from the river and across two mountain tops. Mountain stone cabin, gas well, and mineral rights. Your choice to own one of the largest remaining land tracts in PA.

GAP Village

\$275,000 Buys you an historic completely restored village. Paint Mill banquet & social hall, the cap country store, and a 2 unit home, on 4 acres along RT. 44 The opportunities are unlimited for this unique one of a kind property.



Real Estate • Auctioneers •
Appraisers • Property Management

252 Allegheny Street • Jersey Shore, PA 17740
(717) 398-7316

Working with and assisting Farmers in Lycoming, Clinton, Centre and Tioga County since 1980 - Brokerage - Auction - Farm Appraisals