



**1989 Freightliner Big Cam 400 Cummins,**  
20,000 Miles on out of Frame Major, 13 spd,  
Jake, Air ride with 26 ft Body \$35,000.  
717-658-4466



**N12 Volvo**  
350 Engine, 8 Speed, 18F 44R,  
5000 Gallon, Posi-Lock Rears, A/C  
(717) 733-7226

Tag Along Trailer, Birmingham, 1980, 20-ton, 20' bed, tandem, \$3800. 717/354-3105.

Wetline for Fuller transmission, complete, like new, \$875; Rear for GMC 6000, 2 speed, 73-79, complete good shape, \$450. 610-356-5842.

LANCASTER FARMING, Saturday, June 24, 1985-C37

International 4200 road tractor with 40' Fruehauf trailer, 318 engine, hauled hay, very good condition. Gerald, (717)253-3562.

MACK 1986, cab over, MS200, excellent, \$6,000/OBO. 410-833-9091

For Sale: 1977 Int. tri-axle truck, 200 Cummins, 18-44 axle, needs engine work, \$2800. 717/463-2572, 717/463-3011.

GMC 1989, 1 ton, 4x4, \$4,000/OBO. 410-833-9091

# LEFEVER BROS. CHEVROLET

## CHEVY TRUCKS

## Geo.

YOUR DIRECT LINE TO GENUINE GM PARTS

**(800) 533-3837**

When you call the number listed above, you'll reach our wholesale parts specialists, who can help you keep your GM repair work moving quickly.

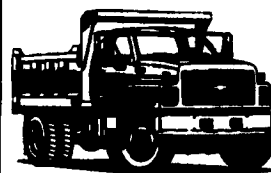
Ask about:

- Specializing in GM Medium Duty Trucks, Current and Obsolete.
- \$500,000 Parts Inventory.
- Parts Locator for Those Hard to Find Items.
- We Ship Anywhere, Local Delivery Available.
- Experienced, Knowledgeable Personnel.

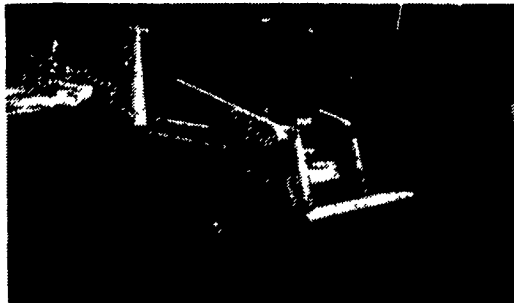
Mon., Tues., Thurs., Fri.  
7:30 a.m.-4:30 p.m.  
Weds. 7:30 a.m.-8:30 p.m.  
Major Credit Cards Accepted

**(717) 432-9697**  
Quality Dealer Since 1921  
406 U.S. Rt. 15, Dillsburg, PA 17019

**GM Goodwrench Service**



**Kodiak Chevy Trucks**  
**CAT DIESEL POWER**



**1990 Case 1840 Skid-Loader, Excellent Condition \$11,500 obo.**



**1990 Ford F-450, 7.3 Diesel, 5 speed, 10' Dump, 8 ton hoist, excellent condition, inspected, \$15,500 obo.**

**Fireside Tom Landscape Supply, Inc.**  
**410-893-3623**



**1974 International 175 B track loader 4 in 1 bucket, new engine, under carriage 95%, new paint, \$15,000 obo.**



**1990 Michigan L-70 Rubber Tire Loader 3 yd. bucket, ROPS cab, A/C, heat, excellent condition \$50,000 obo**

Nicest Pre Owned Trucks Anywhere!

**RTE. 422 WEST LEBANON, PA**

(Across From Lebanon Valley Mall)



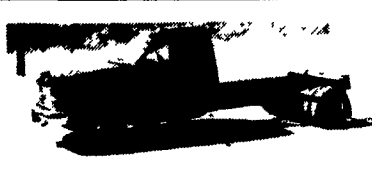
**PHONE 717-274-2000**

Business Hours  
Mon-Thurs 9-9  
Fri & Sat 9-4

### SPECIALIZING IN HEAVY DUTY TRUCKS



**ALUMINUM BOX**  
91 CHEVY H.D. 3500  
18000 GVW, 454 AT, only 43,000 Miles, 14 1/2' Fl. Box, Roll Up Rear Door, Slide Out Ramp Will Sell As Chassis



**4x4 Chassis**  
94 Chevy 3500 Silverado Long Wheel Base, 84" C.A. 454 I.I. 5 Sp O/D, A/C, Only 19,000 Miles, Factory Warranty A Real Powerhouse, Very Rare



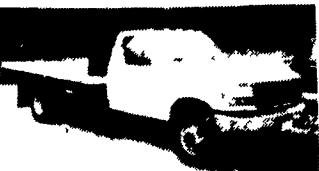
**READY TO WORK**  
88 CHEVY 3/4 TON 4 Wheel Drive, 350 I.I., Auto., Tow Pkg., Dark Finish



**DIESEL CARGO VAN**  
91 Ford E-350 Extended Length, 7.3 Diesel, AT, A/C, 50,000 Miles, Real Clean



**\$7,900**  
90 FORD AEROSTAR CARGO VAN Very clean, 50,000 Miles, V8, AT, A/C, Remaining Ford Factory Warranty



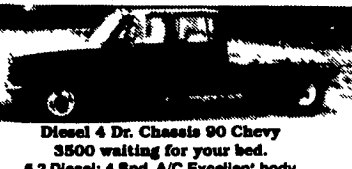
**STAKE BODY DUMP**  
92 FORD SUPER DUTY Big 18,000 GVW 480, Auto., Only 18,000 Miles, Nice Truck



**4x4 DIESEL SUPER CAB**  
94 CHEVY 3500 3/4 Ton Silverado, 6.8 Turbo Diesel, Auto, A/C, All Options, Tow Pkg., Drives & Rides Real Nice



**4X4 DUMP TRUCKS**  
91 Ford F350 Diesel Power 91 Chevy 3800 380 4 Sp., 37,000K



**Diesel 4 Dr. Chassis 90 Chevy 3500 waiting for your bed.**  
6.2 Diesel; 4 Spd. A/C Exceller' body & Paint Dual tanks. 30,000 original miles \$13,900



**4x4 Diesel 93 Ford F-250 XLT Heavy Duty 3/4 ton 8600 GVW. Big 7.3 Diesel at A/C Dual Tanks. Limited slip 4:10 gears. Only \$18,900**



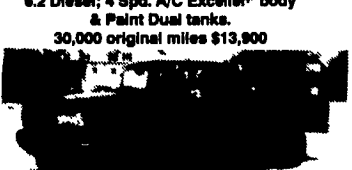
**4x4 Flatbed Dump 89 Ford F-350 A Rare Find Only 65,500 Miles, 460 I.I., 5 spd., Dual Tanks, Tow Pkg., 8 Ft. Body**



**ROOM FOR THE FAMILY**  
88 Chevy Super Cab 4 Wheel Drive, 380 I.I., Auto., A/C, Tow Pkg., 62,000 Miles, A Clean Truck



**4x4 DIESEL SUPER CAB**  
92 Ford F250 Custom Nothing Fancy. Just A Good Running Truck, 7.3 Diesel, AT, 4:10 Gears, Tow Pkg. \$18,900



**Powerstroke 4x4**  
94 Ford F-250 Super Cab XLT You've Heard About This Amazing Engine. Now Come Drive It, 22,000 Miles



**CUMMINS TURBO DIESEL**  
4x4 93 DODGE CLUB CAB DUALLY Strong Truck Cummins Diesel, Auto, A/C, Remainder New Truck Warranty, 21,000 Miles Very Clean



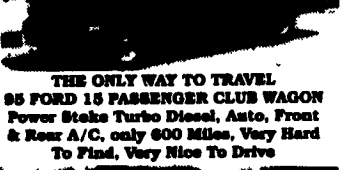
**ALUMINUM BOX FOR SALE**  
14 Ft. Body Roll Up Rear Door Slide Out Ramp



**HEAVY DUTY 94 CHEVY H.D. 3500 Chassis**  
Big 18,000 GVW, 6.8 Turbo Diesel, Auto, 181 W.B., 84" C.A. 100,000 Mile Engine Warranty From Chevy



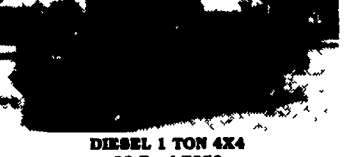
**LOAD IT UP**  
88 Ford Cube Van 14 Ft. Box, Roll Up Rear Door, Slide Out Ramp, V8, Auto, A/C Excellent Body



**THE ONLY WAY TO TRAVEL**  
95 FORD 15 PASSENGER CLUB WAGON Power Stroke Turbo Diesel, Auto, Front & Rear A/C, only 600 Miles, Very Hard To Find, Very Nice To Drive



**Powerstroke 4x4**  
94 Ford F-250 XLT Beautiful, Like New, Only 4,800 Miles, 5 Spd., A/C, H.D., 8600 GVW, You Gotta See It



**DIESEL 1 TON 4X4**  
93 Ford F350 Beautiful, Perfect, Awesome, Truck, 25,000 Miles, 7.3 Diesel, AT, A/C, 4:10 Gears Custom Wheels