

EDWARD MILLER AUCTION SERVICE

A + RENTAL

2 DAY LIQUIDATION SALE

SATURDAY, JUNE 24, 8:00 AM

MONDAY, JULY 10, 9:00 AM

(TO BE HELD ON SITE (OWNER RETIRING))
 3070 CARLISLE ROAD
 YORK, PA

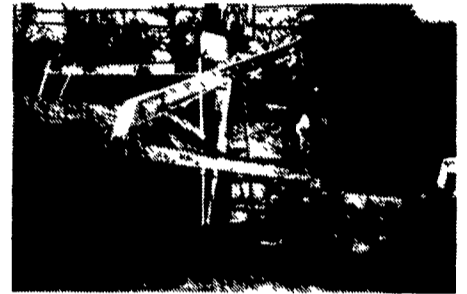
DIRECTIONS: Off I-83 take Exit 9-E Rt. 30 West to a R/Turn at the Carlisle Exit or Rt. 74 North. Follow to sale on left (signs)

PREVIEW: Friday, June 23 & July 7 12:00 Noon Till 7:00 P.M.

Phone — (717) 840-4060

Note — Due to Owner Retiring this is a Total Liquidation of Fine Line of Equipment, Tools, Etc. on June 24th, and Party Goods, Office Equipment, Etc. on July 10th.

TERMS: Cash, Travelers Checks, Local PA Checks w/Proper ID, Out Of State Checks Must Be Accompanied By Current Letter of Credit Guarantee, Unless Approved Prior to Sale, Right Reserved To Hold Merchandise Till Checks Clear.



SATURDAY, JUNE 24 • 8:00 A.M.

Stow R-2000 Econo Black Top Roller 8 HP, Terramite 75L 20 HP Mini Backhoe 587 Hrs., 8'4" Digging Depth, Toyota 7 SDK Front End Skidster Loader w/Extra Bucket and Backhoe Attachment, 9 HP 1475 Hrs., Little John 11 HP Elec. Start Stand on Skidster Loader w/Bucket, Sweeper, and Auger Attachment Multi-PU Bits, 1 BTL-Jay XLB 12000R 2-Man Portable Trailered 2 Man Boom Battery Operated, 1984 Ford F-350 Pick Up - 351 81K, 12'x7' Enclosed Fifth Wheel Dual Axle Trailer, 2 Badger 8 HP Trailered Backhoes w/Extra Bucket, 2 Promark Model 210 16 HP Brush Chippers. Trailered, 8'x4' Light Up Arrow Electric, 1 Strap Down Car Dolly Trailer, 5 HP Vertical & Horz. Log Splitter, 8 HP Lumber Jay Vert./Horz. Log Splitter, 20'x12' Dome Covered Portable Shelter, 2 Grimmers Schmidt #125 Trailered Elec. Start Air Compressors, Smith #100 Trailered Air comp., Ingersoll-Rand #100 Trailered Air Comp., Emglo-Elec. Air comp., 2 Emglo 8 HP Gas Air Comp., Emglo 3 HP Stationary Air Comp., Emglo 11 HP Towable Air comp., 4 60 Lbs. and 1 80 Lbs. Air Jack Hammers and Assortment of Points, 3 Bosch Elec. Jack Hammers, 10'x6-1/2' Ditch Witch Trencher Trailer, 11'x6' Beck Flat Bed Trailer Dual Axle w/Ramps, Snowco 11'x6' Flat Bed Trailer w/ramps, 2 4'x3' Equipment Trailers, Blackwell 4'x5'x22" Deep Pump Trailer, 5 HP Ground Hog One Man Post Hole Digger, 1 3HP Honda One Man Post Hole Digger, 1 I.C. 5 HP 2-Man Post Hole Digger, 12'x20' BIL-JAX Alum Portable Building, Genie 24' High Super Lift, Genie - n-Matic 800 Lbs. Lift, BTL-JAX Battery operated Stand On Lift 400 Lbs. Cap.; **MASONS:** 17 Sets 4 1/2'x7', 3 Sets 3'x7', 4 Sets 6'x28", Masons Scaffolding, 1 Set Baker Scaffolding, Stow CM9 9' Cubic 8 HP Gas Cement Mixer, 8 HP Gas 6 Cubic' Cement Mixer, 6 Scaffal Planks, Scaffal Wheels Adjusters, Etc., Elec. Cement Mixer 4 36" Gas Power Trowelers or 2 Stow 2 Muller, Eversharp Brick Saw & Stand, 2 EDCO 10 HP Walk Behind Concrete Saws, Misc. Cutting Blades, Diamond Blades, Mud pans, Bull Float, 2 Stow Concrete Vibrators, Hydraulic Brick Splitter, 5HP Power Wheel Barrel Buggy, 1 30CC Gas Powered Wheel Barrel; **LAWN & GARDEN:** Craftsmen 3 Pt. Hook Rear 5 HP Tiller, 8 HP Rear Troy Bilt Tiller, 7 HP Honda Rear Tiller, 5 HP MTD Rear Tiller, 8 HP Craftsman Rear Tiller, 5 HP Troy B Chipper Vac, 3 HP Little Wonder Pro-Edger, 3 HP John Deere Edger, 2 Craftsman 5 HP Front Tillers, 5 HP Merry Front Tiller, 8 HP Giant Vac, 2 Giant Vac Power Rakes, 2 Blue Bird Thatcher & Spreader Combos, Gorilla 3 HP Gas Aerator, Rayan Power Roller & Aerator Combo, 4' Tow Aerator, Walk Behind Aerators, Sarlo 5HP Commercial lawn Mower, Sarlo 5 HP Self Prop. lawn mower, 2 Murry 5HP Self-Prop. Mower, Tow & Walk Behind Spreaders, 6' & 4' Stone Rake; **CARPET:** 2 Roberts Power Carpet Stretchers, 2 Knee Stretchers, 1 Carpet Cutter, Linoleum Roller, 2 Steamlite Carpet Cleaning Outfits; **OTHERS:** 8HP Kwik Trencher, Clark Little Lazzar Power Washer, Propane cylinders - 10 & 20 lbs, 4 40 Lbs, 1 100 Lbs, Richards XL 1000 Lbs. Cap. Platform Scale, 2 Nonflammable Cabs, E-Z 21 Foot Belt Conveyor, 6 Alum. Ext. ladder 24', 20', 12', 36', 28', Wheelbarrows, Yard Rollers, Georgia Buggy, Aeroul Hot Tar Kettle, Elec. Ladder Hoist, 10 Gal. Wheel Pump Tank Sprayer, Industrial Garage Door Opener, 3 Portable Cranes, 5 Tow Bars, Engine Stands, Transmission Jack, Floor Jacks, Simplex Jacks, Hand Carts, Piano Dollies, Stepladders, Compass, Metal Detector, BTL-JAY Dry Wall Lift, 3.5 HP Wacker Vibrator Compactor, North E. Gas Power Washer, Ladder Jacks, Roof Jacks, Tampa Cure 36" Port Exhaust Fan, North E. elec. Steam Jenny, Many Dozen Furniture Pads, 7 Submersible Pumps, Stow 16 HP 4" Pump, Stow 5 HP 3" Pump, 3 5HP, 2" Pumps, 2 Stow 8 HP 3" Pumps, Honda EM 4000 W Generator, 2 Honda EM8 2200 W Generator, Coleman 5 HP 500 W Generator, Many Propane & Kero Jet Heaters, 2 Elec Carpet & Tile Strippers, 6 36" Pedal Stool Floor Fans, 4 Gas Jumping Jack Campers, 4 Barricade w/Flashers, Miller Portable Gas Arc Welder, 6 5HP Shingle Stripper, Accedalyne Cutting Outfit, Sand Blaster, Sellsaw Metal Band Saw, 30 Ton Overhead Press, DIP Stick #160 MIG & Stick Alum/DC Reverse Welder Will Weld Alum., Solar 480 6/12 Volt B/Charger Starter, Trench Surfing Outfit & Jack w/12 Braces, Detecto Model 4570 Scales, Pumper Parts Washer, 5 HP Briggs Engine (New), 8 HP IC Engine, 2 10' Alum Metal Brakes, Dumpy Level Transit, Solo & Troy Bilt Tank Sprayers, 6 4'x4" Pump Jacks, Many Wet & Dry Vacs, 2 America 9HP Pressure Washers, 8'x7' Metal Garage Door, 12 8' Section of Baseboard Heat Various Cases, Many Many Others Not Mentioned. **HAND TOOLS:** Ridget Tripod Pipe Vise, Benders, Pipe Cutter, Threaders, Wrenches, All Ridget, 8 Wheel Pullers, Elec. Staple Gun, 2 Duromatic Subwood Flooring Nailers, Air Roofing Nailer & Other Air Nailers, Stehl & Wacker Demolition Saws, elec. Sewer Snakes, 17", 15", 13" Floor Polishers, Remington Stud Gun 22 Cal. & Ammo, 2 Baldore Elec. Floor Sanders, 2 Bosch Hammer Drills & Assort. Bosch 1 HP Nubber, Makita 5" Hand Held Planer, B&D Hand-Held Band Saw, Craftsmen 1/2 HP Router, Heat Guns, Belt Sanders, 16" Makita Power Miter, Portable Flood & Spot Lights, Post Driver, Stehl Chain Saw Sharpener, Chain Binders, Tool Boxes, Spray Guns, Cable Making Tools, 2 Time Clocks, 2 Makita Vibrator Sanders, Bench Grinder, Splitting Mauls, CM 1 Ton Chain Hoist, Post Hole & Digging Bar, Wheel Pullers, Clutch Lining Tools, 2 Cylinder Hones, Balls of String & Cord.

MONDAY, JULY 10, 9:00 AM

CATERER/ VENDER EQUIP: Big John 5'x2-1/2' Gas Grill Trailered, Charcoal Grill w/Gate & Rotisserie & Sides, 2' & 3' Gas Griddles, 2 Stainless Steel Sinks, Star Popcorn Maker, Gold Medal Snow Cone Machine, Star Roller 18 Cap Hot Dog Maker, Star Rotary 18 Cap Hot Dog Maker w/Bun Warmer, Blakeslee Meat Slicer, Wisco Single Elec. Pizza Maker, Star Dual Overhead Heat Lamp, Gold Medal Butter Disp., Big John Utility Stone 2 100 Cup & 2 55 Cup Coffee Makers, 2 3-Gal., 3 5-Gal., 2 7-Gal., 1 2-Gal. Approx. Charriup Fountains, 20 3'x3' Sections of Portable Dance Floor, Hammer Bell Trailer Cart, 3 Hurricane Blowers w/3 30'-40' High Balloons, Trailered Party Dunk Tank, 3 Super Coolers, Air Void Hot/Cold Thermal Cont., Beer Cage Beer Dispenser, Big Bash Pot Warmer, Volleyball Set, Test Your Strength Party Bell, 2 Pc. 4'x8' Staging Platform Party Carts Various Sizes & Styles, Portable PA System, Portable Speaking Podium & Amp, 5 Gal. Steamer, 80 & 40 Qt. Alum. Pots, Many Configuration of Candle Operas, 5 5 Gal. Hot & Cold Thermos Dispenser 3 Round 2 Square, Many Table Cloths & Paper Goods, Party Goods, Linens, Peach, White, Pink, Teal, Blue, Gold, Help Yourself Salad Bar. **TENTS & CANOPIES:** 2 10'x10' Canopy, 1 20'x20' Canopy, 7 12'x12' Dining Fleas, 1 15'x15' Do It Yourself Canopies, 1 20'x20' Do It Yourself Canopies, 1 20'x20' Do it Yourself, 2 10'x10' Easy Ups, 3 15'x15' Stake Down, 2 20'x20' Stake Down, Frame Canopies, 4 20'x20', 1 20'x30', 2 20'x40', 1 30'x30', 1 30'x40', 1 30'x50' w/possible add on, 10 6' banquet table; 29 8' banquet 25 30" square card tables, 8 36" & 22 52" Round Table All w/Folding Legs, 300 Plastic Samsonite Folding Chairs, 220 White Wooden Folding Chairs, 31 Four Seat Theater Style Chairs; **OFFICE & COPIERS:** Cannon Color Graphics Copier w/Slide Projector Attachment, Richo FT 4060 Copier, Panasonic FP-1520 Copier and Others, 7 5-Drawer, 1 4-Drawer File Cabinet, 3 Micro Fiche Machines, Overhead Projector, MTSO Office Dividing Walls, 13 Metal Stackable Bookshelves, 2 Platform Dollies, 1 On Fax 6 - 39 Fax Mach., Speakers, Adding Machines, Metal Desk, 2886 IBM Computer Amplifiers, VCR & Camcorder (As Is), and Others Not Mentioned. **PARTY GOODS & OTHERS:** 200+ Costumes ranging from Santa Claus - Playboy Bunny, Formal Wear, Foreign, and Children Costumes, Highchair, 8 Folding Beds, Portable Wedding Arches, Stainless Steel Cribs, Pipe & Drape System, Mylar Balloon Supply, Shrink Wrap Sealer, Brass Raffle Cage, Wheel Of Fortune Game, Chuck-A-Luck Game, Craps Shoot Game, Black Jack Dealer Shoes, Roulette Wheel, Garden Bench, Wishing Wells, China & Dish Inventory Utensil Inventory, Knelling Benches, Silver Trays, Many & Many Other Items Not Mentioned.

EDWARD MILLER AUCTIONS
 AU-2331
 (717) 840-4060