

**Belleville Livestock**

BELLEVILLE, PA  
JUNE 14, 1995

CATTLE 240.. PDA ... Supply included  
165 Dairy cows .  
COWS: Breaking Utility and Commercial 39.50-43.10, Cutter and Boning Utility 39.00-42.25, one 45.00, Canner and Low Cutter 34.50-38.50. Shells down to 27.00.  
BULLS: few Yield Grade No. 1 995/1600 lbs. 44.85-45.50.  
FEEDER CATTLE: HEIFERS: few Medium Frame No. 1 630/775 lbs. 45.50-53.00.  
CALVES 85...VEALERS: few Standard and Good 75/95 lbs. 39.00-48.00.  
FARM CALVES: No. 1 Holstein bulls 85/120 lbs. 85.00-105.00, couple 120.00,

No. 2 80/115 lbs. 45.00-75.00; few No. 1 Holstein heifers 90/110 lbs. 167.50-192.50.  
HOGS 58...BARROWS AND GILTS: US 1-2 225/245 lbs. 39.10-40.10, lot US 1-3 255 lbs. 38.25.  
SOWS: few US 1-3 350/550 lbs. 21.75-26.75.  
BOARS: few 18.50-19.75.  
FEEDER PIGS 240...US 1-3 25/35 lbs. 13.50-18.50, 35/55 lbs. 17.00-27.00, lot 125 lbs. 35.00. --- per head.  
SHEEP 70...SLAUGHTER LAMBS: Choice 90/110 lbs. 72.00-87.00, Good and Choice 35/85 lbs. 82.00-100.00, couple 133.00.  
SLAUGHTER SHEEP: 24.00-36.00.  
GOATS 10...Few Large 42.00-80.00, few Large Kids 33.00-59.00. --- per head.  
DAIRY COWS...\$500.00-\$1110.00. --- per head.

**Dewart Livestock**

DEWART, PA  
JUNE 12, 1995

CATTLE 98.. PDA ...  
STEERS: couple Choice 61.75 & 63.50, few Select 58.50-59.00.  
HEIFERS: couple Choice 60.75 & 65.00, few Select 51.00-61.50.  
COWS: Breaking Utility and Commercial 43.00-43.75, Cutter and Boning Utility 38.75-42.75, one 43.75, Canner and Low Cutter 34.50-38.00. Shells down to 26.00.  
BULLS: two Yield Grade No. 2 1240 & 1500 lbs. 42.50 & 43.75.  
FEEDER CATTLE: STEERS: few Large Frame No. 2 370/585 lbs. 46.00-57.50, few Medium Frame No. 1 800/1075 lbs. 46.75-49.00.  
CALVES 146...VEALERS: Standard and Good 75/100 lbs. 40.00-48.00.  
FARM CALVES: No. 1 Holstein bulls 85/125 lbs. 80.00-112.50, few 117.50, No.

2 80/120 lbs. 50.00-85.00; No. 1 Holstein heifers 85/120 lbs. 125.00-185.00. Beef cross bulls and heifers 70/100 lbs. 70.00-97.50.  
HOGS 77...BARROWS AND GILTS: one lot US 1-2 240 lbs. 39.75, US 1-3 225/245 lbs. 35.75-38.75, few lots US 2-3 230/275 lbs. 32.75-33.75, few lots US 1-3 185/200 lbs. 25.00-27.75.  
SOWS: few US 1-3 300/575 lbs. 23.00-29.50.  
BOARS: few 23.50-24.50.  
FEEDER PIGS 36...Few lots US 1-3 25/35 lbs. 31.00. --- per head.  
SHEEP 11...SLAUGHTER LAMBS: few Choice 50/120 lbs. 65.00-100.00.  
SLAUGHTER SHEEP: few 10.00-23.00.  
GOATS 6...Few Medium & Large 25.00-45.00. --- per head.

400-850 LBS. 63.00-76.00; HOLSTEINS/DAIRY TYPES 47.00-66.00; FEEDER BULLS 400-550 LBS. 68.00-71.00; HOLSTEINS/DAIRY TYPES 450-700 LBS. 55.00-59.00; FEEDER HEIFERS 400-700 LBS. 53.00-68.00; HOLSTEINS/DAIRY TYPES 42.00-57.00.  
CALVES: VEALERS 40-130 LBS. 40.00-80.00; CALVES RETURNING TO FARM, HOLSTEIN BULLS #1 95-125 LBS. 110.00-127.50, #2 80-130 LBS. 75.00-107.50; HOLSTEIN HEIFERS #1 80-130 LBS. 135.00-175.00.  
SWINE: HOGS US#1-3 220-270 LBS. 39.50-40.50, 190-210 LBS. 40.00-44.00, 275-290 LBS. 37.75-39.00; US#2-3 ALL WEIGHTS 34.50-38.00.  
SOWS: 300-450 LBS. 22.00-32.00; 460-600 LBS. 25.75-28.75; THIN/WEAK/ROUGH 18.00-21.00.  
BOARS: ALL WEIGHTS 18.00-22.50.  
FEEDER PIGS: BY THE HEAD, 15-25 LBS. 23.00-25.00; 30-55 LBS. 26.00-36.00.  
GOATS: BY THE HEAD, MEDIUM TO LARGE NANNIES 65.00-75.00; MEDIUM BILLIES 70.00-85.00, FLESHY KIDS 45.00-60.00, SMALL KIDS 16.00-42.50.  
LAMBS: ACTIVE! GOOD AND CHOICE 35-45 LBS. 107.50-134.00; 50-100 LBS. 77.00-92.50.  
SHEEP: ALL WEIGHTS, 19.00-35.00.  
NEXT STATE GRADED FEEDER PIG SALE FRIDAY, JUNE 23, 1:30 P.M. GRADING 7-11 A.M.  
NEXT SPECIAL FED CATTLE SALE TUES., JULY 11.  
NEXT FEEDER CATTLE SALE TUES., JULY 18, SALE TIME APPROX. 7:15.  
ESTIMATED DIRECT HOG BASE PRICE AT THE PLANT FOR WED., JUNE 14 IS 41.50.  
SALE EVERY TUES. FOR LIVESTOCK, 7 P.M. SALE TIME, RECEIVING 8:30 A.M. ALSO EVERY TUES. WE HAVE SALE FOR RABBITS, POULTRY AND EGGS 5:55 P.M. SALE TIME, RECEIVING 4 P.M.

**THE Scoular COMPANY**

**BUYING AND SELLING  
SOFT RED WHEAT  
WHITE WHEAT  
AND CORN**

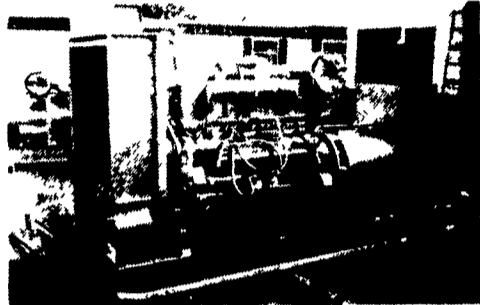
Picked Up and Delivered Bids Available  
Prices Quoted for Spot or Future Delivery

**PROMPT PAYMENT**

**ASK FOR  
BILL KRUEGER  
(800) 487-1474**

**WE WANT TO BUY  
YOUR GRAIN**

**MARTIN MACHINERY**



**GENERATORS**

Sales ★ Service ★ Rentals  
★ Complete Generator Systems  
★ PTO ★ Portables ★ 2-1600 KW  
"We Service It If You Have It  
And Sell It If You Need It"

34 W. Mohler Church Rd.  
Ephrata, PA 17522

Tel: 717-738-0300  
Fax: 717-738-4329

**EMHERR**

**PLAN NOW FOR YOUR DRYING SYSTEM  
FOR THIS COMING SEASON**

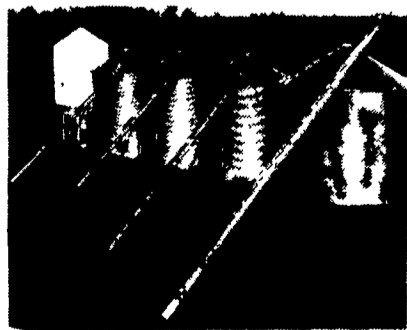
*EM Herr - Serving The Industry Since 1955.*



EM Herr  
Is The  
Place!

- Weight-Tronix Feed Mill
- Bucket Elevators
- Feed Bins
- Air Drying Systems
- Transport Augers
- Utility Augers
- Stirring Systems
- Wet Tanks
- Grain Dryers
- Grain Bins

**WESTFIELD GRAIN AUGERS**



**180 DAYS SAME AS CASH**

For Qualified Buyers

**QUALITY PRODUCT AT AN AFFORDABLE PRICE!**

Number	Size	Sale
789450	8"x51'	\$2,195
789451	8"x56'	\$2,595
789452	8"x61'	\$2,695

(Assembly Available)

★ Full Line Parts Dept. ★ Sell, Service & Install ★  
Rt. 272 South - 14 Herrville Rd.  
Willow Street, PA 17584  
Ph: 717-464-3321 or  
Toll Free 800-732-0053

Store Hours: Mon.-Sat. 7:30 AM to 8:00 PM

**EMHERR EQUIPMENT, INC.**

Serving The Industry For Over 35 Years

**CRAIG'S HOG BUYING STATIONS**

*Four Locations To Serve You!*

Receiving Butcher Hogs:



SHIPPENSBURG  
Wed. & Sat.  
(717) 532-5224

All Stations Open 7:30 am to 11:00 am



GREENCASTLE  
Mon., Wed., Sat.  
(717) 597-2315



MARTINSBURG  
Saturday  
(814) 793-2311

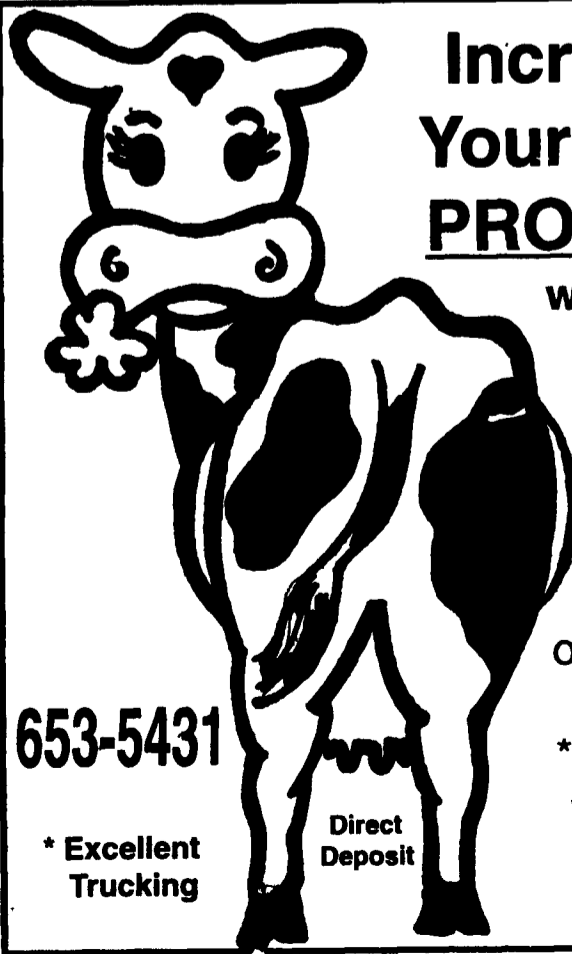
We Still Buy Hogs The "Old Fashioned Way"



THOMASVILLE  
Wednesday  
(717) 792-2248

- No Advance Scheduling
- No Consignment Too Small Or Too Large
- Weighed & Paid For Upon Arrival
- Competitive Prices Paid For Light Weight Hogs, Sows & Boars

For More Information Contact Jeff Craig At (717) 532-5224



**Increase Your Milk PROFITS**

with the  
**Mount Joy Coop**

Excellent overall price

**653-5431**

★ Excellent Trucking

Direct Deposit

★ Over 60 years of service