

Kutztown Produce Auction

Fleetwood, PA
Auction days Mon., Tues., Thurs. Fri., 9:30 a.m.
Sat., 9 a.m.
June 6, 9, 10, 12, 13, 15
Hay and Straw at 9:00 a.m. followed by produce

Report Supplied by Auction
APRICOTS: 2.00 % BU.
ASPARAGUS: 1.70-1.90 LB.
BANANAS: 8.00 BOXED.
BLUEBERRIES: 8.00 FLAT.
CANTALOPES: 1.60 BACH.
CHERRIES: 14.00-15.50 8 QT. BOX.
CUCUMBERS: 2.50-10.00 % BU.
EGGS: 25-.60 DOZ.
LETTUCE: HEAD .60-.75 HEAD, 4.50 BOX.
MANGO: 1.50-2.00 EA.
ONIONS: 4.00-9.00 50 LBS., SPRING 10-30 BUNCH.
PEAS: SUGAR SNAP 3.00-7.00 % BU., SUGAR 3.00-11.00 % BU., 4.00-5.50 8 QT. FLAT, 3.00-11.00 % BU., HULL 5.00-7.50 % BU.
POTATOES: RED 9.00 50 BLS. RED BEETS: .25-.60 BUNCH.
RHUBARB: 6.00-14.00 BOX.
STRAWBERRIES: 4.00-18.00 8 QT. FLAT.
TOMATOES: GREENHOUSE 10.50-19.00 BOXED; HYDROPONIC 1.00-2.10 LB., BOX 7.50 12.00; SOIL GROWN 11.00-16.00 BOX.
WATERMELON: 1.40-3.50 EACH.
FLOWERS: ALL EACH, GERANIUMS .25-.90; MARTHA WASHINGTON .15-1.00.
PERENNIALS: .10-3.00.
HANGING BASKETS: .75-6.50 EACH.
CUT FLOWERS: 1.25-2.50 BOX.
TOMATO PLANTS: 25-.50 EACH.
VEGETABLE PLANTS: 1.00-7.00 FLAT.
ASSORTED SHRUBS: 1.00-12.00 EACH.

Cumberland Valley Produce Auction

(717)530-5007
Koser Road, Shippensburg
June 8, 9, 12, and 13
Report Supplied by Auction
APPLES: RED DELICIOUS 1.50-4.75 % BU., GOLDEN DELICIOUS 4.50 % BU.; YORK 2.00 % BU.
ASPARAGUS: .60-1.80 % LB.
BROCCOLI: 3.00-7.00 % BU.
CANTALOPES: 1.00-1.90 EACH.
CAULIFLOWER: .30-1.70 HEAD.
CHERRIES: SOUR 15.50-17.00 8 QT. FLAT, SWEET 12.00 8 QT. FLAT.
BEANS: GREEN 16.00 % BU.
KOHLRABI: 3.25 % BU.
LETTUCE: HEAD .22-.80 EACH, LEAF .40-.55 BUNCH.

Buffalo Valley Produce

Mifflinburg R3
June 13 and 15
Sale every Tuesday and Thursday
Report Supplied by Auction
ASPARAGUS: 1.35 LB.
CANTALOPES: 1.10-2.00 EACH.
SPRING ONIONS: .23-.40 BUNCH.
BUNCH BEETS: .50-.80.
PEAS: SUGAR 1.25 LB.; SUGAR SNAPS .75 LB.; HULL 20.00 BU.
STRAWBERRIES: 90-1.80 QT.
MELONS: 2.00-3.50 EACH, SEEDLESS 3.00.
RADISHES: 30 BUNCH.
HONEY: 1.00 LB.
TOMATOES: 10.00-15.00 25 LBS., HOTHOUSE 9.00 20 LBS.
FLOWERS: BY THE FLAT 1.00-6.00.
HANGING BASKETS: 10" 3.00-9.00.
VIDALIA ONIONS: 16.00 50 LBS.
PEACHES: 9.00-12.00 25 LBS.
NECTARINES: 9.00-12.00 20 LBS.
ZUCCHINI: 7.00-8.00 % BU.
NEXT WEEK'S AUCTION TUES. AND THURS., 10 A.M. VOLUME HEAVY; QUALITY EXCELLENT.

ONIONS: SPRING 10.40 BUNCH; VIDALIA 5.00-8.00 50 LBS., 1.25-3.75 10 LBS.
PEACHES: 6.50-13.50 % BU.
PEAS: HULL 4.25-12.75 % BU.; SUGAR AND SUGAR SNAP 5.00-9.25 % BU. % BU.
POTATOES: UNCLASSIFIED 2.25 50 LBS.; RED 2.00-2.25 50 LBS.
RED BEETS: .16-.65 BUNCH.
RHUBARB: 20 BUNCH.
STRAWBERRIES: 4.75-14.75 8 QT. FLAT.
SWEET CORN: 8.00-10.00 CRATE.
TOMATOES: VINE RIPE 8.00-19.50 BOX.
WATERMELON: 1.25-3.60 BACH.
ZUCCHINI: 7.00-11.00 % BU.
BEDDING PLANTS: ALL BY THE FLAT, MARIGOLDS 2.25-3.25; IMPATIENS 1.00-6.00; PETUNIAS 1.25-6.00; BEGONIAS 1.75-3.00; AGERATUM 1.00; COLEUS 3.00-3.25; VINCA 1.50-4.75; SALVIA 2.25-2.50; MIXED FLOWERS 1.00-3.50.
VEGETABLE PLANTS: ALL BY THE FLAT, PEPPERS 2.00-6.75; LIMA BEANS 2.50; MIXED HERBS 2.00-3.00; CELERY 4.00; RED BEETS 1.00.
THE FOLLOWING IN 4"-6" POTS, SPIKES .08-.12; GERANIUMS .10-.55; NEW GUINEA IMPATIENS .10-.70; STRAW FLOWERS .16; AGERATUM .10; SALVIA .50; EGGPLANT .20-.75; PEPPER .25; HOT PEPPER .10.
PLANTERS: 2.25-8.00 EACH.
HANGING BASKETS: 4.50-6.50 EACH.
SALE DAYS NEXT WEEK ARE MONDAY, TUESDAY, THURSDAY, AND FRIDAY, 10 A.M.

Leinbach's Shippensburg Produce Auction

(717)532-5511
Shippensburg, PA
Average Prices Of #1 Produce
June 8, 9, 12, and 13
Price Differences are Quality, Size or Days
Open 10 a.m. Mon., Tues., Thurs, Fri.
Report Supplied by Auction
APPLES: 2.00-4.00 % BU.
ASPARAGUS: 1.00-1.35 LB.
BEANS: 14.00-16.50 % BU.
EGGS: 56-.76 DOZ.
PEAS: SUGAR AND SUGAR SNAP 5.00-15.00 10 LBS.; HULL 5.0-12.00 % BU.
POTATOES: UNCLASSIFIED 50 LBS. 3.00-4.50.
SPRING ONIONS: 4.00-5.50 20 COUNT % BU.
RED BEETS: 4.00-5.00 BU.
STRAWBERRIES: 8.00-14.50 8 QT. FLAT.
HANGING BASKETS: ALL VARIETIES SMALL TO LARGE 1.50-5.00.
MIXED PLANTERS: SM. TO MED. 1.00-3.00.
PERENNIALS: 4" POTS .25-1.00

EACH, GAL. POTS. 35-2.00 EACH; NONSTOP TUBEROUS BEGONIAS, NEW GUINEA IMPATIENS .50-1.25 EACH.
FLOWERS: ANNUALS ALL VARIETIES 1.00-5.50 FLAT; PERENNIALS 2.00-6.25 FLAT.
VEGETABLE PLANTS: 1.00-5.25 FLAT.
GERANIUMS: .50-1.00 EACH; MARTHA WASHINGTON 1.25-3.00 EACH.
SHRUBS: SMALL AND MED. 1.00-6.00 EACH, MED. AZALEAS 3.50-5.00 EACH.
SOUTHERN PRODUCE
TOMATOES: VINE RIPE 10.00-18.50.
CANTALOPES: MED. TO LGE. .50-1.50 EACH.
PEACHES: MED. TO LGE. 7.50-11.00 % BU.
POTATOES: #1 9.00-11.25 50 LBS. WATERMELONS: MED. TO LGE. 1.35-3.25 EACH; SUGAR BABIES 1.10-1.25 EACH.
NECTARINES: 12.00-13.00 % BU.

Central U.S. Carlot

Beef Report
June 14, 1995
Report supplied by USDA
USDA NATIONAL CARLOT BEEF REPORT (INCLUDES MAJOR PRODUCTION AREAS IN THE MIDWEST AND TEXAS) AS OF 3 P.M.
COW AND BULL CARCASS FOB OMAHA
4.0 LOADS REPORTED COMPARED TO TUESDAY'S 3 P.M. REPORT: UTILITY CARCASSES STEADY; CUTTER NOT ESTABLISHED; BULLS 1.50-2.00 LOWER. DEMAND AND OFFERINGS LIGHT.
UT, BRK 2-4 450 LBS. AND UP, 1.0 LOADS, RANGE 64.00, LATEST EXT. MKT. 64.00.
UT, BNG 1-3 400 LBS. AND UP, 1.0 LOADS, RANGE 68.00, LATEST EST. MKT. 68.00.
CUTTER 1-2 350 LBS. AND UP, LATEST EST. MKT. 71.50-73.00 C.
BULLS YG1 500 LBS. AND UP, 2.0 LOADS, RANGE 78.00-79.00, LATEST EST. MKT. 78.00-79.00.
COW AND BULL CARCASSES CAF WEST COAST
0 LOADS REPORTED.
COMPARED TO LAST WEEK: MARKET FOR WEEK ENDED JUNE 9, 1995.
UT, BNG 2-4 400 LBS. AND UP, RANGE 68.00-69.00.
CUTTER 1-2 350 LBS. AND UP, RANGE 69.00-70.00.
BONELESS PROCESSING BEEF BEEF TRIMMINGS
145.0 LOADS REPORTED
FRESH 90% BONELESS BEEF MOSTLY STEADY; 75% 1.00-2.50 LOWER; 65% STEADY TO 3.00 LOWER. DEMAND LIGHT TO MODERATE

FOR MODERATE OFFERINGS. BEEF TRIMMINGS LOWER ON MOSTLY MODERATE DEMAND AND OFFERINGS.
FOB OMAHA BASIS
90% FR, 19 LOADS, RANGE 88.0-90.0, WT. AVG. 89.13.
75% FR, UNQUOTED.
85% FR, UNQUOTED.
85% FZ, UNQUOTED.
75% FR, 12 LOADS, RANGE 69.0-69.5, WT. AVG. 69.13.
75% FZ, UNQUOTED.
65% FR, 17 LOADS, RANGE 55.0-56.5, 62.5, WT. AVG. 55.65.
65% FZ, UNQUOTED.
50% FR, 73 LOADS, RANGE 37.00-41.00, WT. AVG. 38.92.
50% FZ, UNQUOTED.
50% BX, UNQUOTED.
BULL 92-94, 2 LOADS, RANGE 102.0-104.00, WT. AVG. 103.00.
FOB EAST TX AND OK
90% FR, 10 LOADS, RANGE 88.0-89.0, WT. AVG. 88.70.
90% FZ, UNQUOTED.
85% FR, UNQUOTED.
85% FZ, 75% FR AND FZ, 65% FR AND FZ, UNQUOTED.
CAF NORTHEAST AREAS
90% FR, 12 LOADS, RANGE 92.0-94.0, WT. AVG. 93.17.
90% FRZ, 85% FR AND FZ, 75% FR AND FZ, AND 65% FR AND FZ, UNQUOTED.
CAF WEST COAST BASIS FOR WEEK ENDED 06/09/95
90% FR, RANGE 95.0-96.5, WT. AVG. 96.13.
85% FR, RANGE 85.0, WT. AVG. 85.00.
75% FR, UNQUOTED.
65% FR, RANGE 63.0-66.0, WT. AVG. 64.48.
50% FR, RANGE 48.5, WT. AVG. 48.50.
ABCDE AFTER QUOTES REPRESENTS DAYS SINCE LAST ACTUAL MARKET TEST. QUOTES ARE DROPPED AFTER 5 DAYS OF NO TEST OR BEFORE IF THEY NO LONGER REFLECT CURRENT MARKET CONDITIONS.
SOURCE: USDA MARKET NEWS, DES MOINES, IA, (515)284-4460.

Westminster Livestock

Hagerstown, Md.
June 13, 1995
Report supplied by auction
SLAUGHTER COWS: 84 HEAD, 1.00 LOWER. UTILITY 39.00-42.00; HIGH DRESSING TO 43.75, 1 AT 47.00; CANNERS 35.00-39.00; SHELLY 35.00 DOWN.
BULLS: YG#1 3 HIGH DRESSING 1550-1700 LBS. 57.00-62.50; 1 2230 LBS. AT 53.25; YG#2 47.00-50.25.
FED STEERS: HIGH CHOICE TO PRIME 1100-1400 LBS. 62.00-64.25; CHOICE 60.00-62.00; SELECT 55.00-60.00; LOW CHOICE HOLSTEINS 1300 LBS. TO 52.75.
FED HEIFERS: HIGH CHOICE #3 1000-1200 LBS. 59.00-61.00; 1 #4 AT 55.00; 1 865 LB. AT 54.00.
VEAL CALVES: 148 HEAD. CHOICE 180-300 LBS. 80.00-95.00; GOOD 65.00-75.00; CULLS 85-110 LBS. 38.00-45.00; 50-80 LBS. 30.00-38.00.
FARM CALVES: HOLSTEIN BULLS 5.00 LOWER. #1 95-120 LBS. 90.00-110.00; #2 80-100 LBS. 55.00-85.00; HOLSTEIN HEIFERS FEW

95-120 LBS. TO 167.00; BEEF X BULLS AND HEIFERS TO 97.50.
BUTCHER HOGS: 60 HEAD. US#1&2 230-250 LBS. 40.60; #1&3 225-260 LBS. 38.00-39.25; 210-225 LBS. 37.50-38.25; 300-340 LBS. 27.00-32.00.
STOCK CATTLE: 103 HEAD.
STEERS MEDIUM AND LARGE FRAME 400-600 LBS. 62.00-73.00; 600-800 LBS. 59.00-66.00; 800-950 LBS. 52.00-59.00.
HEIFERS: 300-500 LBS. 55.00-67.00; 500-700 LBS. 47.00-59.00; 700-900 LBS. 43.00-49.00.
BULLS: 200-400 LBS. 65.00-80.00; 400-600 LBS. 60.00-70.00; FEW 800-900 LBS. 48.00-59.00.
LAMBS: 68 HEAD. CHOICE 100-120 LBS. 78.00-82.00; 80-100 LBS. 79.00-87.00; 60-80 LBS. 87.00-95.00; 35-60 LBS. 70.00-90.00.
SHEEP: 25.00-40.00; HEAVIES 19.00-22.00.
GOATS: LARGE 70.00-95.00; MEDIUM 35.00-60.00; SMALL FLESHY 25.00-40.00; SMALL 15.00-25.00.
PIGS AND SHOATS: BY THE HEAD FROM TESTED HERDS, 40-50 LBS. 27.00-34.00; 50-70 LBS. 30.00-35.00.
SOWS: 15 HEAD. 350-500 LBS. 24.00-27.00; 500-700 LBS. 26.00-28.75.
BOARS: 7 HEAD. 400-700 LBS. TO 21.60; 250 LBS. TO 25.75.
NEXT TUES., JUNE 20, 7 P.M., SPECIAL GRADED FEEDER PIG SALE. DEMAND IS STRONGER AS PIGS ARE IN SHORT SUPPLY.

Frederick Livestock Auction

Frederick, Md.
June 12, 1995
Report Supplied by Auction
SLAUGHTER COWS: 86 HEAD, 1.00 HIGHER! UTILITY 39.00-43.25; HIGH DRESSING 44.00-45.75; CANNERS 35.00-39.00; SHELLY 35.00 DOWN.
BULLS: YG#2 1100-1650 LBS. 48.00-49.00.
FED STEERS: LOW CHOICE HOL 1600-1800 LBS. 48.00-51.25.
FED HEIFERS: FEW OFFERED.
VEAL CALVES: 283 HEAD. LOW CHOICE 150-325 LBS. 74.00-80.00; CULLS 85-110 LBS. 40.00-49.00; 50-80 LBS. 35.00-40.00.
FARM CALVES: HOLSTEIN BULLS 10.00-20.00 LOWER. #1 95-120 LBS. 85.00-100.00; 80-90 LBS. 50.00-80.00; HOLSTEIN HEIFERS #1 90-120 LBS. 160.00-180.00; 70-85 LBS. 90.00-160.00; BEEF X BULLS 120.00; HEIFERS TO 105.00.
BUTCHER HOGS: 50 HEAD, 1.00 HIGHER. US#1&2 225-255 LBS. 40.10; 220-260 LBS. #1&3 38.00-39.50; 265-285 LBS. 35.00-38.00.
SOWS: 400 LBS. TO 25.50.
BOARS: 400 LBS. TO 21.25.
STOCK CATTLE: STEERS, NO LIGHT WEIGHTS, 550-650 LBS. WITH HORNS 50.00-58.00.
HEIFERS: HOLSTEINS 150-190 LBS. 106.00-122.00; 225-300 LBS. 85.00-100.00; HOL X 300-400 LBS. TO 59.00.
BULLS: NONE.
SHEEP: NONE.
GOATS: NONE.
PIGS AND SHOATS: 16 HEAD. BY THE HEAD, 25-35 LBS. 22.00-28.00.
HATFIELD QUALITY MEATS...41.00 PLUS BONUS ON QUALITY HOGS. BUYING STATION HELD EVERY TUES. AT FOUR STATES.

FINISHING BARN



Call Hershey Ag
(800)544-4574
(717)653-8783

SPECIAL NOTICE

Walter M. Dunlap & Sons, Inc. is pleased to announce that of Monday June 5, 1995, Jack Ward will be the new manager of the firms Calf, Lamb, and Goat Division.
Mr. Wards long time experience in lambs and goats will add a further dimension to the firms capable staff of livestock specialists.
You will be able to contact Mr. Ward at 717-397-5136

FANS



DAYTON 24" 1/4 HP
TOTALLY ENCLOSED MOTOR
4520 CFM
\$139⁵⁰

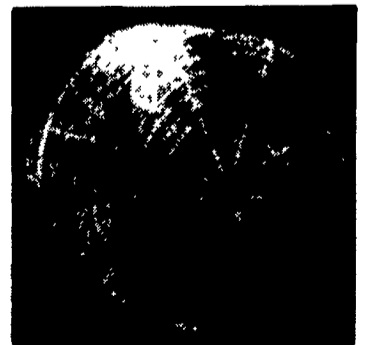
Free Shipping-Call For Details!



•24" •1/2 Horsepower
•Ball Bearing Motor
•Variable Speed

8500 CFM
\$219⁰⁰

4 More **\$209⁰⁰**



Low 2.5 Amp Motor
Less Cost Per CFM

Brandt's Farm Supply

601 E. High Street, Elizabethtown 17022
(717) 367-1221

