

**R & R CAR AND TRUCK CENTER**

1657 Rohrerstown Road, Lancaster, PA



**1987 IVECO 340T,**  
20' Flatbed 6 Cyl Turbo  
Diesel, 5 Spd., 18,900 GVW,  
New Paint, Clean Truck  
**\$7,500**



**82 IHC**  
S1954, DT466, 5 & 2 Spd.,  
P/S, A/B, 33,200 GVW, 14'  
Platform Dump, New Insp.,  
Very Clean



**1979 IHC**  
S1954, DT466, 5&2 Spd.,  
P/S, Hyd. Brakes, 29,800  
GVW, 16' C&C, with PTO,  
New Paint  
**\$6,900**

**CALL FOR DETAILS!**

Also Vans, Flats & Reefer Body For Sale - Many Sizes

**Call Ray Leed 717-560-4901**



**1984 International Model 9670 400**  
Cummins, 9 spd, single axle air ride,  
4 Aluminum wheels, new rubber,  
recent engine work, rebuilt rear  
3:55 RAR **\$12,000 obo**  
**717-632-7864**

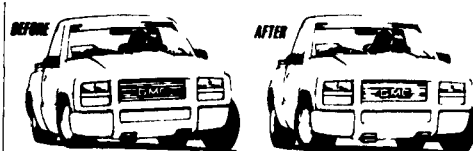
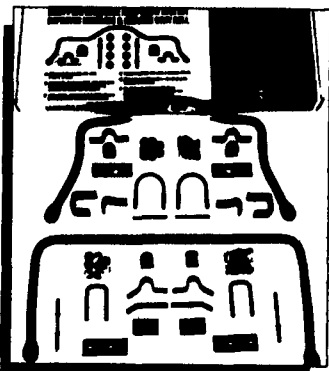
Also Freightliner Parts,  
2-Fuel Tank Mounting Brackets  
1-Fuel Tank Step  
1 Set-Muffler Mounting Brackets

**For Better Ride & Handling  
Performance of Your Vehicle Call  
Binkley & Hurst Bros. Parts Dept. Today**

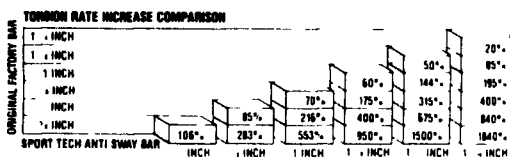
**If You Are Not Satisfied With The Ride You  
Are Getting From Your Van, Truck or  
Automotive Vehicle Call**

**Binkley & Hurst For Your Kit and  
Installation Appointment Now!**

**SPORT TECH Anti-Sway Bar Kits for mini-, mid-, and full-size trucks, vans and  
sport utility vehicles**



**SPORT TECH** (Technically Enhanced Control & Handling) Anti Sway Bar Kits are designed to reduce body roll in vehicles with typically higher centers of gravity and load capacities. Dramatically improve your vehicle's handling and cornering control with a set of front and rear **SPORT TECH** kits whether you are a Down Low Street Cruiser or Off Road Bruiser.



As you can see in the chart above **SPORT TECH's** larger diameter 4140 alloy steel bars give a significantly higher torsional rate increase (resistance to body roll) than original factory bars. The performance improvement will be even more significant with the addition of a rear anti-sway bar kit since most Pickups, Vans and Sport Utility Vehicles do not come equipped with factory rear sway bars.

- EACH KIT IS ENGINEERED TO YOUR SPECIFIC VEHICLE MODEL
- EASY BOLT ON INSTALLATION IN ABOUT AN HOUR USING SIMPLE HAND TOOLS - NO WELDING OR DRILLING REQUIRED
- HEAVY DUTY 4140 CHROME MOLY STEEL ANTI SWAY BARS ARE HOT FORMED AND HEAT TREATED FOR MAXIMUM STRENGTH AND DURABILITY
- EACH KIT INCLUDES LONG LASTING HIGH DURUMETER POLYURETHANE BUSHINGS TO ASSURE SUPERIOR PERFORMANCE

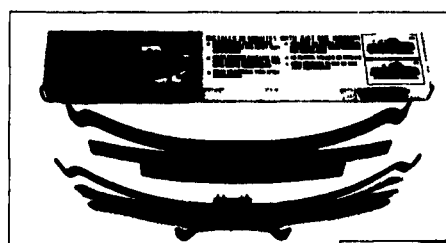
4-Wheel Drive Mini Trucks &  
Sport Utility Vehicles

APPLICATIONS

Passenger & Commercial Vans

**For Your Vehicle Suspension Needs Call Binkley & Hurst Parts Dept.**

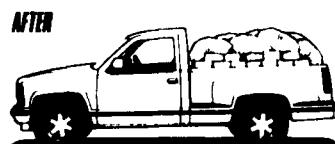
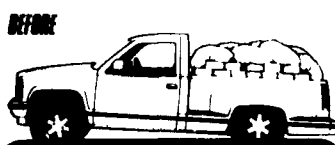
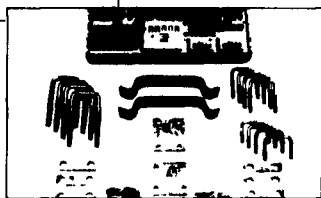
**LP-25 Helper Spring Kits for full-size trucks, sport utility vehicles and vans**



**Load Pro  
Series Helper Spring Kits**



LP-25 Helper Spring Kits bolt-on to old or new existing factory rear leaf springs to "help" the suspension realize its full, level load carrying capacity potential. Your "heavy load" driving is safer and easier with proper vehicle leveling for increased driver comfort, better road handling and braking. LP-25 Helper Springs are manufactured from high quality alloy spring steel, hot-formed and heat-treated for extra strength and durability. The kits come in two versions: Constant load kits for full-time suspension support - ideal where loads are typically more constant, such as on contractor/commercial service trucks and motorhomes. Progressive load kits can be adjusted for additional level load carrying assistance when hauling an occasional load of firewood or towing a trailer. Factory ride and handling characteristics are unaffected when vehicle is not loaded. LP-25 Helper Spring Kits are also available for motorhome applications. Call your WD or Helling Products Co. for details.



NOTE: Because factory leaf spring widths vary, LP-25 Mounting Kits are sold separately and must be ordered with Spring Kits to ensure proper installation.

**BINKLEY & HURST  
BROS. INC.**  
Fax No. 717-626-0996

133 Rothsville Station Rd.  
P.O. Box 0395  
Lititz, PA 17543-0395  
(717) 626-4705  
1-800-487-2978

Farm Plan  
A Service of FPC Financial



**LEFEVER BROS.  
CHEVROLET  
CHEVY TRUCKS  
GEO.**

406 U.S. Route 15 North, Dillsburg PA

Quality Dealer Since 1921 **717-432-961**

**1995 CHEV C-70**

26,000 GVW, 5+2 Speed Cat  
Diesel; 240" Wheel Base or  
Shorten To Your Spec.!

**2 In Stock**



**1995 CHEV Hd-3500**

15,000 GVW, 454 Gas, Auto &  
Manual In Stock  
159.5 Wheel Base



**1995 CHEV 14' CUBE VAN**

Lift Front End, V-8, Gas,  
11,000 GVW

**2 In Stock**



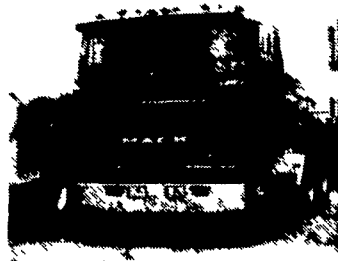
**Keystone Peterbilt, Inc.**

1467 Manheim Pike • P.O. Box 4396 • Lancaster, PA 17604

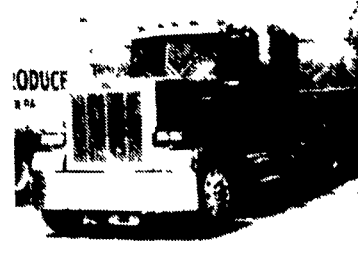
1-800-  
243-2458



717-  
299-6630



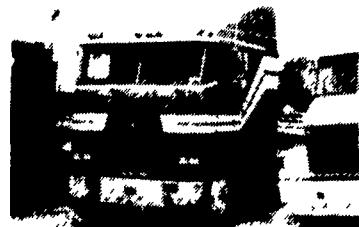
**1986 MACK MH 613;** Mack 350 HP, Mack T2090  
9 Speed, Mack 34,000 Lb Rears, Mack Camel  
Back Susp, Air Ride Cab



**1984 PETERBILT 359-38" 3405A 400**  
RTX14609PR Trans SQ100-373 Pete Air  
Leaf

**1990 IHC 9670**

3406-350;  
RTX14609B  
Transmission;  
Inc 400 R. Axle  
Air Ride



**1988 PETERBILT 362-110;** 3406-350, RT014609B,  
Trans, DS402, 4 33 R Axle, R Axle, Pete Air Ride



**1987 PETERBILT 362-110";** 3406B-350 Eng,  
RT014613 Trans, DS402-370 Rear Axle,  
Peter Air Leaf Susp

**1995 MODEL 330  
MEDIUM DUTY  
PETERBILT**

Engine Cat 3116 230  
HP, Transmission Fuller  
FS6306A, 6 Speed,  
Rear Axle Eaton  
21065S 21,000 Front  
Axle Eaton EFA 12F4  
12,000 Wheel Base  
190 Cab to Axle 120  
Cab to End of Frame  
195 33,000 GVW

