

## 25' Gooseneck Flatbed Trailer

### Standard Features

- ★ 20' Flat Deck with 5' Flip Up Dovetail
- ★ 7000# Rubber Torsion Axles
- ★ 950 x 16.5 10 Ply Tires
- ★ 5' Floating Ramps
- ★ 6" Structural Side Rails with Outside Pockets and Heavy Tie Rail
- ★ Treated Pine Floor
- ★ Dovetail Jack

**\$4,695**



**Hostetler Truck Bodies & Trailers**  
Rt. 322 Milroy, PA 17603  
(717) 667-3921

### IN STOCK AT HOSTETLERS

#### Truck Equipment

8' & 9' Replacement Flat Bed Truck Bodies.....Starting at \$750  
8' Pick Up Truck Insert Bed Dumpers, Electric Hydraulic Pump, with Cab Protector, Cash & Carry.....\$1,875  
Used 9' Knapheide Stake Body, Treadplate Floor, 40" Racks.....\$700  
9' Knapheide Gooseneck Toolbox Body, to fit One Ton Dual Wheel Truck, Not Installed.....\$1,200

Much More in Stock Plus Toolboxes, Hoists and Parts

#### Trucks

1985 Chevy 3/4 Ton Truck, V8, Auto, with 8' Fiberglass Service Body, Good Shape.....\$3,775  
1973 International, V8 Gas, PS 5+2 Speed, 23,000# GVW, Needs Some Work.....\$1,000  
1976 International One Ton, V8 Gas, 4 Speed, 12 Van Body.....\$2,495  
1980 International 1700 Series with 9' Chipper Body, 20,000# GVW, 5' Crew Cab, V8 Gas, 5+2 Speed, 88,000 Miles.....\$6,500  
1982 GMC 20,000# GVW, V8 Gas, 5 Speed with 14' Van Body, Good Rubber, New Inspection.....\$3,900

#### Utility & Flatbed Trailers

5'x8' Single Axle Flat Bed Trailer, 1500# GVW.....\$695  
5'x10' Single Axle Tilt Trailer, 15" Wheels & Tires, 3000# GVW.....\$950  
5 1/2'x8' Hostetler Aluminum Single Axle Utility, Made to Fit Standard 8' Truck Cap, Torsion Axle, 3000# GVW.....\$1,295  
Used 8'x12' Snow Mobile Trailer, with Plywood Enclosure.....\$900  
6'4"x12' Single Axle Trailer, Spring Loaded Ramp Gate, Electric Brakes.....\$1,495  
6'4"x16' Tandem Axle Trailer, Spring Assist Ramp Gate, Electric Brakes, 9000# GVW.....\$1,995  
Used 6'4"x18' Tandem Axle Utility Trailer, Steel Floor, Ramp Gate, 10,000# GVW.....\$1,600  
80"x18' Moritz All Purpose/Skid Loader Trailer, Oak Floor, Stake Pockets with Tie Rail, Ramps, 9500# GVW.....\$2,350  
80"x18' Moritz Utility Trailer, Heavy Duty Angle Top Rail For Double Deck Floor, 9,500# GVW, Ramps.....\$2,495  
76"x16' Hostetler All Purpose Trailer, 10,000# GVW, Treated Pine Floor, Adjustable Coupler or Ring, Swivel Jack, Sides Available.....\$2,550  
8'x18' Deck Over Trailer, 16' Flat with 2' Dovetail and 5' Ramps, Treated Pine Floor, 10,000# GVW.....\$3,250  
8'x23' 12 Ton Low Boy Trailer, Electric Brakes 16' Flat with 5' Dovetail, 5' Ramps, Oak Floor.....\$5,280  
80" Wide x 18' Gooseneck Utility Trailer, 9800# GVW, Ramps, Electric Brakes, Oak Floor.....\$2,995  
8'x24' Gooseneck Flatbed Trailer, Treated Pine Floor, 2-7000# Rubber, Torsion Axles, Heavy Duty Jack.....\$3,995  
8'x25' Gooseneck Flat Trailer, 20' Flat with 5' Flip Up Dovetail, Treated Pine Floor, 5' Ramps, 2-7000# Torsion Axles, Electric Brakes.....\$4,695  
2 Used 16' Gooseneck Flatbed Trailers, 12000# GVW.....\$1,500-\$2,500

#### Dump Trailers

6'x10' Valley Dump Trailers, Removable Sides, Electric Hydraulic Hoist, Electric Brakes 7000# GVW.....\$3,395  
10000# GVW.....\$3,795  
8'x12' Hostetler/Knapheide Flatbed Dump Trailer, Truck Scissor Hoist, Knapheide 12' Truck Body Platform, 10,000# GVW, Electric Brakes, Radial Tires, Sides Available.....\$4,995  
7'x12' Hostetler/Tamaqua Contractor Dump Trailer, Truck Scissor Hoist, Tamaqua Dump Truck Body with 30" Front and Rear Gussets and 20" Sides and Double Acting Tailgate, 10,000# GVW, Radial Tires and Electric Brakes.....\$5,295

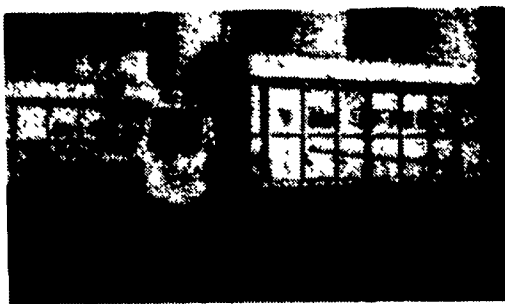
#### Livestock Trailers

12' Corn Pro Horse Combo Trailer, 7' Inside Height, Removable Breast Bar, Treated Pine Floor, 1-6 Month Old Used.....\$2700  
1 New.....\$2,995  
16' Corn Pro Bumper Pull Livestock, 6 1/2' Inside Height, Divider Gate with Half Slider, Torsion Axles, Treated Pine Floor.....\$3,180  
16' Moritz Bumper Pull Livestock Trailer, 10,000# GVW, Oak Floor, 7' High, Work Horse of a Trailer.....\$3,595  
Used 7'x16' Kiefer Built Gooseneck Livestock Trailer, Fiberglass Roof, Treated Pine Floor, Radial Tires, Like New.....\$4,795  
Used 6'8"x20' Corn Pro Gooseneck Livestock, 7000# Rubber Torsion Axles, Pine Floor, Only 6 Months Old.....\$4,900  
New 6'x16' Aluminum Bumper Pull Livestock Trailer, Torsion Axles, Electric Brakes, Radial Tires.....\$6,450

Other Trailers in Stock



**Hostetler Truck Bodies & Trailers**  
Rt. 322 Milroy, PA 17603  
(717) 667-3921



88 & 89 International S1954 Feed/Grain Trucks: DT466 Diesel 210 HP; Power Steering; Air Brakes; 35,000 GVW; 15' Aluminum Dump Beds; Roll Tarp; Rear Auger; Blower; **\$21,500.00 each**

**Curry Supply Co.**  
Curryville, Pa  
1-800-345-2829



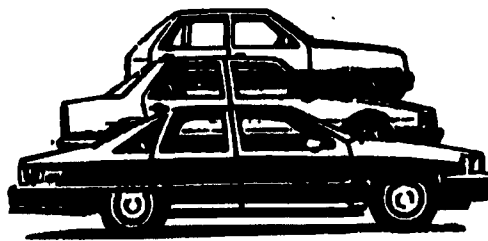
**1982 International S1754**  
with Insulated Body, Diesel, Power Steering, 5-Speed

**\$3,850<sup>00</sup>**

**Curry Supply Co**  
Curryville, PA  
1-800-345-2829

## The Long And Short Of Car Rentals

*Compact, Mid-size, Full-size,  
Long-terms, Short-terms,  
Your Terms*



- Low Daily, weekly, monthly rates
- Large fleet of late model cars
- Luxury cars for special occasions
- Special rates on insurance rentals
- Unlimited free mileage
- Free pickup & delivery
- Rent or lease with purchase option

**LANDIS RENT-A-CAR**



717-859-5466  
Brownstown, Pa  
717-569-9401  
Airport

76 GMC 3 Ton High Lift Coal Truck, Well Maintained, Fair Cond. **\$2,500**  
**717-653-9580**



#### MACK 6x6 TRUCKS

Cummins V8 Diesel Jake and full Air Brakes P.S. 1400/24 Tires Double Frame Rear Drag Winch (50,000 lbs.). Differential Locks. (60 Tons) Hauling Capacity. Like New Only 800-17,000 Miles. A must for every Farmer.

**\$10,500 to \$12,500**

**(814) 834-1018 St. Marys, PA**

### E.M. KUTZ, INC. NEW & USED EQUIPMENT SALE

#### Used Equipment:

Gledhill 707 Drop Tailgate Spreader.....\$750  
Diamond "V" Blade and Cylinders.....\$750  
7 1/2' Fisher Plow with Electric Power Unit.....\$1,200  
Gledhill 707M Spreader - never used.....\$1,050  
21' H.D. Platform with Winch.....\$650  
14' H.D. Platform with Hoist.....\$800  
Used Bartlett Hydraulic 5th Wheel, without Pump, As Is.....\$550  
Used Slider 5th Wheels.....\$250  
Used Stationary 5th Wheels.....\$150  
Turner Lift Axle Without Controls, 20" Wheels.....\$1,025  
Hell 1618F Conversion Hoist with Pump.....\$250  
Obeco 1030-550 Twin Cylinder Conversion Hoist.....\$800  
'89 Chevrolet Pickup Bed, without Tailgate.....\$500  
9' Steel Dump Body with Hoist & Pump.....\$775  
9' Steel Dump Body w/Hoist.....\$600  
8' Steel Dump Body w/Hoist.....\$700  
14' Steel Dump Body without Hoist.....\$950  
1985 Ford w/14' Platform Dump..\$1,300  
1970 Ford Single Axle Tractor with Wet Line.....\$995  
1970 Ford Chassis with 19,000 Miles and New 18' Grain Body & Hoist.....\$14,600  
Used Commercial C101 Pumps.....\$100  
**Many Other Used Pumps, PTOs, Hydraulic Systems**  
**New Equipment Unmounted:**  
18' H.D. Omaha Platform.....\$1,511  
20' H.D. Obeco Platform, weathered.....\$1,694  
22' H.D. Omaha Platform.....\$1,894  
Platforms in Stock from 8' to 22' Dump Bodies in stock from 8' to 17'.....**CALL FOR INFO.**  
8' Gas Engine Air Flo & Henderson Salt Spreaders, Three (3) in Stock.....\$2,875  
Meyer-type Poly Spreaders (Buyers brand), Pre-season special.....\$825

**COMPLETE INVENTORY OF FISHER & MEYER SNOWPLOWS**

**LARGE STOCK OF TOOL BOXES—CALL FOR PRICING**

**E.M. KUTZ, INC.**  
Reading, PA  
**610-775-3528**