

'89 Ford XLT E150, 7 passenger (4 captains & 3 passenger fold-a-bed) 300 EFI, auto, PS, PB, PW, PDL, cruise, tilt, air, AM-FM cassette, privacy glass, brown & white, 67,000 miles, excellent condition, \$8,975. 717-733-2873

'90 Chevy Silverado 3500, 3+3 crew cab, 350 FI, auto, PB, PS, air, AM-FM cassette stereo, 9,000 GVW, black & silver, excellent condition, \$13,900. 717-733-2873

'90 Dodge 350, 15 pass, 360 auto, PS, PB, AM-FM, dual air & heat, cloth interior, burgundy & silver, new radials, \$9,500. 717-733-2873

'90 Ford F350 crew cab, 351 EFI, auto, PS, PB, air, AM-FM, dual tanks, 9,200 GVW, charcoal, 1 owner, excellent condition, \$12,500. 717-733-2873

'90 Ford XLT F150 super cab, 300 EFI, 5 spd, PS, PB, PW, PDL, cruise, tilt, air, AM-FM cassette, black & silver w/matching fiberglass cap, 44,000 miles, new radials, excellent condition, \$11,900. 717-733-2873

'92 Chevy Tahoe S10, ext. cab, V6, 5 spd, PS, PB, AM-FM cassette stereo, 29,000 one owner miles, red & silver, like new, \$9,500. 717-733-2873

'92 Ford E150 XLT, 8 passenger, 302 EFI, auto, PS, PB, PW, PDL, cruise, tilt, dual air & heat, privacy glass, burgundy & silver, excellent condition, \$12,500. 717-733-2873

1974 Ford Dump Truck
16' dump bed, complete, new motor, 5+2.
\$3,000
(717) 436-6671

E-TOWN DODGE

(2) 1995 BR 3500
4x4, Cab & Chassis or w/Utility Body or w/Dump

1994 DODGE BR1500
19K, Auto, SLP, Air

Club Cabs.....Coming
1/2, 3/4 & 1 ton 4x4.
Pickup Trucks in Stock
Diesels Automatic & 5-spd. in Stock
(15) Dakota's in Stock

ASK FOR MILTON HESS
Certified Truck Specialist
717-367-6644
717-653-6667
Elizabethtown, PA

ROLLBACK 1984 FREIGHTLINER FL 70, 250 HP, 9 Speed Trans, 33,000 LB GVW, Air Brakes, PS, AC, 58,000 Miles, 24 Ft. Rollback, 10" Wheel Drops, Aptong Floor, 15,900 Lb. Payload
Stock #1942

1983 MITSUBISHI FK-MR, 18' Morgan w/MDII Thermo King; Roll-up Rear Door & Side Door, "T" Flooring; Load Ramp, 25,590 GVW, PS; A/C, 42,000 Mi.
Stock #1969

1989 MITSUBISHI FE-HD, 5 Speed, 4 Cyl. Turbo Diesel, 13,000 GVW, 16' Box w/Liftgate
Stock #1989

1992 CHEVY G30 14' HICUBE, 350 Eng., AT/O, 10,000 GVW, 33,000 Mi.
Stock #2001

FOUR WAY AUTO SALES
770 West Main St., New Holland, PA 17557
717-354-3199

LEFEVER BROS. CHEVROLET CHEVY TRUCKS GEO.

YOUR DIRECT LINE TO GENUINE GM PARTS
(800) 533-3837

When you call the number listed above, you'll reach our wholesale parts specialists, who can help you keep your GM repair work moving quickly.
Ask about:

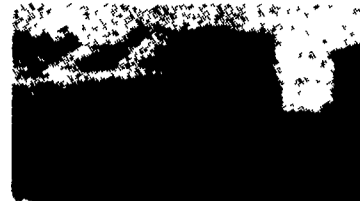
- Specializing in GM Medium Duty Trucks, Current and Obsolete.
- \$500,000 Parts Inventory.
- Parts Locator for Those Hard to Find Items.
- We Ship Anywhere, Local Delivery Available.
- Experienced, Knowledgeable Personnel.

Mon., Tues., Thurs., Fri. 7:30 a.m.-4:30 p.m. (717) 432-9697
Weds. 7:30 a.m.-8:30 p.m. Quality Dealer Since 1921
Major Credit Cards Accepted 406 U.S. Rt. 15, Dillsburg, PA 17019

GM Goodwrench Service

Kodlak Chevy Trucks CAT DIESEL POWER

USED TRUCKS



'95 Chev 3500 Cab Chassis 4x4 Dual Wheels, 60: CA, 7.4 FI or 454, 5 Spd., PS, PB, AC, Cruise, Tilt Wheel, AM & FM Stereo Cass., 4:10 Locking Rear Axle, Teal Green with Gray Cloth Interior
\$23,700



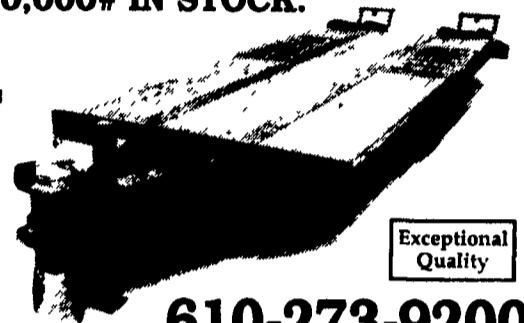
'94 Chev 3500 4x4 454 F.I., 4:10 Rears, PS, PB, AM-FM Stereo, 3,900 Miles, Red
\$19,400

Financing Available

MARTIN'S AUTO SALES
1025 W. Main St., New Holland, PA 17557
(717) 656-6621

HEAVY EQUIPMENT TRAILER
25 Ft. Tandem Axle, Dual Wheel Tagalongs.
25,800# and 50,000# IN STOCK.

Air brakes, 8' and 8 1/2' widths, 5' beavertails, 12,000# drop leg jack, toolbox in A frame, solid oak decking, reinforced A-frame construction, anti-corrosive undercoating and 60" spring-assisted ramps. Shot blasted, primed and painted a safety yellow acrylic enamel. One year warranty on ALL parts.



Exceptional Quality

Starting At **\$8,200**

610-273-9200

Financing Available

YARNALL'S EQUIPMENT CO., INC.

Rt. 322, 303 E. Main St., Honey Brook, PA

Transport For Christ Northeast Region 14th Annual

TRUCK RALLY

Saturday, June 24, 1995

A Family Fun Day!

Giant Parade of Trucks - 1:00 PM

Benefit Auction - 2:00 PM

Chicken BBQ Meal - 5:30 PM

Adult \$6.50/Child \$4.00

Call 665-6347 For Tickets

Southern Gospel Music by ...

Wendy Bagwell and the Sunliters

6:30 PM - No Admission Charge

Held Rain or Shine • Bring: Lawn Chairs

Lebanon Area Fairgrounds



SUPER SERVICE

Painting and sandblasting
Myerstown, PA
(717) 866-5351

ARMY TRUCK PARTS

CHAMBERSBURG, PA

SERVING THE NORTHEAST OVER 40 YEARS

THE NATION'S LARGEST ARMY TRUCK and PARTS DEALER

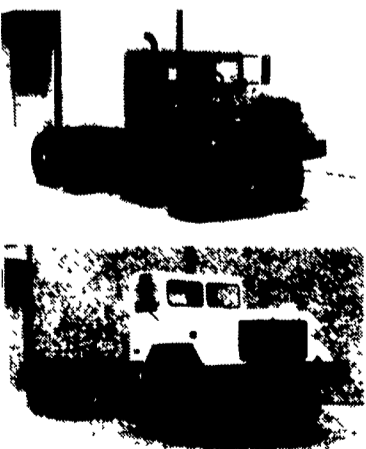
Request Our Free Army Truck Parts Catalog

MEMPHIS EQUIPMENT

821 Lincoln Way West
P.O. Box M
Chambersburg, PA 17201

717/263-4194 FAX 717/263-4555

ART WELLER, GEN. MGR.
MARK SIPES, PARTS MGR.



GMC - REO - 5 TON
DODGE 3/4 TON
KAISER - JEEP 1 1/2 TON
ALL 6x6 & 4x4

ENGINES
TRANSMISSIONS
TRANSFER CASES
DRIVE TRAIN
CAB KITS

C. M. HIGH INCORPORATED

Electrical Contractor

Industrial
Commercial
Residential

Myerstown, PA 866-7544



Christian Hit Music