

OK City Feeder Cattle
OKLAHOMA CITY, OK
JUNE 7, 1995

Compared to last week: Feeder steers and heifers firm to 2.00 higher. Trade active. Demand very good with strong support noted from combelt interests. Few steer and heifer calves 1.00-2.00 higher. Quality of supply mostly plain to average with brahma cross feeders accounting for large portion of the days sale. Conditions and quality of supply in direct contrast to last weeks light supply of attractive cattle with this week much plainer and with more fill. Flesh conditions of feeders slightly thin to fleshy. Weigh-ups average to full. Abundant rains causing some flooding early this week in parts of wheat country. Slaughter cows steady to 2.00 lower, decline on Utility cows. Slaughter bulls steady. Packer demand moderate to good and settled some from last weeks overly bullish affair. Total of 414 cows and bulls sold, 70 percent of the sales to packers. Receipts this week 12,575; last week's holiday interrupted period 4,197; last year 12,454. Supply consisted of 87 percent yearlings over 600 lbs; 10 percent calves under 600 lbs; 3 percent cows and bulls. Prices follow with weighted average weight and price in parenthesis.

Feeder Steers: Medium and Large 1 400-500 lbs (450 lbs) 78.00-83.50 (81.89); 500-550 lbs (521 lbs) 76.50-83.00 (78.85); 550-600 lbs (579 lbs) 72.00-78.00 (75.19); 600-650 lbs (617 lbs) 69.50-74.00 (71.70); 650-700 lbs (683 lbs) 66.00-71.50 (67.84); 700-750 lbs (724 lbs) 64.50-70.25 (66.75); 750-800 lbs (778 lbs) 63.00-66.75 (65.23); 800-850 lbs (819 lbs) 62.00-67.50 (64.47); 850-900 lbs (864 lbs) 61.75-66.00 (63.69); 900-1000 lbs (950 lbs) 58.75-63.75 (59.64); 1013 lbs 59.25; 1105 lbs 57.50.

Holstein (plain quality or full): Large 2 300 lbs 60.25; 450-500 lbs 55.00-57.75; 600-700 lbs 51.75-54.75; 700-800 lbs 50.75-52.25; 850-900 lbs 46.00-50.25.

Feeder Heifers: Medium and Large 1 300-400 lbs (350 lbs) 75.50-79.75 (78.57); 400-500 lbs (450 lbs) 72.00-79.00 (73.29); 500-600 lbs (550 lbs) 65.25-69.00, thin and gaunt 71.75-72.75 (68.57); 600-700 lbs (650 lbs) 63.00-67.25 (64.76); 700-750 lbs (720 lbs) 62.00-64.25 (63.54); 750-800 lbs (770 lbs) 58.25-64.25 (61.13); 800-850 lbs (823 lbs) 58.25-59.50 (58.95); 850-900 lbs (866 lbs) 56.75-58.75 (58.20); 900-950 lbs (917 lbs) 54.50-55.25 (54.93).

Slaughter Cows: Cutter, boning and breaking Utility average dressing 38.00-41.00; high dressing 40.50-43.75; low dressing 35.00-38.50. Canner and Low Cutter 31.75-34.50.

Slaughter Bull: Yield Grade 1 1350-2500 lbs average dressing 49.00-53.00; high dressing 55.50-56.50, high dressing/high boning 57.50; low dressing 46.00-48.00.

Replacement Cows: Pretested for bangs, pregnancy, and age Medium and Large 1 High quality single head sales: 2-6 year olds 950-1150 lbs 5-7 months bred 520.00-590.00

500.00-590.00
Source: USDA-Oklahoma Dept of Ag Market News, Oklahoma City, OK
Robert Miles - Tina Colby Telephone (405) 232-5425

Carlisle Livestock Market
Carlisle, Pa.

Tuesday, June 6, 1995
Report Supplied by Auction
SLAUGHTER: STEERS, NO CHOICE OFFERED; SELECT HOLSTEINS 970-1080 LBS. 54.75-57.00; SLAUGHTER COWS BREAKING AND UTILITY AND COMMERCIAL 40.00-43.75; CUTTER AND BONING UTILITY 39.00-46.00; CANNER AND LOW CUTTER 34.00-38.75; BIG MIDDLE 37.75-39.50; BULLS YG#2 41.75-46.00.

FEEDER CATTLE: HEIFERS 300-450 LBS. 69.00-75.00; HOLSTEINS/DAIRY TYPES 50.00-65.00.

CALVES: VEALERS STANDARD AND GOOD 40.00-75.00; CALVES RETURNING TO FARM, HOLSTEIN BULLS #1 95-120 LBS. 115.00-125.00, #2 90-135 LBS. 97.50-114.00; HOLSTEIN HEIFERS #1 85-140 LBS. 140.00-172.50.

SWINE: HOGS US #1-3 220-270 LBS. 39.00-40.25; US#2-3 37.75-38.75, 280-310 LBS. 34.50-37.50; SOWS US#1-3 325-550 LBS. 24.00-32.50, THIN/WEAK/ROUGH 20.00-22.75; BOARS ALL WEIGHTS 19.00-23.00.

FEEDER PIGS: BY THE HEAD, 15-25 LBS. 10.00-17.00, 30-40 LBS. 24.00-29.00.

GOATS: BY THE HEAD, FLESHY KIDS 40.00-65.00, SMALL KIDS 20.00-37.50.

LAMBS: GOOD AND CHOICE 80-105 LBS. 81.00-87.00, 110-130 LBS.

70.00-82.50.
SHEEP: ALL WEIGHTS 18.00-45.00.
NEXT STATE GRADED FEEDER PIG SALE FRIDAY, JUNE 9, 1:30 P.M., GRADING 7:00-11 A.M.
NEXT FEEDER CATTLE SALE TUES., JUNE 13, APPROX. 7:15.
NEXT SPECIAL FED CATTLE SALE TUES., JUNE 13.
ESTIMATED DIRECT HOGS BASE PRICE AT PLANT FOR WED., JUNE 7 IS 41.25.

SALE EVERY TUESDAY FOR LIVESTOCK, 7 P.M. SALE TIME, RECEIVING 8:30 A.M. ALSO EVERY TUES. WE HAVE SALE FOR RABBITS, POULTRY AND EGGS 5:55 P.M. SALE TIME, RECEIVING 4 P.M.

Middleburg Livestock

MIDDLEBURG, PA
June 6, 1995

CATTLE 400... SUPPLIED BY THE AUCTION ...steers and heifers steady, cows steady to .50 lower.

STEERS: High Choice and Prime 1130/1430 lbs. 64.00-66.50, few 67.00, Choice 1135/1460 lbs. 61.00-65.00, Select 56.00-61.00.

HOLSTEINS: High Choice and Prime 1260/1520 lbs. 56.00-58.00, Choice 1230/1480 lbs. 54.00-57.00, Select 49.00-54.00.

HEIFERS: High Choice and Prime 1150/1300 lbs. 58.00-64.00, Choice 980/1300 lbs. 54.50-57.25, Select 49.00-54.00.

COWS: Breaking Utility and Commercial 41.50-43.00, few 41.00-46.00, Cutter and Boning Utility 36.50-42.00, Canner

and Low Cutter 33.50-37.50. Shells 28.00-32.00

BULLOCKS: Choice 56.00-60.00, Select 51.00-56.00.

BULLS: Yield Grade No. 1 53.00-56.00, No. 2 46.00-53.00.

FEEDER CATTLE: STEERS: few Medium Frame No. 2 54.00-57.00; HEIFERS: Medium Frame No. 1 & 2 53.00-56.00; BULLS: Medium Frame No. 1 300/350 lbs. 62.00-78.00.

CALVES 309...VEALERS: Choice 76.00-84.00.

FARM CALVES: No. 1 Holstein bulls 90/115 lbs. 112.00-128.00, No. 2 90/115 lbs. 85.00-117.00; No. 1 Holstein heifers 90/120 lbs. 160.00-197.00, No. 2 80/100 lbs 120.00-172.00. Beef cross bulls and heifers 90/110 lbs. 75.00-110.00.

HOGS 441...(06/05 & 06/95)...Bulk of supply sold on Monday and reported by the auction.

BARROWS AND GILTS: US 1-2 230/260 lbs. 42.00-43.75, US 1-3 220/260 lbs. 40.00-42.75, US 2-3 215/260 lbs. 36.00-40.00, US 1-3 290/315 lbs. 32.00-36.00.

SOWS: US 1-3 375/480 lbs. 25.00-27.00, 480/600 lbs. 27.00-29.00, US 2-3 375/500 lbs. 20.00-26.00.

FEEDER PIGS 231...US 1-3 20/30 lbs. 25.00-27.00, 35/50 lbs 28.00-35.00. ---per head.

SHEEP 29...SLAUGHTER LAMBS: High Choice and Prime 75/85 lbs. 86.00-97.00.

SLAUGHTER SHEEP: 23.00-38.00.

GOATS 50 ...Large 60.00-86.00, Large Kids 40.00-60.00, Small Kids 27.00-40.00. --- per head.



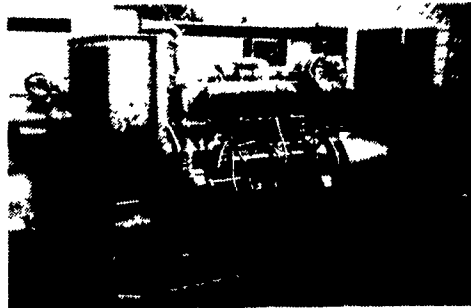
**BUYING AND SELLING
SOFT RED WHEAT
WHITE WHEAT
AND CORN**

Picked Up and Delivered Bids Available
Prices Quoted for Spot or Future Delivery

PROMPT PAYMENT

**ASK FOR
BILL KRUEGER
(800) 487-1474**

**WE WANT TO BUY
YOUR GRAIN**



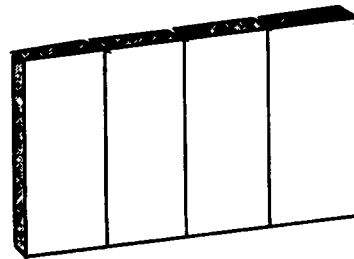
GENERATORS

Sales ★ Service ★ Rentals
★ Complete Generator Systems
★ PTO ★ Portables ★ 2-1600 KW
"We Service It If You Have It
And Sell It If You Need It"

34 W. Mohler Church Rd.
Ephrata, PA 17522

Tel: 717-738-0300
Fax: 717-738-4329

**Lancaster
Poured
Walls**



IT'S HAYLAGE SEASON - THINK BUNKER SILO!!
can you think of a better wall than poured on site with lower construction costs and no maintenance?

ASK FOR PRICES FROM:

Lancaster Silo Co., Inc.

2008 Horseshoe Rd. • Lancaster, PA • (717) 299-3721 • 800-770-3721

**Corn Substitute
Feed
HOMINY**

- More Affordable Than Corn
- Free of mold and toxins
- Made from Human Consumption Graded Corn
- Higher In Energy Than #2 Corn
- Already ground into useable form
- Available in most Md, Del., Pa, W. Va., Va., N.Y., and N.J. Points

Call PACMA Today
for details:
717-838-7050
1-800-PACMA INC.



NEED TO CUT THE FEED BILL?

**DAIRY BLEND COMPLETE
AND CONCENTRATE FEEDS**

COMPLETE FEEDS

#79514
Dairy Blend Flakes
14% All Natural
*157^M

#79516
Dairy Blend Flakes
16% All Natural
*159^M

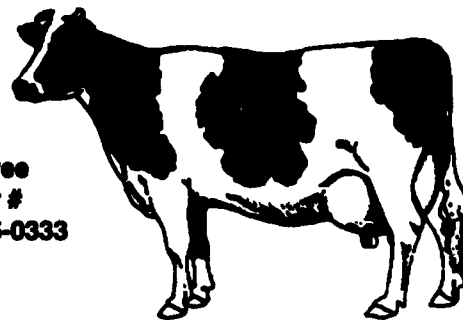
#79520
Dairy Blend Flakes
20% All Natural
*181^M

CONCENTRATE FEEDS

#51232
32% All Natural
Protein Pellets
*211^M

#51238
38% All Natural
Protein Pellets
*241^M

#50734
34% All Natural
Protein Pellets
*251^M



Toll Free
Order #
1-800-995-0333

Bulk Feed Available in 1 to 24 Ton Loads

Feed prices for week of June 12 and Subject to Change Weekly with Grain Market
Includes 8 ton volume discount and cash discount of 2.1% due 15th following month. Deduct additional \$3.00 per ton if paid in 10 days.



pennfield feeds

1-800-732-0467

Quality - Value - Service