

USED TRACTORS

"Will buy or trade tractors"

- JD 4450 MFWD, SGB, 3400 hrs.....\$43,000
 - JD 4250 MFWD, 1988, 2800 hrs.....\$42,500
 - JD 4650 MFWD, New Engine, 1985.....\$40,500
 - JD 4640 SGB, PS, 1 Owr, Gd Cond.....\$23,500
 - JD 2140, MFWD, hi/lo, same as 2750....\$14,300
 - JD 2030 4x4 Cab w/new Woods ldr.....\$12,500
 - Case 1845C skid ldr, 1992, 2000 hrs.....\$12,200
 - JD 2940 hi/lo 2 hyd., ind. PTO.....\$11,500
 - Case 1845C skid ldr., 1989, 3307 hrs....\$11,100
 - JD 4320 2 hyd. runs g.....\$10,600
 - JD 4020, 1970, SR trans, sharp.....\$9,800
 - JD 2440 Diesel, 1982, original.....\$9,700
 - JD 550 (435) Round Baler, Ex. Cond.....\$9,500
 - JD 2630 hi/lo, ind. PTO, 2 hyd. 2700 hrs \$9,200
 - JD 2240 Diesel, ind. PTO, original.....\$8,800
 - JD 2630 diesel, new paint, nice.....\$8,500
 - JD 3020 WF, PS, Original, 2 hydraulics....\$8,500
 - JD 1130 dsl, 50HP, same as 2240.....\$6,800
 - JD 2130 ind. PTO, diesel, nice cond.....\$6,500
 - JD 830, dsl, 3 cyl, sharp.....\$6,500
 - JD 4010 dsl., WF, 38" tires.....\$6,500
 - JD 2030 dsl, ind. PTO, 1979.....\$6,400
 - JD 2510 w/239T motor.....\$6,200
 - JD 2120, ind. PTO, dsl., 55 HP.....\$5,800
 - MF 65, diesel, runs excellent.....\$3,200
 - Ford 801 gas, selecto-speed.....\$1,800
 - INT 404, Gas, w/Side Mow.....\$1,600
 - JD factory WF for 3020 thru 4020, new....\$1,350
 - M&W turbo complete for 4020.....\$800
 - 4 Steel Wheels off JD 2030.....\$500
 - JD axle duals f/4230, 38".....\$500
 - JD 4020 or 3020 toplinks brand new....\$165 ea.
- New Woods Dual Loaders in Stock...20% Off List

Zimmerman Elevators, Hay Tedders
Wagon Gears & Forage Wagons
Farmco Metal Feeder Wagons, Bale
Bodies & Country Boy Gravity Bins
JD Front & Rear Weights J&L Hay Savers

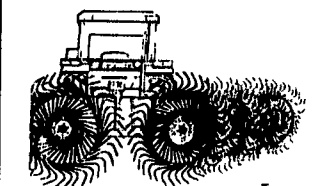
Reiff Farm Service

275 Goodhart Road, Shippensburg, PA 17257
Interstate 81, Exit 10, 174 East, Goodhart Rd Right
(717) 532-8601 Can Finance

- MASSEY-FERGUSON**
Where farmers ideas take root
- NH 258 hay rake
 - NH 770W pickup head
 - Ford 545A tractor loader, 300 hours
 - NH 488 haybine exc.
 - NH 40 blower
 - NH 717 harvester, IR corn head
 - Gehl CB 400 harvester, 2 heads
 - MC HD 6' flail cutter
 - Woods C80 rotary cutter
 - NH 668 left hand tank spreader
 - 10' 3pt. chisel plow
 - (2) Woods 15' batwing
 - NH 570 baler w/72 thrower
 - NH 520 manure spreader
 - MF 236 loader
- Coming in
NH 254 rake tedder
MF 285
NH L555 skid steer
NH 851 Auto wrap baler
MF 10 baler w/thrower

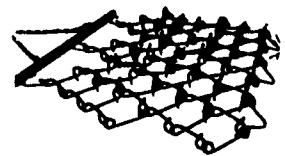


**NEW HOLLAND
SCHREFFLER
EQUIPMENT**
Pitman, PA
717-648-1120
717-648-1811



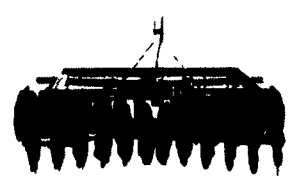
HAY RAKE

- 4 Wheel \$ 575
- 5 Wheel \$ 690
- Double Hay Rake \$ 325
- Frame complete 4 or 5 wheel.
- Spare Tines \$ 3.10 ea.



CHAIN HARROWS

WIDTH	LENGTH	PRICE
5'	4'6"	\$385
7'	6'	\$466
9'	6'	\$590
11'	6'	\$720
13'	6'	\$850
15'	6'	\$995
17'	6'	\$1125
19'	6'	\$1275



DISKS

3 POINT TANDEM DISK HARROW

4'	\$425
5' 6"	\$450
6' 6"	\$500
7' 6"	\$550



DUMP TRAILERS

Self-Contained
Removable Sides
Electric Brakes

Size	GVW	Price
6 x 10	7000 #	\$ 3199
6 x 10	10000 #	\$ 3495
7 x 12	10000 #	\$ 4500



HAY TEDDERS

TYPE	SIZE	PRICE
3-PT	8' 2"	\$1140
PULL	9'	\$1325
PULL	13' 6"	\$2560
PULL	17'	\$3215



SICKLE MOWERS

3 POINT
DYNABALANCE
BELT DRIVE
7FT \$2300

Ringo Hill Farms Equipment Co., Inc.

1624 Rt 212 Quakertown, PA 18951

(610) 346-7340

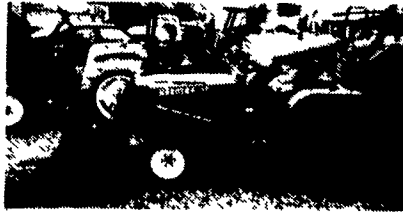
**HOT SUMMER
SALE ON COMPACT
TRACTORS**



(610) 926-2441

Rt. 2 Box 2008
READING, PA

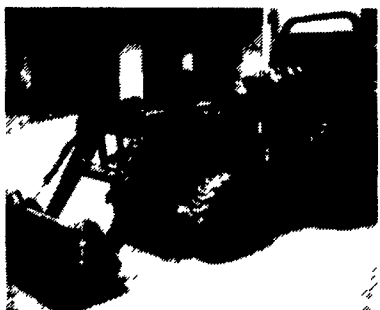
**YOUR
MID-SIZE
SOLUTION**



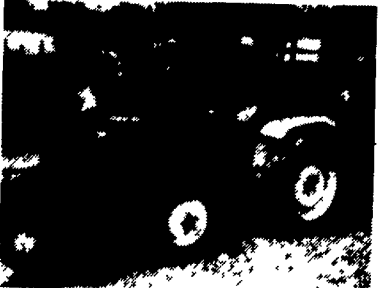
**Kubota B9200 HSD 4x4
w/Loader, Some Bad
Sheet Metal
Only \$7,500**



**John Deere 770
4x4, w/Loader 550 Hrs.**



**Kubota L2900 4x4
w/Loader, Only 425 Hrs.**



**Ford 1700 4x4
Tractor w/Loader
& Backhoe**

Located: 4 Miles North of Reading
on Route 61 - 3 Miles South of Leesport
Reg. Hours: Mon. thru Fri. 8 to 5; Sat. 8 to 12

4x4 TRACTORS

- JD 770 4x4 With Loader
- JD 850 4x4 w/Loader & Backhoe
- JD 950 4x4 With Loader & Backhoe
- JD 970 4x4 With Loader
- JD 1050 4x4 With Loader
- Ford 1700 With Loader 4x4
- Ford 1920 With Loader 4x4
- Ford 3400 w/Loader
- Kubota FZ 2100 w/60" Front Mower
- Kubota B-7100 4WD with Loader
- Kubota 7100 4x4 w/Mower, Hydro, Low Hrs.
- Kubota B-8200 4x4 With Loader
- Kubota B-9200 4x4 With Loader
- Kubota B-1550 4x4 With Loader
- Kubota L-2250 4x4 With Loader
- Kubota L2250 DT 4x4 w/Loader
- Kubota L2950 DT 4x4 w/Loader
- Kubota L2900 DT 4x4 w/Loader
- Kubota L-2850 4x4 With Loader
- Kubota L3750 4x4 TLB
- Wic Bedding Chopper (Straw)
- Brinley Cultivators & Discs (Reduced)
- New Harley Rock Rakes for Case Skid Loaders

BACKHOES

- Bradco 11MD, Fits Kubota L33 37 & 4150
- Kelley 30
- Arps 80 & 90
- Thomas 8' for Skid Loader
- New Woods 650's & 750's

SKID LOADERS

- Case 1835C - Nice Repaint
- Gehl 2500 Gas (needs paint)
- IH 4120 w/New Engine

REAR BLADES IN STOCK

5 ft., 6 ft., 7 ft., & 8 ft.

MISCELLANEOUS USED EQUIPMENT

- Kubota blade for G1800, 1900, 2000
- JD Blade Pwr. Angle for 318 JD, Etc.
- Landpride 1050, 50", 3 pt Tiller
- Landpride 1058, 58" 3 pt. Tiller
- Demo-Landpride 1548, 48" Over-Seeder
- New & Used Garden Tractor Harrows
- Danuser 23" Post Hole Digger
- Box Scrapers, 4' & 6'
- Harley Pro 6 (Demo)
- (2) Used 4' Brush Cutters
- Small Used 6 Ft. Backhoe Attachment (Needs Work)
- RC 7225 72" Belly Mower for L22, 25, 2850 Kubotas
- JD 60" Belly Mower for 770 Tractor
- Lely Spinner Spreader
- Kubota Bagger for G1800, 1900, 2000 w/60" Deck

MISCELLANEOUS NEW EQUIPMENT

- Landpride 25 60" Rear Finish Mower
- Landpride 25 72" Rear Finish Mower
- Landpride 15 48" Rear Finish Mower
- Danuser 9" & 12" Post Hole Diggers
- Pronovost 6'x50" Hyd. Dump Cart for Non Highway Use



**International 300
w/Loader
\$3,900**



**Kubota B1750 Hyst.
w/60" Belly Mower,
3 Pt. Hitch**



**Ford 3400 Tractor
w/Loader**



**Field Boss 16, 4x4
w/New Schwartz Loader**

NEW TO YOU EQUIPMENT

- Ford TW-20 w/Cab & Air, One Owner.....\$21,000
- Ford 9600 w/Cab & Air, One Owner.....16,900
- Ford 1910 w/Front Blade, 4x4.....\$10,500
- Ford 1210 4x4.....6,900
- Ford 801.....\$5,500
- Ford NAA.....\$3,500
- Ford 8N w/Rotary Mower.....\$3,600
- Mitsubishi w/Mid Mount Mower.....\$6,500
- JD 3020.....\$5,900
- Farmall Super A w/Front Blade & 3 pt. Hitch.....\$2,900
- Oliver 77.....\$1,700
- NH 575 Baler (Choice of 2).....\$9,500
- NH 326 Baler.....\$8,500
- NH 273 Baler w/Thrower.....\$4,900
- NH 850 Round Baler.....\$2,900
- NH 489 Haybine.....\$5,900
- NH 495 Haybine.....\$3,900
- NH 411 Discbine.....\$7,500
- NH 462 Disc Mower.....\$3,500
- NH 477 Haybine.....\$2,900
- NH 1495 SP Haybine.....\$14,500
- NH 1495 SP Haybine, Diesel, Hydro Air.....\$19,500
- Hesston 1085 Mower Conditioner.....\$4,900
- Hesston 1060 Disc Mower Conditioner.....\$9,900
- IHC 990 Mower Conditioner.....\$1,900
- MF 7 Ft. 3 Pt. Hitch Dynabalance Mower.....\$1,250
- NH 258 Rake w/Dolly.....\$2,700
- NH 256 Rake.....\$1,800 & up
- NH 55 Rake.....\$1,350
- JD Rake 9 1/2" Rake w/Dolly Wheels.....\$1,650
- NH 155 Elevator 30 Ft. w/Motor.....\$1,600
- Deutz 17 Ft. Tedder.....\$2,900
- Vicon 17' Tedder.....\$2,900
- NH 353 Grinder Mixer.....\$4,900
- NH SP1880 Forage Harvester "Low Hrs".....\$19,000
- NH 892 Metalert Forage Harvester.....\$8,500
- NH 890 Forage Harvester.....\$4,900
- NH 718 Forage Harvester.....\$3,800
- NH S717 Forage Harvester.....\$1,900
- NH 770 Forage Harvester.....\$1,900
- NH 30 Blower.....\$1,250
- NH 27 Blower.....\$950
- Badger 16 Ft. Forage Boxes w/Roof & Tandem.....\$3,900/Each
- Schuler BF175 Feed Cart with Scales.....\$3,800
- Melroy 631 Skid Steer Loader.....\$6,500
- NH L35 Skid Steer Loader.....\$6,500
- NH 455 Skid Steer Loader.....\$10,500



We Ship parts everyday
- UPS - Fed. Express



CERESVILLE NEW HOLLAND

FORD NEW HOLLAND, INC.

8102 Liberty Road, P.O. Box A
Frederick, MD 21701

(301) 662-4197 • 1-800-331-9122

**Large Selection
NEW KUBOTAS
IN STOCK**

**KUBOTA
PARTS
IN STOCK**
Standing Ready
To Back You
All The Way

We Ship
 Daily