

**Lebanon Produce Auction**

Route 72 North  
Lebanon, Pa.  
Auction Tues., Thurs. 3 p.m.  
June 5  
Report Supplied by Auction  
STRAWBERRIES: 13.20 FLAT.  
SPINACH: .60-.70 BAG.  
SUGAR PEAS: .85-3.00.  
ASPARAGUS: 1.00 BUNCH.  
RADISHES: .90 BUNCH.  
RHUBARB: 1.00-2.00 BUNCH.  
POTATOES: .25/10 LBS., 2.75/20 LBS.,  
2.00-3.00 50 LBS.

VEGETABLE PLANTS: BY THE  
FLAT, LETTUCE 7.00; PARSLEY 3.00;  
ZUCCHINI 1.00; TOMATO PLANTS,  
SINGLE 1.00; CUCUMBER PLANTS,  
SINGLE 1.00.  
FLOWERS: BY THE FLAT, PETU-  
NIAS 4.00-6.00; IMPATIENS 5.00-7.50;  
DUSTY MILLER 5.00; MARIGOLDS  
3.00-5.00; GERANIUMS 4.00-5.00; PAN-  
SIES 4.00; SNAP DRAGONS 5.50; SING-  
LES, PETUNIAS .50-.55; IMPATIENS  
1.00-1.10; BEGONIAS 2.20; DUSTY  
MILLER 1.60; SNAP DRAGONS .50;  
GERANIUM POTS 2.00; IRIS 3.50;  
BLEEDING HEART PACKS 1.25-2.50.  
SHRUBS: AZALEAS 2.50-3.00.  
HANGING BASKETS: GERANIUMS  
4.50-7.50; IMPATIENS 3.00-5.00; PETU-  
NIAS 3.00-5.00; ASSORTED FLWOERS  
4.00-7.00.

**Eighty-Four Livestock**

Eighty-Four, Pa.  
Monday, June 5, 1995  
Report Supplied by Auction  
STEERS: SELECT, COUPLE HEAD  
59.00-60.50; STANDARD 50.50-55.50;  
UTILITY 50.00 DOWN.  
HEIFERS: STANDARD 51.00-54.00;  
UTILITY 50.50 DOWN.  
COWS: BREAKING UTILITY AND  
COMMERCIAL 37.50-44.50; CUTTER  
AND BONING UTILITY 36.00-38.50;  
CANNER AND LOW CUTTER  
32.00-35.00; SHELLS DOWN TO 30.00  
DOWN.  
BULLS: YG#1 50.50-57.00; YG#2  
46.00-49.50.  
FEEDER STEERS: 200-300 LBS.  
58.00-98.00, 300-500 LBS. 52.00-64.00,  
500-800 LBS. 50.00-62.50; HEIFERS  
200-300 LBS. 61.00-87.50, 300-500 LBS.  
50.00-67.00, 500-800 LBS. 45.00-62.50;  
BULLS 200-300 LBS. 60.00-90.00,  
300-500 LBS. 45.00-64.00, 500-800 LBS.

44.00-61.00.  
VEALERS: CHOICE 80.00-92.00,  
GOOD 69.00-77.50, STANDARD AND  
GOOD 60.00-68.00, UTILITY 55.00  
DOWN.  
FARM CALVES: HOLSTEIN BULLS  
#1 90.00-114.00; HOLSTEIN HEIFERS  
95.00-192.50; HOLSTEIN BULLS #2  
82.50-92.50; BEEF BULLS 72.50-99.00;  
BEEF HEIFERS 70.00-100.00.  
HOGS: US#1-2 200-240 LBS.  
32.00-38.25, 240-260 LBS. 37.00-38.25;  
US#2-3 260-300 LBS. 33.25-38.00.  
SOWS: UNDER 500 LBS. 25.00-29.50,  
OVER 500 LBS. 27.00-29.50.  
BOARS: 22.50-22.75.  
FEEDER PIGS: US#1-3 30 LBS. 20.00.  
SHEEP: HIGH CHOICE AND PRIME  
20-40 LBS. 81.00-88.00; 60-80 LBS.  
79.00-89.00; 80-100 LBS. 82.00-91.00;  
CHOICE AND PRIME 103 LBS. 86.00;  
FEEDER LAMBS GOOD AND CHOICE  
67.00-81.00; UTILITY 65.00 AND  
DOWN; EWES 21.00-35.00.  
GOATS: BY THE HEAD, LARGE  
38.00-63.00; MEDIUM 23.00-40.00;  
SMALL 15.00-24.00.

**Four States Livestock**

Hagerstown, Md.  
June 7, 1995  
Report supplied by Auction  
SLAUGHTER COWS: 70 HEAD.  
UTILITY 39.00-42.50; HIGH DRESSING  
TO 43.75; CANNERS 35.00-39.00; SHEL-  
LY 35.00 DOWN.  
BULLS: YG#1 1100-1400 LBS.  
50.00-51.00; YG#2 48.00-50.00.  
FED STEERS: HIGH CHOICE TO  
PRIME 1100-1400 LBS. 63.00-65.00, 1  
AT 66.75; FEW OVER 1450 LBS. TO  
62.75; FEW 1000-1100 LBS. 60.00-63.75;  
SELECT TO LOW CHOICE ALL  
WEIGHTS 57.00-60.00.  
FED HEIFERS: 1 SELECT 1200 LBS.  
AT 58.25; SELECT HOL TO 48.00.  
VEAL CALVES: 161 HEAD. LOW  
CHOICE 300 LBS. TO 81.00; CULLS  
85-110 LBS. 44.00-54.00; 50-80 LBS.  
40.00-48.00.  
FARM CALVES: HOLSTEIN BULLS  
10.00 LOWER. #1 90-120 LBS.  
95.00-110.00; #2 80-110 LBS.  
70.00-95.00; HOLSTEIN HEIFERS FEW  
95-120 LBS. TO 182.00; 75-90 LBS. TO  
152.00; BEEF X BULLS TO 97.00; HEIF-  
ERS TO 95.00.  
BUTCHER HOGS: US#1&3 220-260  
LBS. TO 38.75; FEW 300 LBS. TO 33.00.

STOCK CATTLE: STEERS, NO  
LIGHT WEIGHTS; 400-600 LBS.  
63.00-76.00; 600-800 LBS. FEW  
OFFERED.  
HEIFERS: 300-500 LBS. 55.00-65.00;  
500-700 LBS. 52.00-61.00.  
BULLS: 200-400 LBS. 70.00-80.00;  
400-600 LBS. FEW TO 60.00; 600-700  
LBS. TO 56.00; 1 LIM 985 LBS. AT 60.00.  
DAIRY REPLACEMENTS: FEW  
LARGE SPRINGERS TO 800.00.  
LAMBS: CHOICE 100-120 LBS. TO  
84.50; 80-90 LBS. 83.00-84.50; 40-70  
LBS. 74.00-88.00.  
SHEEP: 24.00-35.00; FEW TO 45.00;  
HEAVIES TO 19.00.  
GOATS: LARGE TO 85.00; MEDIUM  
TO 50.00; SMALL TO 23.00.  
PIGS AND SHOATS: BY THE HEAD  
FROM TESTED HERD, 25 HEAD 45-50  
LBS. 25.00-29.00.  
NEXT SPECIAL DAIRY SALE FRI-  
DAY, JUNE 16, 7:15 P.M. WE NEED  
OPEN HEIFERS ANY SIZE; 35 GOOD  
SPRINGERS PROMISED.

**New Wilmington Livestock**

NEW WILMINGTON, PA  
June 5, 1995  
CATTLE 188... PDA ...Compared to  
last Monday's sale...cows steady.  
STEERS: one Choice 1110 lbs. 64.50.  
HEIFERS: one Choice 1380 lbs. 61.50.  
COWS: Breaking Utility and Commer-  
cial 39.00-42.75, Cutter and Boning Utility  
34.00-39.75, Canner and Low Cutter  
32.00-36.00. Shells down to 27.00.  
BULLS: few Yield Grade No. 1  
1150/2100 lbs. 46.00-48.50, No. 2  
900/1975 lbs. 38.00-46.75.  
FEEDER CATTLE: STEERS: few  
Medium Frame No. 1 275/325 lbs.  
60.00-69.00, few Large Frame No. 2  
400/900 lbs. 42.00-49.50; HEIFERS:  
few Large Frame No. 2 350/675 lbs.  
54.00-57.00, few Medium Frame No. 1  
425/500 lbs. 62.00-67.00, few 500/875 lbs.  
45.00-54.00; BULLS: few Medium Frame  
No. 1 400/800 lbs. 43.00-53.00, few Large  
Frame No. 2 700/1000 lbs. 38.00-41.00.  
CALVES 215...VEALERS: Standard  
and Good 70/100 lbs. 30.00-50.00, Utility  
50/90 lbs. 15.00-22.50.  
FARM CALVES: No. 1 Holstein bulls  
120/135 lbs. 92.00-105.00, 90/120 lbs.  
110.00 125.00, No. 2 80/115 lbs.  
60.00-109.00; No. 1 Holstein heifers  
80/115 lbs. 60.00-109.00; No. 1 Holstein  
heifers 80/125 lbs. 172.00-195.00, No. 2  
75/135 lbs. 85.00-160.00. Beef cross bulls

and heifers 85/150 lbs. 85.00-110.00.  
HOGS 369...Barrows and gilts steady.  
BARROWS AND GILTS: US 1-2  
220/270 lbs. 39.85-40.75, few 41.75, US  
1-3 215/270 lbs. 38.50-40.10.  
SOWS: US 1-3 275/575 lbs.  
26.00-28.50, few Medium 250/300 lbs.  
25.00.  
BOARS: few 225/500 lbs. 20.00-26.00.  
FEEDER PIGS 24...Few US 1-3 20/80  
lbs. 27.50-32.50. --- per head.  
SHEEP 235...SLAUGHTER LAMBS:  
High Choice and Prime 45/100 lbs.  
80.00-102.50, Choice 50/100 lbs.  
70.00-83.00, 100/110 lbs. 68.00-80.00,  
Good and Choice 35/50 lbs. 60.00-79.00.  
SLAUGHTER LAMBS: 15.00-45.00  
mostly 23.00-33.00.  
GOATS 15...Few Medium & Large  
41.00-53.00, few Small 29.00-39.00, few  
Small Kids 19.00-31.00. --- per head.

**Lebanon Valley Livestock**

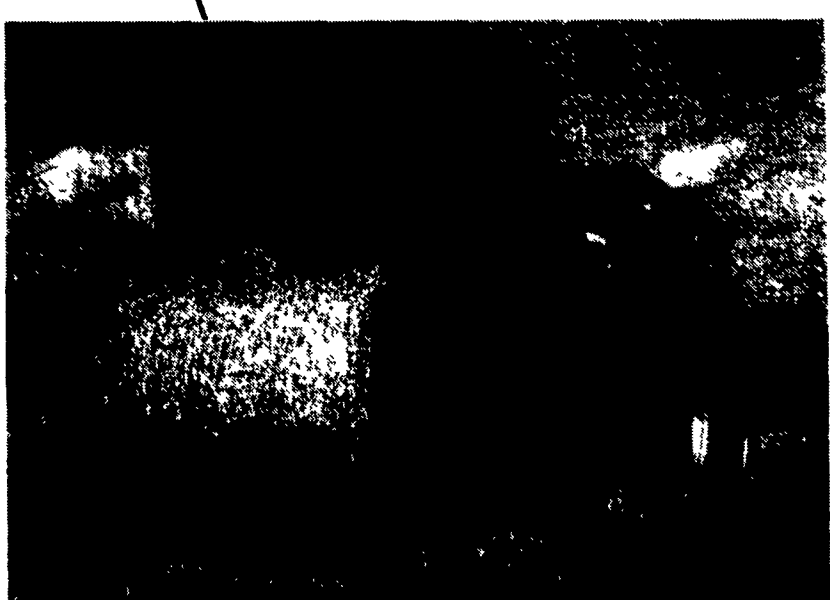
Fredericksburg, PA  
Tuesday, June 6, 1995  
Report supplied by Auction  
STEERS: 21 HEAD. COLORED  
SELECT 1015-1585 LBS. 55.50-61.25;  
HOLSTEIN CHOICE 1330-1520 LBS.  
56.75-59.25; SELECT 1330-1465 LBS.  
54.50-55.75; STANDARD 1165-1455  
LBS. 46.50-50.75.  
HEIFERS: 14 HEAD. CHOICE  
1010-1175 LBS. 59.75-63.25; SELECT  
940-1140 LBS. 54.25-58.50.  
COWS: 86 HEAD. BREAKING UTILI-  
TY AND COMMERCIAL 42.50-46.00,  
CUTTER AND BONING UTILITY  
40.00-42.50, CANNER AND LOW CUT-  
TER 36.00-39.75, SHELLS 35.00 AND  
DOWN.  
FEEDER CATTLE: 6 HOLSTEINS  
560-590 LBS. 54.50-62.00.  
BULLS: 2 HEAD. YG#2 900 AND 1580  
LBS. 45.50 AND 46.75.  
CALVES: 161 HEAD. CHOICE 80-100  
LBS. 40.00-55.00; GOOD 75-95 LBS.  
35.00-42.00; UTILITIES 35-45 LBS.  
30.50-40.00; #1 HOLSTEIN BULL  
CALVES 95-125 LBS. 100.00-112.00; #2  
HOLSTEIN BULL CALVES 90-110 LBS.  
92.00-102.00; #1 HOLSTEIN HEIFER  
CALVES 85-115 LBS. 150.00-175.00; #2  
HOLSTEIN HEIFER CALVES 65-75  
LBS. 67.00-95.00; BEEF X CALVES  
90-100 LBS. 90.00-127.00.  
HOGS: US#1-2 216-262 LBS.

38.50-39.75; #1&3 210-240 LBS.  
36.00-37.75.  
SOWS: #1&3 460-590 LBS.  
27.00-29.50; #2&3 365-435 LBS.  
23.00-25.50.  
BOARS: 1 HEAD. 300 LBS. AT 22.00.  
LAMBS: 9 HEAD. CHOICE 45-65  
LBS. 70.00-78.00; GOOD AND CHOICE  
80 LBS. 60.00-72.00.

**Friend's Stockyard Inc.**

Accident, Md. 21520  
Report Supplied by Auction  
June 5, 1995  
STOCK BULLS AND STEERS  
(200-500 LBS.) 55.00-80.00.  
STOCK HEIFERS: 55.00-70.00.  
SLAUGHTER STEERS: GOOD TO  
CHOICE 57.00-64.25, MEDIUM TO  
GOOD 56.00-60.00, HEAVY CHOICE  
OVER 1450 LB. 55.50-60.00.  
HOLSTEIN STEERS: HEAVY  
50.00-55.00, LIGHT 42.00-50.00.  
SLAUGHTER HEIFERS: GOOD TO  
CHOICE 58.50-62.75, MEDIUM TO  
GOOD 53.50-58.00.  
BULLS: HEAVY 44.00-55.00, LIGHT  
42.00-53.00.  
COWS: FEW HIGH DRESSING UP TO  
46.00, UTILITY (HOLSTEIN)  
37.00-45.00, COMMERCIAL TO GOOD  
32.00-39.00, CULL COWS 30.00 AND  
DOWN.  
VEALS: GOOD TO CHOICE  
70.00-88.00, MEDIUM TO GOOD  
50.00-69.00.  
BOB CALVES: 50.00 AND DOWN.  
HOLSTEIN BULL CALVES —  
RETURN TO FARM (90 TO 120 LB.)-  
85.00-105.00.  
HOLSTEIN HEIFER CALVES —  
RETURN TO FARM (100 TO 120 LB.) -  
UP TO 170.00.  
BEEF CROSS CALVES — RETURN  
TO FARM UP TO 110.00.  
HOGS: TOP QUALITY 39.50-40.25,  
HEAVY 37.50-39.00, LIGHT  
30.00-37.00.  
SOWS: 18.00-24.50.  
MALE HOGS: 15.00-24.00.  
LAMBS 65.00-80.00; FEEDER  
LAMBS 55.00-74.50.  
SHEEP 25.00-32.00.  
LIVESTOCK PRICES ARE ALL  
GIVEN PER HUNDRED WEIGHT!

**DEUTZ FAHR Round Balers**



**Quality Equipment To Preserve Quality Crops.**

Deutz-Fahr round balers have established a worldwide reputation for innovation, durability and performance.

**Here Are Just A Few Reasons Why....**

**Standard Equipment on all Balers include:**

- Hydraulically controlled pickup with dual pneumatic gauge wheels, baffle plate and galvanized scrapers.
- Efficient pickup tine spacing and open throat design to gently handle even large windrows without plugging.
- Internally re-enforced ribbed profile rollers, (17 on GP230, 22 on GP250) are designed to eliminate wedging and wrapping in wet crops, and reduce leaf loss in dry material. Ribbed profile rollers are less aggressive than large "dimpled" sheets.
- Driven roller shafts are splined, not keyed, for long life. No external chains and rollers bearings to replace either!
- Extra sturdy fixed chamber design:  
GP230 makes 4x4 bales  
GP250 makes 4x5 bales
- Central control, tractor mounted "Pilot Box" for electronic

- and hydraulic functions with both audible and visual indications.
- Single acting hydraulic remote is all that's needed for all hydraulic functions.
- Automatic chain lubrication system.
- Fully automatic "twin-fix" twine tying system, the fastest in the industry. (14 seconds!) (Optional net wrap attachment can be added any time)
- Bale ejector with extendable ramps.
- Safety light package.
- Wide angle PTO shaft.
- Wide, heavy ply tires.

"Opticut" models available to increase high moisture bale density and bale feedability.

All these features translate into outstanding performance and long life.

For Further Information and your nearest dealer contact:



**CUMMINGS and BRICKER, Inc.**  
Wholesale Distributors

100 Stover Drive  
Carlisle, PA 17013  
717/249-6720

100-120 Lehigh Ave. • P.O. Box 928  
Batavia, New York 14021-0928  
716/343-5411

**FOR SALE - MANURE**  
20-25 ton trailer loads  
\$6 to \$8/per ton depending  
on distance  
**VINTAGE SALES STABLES, INC.**  
Paradise, PA 17562  
215-458-5060 - 717-442-4181  
L. Robert Frame, President

**LEATHERMAN**  
TOOL GROUP, INC.  
The Perfect Father's Day Gift  
**LEATHERMAN®** remains the leader in high quality compact multi-purpose tools. All tools are manufactured with uncompromising quality and backed by a 25 year warranty. They are made in the U.S.A. of 100% stainless steel.  
**MARTIN** HARDWARE & EQUIPMENT CO. INC.  
Rt. 501, 1 1/2 Mile South of Schaffersstown, PA  
PHONE: (717) 948-8817  
Mon, Wed, 7:30-5, Sat. 7:30-4, Tue, Thur, Fri 7:30-8  
We Ship UPS - Discover - Visa - MasterCard