

South Jersey Beef Show Draws 4-H'ers

The South Jersey Open Beef and Heifer Show was held at the Gloucester County 4-H Fairgrounds recently.

The show was judged by Daryl Bomgardner of Annville, Pa. Daryl was a former 4-H member with extensive experience raising and showing beef cattle and hogs. He is a junior animal science major at Penn State and a member of the livestock judging team.

This was the seventh year the South Jersey Open Beef Show was held.

4-H members from north and south Jersey paraded steers and heifers before judge Daryl Bomgardner.

The results of the heifer show are as follows:

Grand Champion Angus Heifer: Buck Run Mayflower 428 shown by Crystal Dixon of Hunterdon County, N.J.

Reserve Champion Angus Heifer: Grandview Ellen Erica 5164 shown by Brittany Dixon of Hunterdon County, N.J.

Grand Champion Hereford Heifer: First Edition shown by Shawn Burger of Gloucester County, N.J.

Reserve Champion Hereford Heifer: SHR Blazer Domina D186 exhibited by April Daley, Hunterdon County, N.J.

Grand Champion Simmental Heifer: Mo Ariel shown by Grant Coleman, Salem County, N.J.

Grant's heifer was also the overall grand champion heifer of the show.

Shawn Burger's champion hereford heifer was the overall reserve champion heifer of the show.

Results of the steer show are as follows:

follows:

Grand Champion Angus Steer: Marcate exhibited by Rose Marie Sylvester, Gloucester County, N.J.

Reserve Champion Angus Steer: April Calf Black Magic; Ex. by Crystal Dixon, Hunterdon County, N.J.

Grand Champion Crossbred Steer: March Calf Ship; Ex. Tim Coleman, Salem County N.J.

Reserve Champion Crossbred Steer: March Calf Leroy; Ex. Grant Coleman, Salem County, N.J.

Grand Champion Hereford Steer: April Calf SA Prospect SA59; Ex. April Daley, Hunterdon, County, N.J.

Grand Champion Simmental Steer: April Steer Bubba; Ex. Tom Capecci, Gloucester County, N.J.

Reserve Champion Simmental Steer: Silver Socks; Ex. Amanda Sylvester, Gloucester County, N.J.

The overall grand champion of

the show was the grand champion crossbred steer exhibited by Tim Coleman of Salem County, N.J.

The overall reserve grand champion of the show was the reserve champion crossbred steer exhibited by Grant Coleman of Salem County, N.J.

The results of the fitting and showmanship contests are:

Junior Champion: Kevin Bishop, Salem County, N.J.

Reserve Champion: Brittany Dixon.

Intermediate Champion: Crystal Dixon.

Reserve Champion: Shawn Burger.

Senior Division Champion: Grant Coleman.

Reserve Champion: Steve Burger.



Grand champion Hereford steer, exhibited by April Daley.



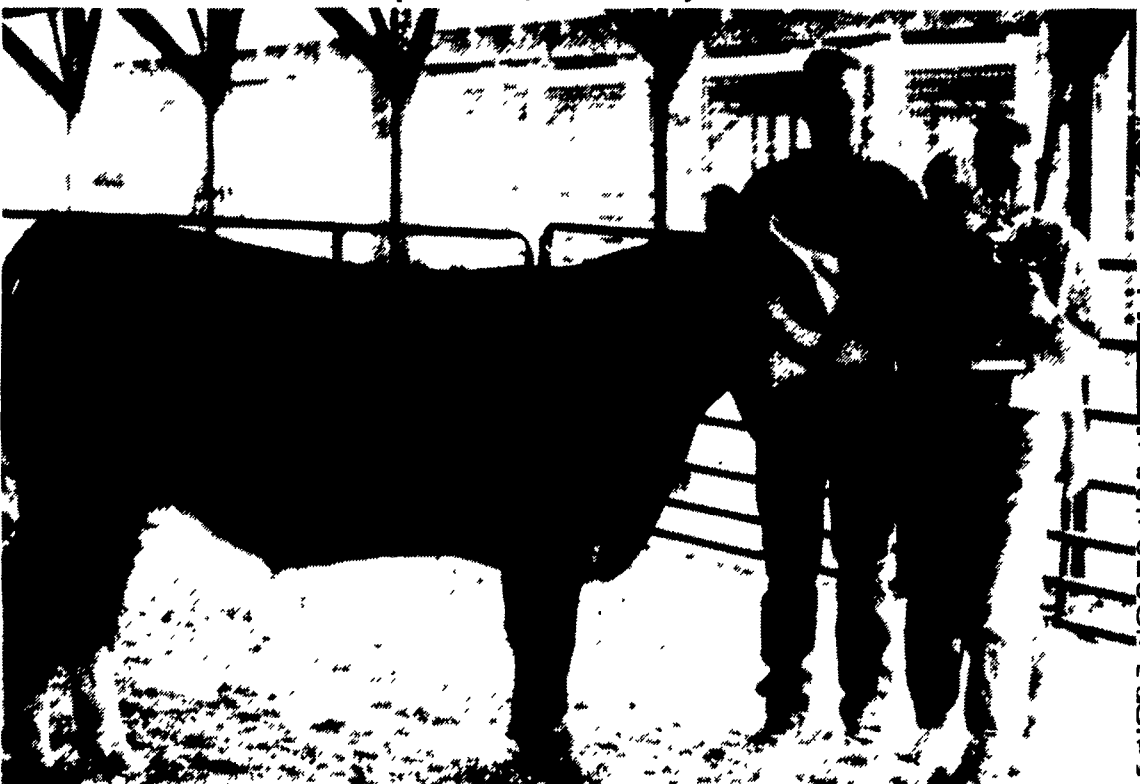
Grand champion simmental steer, exhibited by Tom Capecci.




Grand champion heifer exhibited by Grant Coleman.



Grand champion steer, exhibited by Tim Coleman.



Reserve grand champion steer, exhibited by Grant Coleman, pictured with Judy Ballere, Gloucester County 4-H agent and show judge, Daryl Bomgardner.



A LESSON WELL LEARNED...

Lancaster Farming's CLASSIFIED ADS GET RESULTS!

Phone: 717-394-3047
or 717-626-1164

BUY, SELL, TRADE OR RENT THROUGH THE CLASSIFIED ADS

PHONE: 717-626-1164 or 717-394-3047
FAX 717-733-6058

Mon., Tues., Wed., Fri. 8 AM to 5 PM; Thurs. 7 AM to 5 PM

<p>1 FARM EQUIPMENT</p> <p>1070 Case late model cab and air, good rubber, call evenings 717/687-7090.</p> <p>1100 MF Tractor; 8' MF Grain Drill; 2 Row Oliver Potato Digger. Excellent Condition. Reasonable. (609)697-1870.</p> <p>1460 IH combine w/ mudhog, 963 corn head, good condition. Call (607)243-5136.</p> <p>14.9x26 6 ply tire and wheel, new but weather cracked, \$125 a pair; 14.9x26 6 ply tires and wheel, 1/2" tread plus</p>	<p>weather cracked, \$75 a pair. 717/682-8961.</p> <p>15A JD flail chopper, \$375; Running gear, 4 ton, \$150; IHC off set disc, on wheels, 7', 22" diameter, \$325. 610-488-0723.</p> <p>15' Tye no-til drill, East Chester Co. Phone early mornings, (610)539-1198.</p> <p>1937 AC Tractor-Model W-C Runs. \$800; 1928 McCormick Deering Tractor Model 30-15 with Steel Wheels, Cast Iron Steering Wheel. Restorable. \$700. (717)463-2347.</p> <p>1952 JD A six speed, new lights and paint, \$1,250 OBO. Orange County, NY, evenings (914)726-3631.</p>	<p>1954 Ferguson TO-30 Tractor, Very Good Shape. \$3850; 1979 F-350 Stake Body, Good Condition, Good Hay Truck. \$3500; E.R.Schwartz Loader Off M.F. 165 \$1500. All Prices OBO. Call (717)473-1943.</p> <p>1958 620 JD, 3pt hitch, new rear tires, new paint, nice tractor; 1956 JD 520, nice original good rubber; 1952 Farmall Super MTA, new paint, good rubber; 855 NH round baler, field ready. 717-546-8784.</p> <p>1970 INT. dump truck w/10' box, hoops, tarp and hydraulic fertilizer auger, mounted on rear, used this spring \$2000. firm; 717-784-0111 day; 784-6359 evenings.</p>
---------------------------------------------------------------------------------------------------------------------------------------------------------------------------------------------------------------------------------------------------------------------------------------------------------------------------------------------------------------------------------------------------------------------------------------------------------	-------------------------------------------------------------------------------------------------------------------------------------------------------------------------------------------------------------------------------------------------------------------------------------------------------------------------------------------------------------------------------------------------------------------------------------------------------------------------------------------------------------------------------------------------------------	-------------------------------------------------------------------------------------------------------------------------------------------------------------------------------------------------------------------------------------------------------------------------------------------------------------------------------------------------------------------------------------------------------------------------------------------------------------------------------------------------------------------------------------------------------------------------------------------------