

POLE BUILDINGS, TRUSSES

GARAGES - COMMERCIAL BUILDINGS - HORSE BARNs - STORAGE BUILDINGS

For FREE ESTIMATES Call

MUSSER & ASSOCIATES, INC.



245 Fetterville Rd.
East Earl, PA
17519

1-800-331-1875 717-354-7561

METAL BUILDINGS

Commercial • Industrial • Agricultural



Barns and Riding Arenas
Mini Storage
Sports Complexes
Warehouses / Office Buildings

Your Building Delivered in ONLY FOUR WEEKS

Call For Monthly Specials (610)690-2977

P & B CONSTRUCTION

Put on Roofing & Siding with these Affordable Prices!

Prices Per Sheet 36" Coverage, 29 GA.

150 Pcs. 12' Silo Blue CD.....	\$13.20
155 Pcs. 14' Silo Blue.....	\$16.80
120 Pcs. 18' Silo Blue.....	\$21.60
220 Pcs. 20' Silo Blue.....	\$24.00
120 Pcs. 22' Silo Blue.....	\$26.40
250 Pcs. 24' Silo Blue.....	\$28.80
100 Pcs. 26' Silo Blue.....	\$31.60
154 Pcs. 20' 3" Red.....	\$24.30
120 Pcs. 20' 3" Pebble Beige.....	\$24.30
156 Pcs. 20' 3" Brown.....	\$24.30
24 Pcs. 14' Galv.	\$12.60
46 Pcs. 16' 2" Galv.	\$14.55
98 Pcs. 12' White CD.....	\$14.40
320 Pcs. 16' 3" White Liner.....	\$20.30
90 Pcs. 16' Quaker Gray.....	\$19.20
62 Pcs. 20' 1" Tan.....	\$24.00
75 Pcs. 24' Tan.....	\$28.80
41 Pcs. 24' Gold.....	\$28.80
120 Pcs. 20' Gold.....	\$24.00
100 Pcs. 12' Gold CD.....	\$14.40
61 Pcs. 20' Black.....	\$24.00
44 Pcs. 16' Black.....	\$19.20
34 Pcs. 24' Slate Blue.....	\$28.80
90 Pcs. 20' Slate Blue.....	\$24.00
46 Pcs. 14' Slate Blue.....	\$16.80
76 Pcs. 12' Slate Blue.....	\$14.40
33 Pcs. 20' Forest Green.....	\$24.00
90 Pcs. 16' Forest Green.....	\$19.20
28 Pcs. 14' Ever Green.....	\$16.80
106 Pcs. 16' Ever Green.....	\$19.20
70 Pcs. 18' Ever Green.....	\$21.60
44 Pcs. 24' Ever Green.....	\$28.80
300 Pcs. 2 1/2" Corr. White 20'6" Long 27 1/2" Wide..	\$16.40
250 Pcs. 28"x60" - Rock Face Stone - Siding Galv. Painted Brown.....	\$3.50 ea.

Ridge Cap, Rake & Corner

194 Pcs. 10' Ridge Cap Silo Blue.....	\$5.00
75 Pcs. 10' Rake & Corner Silo Blue.....	\$5.00
140 Pcs. 16' Rake & Corner Lt. Blue.....	\$7.00
130 Pcs. 16' Rake & Corner Gray.....	\$8.00
46 Pcs. 16' Rake & Corner Gold.....	\$8.00
180 Pcs. 10' 6" Ridge Cap Gold.....	\$5.00

The Above Items Are #1, Discontinued Colors, Seconds, Close Outs, Etc. - Call!

A.B. MARTIN ROOFING

Roofing - Siding & Supplies
150 Slate Road Ephrata, PA 17522
(717) 445-6885 (717) 354-5076

6 DAIRY EQUIPMENT

4 BUILDINGS AND SUPPLIES

STEEL BUILDINGS



FREE

Full Color Buildings Systems Guide

Design • Development • Turnkey
Factory Deals — Save
Mini Storage • Commercial • Ag

\$500 DISCOUNT ON CONSTRUCTION OF BUILDING PURCHASED BY MARCH 1. WITH THIS AD

A-1 STEEL BUILDING, INC.
410-876-9762

5 GRAIN EQUIPMENT

Behlen corn cribs, 3000bu., 9 for sale, 2 immediate, 1 year old, \$1500/each. 412/586-6816.

Specializing in building and dismantling grain bins and equipment. Built-Rite Enterprises. 717/336-6215 David Zimmerman.

Will dismantle and set up used grain bins and equipment. Can furnish new hardware and accessories. Sones Grain Systems 717-584-2282



Grain Bins
Grain Dryers

Hance Corp.
Elevators

Sones Grain Systems
Jim & John

Check Our Prices Before You Order
We Personally Install Everything We Sell
717-584-2282

RR7, Box 470
Muncy, PA 17756

Sukup
Stirring Machines
Grain Cleaners

6 DAIRY EQUIPMENT

100 cow Herdex System for sale; Zimmerman self-locking cow stalls. 717-898-7689.

13" A.O Smith harvester belt feeder for parts; Allenville 9-unit calf condo; 20 elevated calf stalls, 29"x48" S.S. legs, 5 per unit, would make great dog kennels, 10 ton Stoltzfus feed bin; Chore time flex auger system, 3" diam. 90' 7-drops; 215/855-8190.

2000G Surge w/ compressor, \$6,000.
1000G Zero w/ compressors, \$3,000.
310G Sunset. (717)286-5306.

37' triple pass milk tube cooler, \$3,500. Midstate Dairy Systems, DeRuyter, NY 13052, (315)852-9591.

3 Nupulse milkers on 60lb. pails, Delaval 76 milker pump 3hp, 2" PVC vacuum line, 36 Westfalia stallcock, Kesco dumping station, Bender washer, 1 1/2" glass pipeline, StaRite receiver, Pomperer motor 717/653-2394.

4 Delaval Super Flow View Milkers, magnetic pulsation. Must Sell! Will consider separating. Lanc. Co. 717/768-3998.

WHEELING Centurydrain™

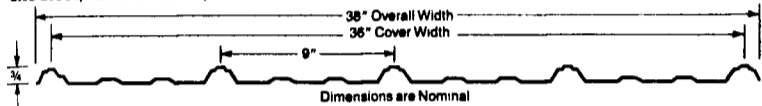
A country slicker with an in-town attitude.

Tough Centurydrain is a slick looking roofing and siding that'll do a job for you in rural applications, and one that you can use for in-town or suburban structures without apology.

Centurydrain is packed with quality features: 100% American-made high tensile steel, full 36" cover, an unbeatable

drain channel, and snug side laps. Your building stays tight, dry, and lasts through years of punishing wind and weather.

Centurydrain is an economical, thoroughly practical building material, a slick choice for rural, suburban, and commercial applications.



Centurydrain quick specs

- Full-hard 90,000 psi galvanized steel construction
- Popular 38" width (36" cover)
- Available in galvanized G-90 and in ten rich, 20-year warranted baked-on silicon polyester enamel colors
- Three quarter inch major ribs on 9" centers along with prominent intermediate ribs to provide strength, snug fit and clean lines
- 29 gauge
- Also available, 28 gauge, 2 oz. galvanized Wheeling Seal of Quality—heavier, galvanized coated sheet for extra wear and long life. We're so confident of its durability that we offer this product's own special 20-year limited warranty

Drain Channel

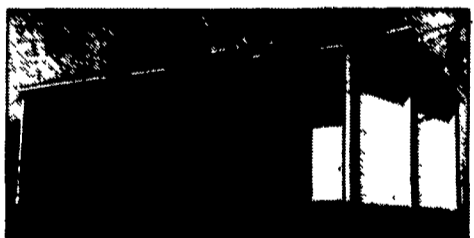
The exclusive leakproof drain channel adds strength at each joint; prevents capillary action; stays weather tight, interiors stay dry, snug



A.B. MARTIN ROOFING

Roofing • Siding & Supplies
150 Slate Road Ephrata, PA 17522
(717) 445-6885 (717) 354-5076

Side with Alumax ALU-TUFF Steel



When you put up a building, you expect it to be attractive and to last. A building constructed with ALU-TUFF will meet those expectations. That's because ALU-TUFF is made using top-quality materials, super-tough protective coatings, and a unique rib design that's both functional and attractive.

Years from now when other buildings are starting to show their age, your building will still look good.

- **A STRONG PROFILE**
High 3/4-inch ribs on nine-inch centers give ALU-TUFF exceptionally high spanning properties for its weight and thickness, while stiffening ribs in flat areas prevent rippling.
- **MADE TO LAST**
To keep Alu-Tuff working hard and looking good for years to come, we protect it with an oven-cured system of four different coatings.
- **A GREAT LOOKING PANEL**
You don't have to sacrifice good looks to get a tough steel panel.
- **MORE QUALITY FEATURES**
Each ALU-TUFF sheet is 38 inches wide to provide 36-inch coverage. That's wide enough to minimize the number of side laps, yet narrow enough to be easy to handle.

CALL FOR SPECIAL DISCOUNTS



717-776-5951 505 STEELSTOWN RD. - NEWVILLE, PA 17241

Smucker Construction

135 Churchtown Road
Narvon, Pa. 17555

Call us today for all your building needs
717-768-8606



40'x200' Dairy Barn
128' Helfer and dry cow barn with pit and slatted floor

