

# IPM Field Workshop June 21

Lancaster Farming, Saturday, June 3, 1995-C13

LEESPORT (Berks Co.) — Potato leafhopper is one of the most destructive pests in field crops in southeast Pennsylvania. New stands of alfalfa are especially vulnerable.

A field workshop to train agricultural professionals in integrat-

ed pest management (IPM) techniques is scheduled on June 21 in Berks County. The goal of the workshop is to increase the skill of professional agriculturists in applying IPM principals when managing the pest.

Dennis Calvin, Department of

Entomology, Penn State Cooperative Extension, and Mena Hautau, extension agent, will lead the workshop. Participants will actually scout an alfalfa field, identify the insect, and make decisions regarding management.

The National Resource Con-

servations Service will also present an overview of the Water Quality Incentive Program (WQIP) in Berks County for participants.

Registration for the workshop is due by Monday, June 19. No fee will be charged.

For more information about the IPM Workshop for Ag Professionals, contact Berks County Cooperative Extension, Berks County Ag Center, P.O. Box 520, Leesport, PA 19533, (610) 378-1327.

June is dairy month

IN STOCK

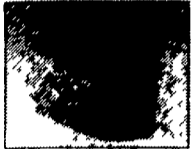
## RYDER SUPPLY CO.

539 Falling Spring Road  
P.O. Box 219  
Chambersburg, PA 17201-0219  
Phone 717-263-9111

### Thrifty King™

#### ENERGY FREE UNITS

The Oldest Company With Electric & Energy-Free Fountains... The Winter of '94 Was Problem Free!



Model CT1 Cattle One-Drink  
Part No. 16271  
28" x 20 1/2" x 19"  
Capacity: 50 cattle



Model CT2 Cattle Two-Drink  
Part No. 16299  
42 1/2" x 24" x 19"  
Capacity: 100 cattle



Model HG2 Hog Two-Drink  
Part No. 16298  
31 1/2" x 24 1/2" x 9"  
Capacity: 80 hogs



Model HG3 Hog Three-Drink  
Part No. 16299  
31 1/2" x 20" x 9"  
Capacity: 80 hogs



Model HG4 Hog Four-Drink  
Part No. 16280  
31 1/2" x 31 1/2" x 9"  
Capacity: 160 hogs



Electric-free fountains that live up to the Ritchie® name.



Model CT4 Cattle Four-Drink  
Part No. 16300  
42 1/2" x 35" x 19"  
Capacity: 200 cattle



RELAX...

IN STOCK Ritchie®

WATERS 'EM RIGHT

Ask about The Constant Flow Water Master 90 - ALL UNITS IN STOCK

ALSO AVAILABLE

Ritchie WATER THAT WON'T QUIT.



THE CHEAPEST THING TO GIVE YOUR COWS... WATER

FOR MORE MILK!!!

Give your cows lots of water from Ritchie Fountains

Water Is Cheaper Than Feed!



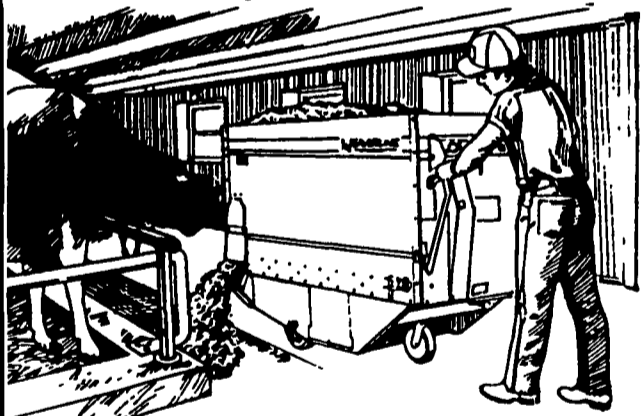
Recapping Your Ritchie Fountains Makes Sense... And Saves Money!



3 Cattle Fountain  
Designed for big service in small pens. Waters up to 100 head.  
Part No. 11255  
17" x 28 1/2" x 26" high  
Electric (530W CSA approved) or Gas

2AC Multi-Purpose Fountain  
Waters calves, sheep and goats. Perfect for box stalls, small lots or fence-lines.  
Waters up to 40 cattle/100 calves.  
Part No. 12295  
10" x 24" x 18" high  
Electric (288W CSA approved)

## CUT FEEDING TIME WITH WEAVERLINE SILAGE CART



Be Sure To Consider Weaverline Silage Cart WHY?

- Feeding is Right At Your Fingertips
- Improves Dairy Feeding
- You Will Enjoy Feeding Cows With The Easy Quiet & Fast Weaverline Cart... Many Sizes Available

- ★ 20% Larger Than The "Best Seller" Model 430
- ★ Larger Size For The Larger Herd
- ★ Full 36 Bushel Capacity
- ★ Extension Side Kit Available To Increase The Capacity On All Models.

NOW 4 SIZES AVAILABLE

420 - 424 - 430 - 436

AMERICAN QUALITY AT AFFORDABLE PRICE

### THE FUERST FLEXIBLE TINE HARROW

The leader for more than 30 years

AERATES PASTURES to stimulate growth and improve moisture penetration while scattering droppings  
PREPARES SOIL for over seeding without disturbing existing growth

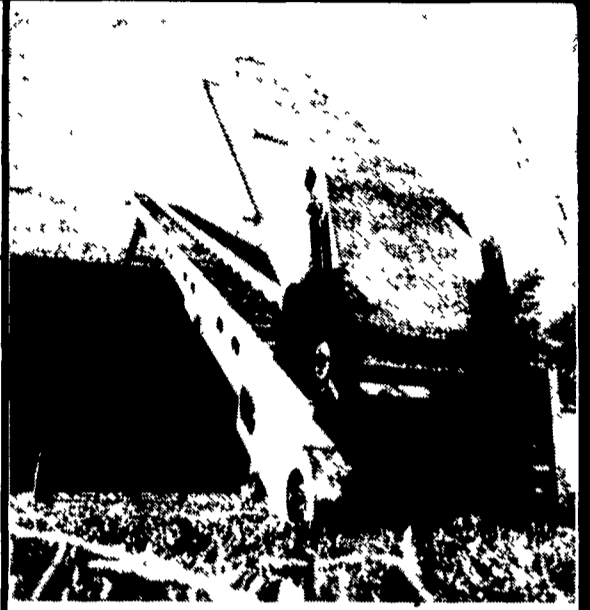
INCORPORATES HERBICIDES in one pass behind drill or cultivator  
SHREDS TRASH as it prepares and levels seed beds ahead of no till planting

OPTIONAL HARROW CART folds to a narrow width for easy transporting

IN STOCK



THE MOST VERSATILE TOOL ON THE MARKET



BUILT LIKE YOUR FARM DEPENDED ON IT.

## MY-D HAND

BALE ELEVATORS CONVEYORS PORTABLE ELEVATORS



- + 1" square 17 ga. steel tubing used throughout (side panel tubes and bale floor tubes).
- + Every panel X-braced with 1/2" round steel
- + Ball Bearings used throughout.
- + No 55 Chain with bale spikes every 18 inches

BASIC ELEVATOR is 18 long 24 wide and comes complete with Speed Reduction and Motor Mount. Elevator can also be used as a self-powered mow conveyor. Inclined elevators are self supporting up to 54'

BASIC CONVEYOR is 18 long 24 wide and drives from top elevator shaft. Comes complete with Roller, Chain, Connector Drive, Bale Guides and Connector Plates. Can be quickly connected to or disconnected from elevators.

FULL LINE OF ACCESSORIES include 6 to 9 midsections for additional length of either unit.

IN STOCK Pound for Pound, Dollar for Dollar MY-D HAND Gives You More

ALSO WE HAVE AUGER IN STOCK!

### FUERST BROADCAST SEEDER-FERTILIZER SPREADER

EXCELLENT QUALITY - OPERATIVE SIMPLICITY COMPETITIVE PRICE

- Our steel hopper and tubular steel frame are designed for long life.
- Optional plastic hopper for corrosion resistance.
- Three spreading patterns to select from. Simply operate levers to obtain an accurate and uniform spread in the desired direction.
- Spreading disc with 4 adjustable vanes to assure maximum efficiency and uniform spread for different types of fertilizer and seeds.
- HEAVY-DUTY GEARBOX, OIL PRESSED STEEL HOUSING.

