

You ask we answer

This column is for readers who have questions but don't know whom to ask for answers.

"You Ask—You Answer" is for non-cooking questions. When a reader sends in a question, it will be printed in the paper. Readers who know the answer are asked to respond by mailing the answer, which will then be printed in the paper.

Questions and Answers to this column should be addressed to You Ask—You Answer, Lancaster Farming, P.O. Box 609, Ephrata, PA 17522. Attention: Lou Ann Good.

There's no need to send a SASE. If we receive an answer to your question, we will publish it as soon as possible.

QUESTION — Lois Burkholder, Washington Boro, wanted to know why her iris does not bloom.

QUESTION — George Ueltzen, Saylorsburg, wanted to know how to get rid of carpenter bees in his barn and out buildings, which are full of holes. Nothing but a tennis racket seems to stop them.

QUESTION — Lois Burkholder, Washington Boro, wanted to know rhubarb goes to seed as soon as it starts growing. Note: Read the answer to growing thick stalks in the answer section. Perhaps those suggestions will solve the problem.

QUESTION — Margaret Diamond, Kunkletown, would appreciate information on hair embroidery, instructions on the craft, items owned with a history, or items for sale. Send it to 80 Evergreen Lake, Kunkletown, PA 18058-9329.

QUESTION — Joan Francisco, Stroudsburg, would like to know where to purchase oil of cassia, used in Italian cooking.

QUESTION — Norma Jean Yankey, Mt. Solon, Va., has a Burpee pressure canner Model #AR 1525. The screw in the control valve is weak and the pressure will not register properly. Does anyone know where she can find another control valve. The canner is approximately 40 years old.

QUESTION — Scott Strosnider of Stephens City, Va., would like any information available on old marbles and also where he can purchase them in bulk or large amounts.

QUESTION — Yvonne Lawrence, Newburgh, N.Y., would like to know where to purchase a rhubarb and soda mixture used for indigestion. She used to purchase it in a pharmacy but finds the New York pharmacies don't stock it anymore.

QUESTION — Mrs. William Pierce, Palmyra, would like to know where to purchase antique two bottom dishes for crock-type chicken water fountains. Must be white with 10-inch top and 8-inch bottom.

(Turn to Page B17)

P. L. ROHRER & BRO., INC.

Supplying The Seeds and Products That Help Grow the Feeds for Dairymen

JUNE IS DAIRY MONTH



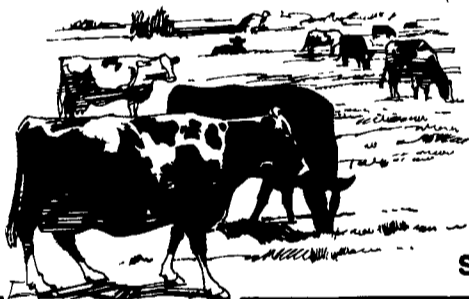
AMERICA'S *Alfalpa*
The brand of opportunity.™

ROHRER BRAND SOYBEANS

CROP PROTECTANT PRODUCTS

Store Hours
Monday-Friday 7:30-5 PM
Saturday 7:30-12 Noon

Smoketown, PA 17576 PH. 717-299-2571



JUNE IS DAIRY MONTH

One Mile East of Blue Ball on Rt. 23



Phone 717-354-8222

Don't Miss

Our Specialty Nights!

Monday/Del Monico Steak
Tuesday/Seafood • Wednesday/Prime Rib
Thursday/Grilled Marinated Chicken Breast
Friday/Orange Roughy - Fried Shrimp

Open Mon-Sat 5-8 Closed Sunday
717-354-8222

The heavy-duty BlueMax® stands up to high-powered blowers.

If you push your high-capacity silo filling equipment to the limit, or use a custom filler who does, you're going to need the heavy-duty strength of Level-Flo's BlueMax® Multi-Flo® silage spreader. It has heavier metal at wear points and is reinforced all around to give you years of dependable service.

And because it's a Multi-Flo, the BlueMax will pack your silo tight, right to the top. Carefully engineered Multi-Flo silage spreaders have few moving parts. They are the first choice of farmers because of extreme efficiency and high reliability.



The BlueMax
HEAVY-DUTY SILAGE SPREADER FROM LANCASTER LEVEL-FLO

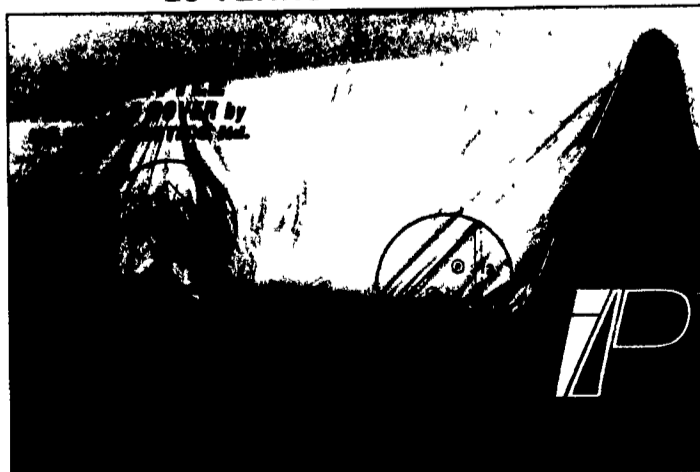


Available Thru Your Local Silo Dealer

BALE STACK COVERS

Heavy Duty

- 20 YEARS EXPERIENCE -



FOR PIPE HOLD DOWN

FOR ROPE or PIN HOLD DOWN

2" wide webbing loops (holding over 500 Lbs / loop) sewn into 5 layers of silver / black, U.V.I. treated super tough poly -fabric.

Two spur eyelets each corner in 12" gussets, plus eyelets around perimeter at 3' o/c in 9"; 5 layer gussets (for uneven stacks).

The Versatility You Require in Hold Down Systems!

FOR YOUR NEAREST DEALER CALL:

1-800-387-7765 (USA East)