

**Delmarva
Broiler**

EDISON, NJ
MAY 31, 1995

Movement of ready-to-cook whole birds was fairly good. Seller offerings were generally adequate. Live supplies were moderate with weights ranging light to heavy. Processing schedules were very heavy. Less than trucklot asking prices were unchanged at 53 to 64 cents. Trade sentiment was fully steady to instances firm. In

the parts complex, all items were generally steady to fully steady.
ESTIMATED SLAUGHTER OF BROILER/FRYERS IN DELMARVA (000) ESTIMATED ACTUAL AVG. WEIGHT ACTUAL AVG. WEIGHT 05/31 05/29 05/29 05/24 05/22 2,352 (A) (A) 2,427 4.83 (A)-Not reported to avoid disclosing individual operations.
*BROILER/FRYER CURRENT NEGOTIATED PRICES FOR IMMEDIATE DELIVERY INCLUDES MOSTLY MULTIPLE-DROP SHIPMENTS OF

BRANDED AND WING TAGGED TO NEW YORK CITY FROM DELMARVA
BRANDED
U.S. GRADE A
RANGE 50-65
WEIGHTED AVERAGE 54.54
NO. OF BOXES 13,005
*9 of 9 plants reporting.
PREPARED: 31-MAY-95 11:42 AM E
JRF-PSJ/es
For additional information, please call (908) 985-8880.

Leicester Farming, Saturday, June 3, 1995-A5

Belleville Poultry

Belleville, Pa.

Wednesday, May 31, 1995

Report supplied by Auction

Geese: 2.50-3.50 ea.
Turkeys: none.
Guineas: 3.25 ea.
Roosters: 3.50-6.00 ea.
Bantams: 2.25-3.50 ea.
Heavy hens: 2.50-3.50 ea.

Silkie: 3.50 ea.
Muscovy hens: 5.25 ea.
Mixed ducks: none.
Muscovy Drakes: 10.00 ea.
Guinea pigs: 2.00-4.25 ea.
Barn pigeons: 2.00 ea.
Fancy birds: 2.50-3.00 ea.
Quail: none.
Rabbits: under 4 lbs. 1.50-3.00 ea., 4-6 lbs. 4.40-6.60 ea., over 6 lbs. 6.60-9.25 ea.

JUNE DAIRY MONTH

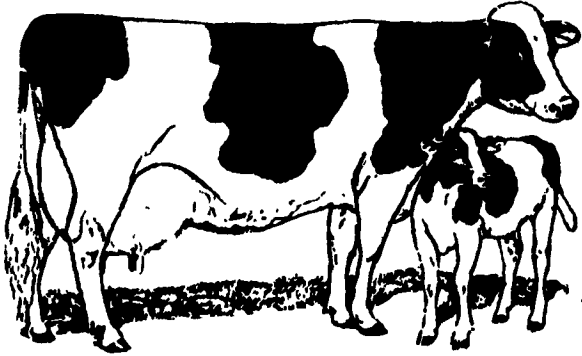


1 FREE with 10



ORDER NOW - OFFER ENDS JUNE 30

Buy 10 - 50 Lb. Bags (500 Lbs.) of Pennfield Dry Cow Conditioner and Receive 1 - 50 Lb. Bag Free



Balanced Nutrition Is The Key

A properly formulated dry cow program allows the dairyman to "manage" the nutrient intake of the cow. Pennfield offers "4" Dry Cow Conditioner products with high levels of fortification. On farm feedstuffs should be tested for nutrient content and combined with the proper Pennfield product.

#580

**PENNFIELD
DRY COW**

2 Lbs Per Day

For Use with
LEGUMES

+
CORN SILAGE

#581

**PENNFIELD
DRY COW**

2 Lbs Per Day

For Use with
MIXED HAY

+
CORN SILAGE

#582

**PENNFIELD
DRY COW**

2 1/2-3 Lbs Per Day

For Use with
CORN SILAGE

+
LIMITED GRASS HAY

#583

**PENNFIELD
HI-ENERGY
DRY COW**

4-5 Lbs Per Day

**STEAM-FLAKED
BEANS
VIT./MIN. PELLETS
STEAM-FLAKED CORN**

60 DAY DRY COW PROGRAM

(COW WORK SCHEDULE)

1. CALF GROWTH - The majority of calf development takes place in the last Sixty (60) Days before the calf is born. Sufficient nutrients must be provided for the cow to maintain her body weight PLUS the nutrients for development of 50-60 lbs. of calf body weight. The cow will deplete her body reserve if necessary during this period in order to provide the necessary nutrients for calf development.

2. BUILD MILK SECRETORY CELLS - The 60 day period gives the cow time to rebuild the number of milk secretory cells in her udder to produce maximum milk during the upcoming lactation.

3. RESTORE NUTRIENT RESERVES - After meeting body maintenance needs and calf growth, the cow will use available nutrients to restore her body reserves. Body reserves are used to support peak milk production in the next lactation. The majority of body condition should be put on in the latter part of the previous lactation.

4. EXERCISE AND MUSCLE TONE - The 60 day period should be a time for cows to get out of the milking barn and off concrete. An exercise lot or pasture will help the cow rebuild muscle tone.

Round The Clock Service - 24 Hours Per Day



pennfield feeds

Office 1-800-732-0467 Orders 1-800-995-0333

Quality - Value - Service