



**WIPE THE WEEDS  
OUT OF YOUR  
YARD - GARDEN -  
CROPS.**

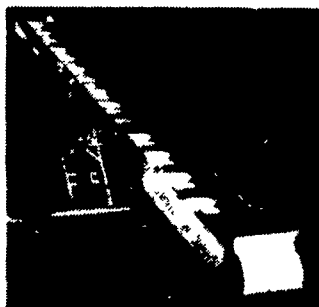
**AUTOMATIC  
METERING  
WEED WIPER  
CONTACT  
HERBICIDE  
APPLICATOR**

- ✓ Easier than hoeing
- ✓ Safer than spraying
- ✓ No overspray
- ✓ Economical
- ✓ No spray drift

**\$23.00**



**PORTABLE ELEVATORS**



Well Balanced,  
Ruggedly Built  
For Many Years  
Of Trouble  
Free Service.  
New, 36 Foot  
In Stock with  
No. 62 Chain 4'  
paddle spacing.

NE 1182 Fob. Our lot only \$2,475

**See Binkley & Hurst for a Good Rotary!  
DEFEND AGAINST WEEDS**



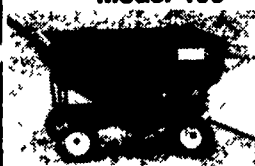
**12'  
Model  
In Stock**

**3400 Series Toolbar Rotary Hoe**  
The only good weed is a dead weed, and the Weed-it Family is your first defense. Our Rotary Hoes and Cultivators reduce herbicide costs while shattering crust and aerating the soil at high speeds. Protect your fields. See Binkley and Hurst Soon!

**Get Ready For Small Grain Harvest With  
McCurdy Your Best Buy in Grain Handling & Fertilizer**



Model 190



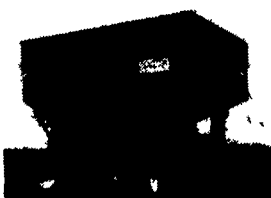
Model 230

**SEE  
BINKLEY  
& HURST  
NOW!**

• Most Sizes In  
Stock For Quick  
Service &  
Availability

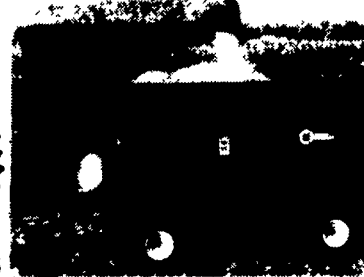
• We Sell In  
Volume

**SIZES  
IN STOCK:  
190 BIN  
230 BIN  
275 BIN  
325 BIN**



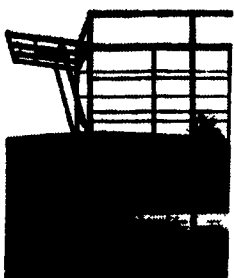
Model 275

**Running  
Gears  
With  
5  
Year Axle  
Warranty**



Model 325

**Tow Away A Quality New Bale Rack Wagon  
With Lots of Fine Features! From Binkley & Hurst Bros.**

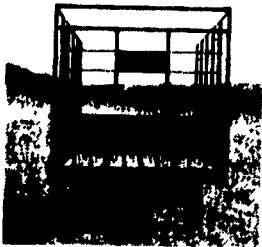


- 3"x8" main beams
- 2"x5" cross member
- Nailed with galvanized nails
- Bolted with plated bolts
- Fabricated side rail for extra strength
- 8 ton gear
- 11L tires & tubes
- Extension tongue
- Built to last

**New Chain  
Release  
Side  
Opening**

**Unique Rear Unloading**

- 18"x8" inside
- 14 ga. square tubing, for extra strength and long life
- Front and rear openings need only 38" clearance
- End gates made of extra heavy expanded metal, and spring loaded latches
- Beds built of all oak



**Options:  
Running Gears  
& Flat Beds**

**Comes With A New Improved Running Gear, Call And Ask  
For Amos Sr. and Place Your Order Now!**

**BINKLEY & HURST  
BROS. INC.**

133 Rothsville Station Rd.  
P.O. Box 0395  
Lititz, PA 17543-0395  
(717) 626-4705  
1-800-487-2978



**BEST BUYS IN USED EQUIPMENT**

**Planters  
Available Now!**



**Kinze Swing Frame  
8 Row**

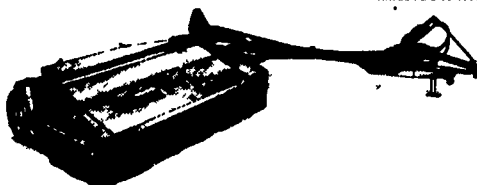
**Used Swing Frame 12 Row**

**See Binkley & Hurst Bros.  
For Used Planters Today!**

**Used Bean & Corn Planters In Stock**

- (1) Monosem 6 Row Specialty & Corn & Bean Planter!
- (2) UM2787 Used Kinze 12 row swing frame (for narrow transport) Planter with Interplanters for Soybeans with New Style Kinze Soybean Brush Meters
- (3) UM2686 John Deere 6 Row 7000 Planter, Nicel
- (4) UM2720 John Deere 7000 6x20 Planter with Liquid Fertilizer and Rubber Closing Wheels
- (5) UM2692 6 Row Pull Type Monosem Planter with Dual Transport Wheels, Dry Fert., V Rubber Closing Wheels, Row Markers, Monitor, Gandy Insecticide Attachments
- (6) UM2723 John Deere 7000 4 Row Planter (Coming)
- (7) UM2538 White Model 5400 Planter 6 Row 30" Spacing with Double Disk Openers
- (8) UM2488 IH 800 6x30
- (9) UM2680 John Deere Model 71 3 pt. 8 Row Plate Planter with Double Disc Openers and other Fine Features, Bean Planter, Current Model

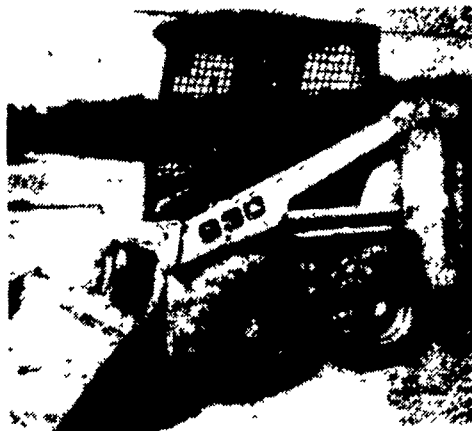
**Need a Used Mower Conditioner  
See Binkley & Hurst Bros. Today!**



**Come and Take Your Pick  
from our Selection of Used Haybine  
and Mower Conditioners**

- (1) UM2658 New Holland 489 with hyd swing tongue 9 foot haybine
- (2) UM 2688 9 foot Model 489 Haybine, Come & See
- (3) UM2745 Very Good Mechanical Condition IH 9 foot Model 990 Mower Conditioner.
- (4) UM2749 John Deere 1219 9 foot Mower Conditioner
- (5) UM2797 Hesston Model 1120 9 foot Mower Conditioner
- (6) UM2794 Gehl Model 2160 9 foot Mower Conditioner
- (7) UM2793 New Holland 488 Haybine 9 foot
- (8) UM2771 Vicon Model 321 Disc Mower Conditioner, 10 1/2 foot cutting width, Good Condition.
- (9) UM2809 IH 56 Blower \$450

**Mustang 930 Diesel**



UT3097

6 Yrs. Old, 2965 Hrs., Tires Will  
Never Go Flat (Foam Filled)

**Only \$7,900**

**Used Skid Loaders**

- (1) UT3163 Case 1845 Diesel with 80" litter bucket
- (2) UT3150 Gehl 2600 skid loader with 48" wide bucket, lights, Onan Power engine
- (3) UT3140 Gehl 4625 47 HP Kubota powered skid loader with 65" wide utility bucket, 1150 hrs., 10:00x16.5 Galaxy tires, lights
- (4) UT3139 Gehl 4610 diesel 44 HP Skid Loader with self leveling loader, 65" wide bucket lights

**Late Model  
Gehl SL4625  
Skid Loader**  
With 47 HP Kubota  
Diesel & 65" Bucket



- (5) UT3126 Case 1845 Diesel 1981 Model with 73" utility bucket, lights, new tires & seat, Come & See
- (6) UT3097 Mustang 930 Skid Loader with dirt bucket & foam filled tires, approx. 1989 Model, 2965 Hrs. **\$7,900**

Case 1840 Diesel



Case Cummins  
Power 50 HP  
UT3110 With Aux.  
Hyd., 63" Bucket,  
Good Solid Machine

Case 1845 Diesel



UT3126, Good 73"  
Utility Bucket, New  
Rubber 12:00x16.5, Lights  
**Only \$6,900**  
Come & See

- (7) UT3110 Case 1840 with 63" Dirt Type Bucket, 1114 Hrs., Aux. Hyd.
- (8) UT3121 Gehl 3510 with 54" bucket sold new by our co. in 1948
- (9) UT3177 Case 1835C diesel with 10:00x16.5 tires 47 HP diesel

**Compact Hydrostatic  
Drive Gehl  
Skid Loader  
Model 2600**  
UT3150, 48" Bucke,  
Onan Power  
**Only \$3,750**



**BINKLEY & HURST BROS., INC.**

**(717) 626-4705**

1-800-487-2978  
Fax 717-626-0996

133 Rothsville Station Rd., P.O. Box 0395, Lititz, PA 17543-0395  
Located 1/2 Mile North of Rothsville

©1995 CASE CORPORATION  
Case IH is a registered trademark of Case Corporation

