

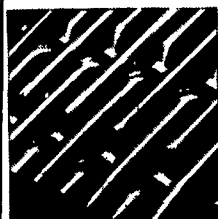
# FARMER BOY AG. INC.

## INVENTORY REDUCTION

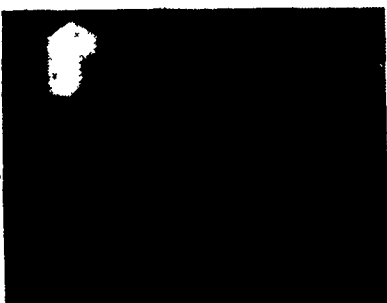
Sunne Thermostats 23080261 \$22 each  
 Solenoid Valves 2410055 \$25 each  
 Medicators 12040012 \$185 each  
 V-Belts Super Low Price  
 Heat Mats Super Low Price  
 56" Ceiling Fans 11010155 \$60 each  
 (see below)  
 Meterman Control Units 11070029 \$175 each  
 (see below)

Metal Rabbit Nest 26030005 \$9.50 each  
 Hanging Poultry Feeders Super Low Price  
 Poly Feed Bunks 10010010 \$180 each  
 (see below)  
 Used LP Gas Heaters 225,000 BTU \$175 each  
 Shenandoah slightly dented Brooder Domes \$17 each  
 Stainless Steel Inletting Best Offer

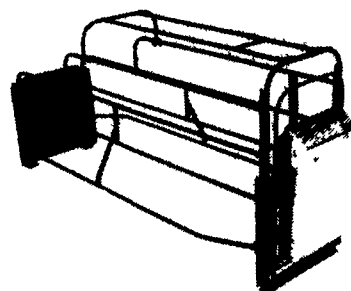
Westfield Transport Augers  
 Lowest Price Guaranteed



Woven Wire  
 (Non-standard sizes)  
 \$1.60 sq. ft.



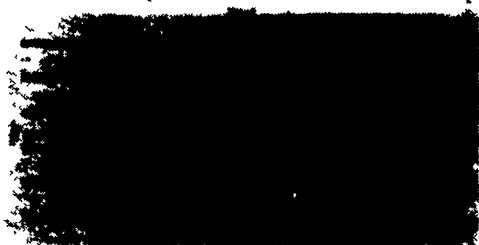
Brooder Lamps  
 6, 9, 11 & 14 ft. length cords



Model 60 Farrowing Crate (solid rod construction)  
 \$149 while they last  
 Feeder sold separately

## ATTENTION DAIRYMEN

### FLOORING TRUCKLOAD SALE



Concrete Hog Slates  
 Excellent for use under Calf Hutches

### FEEDING

#### GSI Feed Bins

We assemble, deliver and set up bins on your farm.

- \*Weather tight die-formed roof
- \*Stronger engineered sidewalls
- \*Ground controlled fill caps
- \*Galvanized roll-formed legs
- \*Engineered leg braced systems
- \*Fast flowing hopper bottom

Now Specially Priced



### Polyfence Line Feed Bunks

Specifications:  
 Material - Polyethylene (Rockite)  
 Weight - 160#  
 Bolts - stainless steel 3/8" x 1/2"  
 End Panels - Polyethylene (Rockite)  
 Size - 8' long, 32 1/2" wide at top  
 30" wide at the bottom  
 30" high on the high side (feeder wagon side)  
 23" high on the short side (cattle side)

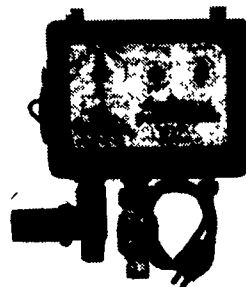
- Easy Installation
- \*No back breaking work
  - \*Each bunk comes with angles for cables and end caps
  - \*Easy clean out all year long
  - \*Smooth bottom bunk to prevent sore noses and tongues
  - \*Each bunk designed to bolt together with each other
  - \*Cattle like eating from a smooth bottom bunk



### WATERING

#### Universal Controller

UCS04B Droplet Emitter



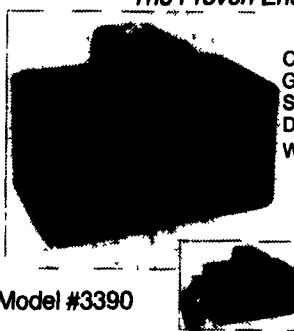
- Simple and automatic control of water flow
- Ideal control for livestock and poultry cooling systems
- Line filter and protective check valve included

#### Energy-Free Waterers

The Proven Energy Free System

##### BEEF/DAIRY

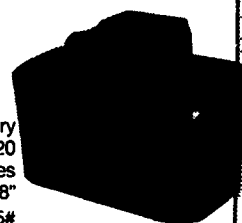
Capacity: 150 head beef/40 head dairy  
 Gallons: 44  
 Specific: 2-10" openings, ball closures; convertible  
 Dimensions: 43" x 29" x 20"  
 Weight: 105#



Model #3390

##### BEEF/DAIRY

Capacity: 150 head beef/40 head dairy  
 Gallons: 20  
 Specific: 2-9" openings, ball closures  
 Dimensions: 24" x 36" x 18"  
 Weight: 65#

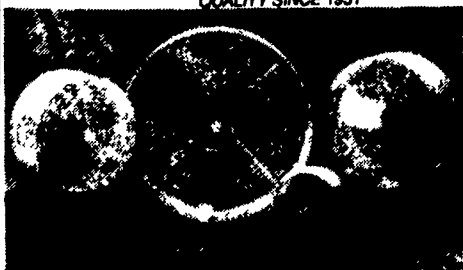


Model #3360

### MiraFont

THE PROVEN ENERGY FREE SYSTEM

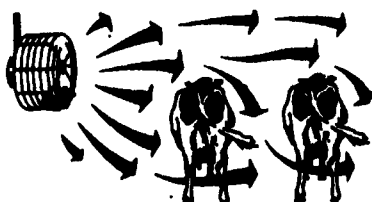
### VENTILATION



(#VS20=8000 c.f.m., #VS24=8500 c.f.m.)

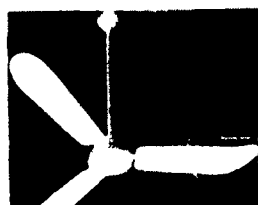
#### Barn Kooler

The only patented air circulation fan on the market! Because of its design, it provides more air movement and therefore more cooling effect than any other circulation fan.



U.S. Pat #4,819,183

#### CANARM



Ceiling Fans  
 56" Metal Blades



#### AAA Glass-Pac Fiberglass Ventilation Fans

Fiberglass fan housing won't rust or corrode, plastic shutter, solid one piece fiberglass propellers & heavy duty motor

#### Fiberglass Maxi-panel Fans

Exclusive lifetime guaranteed fiberglass housing never rusts and never needs painting High efficiency motors for greater electrical economy Choose from 14", 18", 24" or 36" sizes



Full Line of Parts in Stock For Your Poultry and Hog Needs

24 Hour Service

6/3

# FARMER BOY AG. INC.

410 East Lincoln Avenue, Myerstown, PA 17067

717-866-7565 • 1-800-845-3374

Swine & Poultry Systems Specialists

Hours: Mon-Fri 7 to 5  
 Sat 7:30 to Noon

Check Our Warehouse Prices



WE SHIP UPS