

TD15 truck loader as is, best offer. Studebaker dump truck, best offer. Susquehanna County, (717)278-2329

WANTED. Rollback truck bed, 22' long, consider disabled truck w/good rollback bed. 304-263-2976.

Storage trailer, 1979, 45', good condition, windows on left side, side door on right, white paneling on inside. \$1500 OBO 717/355-2426.

Strong, reliable, Scout, 4x4, terrific for daily or farm use, heavy frame, 192hp 4, (717)367-8126.

Tag Along Trailer, Birmingham, 1980, 20-ton, 20' bed, tandem, \$4250. 717/354-3105.

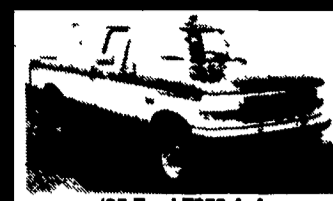
Tandem Log Truck w/ Apprentice 110 Loader, Good Condition 2 1/2' Steel Bed w/Hydraulic Lift and All Controls, Down Riggers, Used at Block Plant Serious Inquiries Only (814)239-8499.

C.P. MARTIN FORD, INC.

RT. 272 ACROSS FROM THE GREEN DRAGON SIGN IN EPHRATA-THE HEART OF LANCASTER COUNTY
733-6644 OR 1-800-258-2677



'94 FORD F150 4X4 Super Cab, 6-Cyl., 5-Spd. #6246A



'95 Ford F250 4x4 XLT, 7.3 Power Stroke Diesel, AT, w/Fisher Snow Plow only 2,000 miles



'90 FORD F-150 4X4, V8, 5 Speed, Blue (6072A)



'94 FORD F150 4X4 AT, AC, Bedliner, 17,000 Miles (P426)



'93 FORD RANGER SUPERCAB STX, Loaded, AT, A/C, Red (P421)



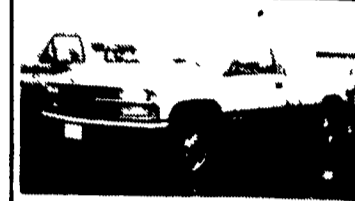
'92 FORD E-350, 15 Passenger, Red, Loaded (N613A)



'94 FORD F150 4X4 XLT, Loaded, AT, AC, Bedliner, 14,500 Miles (P423)



'95 FORD F150 SUPER CAB 4x4, Loaded 8 TO PICK FROM



'93 CHEVY SILVERADO 4X4, V-8, Auto., 10,000 Miles (F135)



'89 FORD F150 SUPERCAB 4x4, 302 V8, 5-Spd., XLT, Matching Cap, Extra Clean (6130A)



'92 FORD F150 4X2, Supercab, XLT, Auto., Loaded (6052A)



'92 FORD F150 4X4 XLT Super Cab, AT, AC, 34,000 Miles, Loaded (P433)

JONES GM PARTS CENTER



IS YOUR

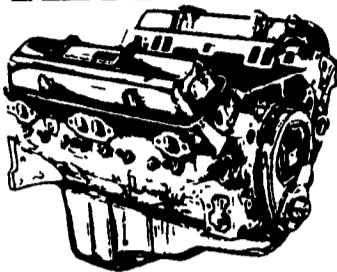
Goodwrench ENGINE HEADQUARTERS

GM GOODWRENCH 350 V8 1973-85 Part Number 10067353

New Engine - Not Rebuilt 36 Month or 50,000 Mile Warranty

\$1199⁰⁰

New Engine - No Core Fee



HIGH PERFORMANCE ENGINES NOW IN STOCK
350-300 H.P. — \$1695⁰⁰ 350-345 H.P. — \$2895⁰⁰

Call 394-0711 for prices on other New or Remanufactured Goodwrench Engines. 2.5 Liter thru 454 cid. Gas and Diesel

Chevrolet - Pontiac - Olds - Buick - Cadillac - GMC

JONES GM PARTS CENTER

1335 Manheim Pike, Lancaster, PA 17604

Hours: Mon.-Fri. 7:30-5
(717) 394-0711



Mr. Goodwrench



LANCASTER'S LARGEST Truck Dealer & We're Getting Bigger

PONTIAC • HONDA GMC TRUCK
1335 Manheim Pike, Lancaster

Prices based on straight sale, Tax & Tags extra. Trades accepted at actual cash value. Must present this ad at time of purchase for sale price.

JONES
717-394-0711

JONES BEST BUY USED TRUCKS

<p>'92 CHEV C20 DIESEL 6.5 Turbo, AT, AC, Silverado. #5839 Was \$16,995 SALE \$14,350</p>	<p>'94 CHEV SUBURBAN 4x4 AT, AC, V8, Silverado #5941 Was \$28,995 SALE \$26,400</p>	<p>'95 JEEP WRANGLER 5 Spd., 4 Cyl., Like New #5900 Was \$15,900 SALE \$12,900</p>	<p>'94 CHEVY S10 LS, V6, 5 Spd, 6000 Miles #5835 Was \$12,995 SALE \$10,800</p>	<p>'92 DODGE DAKOTA XCAB 4X4 V8, AT, AC, LE, 30,000 Miles #5950 Was \$15,995 SALE \$13,900</p>
<p>'89 FORD CARGO VAN Ext. Van, AT, 6 Cyl., PS, Clean #5905 Was \$9,995 SALE \$7,150</p>	<p>'87 NISSAN PATHFINDER 4X4 5 Spd., SE V6, AC, #5945 Was \$9,900 SALE \$7,350</p>	<p>'91 CHEV S10 BLAZER 4X4 V6, AT, AC, Tahoe #5498 Was \$14,900 SALE \$10,900</p>	<p>'90 GMC SAFARI VAN AT, V6, AC, SLE 8 Pass. #5946 Was \$11,995 SALE \$8,900</p>	<p>'91 CHEV K10 4X4 5 Spd., V6, AC, Shortbed #5688 Was \$12,995 SALE \$9,950</p>
<p>NEW '95 GMC 15' CUBE VAN 11,000 GVW, AT, V8, Supreme Body, (12' in Stock) Also #11659 List \$25,034 SALE \$22,800</p>	<p>'89 CHEVY SUBURBAN 4x4 Silverado, V8, AT, AC, 8 Pass., Clean #5920 Was \$14,900 SALE \$12,700</p>	<p>'93 CHEV K2500 4X4 6.5 Turbo Diesel, AT, AC, Silverado #5939 Was \$22,900 SALE \$19,850</p>	<p>'92 GMC JIMMY 4x4 AT, AC, SLE, 4 Dr., 30,000 Miles #5896 Was \$18,995 SALE \$16,900</p>	<p>'91 CHEV K2500 XCAB 4X4 8600 GVW, AT, AC, V8, Silverado #5879 Was \$18,995 SALE \$16,800</p>
<p>'94 CHEV S10 BLAZER 4X4 Tahoe, AT, AC, V6, 4 Dr., 12,000 Miles #5947 Was \$20,190 SALE \$18,800</p>	<p>'90 CHEV S10 BLAZER V6, AT, AC, Tahoe #5782 Was \$14,000 SALE \$11,300</p>	<p>'93 GMC K1500 4x4 SL, 5 Spd., V6 #5870 Was \$15,500 SALE \$13,400</p>	<p>'91 CHEV C10 350, AC, 5 Spd., Silverado # 5929 Was. \$12,900 SALE \$9,950</p>	<p>'90 GMC 3/4 PICKUP 4X4 V8, 5 SPD., SLX #5869 Was \$12,995 SALE \$10,200</p>