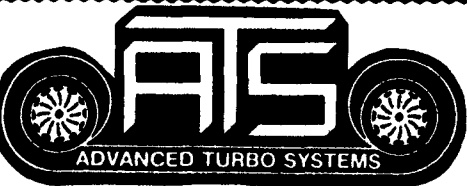


1986 Isuzu with Steel Bed
Good Rubber, Overhauled \$6,500
717-529-2512
No Sunday Calls



Have Your 6.2, 6.9 & 7.3 Diesel Engine
Turboized Before The Busy Season
Call Us & Ask About The New
Wastegated Turbo For The 7.3 Engine

PARKVIEW GARAGE, INC.
AMERICAN & FOREIGN DIESEL SPECIALIST
A.T.S. TURBO SYSTEMS

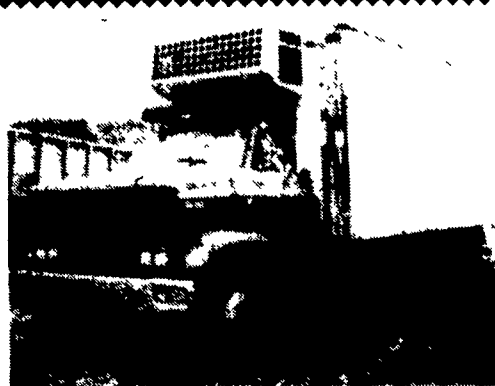
39 PARKVIEW HGTS. RD. EPHRATA, PA 17522
P.O. Box 246 Ph. (717) 733-9691

Poor Performance and Workmanship
Go Along w/Cheaper Prices.



MACK 6x6 TRUCKS
Cummins V8 Diesel Jake and full Air Brakes
P.S. 1400/24 Tires Double Frame Rear Drag
Winch (50,000 lbs.). Differential Locks. (60
Tons) Hauling Capacity. Like New Only 800-
17,000 Miles. A must for every Farmer.

\$10,500 to \$12,500
(814) 834-1018 St. Marys, PA



1987 GMC TOPKICK

3208 Turbo, 215 hp, CAT
6 sp, AB, PS, AC, Double Frame w/20'
Morgan RD-1 Thermo-King. Electric stand-by,
roll-up rear door, side door. 33,000 GVW Very
good.

\$15,500 or will sell body separately.

Ready to Install

18' Scott Silage & Grain Body
Sunny Acre Sales

RD 2 Tyrone, PA 814/742-7303

'93 Ford XL HD F150, 300
EFI, 5 spd, PS, PB, AM-FM
cassette, 6,250 GVW,
13,000 miles, dark green,
excellent condition,
\$10,500. 717-733-2873

Lancaster Farming, Saturday, June 3, 1995-C49
Ford dump truck, F800
S/A, 21,000 GVW, no CDL,
great farm truck, \$2495.
610-282-2507.
Morbarck 300, 12 chipper,
68TA Cummins, 300 hrs.,
like new, \$16,000.
215-572-7700.



QUARRYVILLE

CHRYSLER PLYMOUTH DODGE



**1995 DODGE RAM 3500 4x4
DUMP TRUCK**
Automatic 5.9L, Anti-Spin

**1995 DODGE RAM 3500 4x4
OMAHA STAKE BODY**
8.0L V10, Anti-Spin, Automatic

**1995 DODGE RAM 3500 4x4
OMAHA BADGER UTILITY BOX**
5.9L Anti-Spin, Automatic
ALL IN STOCK NOW

\$500.00 Rebate to PA FARM BUREAU MEMBERS
12 - 4x4's To Choose From - as low as \$18,995



**DODGE RAM 1500
CLUB CAB**
4x4 & 4x2

DODGE RAM 2500 CLUB CABS
Diesels - 4x4 & 4x2

DODGE RAM 3500 CLUB CAB
4.2

**SOME IN STOCK
SOME ARRIVING SOON**

Quarryville

Dodge & Dodge Trucks
Chrysler • Plymouth

In The Heart of Southern Lancaster County

RT 222 1 mile North of Quarryville, PA

1-800-781-8220

Keystone Peterbilt, Inc.

1467 Manheim Pike • P.O. Box 4396 • Lancaster, PA 17604

1-800-
243-2458



717-
299-6630



**1984
PETERBILT
359-119" 63"
LOW**

3406-400 Eng.;
RT014613 Trans.; SQ
100-3.73 R. Axle; Air
Ride w/ Rod. Susp.



**1988 PETERBILT 379-36", 3406B - 350 Eng.,
RT014613 Trans.; DS402-3.70 R Axle; Pete
Air Leaf Susp**



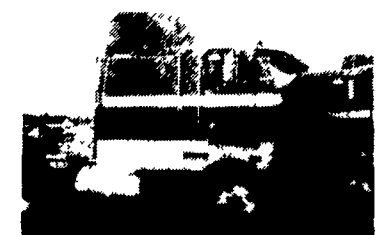
**1988 PETERBILT 362-110; 3406-350, RT014609B,
Trans., DS402, 4 33 R Axle, R Axle, Pete Air Ride**

1990 IHC 9670

3406-350;
RTX14609B
Transmission;
Inc 400 R. Axle
Air Ride

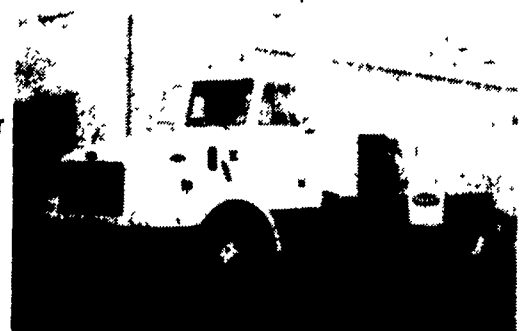


**1984 PETERBILT 359-36" 3405A 400
RTX14609PR Trans. SQ100-3.73 Pete Air
Leaf**



**1987 PETERBILT 362-110", 3406B-350 Eng.;
RT014613 Trans., DS402-3.70 Rear Axle,
Peter Air Leaf Susp.**

**1995 MODEL 330
MEDIUM DUTY
PETERBILT**
Engine Cat 3116 230
HP, Transmission Fuller
FS6306A, 6 Speed,
Rear Axle Eaton
21065S 21,000 Front
Axle Eaton EFA 12F4
12,000 Wheel Base
190 Cab to Axle 120
Cab to End of Frame
195 33,000 GVW



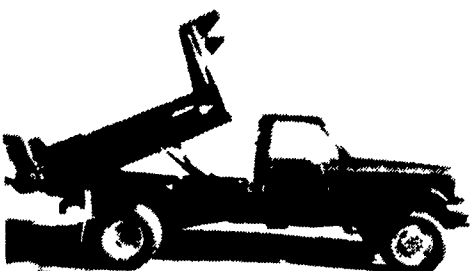
TRY US! KELLER BROS.

RD 7, Box 405
Lebanon, PA
17042

717-949-2000

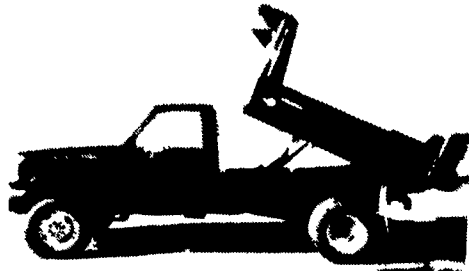


4x4

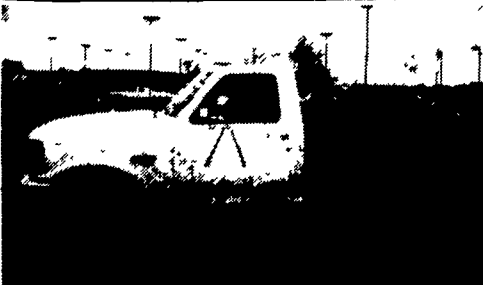


**1995 SUPER DUTY 10' DUMP 4x4, 7.3L
Power Stroke, Turbo Diesel, 5-Spd, Air,
15,000 GVWR**

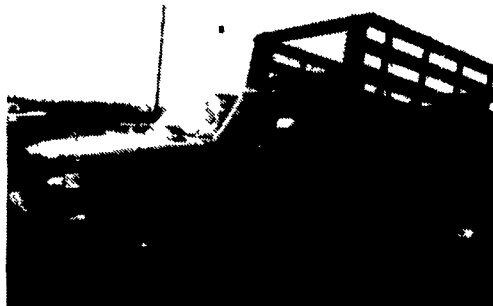
4x4



**1995 F350 8' DUMP 4x4, 7.3L Power
Stroke Turbo Diesel, 5-Spd, Limited Slip
Rear Axle, 11,000 GVWR**



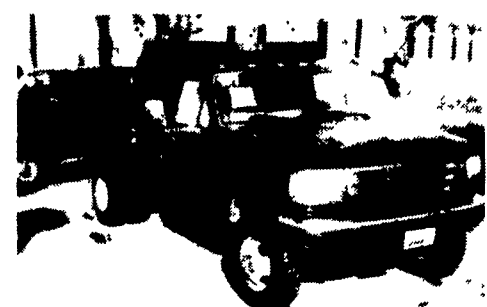
**1995 F-SUPER DUTY CHASSIS CAB, 137"
& 161" Wheel Base, 7.3L Power Stroke
Turbo Diesel, 5-Spd., 15,000 GVWR
3 To Choose From!**



**1995 F-SUPER DUTY 12' STAKE BODY
DUMP, 7.3L Power Stroke Turbo Diesel,
Automatic & 5-Spds. Available! 15,000 GVWR**



**1995 F-SUPER DUTY 8' DUMP, w/Rev.
Pack Tool Boxes, 7.3L, Power Stroke
Turbo Diesel, 5-Spd., 15,000 GVWR**



**1995 F-SUPER DUTY DUMP, 7.3L Power
Stroke Turbo Diesel, 15,000 GVWR, 8' &
10' Bodies Available**