

'95 Dodge Larmie SLT 2500, 4x4, 360 Magnum, auto, PS, PB, PW, PDL, cruise, tilt, air, 8,800 GVW, 8,000 miles w/balance of factory warranty, dark green & silver, like new, \$22,900. 717-733-2873

BATTERIES \$25-\$35. Let us recondition your old battery and save over 50%. We buy old batteries. PowerPro Battery, 1124 Elizabeth Ave., beside Lancaster Stockyard, 717/399-9545

1988 Ford CF 7000, 29500 GVW, air brake, 17' van body \$6700. 717/867-4896.

Diesel Engines: Detroit, 318, 16V71, 12V71, 671, V-653, 6V92, 8.2; Chev. diesel 6.2. Other engines and truck parts. Reasonable prices. Call after 6PM, (610)944-9871.

Equipment trailer 1994, 9 ton, 3 axle, 18' deck, \$3500., 410/549-7392

10' Phoenix Dump Bed
w/Heil Scissor Hoist w/Oil Reservoir, Hyd. Pump, In Good Working Order
(610) 756-6993

MOTORS
New & Rebuilt
350, 366, 427, 454
6.2 Diesels
Rebuilt & Used
Will Install
Roll Back Service (at cost)
717-762-6415

V8 Cummins
(Can Hear Run), 10 Spd., Road Ranger, 34 Rears, Reyco, 2-100 Gallon Tanks, 1 Trail-Mobile Sliding Tandem, 1 Set of Landing Gears, Best Offer. Must Go.
(814)642-2188

TIRONIE TARPS
USA TARP STRAPS - 100 for \$46**
2"x27' HD RATCHET ASSEMBLIES NOW...\$18**
SHOP AROUND - THEN CALL
1-800-874-2928
FAX: (717) 644-3127



B83 Mack Dump
Just Off Jobsite, Maxi Brakes, Power Steering, 5+4 Trans., Good Running Condition.

\$4,500.00

Days: (410) 398-9004
Eves: (410) 398-9430



New '95 IH Model 2674, Dump ready, AC, 300 HP IH Diesel, 10 Spd. Man. w/OD, 56k GVW 40k cap, Rr Ax 16k Fr, CA 120" WB 184" \$58,500 +FET. Call Jake or Roy, 9AM-4PM
717/898-5000 or 800/872-8873



Hydraulic Dump Trailers:
Buy from the Manufacturer and Save \$. All sizes built for your working needs.
FREE Delivery up to 200 miles.
Guaranteed Lowest Prices
Call: **LOAD BOSS INC.**
814-623-8696



76 GMC 3 Ton High Lift Coal Truck, Well Maintained, Fair Cond. \$2,500
717-653-9580

LEFEVER BROS.
CHEVROLET
CHEVY TRUCKS **Geo.**
406 U.S. Route 15 North, Dillsburg PA
Quality Dealer Since 1921 **717-432-9611**

1995 CHEV C-70
26,000 GVW, 5+2 Speed Cat Diesel; 240" Wheel Base with Slide Frame
2 In Stock



1995 CHEV K-3500
12,000 GVW, 8' Dump, V-8 Gas, Theile Dump Body, Drop Sides,
2 Wheel Drive Also In Stock



"NEW"
1994 CHEV C-70 DUMP
33,000 GVW, 215 H.P. Cat 5+2, Air Brakes, Air PTO and End Gate
SAVE \$\$\$\$



Nicest
Pre Owned
Trucks
Anywhere!

**RTE. 422 WEST
LEBANON, PA**

(Across From Lebanon
Valley Mall)



PHONE
717-274-2000

Business Hours
Mon Thurs 9-9
Fri & Sat 9-4

SPECIALIZING IN HEAVY DUTY TRUCKS



ALUMINUM BOX
91 CHEVY H.D. 3500
15000 GVW, 454 AT, only 43,000 Miles, 14 1/2 Ft. Box, Roll Up Rear Door, Slide Out Ramp
Will Sell As Chassis



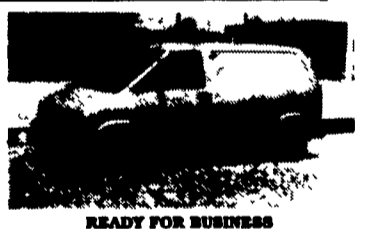
4x4 Chassis
94 Chevy 3500 Silverado
Long Wheel Base, 84" C.A. 454 I.I. 5 Sp O/D, A/C, Only 19,000 Miles, Factory Warranty
A Real Powerhouse, Very Rare



DODGE CUMMINS 4X4
89 DUMP TRUCK
Super Power, Turbo Diesel, Auto, 8 Ft. Dump Body, New Tires, A Powerhouse



DIESEL CARGO VAN
91 Ford E-350
Extended Length, 7.3 Diesel, AT, A/C, 80,000 Miles, Real Clean



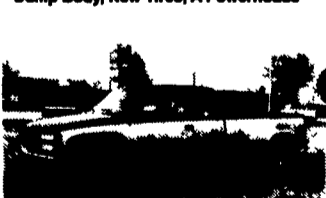
READY FOR BUSINESS
90 FORD AEROSTAR CARGO VAN
Perfect, V8, Auto, A/C, 80,000 Miles, Remaining Ford Factory Warranty



4x4 Diesel Super Cab
92 Ford F-250 XLT
Big 7.3 Diesel, AT, Limited Slip, 4:10, 38,600 Miles



ALUMINUM WALK IN
93 GRUMAN
18 Ft. Aluminum Body, 350 Chevy, V8, Auto, A/C, Roll Up Back Door, 1600 Lb. Lift Gate



4x4 SUPER CAB DUALLY
92 GMC SLE
Big & Strong, Ready To Work, 454 I.I. Auto, A/C, 10,000 GVW, Posol. 4:10 Gears, Clean As A Pin, 34,000 Miles



Diesel 4 Dr. Chassis 90 Chevy
3500 waiting for your bod.
6.2 Diesel; 4 Spd. A/C Excellent body & Paint Dual tanks.
30,000 original miles \$13,800



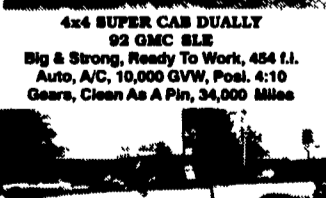
4x4 Diesel 93 Ford F-250 XLT
Heavy Duty 3/4 ton 8600 GVW.
Big 7.3 Diesel at A/C Dual Tanks.
Limited slip 4:10 gears. Only \$18,900



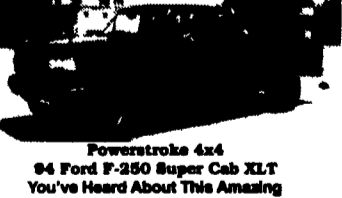
4x4 Flatbed Dump 89 Ford F-350
A Rare Find Only 65,000 Miles, 460 I.I., 5 spd., Dual Tanks, Tow Pkg, 8 Ft. Body



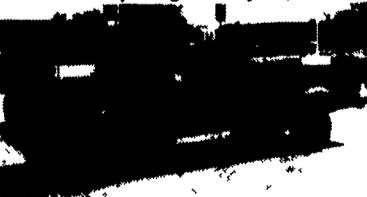
4x4 Super Cab Dually
93 Ford F-250 XLT
Ready to work 7.3 Diesel, 5 Sp. A/C Captain chairs. Tow Pkg. 4:10 gears. Chrome Wheels. 37,000 miles.



4x4 Dually
92 Dodge D-350 LE
Awesome Pulling Power Cummins Turbo Diesel, 5 Spd., Tow Pkg., Posol-Axle, 30,000 Miles



Powerstroke 4x4
94 Ford F-250 Super Cab XLT
You've Heard About This Amazing Engine. Now Come Drive It, 22,000 Miles



TURBO DIESEL
94 FORD F-250 SUPER CAB 4x4
Totally Awesome. Plenty of Power.
Turbo 7.3 Diesel AT A/C, 4:10 gears, 21,700 miles



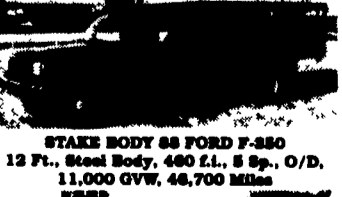
Diesel Cargo Van
93 Ford E-350
Nice & Clean, Straight Body, 7.3 Diesel, Great Fuel Mileage, Long Life, 38,000 Miles



HEAVY DUTY 94 CHEVY H.D. 3500 Chassis
Big 15,000 GVW, 8.5 Turbo Diesel, Auto, 161 W.B., 84" C.A. 100,000 Mile Engine
Warranty From Chevy



LOAD IT UP
88 Ford Cube Van
14 Ft. Box, Roll Up Rear Door, Slide Out Ramp, V8, Auto, A/C Excellent Body



STAKE BODY 88 FORD F-350
12 Ft., Steel Body, 460 I.I., 5 Sp., O/D, 11,000 GVW, 48,700 Miles



Powerstroke 4x4
94 Ford F-250 XLT
Beautiful, Like New, Only 4,800 Miles, 5 Spd., A/C, H.D., 8600 GVW, You Gotta See It