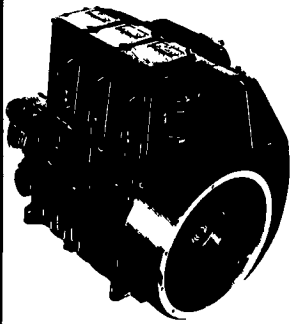




The HEAVY DUTY Diesel



Complete air cooled-
Not Oil cooled
Flywheel fan cooled-
No Blower Belt
Timing gears-
No Timing Belt
Can be hand cranked
Compression release

A Proven Diesel Engine for Long Life

**GIVE US A TRY - CHECK OUR PRICES
DIESEL OUR SPECIALTY**

Distributor for
Lister/Petter and Lombardini Diesel Engines
6-8 12-V Regulated
CHARGE- MASTER Battery Charger

HOOVER DIESEL SERVICE

255 Mascot Rd., Ronks, PA 17572
(717) 656-3322 (717) 295-1729

DeLaval

10 Auto Cord Takeoffs For Stanchion Barn
12 Auto Cords for Parlor
3" Low Line for Double 8 & Double 12 Parlor (Parallel)
2 3" SS Double/Top Entry Receivers
24 Super-flow units
24 Delatron Pulsators
12 SST take offs
Double 9 herringbone, SST takeoffs, 3" low line, blue diamond breast rail, 2 years old
Vacuum pump w/15 hp motor
Double 6 3" low line w/washer
Rationmaster computer feeder w/5 stations
Double 4 Parlor w/take offs & weigh jars
Double 4 parlor w/take offs & 2" low line
78 vacuum pump
8 Super flow claws
8 Delatron pulsators
6 85 lb. weigh jars
8 65 lb. weigh jars

Boumatic

8 2100 take offs
6 Little Champ take offs
Double 4 2 1/2" low line w/washer
Double 8 3" low line
Double 6 3" low line
DB2000 vacuum pump w/10 hp motor
4 star flow claws & shells
Claws pulsators & washer

Westfalia

Double 8 Blue Diamond parallel parlor
Metatron take offs & meters
Back flush system for double 4
Double 8 w/DeLaval stalls & Westfalia 3" low line, 36" Westfalia crowd gate
10 Station computer feeder
4 station computer feeder
12 take offs
12 Pulsators
12 claws
8 claws w/shut offs
2800 Vacuum Pump w/5 HP motor

Surge

Double 6 Super Stall Herringbone Stalls
Double 4 Easy Milking Herringbone Stalls
Double 12 3" low line
3" double 4 low line
16 Eclipse Milkers w/pulsators
7 HTO air takeoffs
3" lowline, for double 6
Electrobrain washer
(8) weigh jars w/bracket
(16) VSO take offs
Double 4 parlor w/take offs & 2" low line
Double 6 parlor w/take offs & 3" low line
100 plus vacuum pump

Miscellaneous

14 Germania Model B Takeoffs
12 Choretime feeders w/Big Dutchman feed system
8 Germania Milking claws & shells
Metal free stall dividers
(2) 2" SS Pipeline for 30 stanchion barn, DeLaval, Boumatic
20x50 Harvestore, no unloader
Buy & Sell used milk tanks - any size

Freddie S. Smith
703/639-2262

DELAVAL

12-Super-Flow View Light Milkers
12-Blue Diamond Alignment Arms
12-Delatron 1 Pulsators
12-Jetter Washers
1-Delatron Master Controller
1-Teat Spray System
1-Model 83 Washdown Pump, Unused
1-Air Injector
1-Mueller S.S. Acuratherm Plate Cooler
78 Vacuum Pump w/S.S. Balance Tank, Oil Reclaimer, 10HP Motor and Motor Starter
Ration Master Computer Feeder w/4 Stations, and 100 Transponders Plus Spare Parts,
Under Belly Down Cow Lift
Raytec Calf Cart
12 Sections of 8' H-Bunk
30' of 14" Gutter Crates
25 Cattle Headlocks, 5' Sections
Kidd 7-16 Round Bale Chopper, Trailer Model
2 Farmco Feeder Wagons
Woods L-59 Belly Mower
Most Items Less Than 5 Years Old, Excellent Condition Sold Cows, York County
(717) 225-4511
1 (800) 349-0667



7 LIVESTOCK EQUIPMENT

1995 Corn Pro stock trailers 16' tag-a-long w/chute gate, rear swing gate, center gate, front escape door, pressure treated floor, 6 1/2" hx6" w, torsion axles, four wheel brakes, mounted spare tire, \$3430 (dealer) 800/392-2630.

FENCING

- High Tensil
- Split Rail
- Board Fencing
- Wire Mesh Horse Fence
- Material or Installation

Check Our Prices.
Call New Holland Fence
717-656-9596

STALL MATS



All rubber mat totally designed for animal comfort.

Ask about our different sizes
Free Delivery • Call For A Free Sample

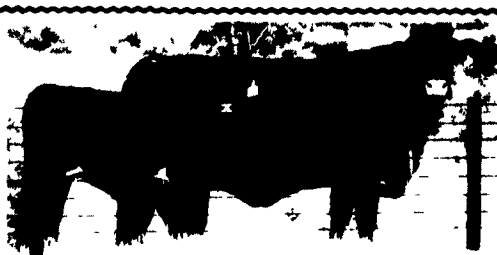
KAUFMAN'S

216-222-1856
Installation Available

5192 Mine Rd., Kinzers, PA 17535
Call Between 6:00 & 6:30 a.m. or p.m.
717-442-8486

A & J FENCING

All Types Of Fencing
*High Tensile * Post & Board
* Split Rail * Cross Board
* American Wire
* Chain Link * Etc.
We Also Do Post Driving



DURA FENCE

Call Today For Reasonable Prices On High Tensile - Split Rail - Board Fence
Free Estimates
R.D. #1 Box 210 Beaver Springs, PA 17812
Robert Martin
(717) 658-4470

7 LIVESTOCK EQUIPMENT

Cedar Fence Posts, 5"D, 8' L, \$4.75/each
717/354-3105.

FREE GUIDE -TENSILE FENCE, Strong -Lasting -Economical; also portable electric fence. Phone Order Supplies
1-800-245-6902 & (412-459-8991)

Jamesway 60' 12" auger feeder w/hay rack on top, \$300, 80' belt feeder, \$300. Both bunk feeders are excellent condition. 717/386-5696

Large exhaust louver w/ electric operator, brand new, \$100. Midstate Dairy Systems, DeRuyter, NY, 13052, (315)852-9591.

Large oil fired hot water heater, looks rough, works, well, \$150. Midstate Dairy Systems, DeRuyter, NY, 13052, (315)852-9591.

Large volumetric cableway feed drops. Brand new, \$15 each. Midstate Dairy Systems, DeRuyter, NY 13052, (315)852-9591.

"TRAILER HITCHES" PARTS... SERVICE.. INSPECTION. TOW DOLLIES "GLICKS" 717-656-7027.

LIGHTNING RODS

Materials Installation/Repair Free Estimates or Information mailed Call toll free:
1 800 532-0990

KILN DRIED SAWDUST & SHAVINGS

GRIZZLY'S
Millford, DE
800-355-4544

SAWDUST SHAVINGS HOG WOOD

Can pick up at Downtingtown, PA
ED VOGT & SON
Millington, MD 21651
410-928-3276

RUBBER MATS

for
Comfort Stalls, Free Stalls, Horse Stalls, Horse & Cattle Trailers, Hog Houses. Used Belting Material
Welsh Hill Farm Supply
Paul N. Brubacher
610-286-5298 or
Raymond 610-286-0168
Glenn 610-286-0706

ESCH'S FENCING

610-857-1676
QUALITY FENCING FOR HORSES; CATTLE; DOGS; CHILDREN AND PRIVACY.

All Types Fencing

Including P.V.C. Fencing

R.D. 1 Box 227
Gap, PA 17527

HIGH TENSILE FENCING

- Strong Long Lasting High Tensile Wire Fences
- For Livestock and Deer control

***Also Install:**

- Board Fencing
- Split Rail
- Vinyl Covered High Tensile for Horses
- PVC Fencing



T.E.L. INSTALLATIONS

Specializing in High Tensile Fencing
Installing Since 1980

TOM LANCASTER
2514 E-town Road • Elizabethtown, PA 17022

(717) 367-0612

1-(800) 251-1608



14 Peterson Dr., Storm Lake, Iowa 50588
712-732-2546
Manufacturer of quality, affordable hog and calf huts since 1963

Large Shelter By Port-A-Hut

INDIVIDUAL FARROWING AND CALF HUT BY PORT-A-HUT

All steel completely assembled, ventilated, 7 1/2' long, optional front doors, guard rails, pig rollers and pens. 15 huts can be stacked and loaded on a pickup.

Approximately 12' wide, 7' high, preassembled 7' sections giving you a choice of 7', 14', 21', 28' length. Can be hauled in a pickup. Approximately 2 hours set up time. 20 gauge wall protectors added on inside. Optional front closure. Built for livestock. Can be used for almost anything. Skids included. **New Size: 14' wide, 8' high, 14', 21', 28' length**

LEMMON FARM, 855 Alexander Spring Road, Carlisle, PA 17013
(717) 249-8434

KINGS COMFORT STALLS



Cow Mattress Sales & Installation
The Answer to Cow Comfort Cuts Bedding Cost

We Dare You to Compare Prices You Call... We Install

111 Christiana Pike
Christiana, PA 17509

King's Welding
Custom Loop Stalls
Gutter Grates
Pipe Barn Fencing

John King
Bill Gay
610-593-6959