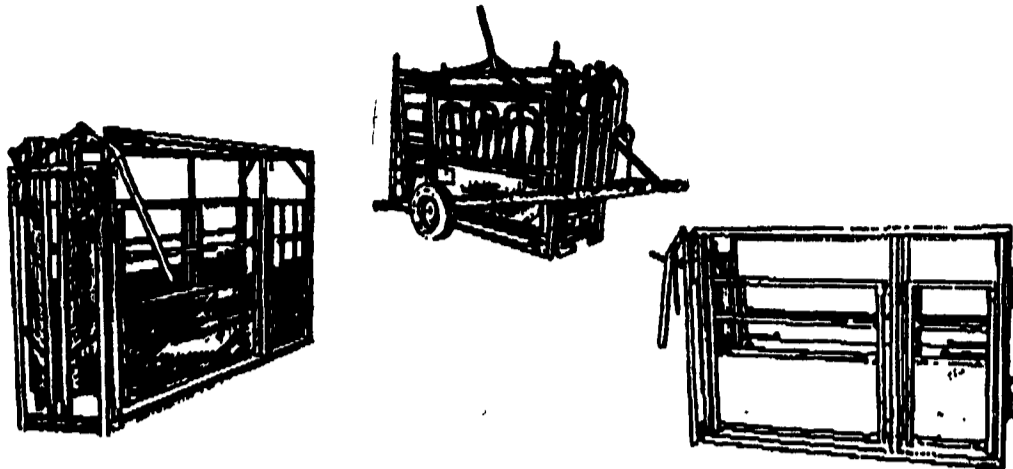


LIVESTOCK EQUIPMENT SPECIALIST

FREY BROS. MFG.

If cattlemen use it, Frey Bros. makes it.
Check with us for your livestock needs.



- Work Chutes
- Squeeze Chutes
- Trailers For Chutes
 - Head Gates
 - Dressing Chutes
 - Creep Feeders
- Portable Horse Stalls
 - Horse Paddocks
 - Grain & Hay Bunks
- Panels & Gates 4-5-6 Bar
- Panel Frame/Wire Gates
 - Portable Corrals
 - Alley Panels/Arches
 - Slide or Regular Arches
 - Loading Chutes
- Foot Trimming Tables
- Show/Sale Barns
- Portable Scales
- Round Bale Feeders

"CUSTOM MADE PRODUCTS A SPECIALTY"

Clayton Metzler, Salesman
717/786-2146 Office
717/786-7509 Fax

FREY BROS. INC.
372 Puseyville Road
Quarryville, PA 17566

ARE YOUR COWS HAVING FOOT PROBLEMS?

Pamper Them with Heavy Gooved Rubber Flooring For Those Heavily Traveled Areas. Placed over concrete to prevent cows foot problems



COW MATS Save Cows, Time & Bedding. One Piece up to 100 ft.

Bob Gabel

Route 16,
Chaffee, N.Y. 14030
Phone Collect 716-496-6025

Call Us For A Good Selection Of Milking Equipment - Priced Right!

- 5 HP Boumatic Vacuum Pump, complete
- (16) Westfalia ACR/SS Detachers, Late Model, Excellent Condition

We Ship Parts Daily UPS

24 HOUR SERVICE

ON THE FARM ROUTE SERVICE

Fisher & Thompson Inc.

DAIRY & MILKING EQUIPMENT SALES & SERVICE



Nu Pulse, Inc.



MAIN OFFICE
15 NEWPORT RD.
LEOLA, PA 17540
717-656-3307

MIFFLINBURG SALES CENTER
RD 2 BOX 265
WABASH RD.
MIFFLINBURG, PA 17844
717-966-3900

NORTHERN SERVICE CENTER
RD 1 BOX A-107
BELLEVILLE, PA 17004
717-667-6291

AMOS FISHER

RICK THOMPSON

MERLE RESSLER

FULL LINE DEALER

For...



Germania

CALL US FOR YOUR PARLOR PLANNING NEEDS!

SHARTLESVILLE FARM SERVICE

R.D. 1, Box 1392
Hamburg, PA 19526
Phone: (610) 488-1025



Milk is the real thing!

A 1st Class Team Together For 25 Years!



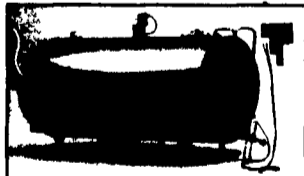
RUFUS BRUBAKER REFRIGERATION

And...

MUELLER
DAIRY FARM EQUIPMENT

Scroll-Compressor Technology

New in 1994



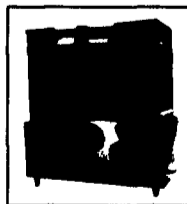
You may pay less for some dairy farm equipment... but it can cost you more!

Equipment cost is not the only cost of cooling milk

In the long run, total operating costs of a Mueller milk-cooling system are generally substantially less than those of "bargain-brand" milk-cooling equipment.

Example	Mueller	Competition
Cost of equipment	\$41,000	\$28,000
Cost of electricity @ .08 KW for 12,000 lbs milk/day for 10 years	\$17,550	\$22,850
Total operating cost for ten years	\$58,550	\$50,850
Savings	\$7,700	

Contact your Mueller distributor for further comparisons.



6 MONTHS FREE FINANCING

For Qualified Buyer See Us Today For Details!

Southern Service Center
76 Pumping Station Rd.
Quarryville, Pa.
717-786-1617
Vic Leininger

MAIN OFFICE

1048 North Penryn Rd.
Manheim, Pa. 17545

717-665-3525
Ken or Ed Brubaker

Northern Service Center
541 Frystown Rd.
Myerstown, Pa.
717-933-4711
Ken Kopp

★ Call Today For All Your New or Used Milk Tank And Refrigeration Equipment Needs!

31.0 CFM/Watt
2-Speed

TYPHOON

30000 CFM at 26" Coupled Test

25.6 CFM/Watt
Single Speed

- ✓ Heavy duty construction
- ✓ 100% steel construction
- ✓ 100% galvanized steel
- ✓ 100% stainless steel
- ✓ 100% aluminum
- ✓ 100% copper
- ✓ 100% brass
- ✓ 100% nickel
- ✓ 100% chrome
- ✓ 100% stainless steel
- ✓ 100% aluminum
- ✓ 100% copper
- ✓ 100% brass
- ✓ 100% nickel
- ✓ 100% chrome

ELIMINATE HEAT STRESS INCREASE PRODUCTION TODAY!

TUNNEL VENTILATION
BY E & D MOUNTAIN

E & D MOUNTAIN
RAY BURN, WISCONSIN

1-800-998-2398
For your closest dealer