

Public Auction Register

Closing Date Monday 5:00 P.M.
of each week's publication

TUES. DEC. 12 - Fed Cattle Sales. Carlisle Livestock Market, Inc. Exit 12 off I-81 turn S. then left onto Alexander Spring Rd. 249-4511.

TUES. DEC. 12 & 19 - Goat & Lamb Sale. Receiving 9AM Christmas Sale. Carlisle Livestock Market, Inc. Exit 12 off I-81 turn S. then left onto Alexander Spring Rd. 249-4511.

SAT. DEC. 16 - Mel's Stables. at 834 Wallace Rd., New Holland, Pa. From Rt. 23 in New Holland, go S. on Brimmer Ave., go 2 miles S. on New Holland Rd. to Hill Rd. Turn left on Hill Rd. Proceed 1.2 miles to sale on left. From Rt. 340 E. of Intercourse take New Holland Rd. 2.5 miles to Hill Rd., right on

Hill Rd. of sale on left. Mel Hoover, owner.

WED. DEC. 20 & THURS. DEC. 21 - Large Two Day Sale of Farm Equipment, Etc. Located 6 Miles South Of Chambersburg, Pa. One Mile East of Marion along Rt. 914, 1/4 East Off Rte. 81, Exit 4. Owners, Jarrold & Gloria Oaks. Marion Auction Service.

FRI. DEC. 22 - 1:30 PM State Graded Feeder Pig Sale. Carlisle Livestock Market, Inc., Exit 12 off I-81 turn South then left onto Alexander Spring Rd., 249-4511.

NOTICE

To assure that your Public Sale appears in the Public Sale Section we must have your advertisement by 5 P.M. Tuesday of each week's publication.

SALE EVERY TUESDAY

Graded Sale
1st Tuesday each month
2 P.M.
Horse Auction
2nd Saturday each month
1 P.M.



Marshall, Va.
703-364-1566

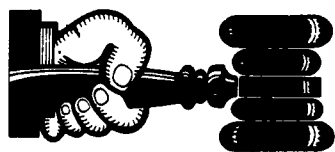
DEALER IN ALL KINDS OF LIVESTOCK

Also Crippled & Down Cattle

MARLIN S. IRWIN

Quarryville, PA
PH: 717-786-3016

Dairy and Livestock Sales



AUCTIONEER'S DIRECTORY

John D. Stauffer Auctioneers

1484 Mountain Road, Manheim, PA 17545
Fulltime Courteous Professional Auction Service
Since 1976
Real Estate • Farm Equipment • Antiques
Personal Property • Livestock
Phone 717-665-5099

Professional AUCTIONEERING
AARON E. MARTIN AUCTION SERVICE

410 W. Church Rd
Ephrata, PA 17522
(717) 733-3511
Real Estate • Farm Equipment
• Antiques • Household Goods
It doesn't cost to use our Auction Service...It Pays.
CALL TODAY!!

Office: 717/291-1542 Residence: 717/354-9534

JACK DELP

*Certified General Appraiser
Specializing in Farms & Land*

148 East Boud Street
New Holland, PA 17557

ROGERS COMMUNITY AUCTION INC.

PLEASE NOTE NEW SALE TIMES!

Located 8 Miles East Of
Lisbon, Ohio Or One Mile West Of
Rogers, Ohio On St. Rt. 154.

FRIDAYS

Produce, Egg, Miscellaneous Auction
Starts At 6 P.M.

Poultry Auctions Start At 6 P.M.

Doors Open At 7:30 A.M.

To Accept Consignments

Open Air Market All

Day And Evening

Doors Open At 7:30 A.M. To Rent

Market Spaces. Over 2.5 Miles Of

Outside Concessionaries And 30,000

Sq. Ft. Under Roof.

WEDNESDAYS

Farm Machinery

Consignment Auction

The 1ST WEDNESDAY EVENING

OF EACH MONTH

at 3 P.M. sharp.

We are open the preceding Tuesday of each sale day to check in consignments from 8 A.M. to 8 P.M. Handling farm machinery, lawn and garden equipment, tools, fire wood, cut lumber and related miscellaneous items. Five auctioneers operating simultaneously

Hay And Straw Grain

EVERY WEDNESDAY

selling truck

load lots by the bale or ton

starting at 1 P.M.

Barn Opens at 8 A.M. to Consign

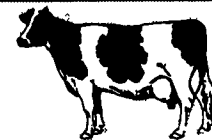
Jim and Ken Baer

Auctioneers and Managers

Phone (216) 227-3233 or (216) 227-3236

"Sales Every Week Since 1955"

NEW HOLLAND SALES STABLES, INC.



New Holland, Pa.
Located 12 Miles East of Lancaster, just off Rt. 23

WEDNESDAY, MAY 31, 1995

11:00 A.M. OPEN HEIFERS - BRED HEIFERS - SPRINGERS
MILK COWS 12:00 NOON FRESH & SPRINGER COWS

SEVERAL GROUPS OF OPEN AND BRED HEIFERS FROM LOCAL DAIRYMEN.

1 LOAD OF CANADIAN COWS INCLUDING SOME REGISTERED ANIMALS - ALL FRESH OF DUE JUNE AND JULY.

MERL BRENNEMAN - Update Fresh Cows.

DAVID KING - 1 Load Fresh Cows Mostly 1st and 2nd Calf.

DALE & JIM HOSTETTER - Each Sending a Load Of Top Fresh Cows 3 & 4 Year Olds With Good Udders.

MARVIN ESHLEMAN - 12 Head Northern Pa. Cows.
Registered Cows With High Production Records.
20 Head Of Springers From Western Pa.

Sales Managed By

New Holland Sales Stables, Inc.

Barn 717-354-1311 Fax 355-0706 Home 717-397-5538

Norman & David Kolb, Mgrs. 61L

SPECIAL HEIFER SALE

200 REGISTERED



400 GRADES

SAT., JUNE 3

At 10:00 A.M.

Featuring several Registered animals. All age heifers selling, Open Heifers - Bred Heifers - Springers - Service Age Bulls.

SPECIAL MENTION

Special Consignment of 25 large Springing Heifers, All A.I. Sired, 8 Registered, Balance I.D. Grades, Herd Avg. 21,982 - 967F. 10 Registered Heifers from Conn. Eastern A.I. Sired due July & August.

SALE ORDER: Grade Springers, Registered heifers - open and bred. Fresh heifers and bulls, grade open heifers.

Your consignments welcome

Call Lois Kolb - 717-397-5538 from 7:00 A.M. thru 10:00 A.M. with catalog information. Please have animals tested for out of state buyers.

All heifers pregnancy checked and inoculated at sale barn.

NEW HOLLAND SALES STABLES, INC.

Mgrs. Norman and David Kolb
Phone 717-354-4341



HORNING

Farm Agency, Inc.

Courteous Real Estate Services
Professional Auctioneers
State Certified Appraisers
Specializing in Farms and Land
Alvin Horning, Broker
Route 23, Morgantown, PA
(610) 286-5183

KREIDER, KLINE & GOOD

AUCTIONEERS

COMPLETE PROFESSIONAL AUCTION SERVICE
REAL ESTATE - FARMS & RESIDENTIAL
PERSONAL PROPERTY - ANTIQUES -
FARM STOCK SALES - LIQUIDATIONS

RANDAL V. KLINE LLOYD H. KREIDER
AUCTIONEER-REALTOR AUCTIONEER
717-733-1006 717-786-3394

ROY E. GOOD, JR.
AUCTIONEER
(717) 445-4309

ACTION AUCTION CO. INC.
GLENN S. FRAME

Farm Equip., Dairy Dispersal
Real Estate, Business Liquidations
Household Goods,
Construction Equip.
Certified Personal Property Appraisals
(610) 873- 0901

NELSON L. EBERSOLE AND CO.

FULL SERVICE AUCTIONEERS

REAL ESTATE - Farm sales, heavy equipment sales, business liquidations, sale preparation, equipment cleaning, catalogue auction sales, Professional service - 4 auctioneers on staff.

30 WEST MAIN STREET,
ANNVILLE, PA 17003
717-867-4304 717-867-5221
FAX 717- 867-5606
AU-001307-L

Auctioneer:
Steve Petersheim:
Steve Jr.



COMPLETE AUCTION SERVICE

Antiques
Household Goods
Farm Equipment
Real Estate
(610) 593-2828