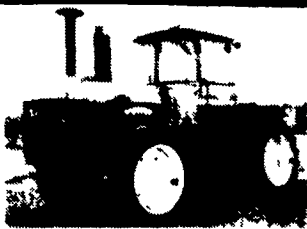
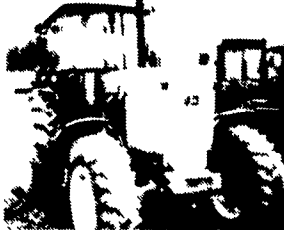




82 JD 8850, 300 HP, 4WD, C/A, 20.8x38 (Duals), 8670 Hrs., 3 Rem, 3 Point PTO, Drawbar, Complete Fresh Engine, O/H, Quad.
\$47,900



(Not Actual Photo)
80 JD 8640, 229 HP, 4WD, C/A, 18.4Rx38 (Dual) 3,600 Hrs., 2 Rem, Quad.
\$32,900



89 JD 4255/4560, 155 HP, MFWD, C/A (New 4560 Cab), 3200 Hrs. (20 Hrs. On New 4560 Engine) 18.4x38 (New R & C), 2 Rem, PS
\$46,200



81 Case 1690 (David Brown) 95 HP, 2 WD, C/A, 16.9x38 (New) 3300 Hrs., 2 Rem., PS w/JD 48 Loader (New Bucket)
\$15,300



84 JD 4450, 140 HP, MFWD, C/A, 20.8Rx38, 3200 Hrs., 2 Rem., PS
\$39,900



75 Case 2470, 185 HP 4 WD, C/A, 20.8x34, 4375 Hrs., 4 Rem., PS
\$15,900

- 92 JD 4455, 140 HP, MFWD, C/A, 20.8Rx38, 1600 Hrs. 2 Rem, PS.....\$54,000
- 89 JD 4255, 124 HP, MFWD, C/A, 18.4x38, 34-80 Hrs. 3 Rem., PS.....\$46,900
- New JD 6400, 85 HP, MFWD, C/A, 16.9x38, "O" Hrs., 2 Rem, Power-Quad.....\$40,900
- 84 JD 4850, 192 HP, MFWD, C/A, 20.8x38, 6211 Hrs., 2 Rem., PS.....\$37,000
- 94 JD 7400, 100 HP, MFWD, 4 Post, 18.4x38, 1000 Hrs. 2 Rem., Power Quad.....\$36,900
- 95 JD 6400, 85 HP, MFWD, ROPS, 16.9x38, "O" Hrs. 2 Rem., Power-Quad.....\$34,900
- 94 JD 6400, 85 HP, MFWD, 4 Post, 16.9x38, 500 Hrs., 2 Rem., Power-Quad.....\$30,500
- 89 JD 2955, 86 HP, MFWD, C/A, 16.9Rx38, 3,000 Hrs., 2 Rem., Creeper.....\$29,900
- 95 JD 5200, 40 HP, MFWD, 2-Post ROPS, 14.9x28, "O" Hrs., 3 Rem., Collarshift w/Creeper Gear.....\$21,900
- 76 JD 8630, 225 HP, 4WD, C/A, 24.5x23, 4400 Hrs. 2 Rem., Quad.....\$21,900
- 82 Ford TW-30, 165 HP, MFWD, C/A, 20.8Rx38, 3800 Hrs., 2 Rem, DP.....\$24,900
- Farm Hand 880B Tub Grinder w/Detroit 471 Power Unit.....\$14,900
- PM-245 DA Pettibone Loader, 4WD, Cab, 17.5x25, Automatic.....\$10,500
- "Used" FMC Tropic Breezes Wind Machines, Field Ready.....\$7,500
- IH 2200 Loader, 74" Bucket.....\$2,000
- New Holland 283 Wire Baler.....\$950

BEFORE YOU BUY ANY TRACTOR
NEW or USED 2WD or 4WD
CHECK the UNBELIEVABLY LOW PRICES at

DAVEY JOAN'S TRACTOR SUPER-MART

Location: Junction of NY 104 and NY 13
Williamstown, NY 13493

5/27 **1-315-964-2294**



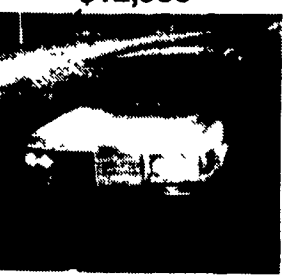
81 Ford TW30, 165 HP, MFWD, C/A, 18.4Rx38, 3200 Hrs., 2 Rem, DP
\$23,900



80 FD TW-20, 128 HP, MFWD, C/A, 18.4Rx38, 3225 Hrs., 2 Rem., DP
\$21,900



Ford TW-20, 128 HP, 2 WD, 20.8x38 ROPS, 3975 Hrs, 2 Rem, DP
\$12,900



81 Mercedes 300 SD, Diesel, 134,000 Miles, Automatic
\$7,000

SPECIAL OF THE WEEK



84 IH 5288, 180 HP, MFWD, C/A, 20.8Rx38, 3,000 Hrs., 3 Rein., 18F/6R.
Was \$32,900 SAVE \$3,000
NOW \$29,900



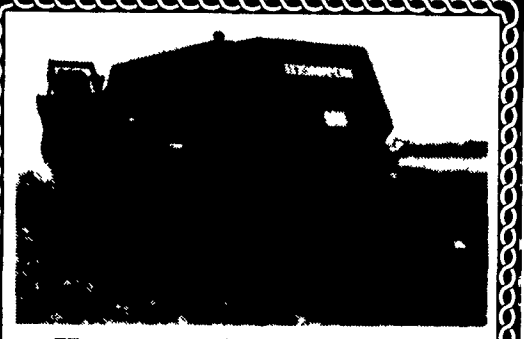
86 Freightliner Cab Over, 822,000 Miles, 0-92 Detroit Diesel, 13-Speed Fuller
\$20,000



86 Jeep Cherokee Diesel, 5 Speed, 4x4, 135,000 Miles, New Engine
\$3,800



"Used" Wass Rockpicker, Hopper Type, Field Ready.
\$4,850



Hesston 4600 Hay Baler
In Excellent Condition **\$8,700**
717-386-5696

TOBIAS EQUIPMENT CO., INC.
Halifax, PA 17032
Phone: 717-362-3132
1-800-362-3132

- FINANCING SPECIALS**
- 84 IH 5288, 180 HP, MFWD, 20" Mid mount, 18F/6R, low hours.....\$14,000
 - IH Model 510 6x20 DD grain drill w/ fertilizer & grape seed.....\$1,950
 - JD 8850, 3000 hours, 20.8x38 cast duals, 3 pt., PTO, 3 SCV's.....\$55,500
 - JD 770, new, turf, SCV, mid PTO, 300A blade.....\$14,000
 - JD 7900 MFWD, cab, loaded.....\$65,000
 - JD 940 New fold field cultivator, 25", new condition.....\$13,500
 - New JD 6800 2WD, open station, power quad trans., 2 SCV's.....\$26,400
 - New JD 750x18 No-till Drill, w/grape seed.....\$24,500

- USED GARDEN TRACTORS**
- JD 445 w/60" Mower, low hours, partial factory warranty.....\$7,650
 - JD 320 w/48" mower, low hours, 1 year factory warranty.....\$5,500
 - JD 175 w/38" Mower.....\$1,725
 - Cub 1811 w/48" Mower & 3 Pt. Hitch.....\$2,950
 - JD 160 w/38" Mower.....\$1,500

- COMBINES**
- Special Financing Rates:**
7.5% var. rate - 36 months
8.5% var. rate - 60 months
- JD 6600 rotary screen, hydro, air, w/215 rigid head.....\$17,000
 - JD 6620 hydro, level land, reversible feeder house, header height, clean, 3150 hrs, shed kept.....\$33,000

- 215 Flex head, good condition.....\$5,500
- JD 215 Flex Head, Needs Skid Plates...\$3,500
- (2) 653A Row Crop Heads.....\$2,500/each
- JD 444 Corn Head, Low Tin.....\$4,800
- JD 244 Head.....\$1,800

- SPRING SPECIALS**
- Krause 21' Wing Disc, 4900 series.....\$9,700
 - Gehl Model MX120 mixall.....\$1200
 - IH 10' transport disc.....\$800
 - NH Model 68 baler w/thrower.....\$900
 - Landall 20' wing chisel plow.....\$2,800
 - IH Chisel Plow, 10' pull type w/buster bar \$2,200
 - JD 875 4R Minimum Till Cultivator, Like New.....\$3,850
 - Athens 13' Disc, Model 200.....\$5,200
 - IH 6x16" Plow w/Hillside Hitch.....\$1,000
 - Krause Chisel Plow w/Harrow Attach., Model 3515, 20'.....\$5,500
 - Oliver Cockshutt, Model 246, 12', Chisel Plow Pull Type.....\$1,600
 - Amco Model T/J3 Terrace Disc.....\$4,000
 - JD 885 6R No-Til Rigid Cultivator, Like New.....\$7,800
 - Int. 45 18' Hyd Wing Field Harrow.....\$2,000

- MISCELLANEOUS - USED**
- JD 1008 Rotary Cutter, Good Condition \$3,800
 - GMC 14' Aluminum Walk-In Van, Dually \$3,600
 - 6x44 Mayrath Auger PTO & hyd. drive.... \$750
 - Kasco 6' Blade w/Power Angle, Will Fit Most Loader Frames, New Condition.....\$1,250
 - 2) 18x4x28 Industrial Tires On Rim, 80% Rubber.....\$300/Each
 - Gem Top, Topper For Pickup, 8' Box..... \$200

- MISCELLANEOUS - NEW**
- JD 380A Blade For JD 770.....\$1,550
 - JD 717 Rotary Cutter.....\$2,475
 - Westfield 51'x8" grain auger.....\$2,600

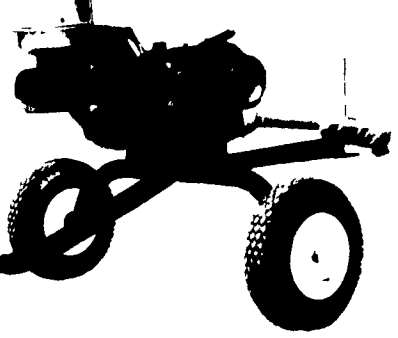
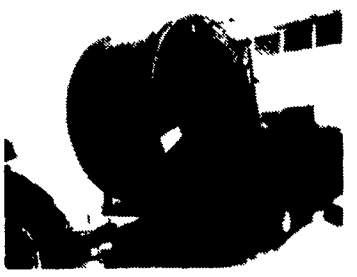
- MAY SPECIALS**
- Ford 5000.....\$6,500
 - JD AMT Utility Vehicle, Model 626, 2 Seater w/hyd. lift.....\$4,500
 - Ford 60" 3 pt. flail mower, never used....\$2,300
 - JD A, very nice condition, good paint.....\$2,500
 - NH 400 Bu Manure Spreader w/end gate.....\$5,500
 - NH 489 haybine, nice condition.....\$6,900
 - Landpride 48" Over Seeder.....\$5,000
 - JD 3 Section Drag Harrow, New Condition..\$1,250
 - JD 8300 21x7 Grain Drill, Used.....\$3,500

WE CAN HELP! CALL ANYTIME! OPEN 24 HOURS A DAY, 7 DAYS A WEEK.
FREE ESTIMATES. FREE ENGINEERING. FINANCING AVAILABLE.
IMMEDIATE DELIVERY. NEW & USED EQUIPMENT

TICO IRRIGATION SYSTEMS

NEW! TICO/ABI ENGINE DRIVEN HARD HOSE IRRIGATOR

available in many sizes to automatically irrigate from 15 to 190 acres. Quickly portable from area to area. Hose lengths from 395 to 1640 ft. Variable travel speed selection with automatic constant compensation provides uniform irrigation over entire length of pass.



PUMP, Don't Haul Your MANURE!

WITH TICO IRRIGATION and WRIGHT-RAIN PUMPS ...you can pump and spread in one day what would take a week to haul, regardless of field conditions

We Can Design & Install All Types Of Irrigation Systems: Solid Set & Frost Control, Trickle, Giant Sprinkler, Wheel Row, Center Pivot, Hand Move, Liquid Manure (Or Waste Water Disposal). Virtually All Makes Of Used & New Pipe, Couplers, Fittings, Gaskets, Pumps & Sprinklers Are On-Hand & Ready For Immediate Delivery.

ACRES IRR/RWK	ACRES IRR/RUN	TRACTOR HP	HOSE I.D.	IRR LENGTH	IRR WIDTH	OPTIMUM GPM	MODEL	PRICE
17	1.20		1.46"	571'	150'	61	Micro 44	\$5,522
48	3.8	30-40	2.1"	840'	196'	121	63AT720	\$12,280
41.5	4.9	30-40	2.1"	1150'	180'	97	63AT1050	\$16,790
48	4.6	35-50	2.38"	980'	204'	130	70AT885	\$16,890
50	4.6	35-50	2.5"	930'	205'	144	75AT820	\$16,990
68.3	5.3	50-75	3.0"	1000'	229'	208	90AT870	\$20,050
67.2	5.9	50-75	3.0"	1120'	229'	208	90AT984	\$20,750
61	7.0	60-85	3.0"	1250'	223'	175	90AT1250	\$25,250
90.7	6.8	75-100	3.75"	1180'	261'	273	110AT1050	\$25,930
90.2	7.6	80-100	3.75"	1310'	251'	273	110AT1180	\$30,400
88.7	8.3	80-100	3.75"	1440'	251'	273	110AT1312	\$30,950
135	7.8	100-120	4.00"	1200'	285'	448	120AT1050	\$30,880
176	7.5	100-120	4.20"	1150'	290'	482	125AT985	\$31,380
88.2	9.3	100-120	3.54"	1640'	247'	251	110AT1510	\$32,800
131	9.0	100-120	4.00"	1410'	277'	387	120AT1250	\$32,000
139	9.1	100-120	4.10"	1410'	282'	399	125AT1250	\$33,600

OFF-SEASON SPECIAL: 20% OFF Price Quoted Or Receive A FREE Pump With Any Reel Purchase (Except Micro 44)

TICO MANUFACTURING, INC.
IRRIGATION HEADQUARTERS EASTERN UNITED STATES
RT. 13, WILLIAMSTOWN, NY 13493
PHONE (315) 964-2214

IN VIRGINIA AREA CALL:
LLOYD INGRAM (703) 369-4486