

MAILBOX MARKET FOR SALE

48x48" heavy duty pallets in good condition 150 available at \$6 each Chester Co. 610-269-6777.

Ford 600 with front blade hyd 3pt plow two bottom good condition. Centre Co. 814-355-4914

John Deere forage wagon s&h forage wagon tandems rissler mixer box wagon chassis manure tank chassis. Cambria Co. 814-674-8498.

MF260 forage harvester 2r corn head 2r snapper head hay pickup electric controls new knives shear bar grindstone. Huntingdon Co. 814-448-2260.

1991 equipment trailer hd 28x8" blair gooseneck flatbed adjustable beaver-tail winch. Low miles, \$8900 new, asking \$5900 Sussex Co. 201-579-1226.

1990 case 1845c skid loader 930 hrs. Good machine has auxiliary hydraulics and dirt bucket runs good \$13300. Berks Co. 717-933-5307.

66 mercury comet cyclone 289 4spd red white interior runs needs body work garaged since 85 \$1000 OBO. York Co. 717-244-7763.

Pygmy goats billy kids 10wks doe 3yrs old good stock please leave message. Berks Co. 610-678-4397.

Ford tractor 801 diesel 45 horse 3pt a1 condition \$3900 new idea rake \$700 a1 condition wagon \$300 fair. Juniata Co. 717-436-9795.

16' brillion harrows danish tines \$800 ford 9n tractor sberman 2spd \$2200 four wheels and tires honda 4x4 300 four trax \$225. Luzerne Co. 717-864-3113.

Trade styled jdb wide front axle assembly for oliver 77rc wide front or ? call after 6. Montgomery Co. 610-287-9386

Nice size compost barrel on stand good condition \$39. Lanc. Co. 717-354-7115.

Bagged peanut hulls. Lanc. Co. 717-665-2829 or 717-898-8028.

Ford compact diesel tractor, 60in finish mower, ac lawn tractor 48in mower, snow plow, excellent condition. Chester Co. 610-469-6679.

Sliding glass door and frame complete, five feet wide, nice condition \$120. Evenings and mornings no Sunday calls. Lanc. Co. 717-548-4923.

Australian shepherd reg male red tri 15" at withers excellent disposition \$150. Puppies due June 1st all colors. Monroe Co. 894-8105.

Kawasaki fe250as01 7.9hp ohv engine, runs excellent, electric start, \$359, 3hp briggs runs good \$92.20 John Aaron. New Enterprise, PA. 814-766-2246 days, 766-3591 evenings.

Ac-wc ni#12 rake, on steel, nh#66 baler w/rebuilt wisconsin ve-4 best offer call after 6:30 p.m. Carroll Co. 410-756-2248.

34' hay or grain elevtor good condition \$650 OBO. 1939 dodge sedan \$2000. 5 quilts \$85 and \$95. Carroll Co. 410-857-4156.

9" grarhead southbend lathe 110 volt with c/jaw chuck and collect set ex cond \$950. New Castle Co. 302-328-1802.

Deer hauling crates, light weight slide gatc ends custom made good for hauling other animals also. \$10C each. Franklin Co 717-264-4395.

404 NH crimper field ready \$250. 18" papec culter \$250. Christ Lapp, 99 Peebles Road, Newburg, PA 17240. 5-7 p.m. Cumberland Co. 423-5503.

1 white scanon male kid born Feb. Lebanon Co. 717-949-2416.

Four alchamers no till planter units plus parts \$200 for all. Call after 5 p.m. Balto Co. 410-357-4672.

Elevator grar b bale 303 ac baler super a ih loader for k box teephone. Cecil Co. 410-287-8804.

Cub lowboy with 5' woods mower. Also snow plow and garden plow very good condition, asking \$2500 Middlesex Co. 908-329-3053.

16.9x28 tractor tire nearly new \$250. 32" ni hay and grain elevator \$600. Chester Co. 610-942-2657.

16 ft hurst trailer 10000 gwv ramps for skid loader, 6 sections scaffolding 2 20ft aluminum planks 3 nailers. Lanc Co. 717-399-1962.

Regulators for acetylene cylinders with hoses, new medium bird cage, propane gas tank with regulators for grill, camper. Chester Co. 610-347-1304.

2 10000lb dexter axles w/ hydraulic brakes with 8 new 9.50x16.5 tires \$650 each. Axle OBO. Blair Co. 814-793-4243.

8 westfalia manual milking parlor feeders, feed tanks w/piping \$2500. Milking parlor gates w/stalls \$500. Pipeline washer \$300. Northampton Co. 610-588-4931.

Phase coverter new 230v single phase to 230v three phase will run up to 7 1/2 hp motor \$800. Cumberland Co. 609-455-4315.

Crown rotary rock picker 5ft width pick up a1 condition ready to go work \$4000 firm. Berks Co. 610-367-8496.

AC-D-12 hardie 300 gallon air blast sprayer foley bel-saw 1055 foley 359 saw tooth setter 3 horse cooling compressor and fans 3500 apple crates. Col Co. 717-672-1148.

Gehl 800 recutter with long table and harvester feed rolls \$1500. Daniel Stauffer RD1 Box 805 Port Trevorton PA 17864.

Massey Ferguson 13ft grain head with power reel quick tach call evenings after 6 p.m. Juniata Co. 717-694-3584.

Welder narquette ac arc welder 20 to 200 amps good condition \$100. Del Co. 610-459-5059.

Minn molene uniharvester always kept in shed used on small farm very good plus belt dr corn sheller. After 7 p.m. Blair Co. 814-224-2778.

Implements for farmall cub corn planter \$150 single disks \$75 tandem disks \$425 ask for Sam. Chester Co. 610-286-9324.

#6 mh mower \$165 75 valiant 68910 wrecked \$150 mortada 7300 cumpiter wheel balancer takeup 17in wheel \$385 as is. York Co. 717-993-2358.

Like new hesston chopper model 7155 two heads call and we'll deal. Steuben Co. 507-522-4477 or 607-776-3234.

1946 dodge truck excellent parts truck or restore \$1000 1952 chevy 4-door \$350 1952 dodge truck parts truck. Cumb Co. 717-258-5213.

JD450B track loader with backhoe attachments 1991 f super duty diesel truck with 12' box body angus bull. St Marys Co. 301-862-2411.

Farmall 806, with cab, fast hitch, wf, gas, koyker k5 loader. 150hrs on rebuilt engine \$9600. Lanc. Co. 717-529-2285.

Reg holstein bull for lease 13 month old good pedigree. Lanc. Co. 717-548-4027.

Two fancy springing jersey heifers quiet vaccinated good udders \$575 each. Lanc. Co. 717-548-2490.

2 row hershey tobacco planter \$350 10ft brillion spring harrow \$600. Lanc. Co. 717-367-5148.

Hydraulic unit 11hp honda on wheels used 30hrs \$1100. Elam Beller, HC1, Box 198, Rebersburg, PA 16872. Centre Co.

Hardie crchard sprayer 500 gallon sstank ready to spray also good parts from sprayer no 2. York Co. 717-292-7651.

JD rake on steel wheels int 45 baler pto both in working condition call after 5 p.m. Midd Co. 908-297-1673.

Selling full line of farm machinery due to poor health JD 2940 JD620 call for more information. Huntingdon Co. 814-542-4235.

JD8300 drill 23x7 press wheels dd less than 400 acres also gauge wheels 3950 with road cart. Lanc. Co. 717-367-2567.

16ft jd forage wagon good condition also 273 new holland baler good condition. Lanc. Co. 717-859-u615.

562 belarus 4wd 218hrs cab \$10000 OBO. Kent Co. 302-284-4259.

Pocono campsite .83 acre mobile home access to 100ac lake call Francie Olver. Near Honesdale. \$10500. Wayne Co. 717-253-9566.

Corn header like new condition \$3000 OBO. 305 NI corn picker mounted. Fulton Co. 717-294-3407.

1979 ford fairmont sdn 33000 orig mi auto ps pb a/c. Chester Co. 610-255-4374.

New disks and bearings for ih grain drill never used 30x45 blue white striped tent \$500. Farmall cub pulley \$75. Berks Co. 610-683-8074.

Alpine goat kids 2 does \$75 each 1 buck \$60 good milk line. York Co. 717-292-4047.

Brown Swiss cows and heifers a1 breeding calf-hood vaccinated no Sunday calls. Wash Co. 301-739-3981.

Huber road maintainer model m52 hyd blade 12volt new rear tires manuals \$2500. York Co. 717-244-8702.

JD 1209 haybine real good rolls bar gears belt etc field ready to work \$900. Montgomery Co. 215-234-0924.

1984 ford f150 hd clutch 108,000 miles runs good body rust new spare. Frederick Co. 410-775-2287.

Wheel alignment stands and 2 turn tables good \$300. Chester Co. 610-383-1696.

Ford tractor 5610 series II 308 hrs 8 speed 62hp 34" tires dual remotes mf124 baler and thrower ni rake 5 ground wheels. Perry Co. 717-444-3066.

Hough h70d rubber tire front end loader at 4x4 cummins diesel fair shape \$4000. North'd Co. 717-758-3426.

lh No 9 horse drawn sickle bar mower complete rebuilt. Mervin Hoover RD#2, Box 305, Milton, PA 17847. Montour Co.

NH363 side throw manure spreader good shape \$1000 OBO. Franklin Co. 610-944-9276.

Uebler elec feed/mix cart \$300. Berks Co. 610-944-9276.

Round baler mf model 1560 same as vermeer call evenings. \$2495. Tioga Co. 717-353-7982.

Treadles singer sewing machine \$100 #40 oliver wooden beam bottom plow complete \$90. Five school desks choice \$95. York Co. 717-755-9418

Dual hydraulic box for 2cyl john deere 520-730. Bedford Co. 814-766-3386.

1 8n ford tractor good shape \$2000. Chester Co. 610-942-2668.

JD model #1 crimper field ready used Sept 94 \$100 OBO. York Co 717-235-5140.

Fringe top surrey wagon- te massey ferguson 35 rear wheels with mounted turf tires bobbed for horses Lehigh Co. 610-298-3017

1964 super sport chev factory 4speed 66000 orig mile 1983 buick century limited 5700 orig mile new Lebanon Co 717-273-3084.

Standardbred mare rides drives \$500. 250 ford baler good condition \$450. Horse walker needs motor \$50 York Co. 717-697-1779

311NH hay baler 170 kuck-er nh hay elevator pequesa hay wagon excellent condition. Mifflin Co 717-899-6002.

Genuine cashmere doe goats both parents have tested fiber. Beautiful colors ready to go middle June call anytime. Lebanon Co 717-964-3052.

New idea manure spreader, pto, good shape, two beautiful hampshire lambs, three months old Berks Co. 717-933-4311

Two 16 hole stainless steel hog feeders like new used twice \$200 each. Lanc. Co. 717-738-1327.

1500 strawberry flats \$25 each. Lanc. Co. 717-733-1048.

Irrigation pipe 30pcs 2"x40" w/sprinklers 40pcs 3"x20" David Smucker 137 Hollow Rd Quarryville PA 17566. Lanc. Co. 717-786-2946.

Grade holstein heifers fresh 10 due June, July, bull bred byd vaccinated free from Yonnie's \$999 \$1150. Lebanon Co 717-933-9186.

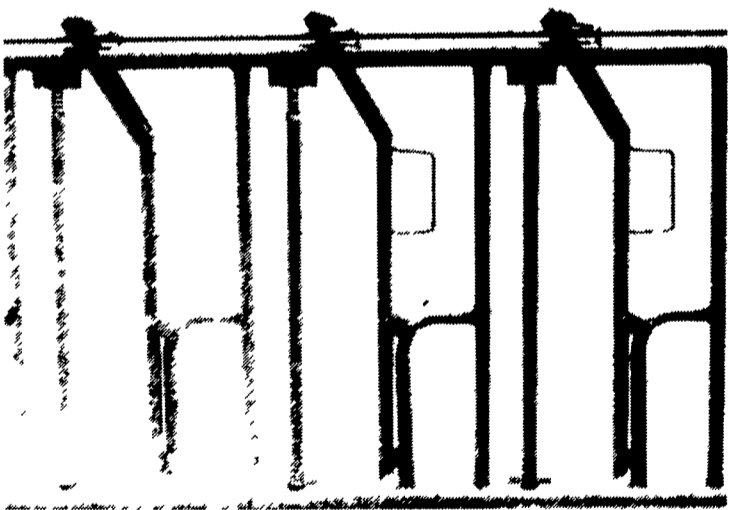
JD336 baler with #30 epetor \$3000 ni hay rake \$500 ni outdioner \$800 3 ton gravity bin \$500. Lanc. Co. 717-786-4421.

Ford NAA 600 tractor loader 3pt hitch pto \$3500 OBO. Lanc. Co 717-336-0688.



PAUL B. Zimmerman INC

HEADLOCKS



THREE SIZES AVAILABLE TO MEET ALL YOUR CATTLE HANDLING NEEDS EXTRA HEAVY CONSTRUCTION FEATURES

- * 1.9" O.D. High Yield Tube Top & Bottom Frame
- * 1" structural pipe on verticals & locks
- * All yokes lock on individual catches, no strain on control rod
- * Yoke stabilizer on large sizes
- * Unique design allows more head room
- * Neck bar can be removed or adjusted without tools
- * Individual lock on each yoke for holding one or more animals
- * No loose pins, or parts to get lost in manure or drop in pit

PAUL B. ZIMMERMAN, INC.

Call or Write For Additional Information And Your Nearest Dealer
 Hours Mon. Thru Fri. 7 to 5 Sat. 7 to 11
 295 Woodcorner Rd. Lititz, PA 17543-9165
 1 Mile West of Ephrata 717-738-7365



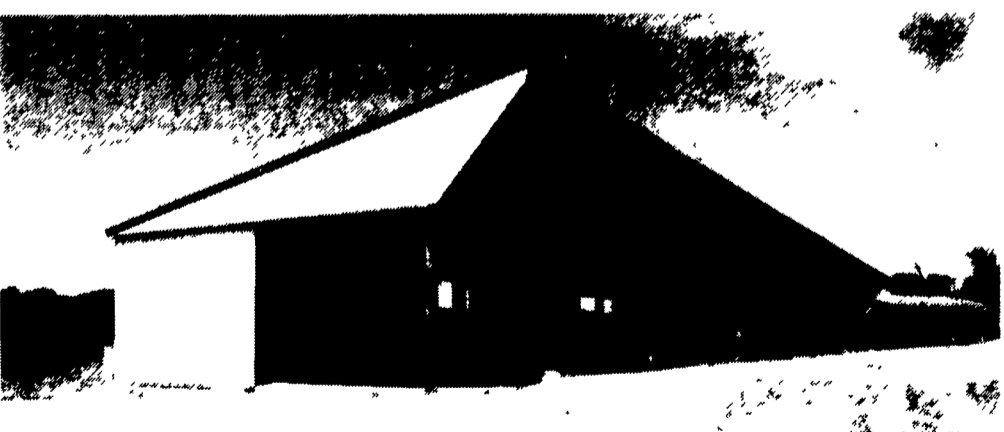
PRECISE CONCRETE WALLS, INC.

For All Your Concrete Walls And Construction Needs

Agriculture - Residential - Commercial

- Buildings • Basement • Floors
- Retaining Walls • Footer
- SCS Approved Manure Storage Pits
- All Types Of Flat Work

Specializing In **Manure Storage**
 Round or Rectangular, In Ground or Above Ground



Virginia Style Heifer Barn With 8' Deep, 180' Long, 12' Wide Slatted SCS Approved Concrete Manure Pit

Invest In Concrete, Quality Work That Will Last A Lifetime

CALL FOR **FREE** ESTIMATES AND SEE HOW AFFORDABLE CONCRETE WALLS CAN BE

CONTACT **ROY SENSENIG** 717-355-0726

PRECISE CONCRETE WALLS, INC.

601 Overly Grove Road, New Holland, PA 17557