

35 TRUCKS & TRAILERS

- 1993 Chevy Astro, CL, Ext. Blue, Vortec, V6, AT, Dual AC, PW, PL, ES, CC, 72,513 Mi.....\$12,600
- 1992 Ford F-150 P.U. Custom Blue, 6 Cl., AT, AMFMST, AC, 112,969 Mi.....\$8,900
- 1992 Chevy Lumina APV, Maroon, V6, AT, AC, CC, 73,730 Mi.....\$9,900
- 1991 Ford F-150 Ext-Cab, Gray, V8, 5 Sp, AMFMCAS, AC, 44,365 Mi.....\$10,900
- 1991 Bayliner Capri, 18 Ft. 10 H.P. Outboard Motor, 0 Mi.....\$6,900
- 1991 Ford Explorer XLT, 4 Dr. Black, 4x4, V6, AT, AC, PW, PL, CC, 69,997 Mi.....\$13,600
- 1991 Plymouth Grand Voyager LE, AWD, Silver, V6, AT, AMFMCAS, AC, PW, PL, CC, 60,901 mi.....\$9,900
- 1989 Chevy Camaro RS, White, V6, AT, AMFMCAS, PL, 85,939 Mi.....\$4,900
- 1988 Ford Hi-Top Conv., Gray/Silver, 7 Pass., V8, AT, AMFMCAS, AC, PW, PL, CC, 73,855 Mi.\$7,900
- 1988 Buick LeSabre, T-Type, 2 Dr., Black, V6, AT, AMFMCAS, AC, PW, PL, CC, 72,000 Mi.\$4,900
- 1987 Ford F-250 4x4, 6.9 Diesel, Blue, 8600 GVW, 4 Sp., AMFMCAS, AC, 103,406 Mi.....\$6,900

Brubaker's Auto Sales
Myerstown, PA
717-866-5237

TRUCKS

- '91 F150 4X4
XLT, A/C, A/OD, 4.9L
- '92 RANGER 4X4 SUPER CAB
XLT, A/C, 5 Spd., 1-Owner
- '93 RANGER 4X4 SUPER CAB
STX, 4.0L, A/C, 5 Spd.
- '94 CHEVY S/CAB
4X4, DRW, Turbo Diesel, A/C, 5 Spd. & More
- '93 GMC 1500 SLE
A/C V-8, A/OD, Low Miles
- '92 F150 4X4 XLT
V-8, A/OD, A/C, 1-Owner
- '92 F250 4X4 XLT
V-8, A/OD, A/C, 1-Owner
- '88 RANGER SUPER CAB
XLT, A/C, A/OD
- '92 DODGE DAKOTA
4X4 Sport, V-6, A/C
- '88 F150 4x4
S/Cab, XLT, V-8, A/C, Short Box

PRE-OWNED CARS

- '89 PROBE LX
A/C, A/OD, 1-Owner, 36,000 Miles
- '91 MUSTANG CONVERTIBLE
LX, 2.5L, A/OD, A/C
- '93 EAGLE VISION ESI
A/OD, A/C, Clean, Low Miles
- '91 CAVALIER RS SW
V-8, AT, A/C, Sport Wagon
- '90 CHEVY BERETTA
V-6, A/OD, A/C, 1-Owner
- '91 MERCURY CAPRI
5 Spd., Convertible, A/C, 39,000 Miles
- '93 TAURUS LX SW
V-6, A/OD, A/C, Loaded, 1-Owner
- '93 ESCORT LX SW
A/C, A/OD, only 20,000 Miles
- '90 MUSTANG LX
A/C, 2.3L, 5 Spd. 35,000 Miles
- '93 FORD T-BIRD LX
V-6, A/OD, A/C, 22,000 Miles

MPV'S

- '93 EXPLORER SPORT
V-6, A/OD, A/C, 1-Owner
- '92 EXPLORER XLT
4 Dr., 4.0L, A/OD, A/C
- '88 BRONCO II, XLT
A/C, 5 Spd.
- '94 GEO TRACKER
Convertible, 5 Spd., 10,000 Miles
- '93 JEEP WRANGLER
Sport, 6 Cyl., 5 Spd., Soft Top
- '92 CHEROKEE LAREDO
6 Cyl., 5 Spd., A/C, A/OD
- '92 WRANGLER SAHARA
6 Cyl., 5 Spd., A/C
- '93 PLYMOUTH GR VOYAGER
V-6, A/C, 27,000 Miles
- '92 AEROSTAR XL
V-6, A/OD, A/C, 46,000 Miles
- '94 AEROSTAR XLT
A/C, All-Wheel Drive, 3 to Choose

ENGLE-RISSINGER AUTO GROUP

RT 147 Just North of Halifax
Halifax, PA 17032
The Call 5 On US 1 800 242 8075
F 717 896 3421

(9) 1989 Frt. \$10,900/EA

315 Cummins, 9 Speed, Spring, 22.5 Spoke, AC

Hours: Mon-Wed Fri 8:30 to 5:30
Tues-Thu 8:30 to 5:30
Sat 8:30 to 1:30

300 Mack, 5 Sp, PS, AC, 24.5 Budd, 38 Rears, Camel Back.

1984 Mack R Model \$9,900

Huntingdon Equipment

Rentals Available

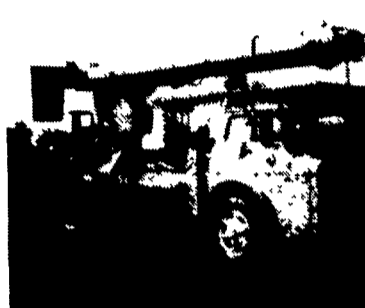
GOOD USED EQUIPMENT

Huntingdon Valley, PA • 215-672-9667 • 1-800-543-3833 • Eddie

SPRING SALE DAYS



Vermeer M-470 Trencher with backhoe. This is one of six units we have all ready to work. Starting at \$4,500.



Powers Bucket Truck two man lift with jib working ready.



International Pesser Digger This Unit is Ready To Work, Sale Price \$6,500



Pitman Boom with jib 15,000 pounds cap - 4 outriggers. Sale Price \$8,250.00 Won't Last Call Now!!



Need A Lift? We Have A Large Selection Of Boom Trucks Up To 14,000 lbs. Cap. Some With Post Diggers.



Bucket Trucks 28' to 65' Gas and Diesel. Call For Details.

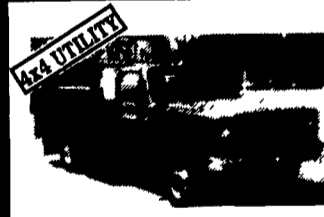
DIGGER DERRICKS/AERIAL BUCKETS/UTILITY EQUIPMENT



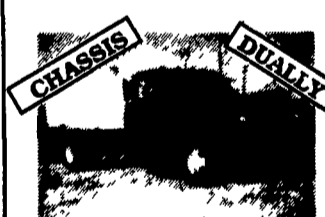
Bobby Gerhart's Truck World

Mon. - Fri. 9-8, Sat. 9-3

2400 E. Cumberland St.
Rt. #22 Lebanon, PA 17042
717-273-7995



88 CHEVROLET K3500
4x4 Utility, 454 V8, Auto, A/C, 9' Reading, Open Utility, Green, Excellent Condition #C260



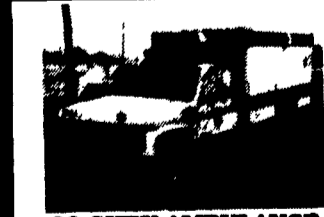
90 FORD SUPER DUTY
460, 5 Speed, 161" Wheelbase, Cab & Chassis, Blue, Nice Shape #F326



93 DODGE D2500 SC 4X4
Cummins Diesel, AT-OD, AC, Loaded, 33,000 Mi., Perfect Condition #D130



87 FORD F350
12 Ft. Stake Dump Int. Diesel, AT, 35,865 Mi. White #F339



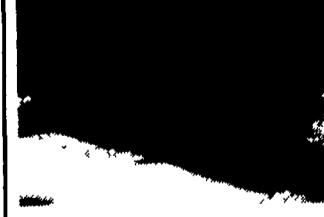
90 CHEV AMBULANCE
350 Auto, AC, PW, PL, Rear Box w/All Equip, All The Lights & 2 Gurneys, Ready To Go To Work, 56,987 Miles #C253



95 INT 444E ROLLBACK
Turbo-Diesel 5 Spd., AC, Loaded, Susp. Seat, 21,440 GVW, 19 ft. Wide Alum Jer-Dan Bed w/Independent wheel Lift & Tow Hitch



88 CHEV. 14' STEP VAN
350 Auto, Rear Roll Door, Dually, Red, 71,716 Miles #C250



86 FORD F350
8 Ft. Dump 460, 4-Speed, 45,978 Mi. Grey #F350



88 FORD F250 S.C. DUALY
7.3 Int. Diesel, AT, A/C, Loaded, 59,000 Mi. #F343



84 FORD F700 45' BUCKET TRUCK
Gas, Auto, Utility Boxes, 45' Boom, Outriggers, PTO or Electric Controls, Good Shape #F344



94 FORD F350 DUALY CREW CAB
7.3 Diesel, XLT, AC, AT, Chrome Wheels, Only 9,600 Mi., Factory Warranty, #F334



83 CHEV C3500
17 Ft. Rollback Rebuilt 454, 4-Spd., AC, PW, PL, Silverado, Excellent Shape #C401