

1974 Int. dump truck, 10' bed, 4WD, 21,000 GVW, no CDL, 5-speed, low range, runs good, body some rust, new inspection, good tires, 133K, \$3000 800-776-4383

1974 Int dump truck, 14' grain body, 30,000 GVW, air brakes, power steering, removable metal sides 1978 White diesel, tandem dump truck, 50,000 GVW, 18' aluminum body, nice (717)369-2540

1975 Freightliner 26' Roll-back Body Cabover 290 Cummins Engine, 13Sp Trans Tandem Rears P.S., A.C. \$7500 (201)625-1640.

1975 Mack Tri-Axle, 19 1/2' Aluminum Dump, 6 Speed Low Hole w/New 300 Motor \$25,000. (607)359-4124 or (607)359-2810

1975 White Road Boss, 350 Cummins, 13 speed, Jake Brake, 10x20, inspected, ready to work, \$4500, Trailmobile, sand blast sand tank trailer, \$2200 717-396-9718

1977 C-20 Bonanza Pick-Up 350 V8, Auto \$1300. Lancaster (717)665-7175.

1978 Ford F600 4-Wheel Drive 16' Flat Body Lift Gate Avail \$2900 (201)625-1640

1978 GMC Tandem 5&4 Speed Trans, Gas Engine, Cab & Chassis \$2500 (201)625-1640

1979 Chevy Box Van, 350 gas, new auto trans. \$2495 717/375-2505

1979 Ford F-350, dual wheel truck with Eby aluminum 9' cattle body in good condition 610-488-1884.

1983 Timpfe reefer, 42', NWD Super 30 thermoking unit, 11.24x5 tires, Budds, sliding tandem, swing doors, White Kem-light sides and roof inside, aluminum floor. (717)632-7079

1987 Ford Bronco XLT, 4x4, winch, PS, PB, air, cruise, good condition 717-653-2586

1987 Ford cargo, 7000, 20' flat bed, good condition, PA inspection, 6.6L Ford, 5x2 trans, 29,000 GVW, \$12,000 OBO 610-358-2354.

1987 Ford for parts, 6.9 diesel, 50K on truck, 10K on engine, certified, cab burned 215-572-7700

1988 C-30 9' dump truck, 350, dually, red, clean truck, toolbox, 10,000. (717)354-5939

1988 Dodge Ram Charger, 4x4, auto, 55K, \$9100; 1979 C-60 dump, 45K, \$7900 Both extra clean, very dependable Berks 610-926-3841

1989 Mitsubishi FE, 4cyl, automatic 14' box w/roll-up door Nice clean truck, w/89,000 miles, \$8,250 OBO (717)354-8070

1990 Ford F-250 XLT Lariat, 7.3 diesel, 70K, AT, PS, PB, PW, PDL, cruise, bedliner, running boards, bug shield, 2-tone brown, extra clean, must see, \$11,900 Call evenings 717-336-0860

1990 Peterbilt Conventional, High Rise, 350 CAT, 100,000 Miles, \$35,000 (610)384-6874

1991 Dodge 350 with 12' reefer box, \$8,000 (610)383-5764

1991 Isuzu NPR, automatic, 109'WB, C&C 13,250 GVW, 151,000 miles, lease maintained, new inspection \$9900, 717-859-3168

1994 F350 crewcab, dually, turbo diesel, auto, XTL package, camper package, limited slip, S/S wheels, bedliner, 6 year 75,000 mile warranty, \$25,500, (610)279-2932.

20' goose-neck machinery trailer, built very heavy, (2) 8,000 lb. axles, almost new, used less than 1,000 miles, \$4,300. (717)396-0356

HEAVY EQUIPMENT TRAILER

25 Ft. Tandem Axle, Dual Wheel Tagalongs.
25,800# and 50,000# IN STOCK.

Air brakes, 8' and 8 1/2' widths, 5' beaver tails, 12,000# drop leg jack, toolbox in A frame, solid oak decking, reinforced A-frame construction, anti-corrosive undercoating and 60" spring-assisted ramps. Shot blasted, primed and painted a safety yellow acrylic enamel. One year warranty on ALL parts.



Exceptional Quality

Starting At \$8,200

610-273-9200

Financing Available

YARNALL'S EQUIPMENT CO., INC.

Rt. 322, 303 E. Main St., Honey Brook, PA

Royal Truck & Equipment, Inc.

6910 Route 309 Coopersburg, PA 18036

(610) 282-4090
(800) 283-4090

Just Off I-78, Between Allentown & Quakertown Financing Pre-Approved



1987 Ford F700 10' Dumps, 7.6 Turbo Dsl, 5 Spd x 2, 30,000 GVW, New Hoist On Dump, Several To Choose From But Going Fast - Call Now - Other Dumps, Under CDL. Ready For Work NOW!



1989 GMC/Isuzu 4000 Dump/Strike, 4 Cyl. Turbo Dsl, 13,200 GVW, Auto, Florida Triks & Well Maintained (New Hoist & Body w/18 Mo Warranty) Economical & Ready To Work



1984-92' 14' Dump Stake Trucks Good Selection or We'll Build One To Your Specs. Several Ford & Int'l Chassis In Stock, They're Going Fast - Don't Wait



85 Ford F600, 10' Dump w/utility boxes (New Rugby Dump & Hoist w/warranty) 8.2 DSL, 5 Spd., PS, Hyd Brks, NO CDL, Runs & Looks Great. Call now for this one or let us build you one w/our chassis



1991-92 14' Hino & Mitsu Reefers, Dsl Engine 5 Spd & Auto, 13,500 to 22,300 GVW, Mitsus have 38" rear door and self contained carrier reefer unit w/heat cycle & standby Hino Reefer, runs off engine w/standby all have heavy duty boxes



1987 MACK MS300, 20' Kidron/Thermo King KDII Reefer, 6 Cyl., DSL, 5 Spd., P/S, A/B, Radio and Curb Side door Well maintained & exec cond thru out Reefer Unit Independent w/Stand By Call Now!

TWO ACRES OF ALL TYPES USED TRUCKS.
"IF WE DON'T HAVE IT, WE'LL GET IT"

LEFEVER BROS. CHEVROLET CHEVY TRUCKS GEO.

YOUR DIRECT LINE TO GENUINE GM PARTS

(800) 533-3837

When you call the number listed above, you'll reach our wholesale parts specialists, who can help you keep your GM repair work moving quickly.

Ask about:

- Specializing in GM Medium Duty Trucks, Current and Obsolete.
- \$500,000 Parts Inventory.
- Parts Locator for Those Hard to Find Items.
- We Ship Anywhere, Local Delivery Available.
- Experienced, Knowledgeable Personnel.

Mon., Tues., Thurs., Fri. 7:30 a.m.-4:30 p.m.

(717) 432-9697

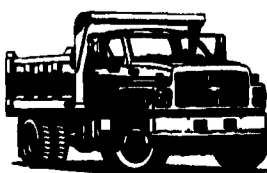
Weds. 7:30 a.m.-8:30 p.m.

Quality Dealer Since 1921

Major Credit Cards Accepted

406 U.S. Rt. 15, Dillsburg, PA 17019

GM Goodwrench Service

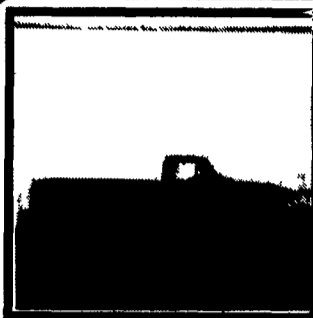


Kodlak Chevy Trucks CAT DIESEL POWER

TRUCKS

The Best Selection of New & Used Trucks Is At Pennsylvania's Leading Truck Source

NEW HOLLAND FORD



NEW 1995 FORD

F-150 PICKUP

6 cylinder engine, 5-speed transmission, power steering, power brakes, air conditioning, FM/AM stereo, chrome rear step bumper, sliding rear window & more! #F4338

NOW ONLY \$12,993



NEW 1995 FORD

E-150 CARGO VAN

4.9 liter 6 cylinder engine, automatic trans, power steering & brakes, FM/AM stereo, sliding side cargo door, swing-out side and rear glass, bucket seats & much, much more! #F4433

NOW ONLY \$15,699

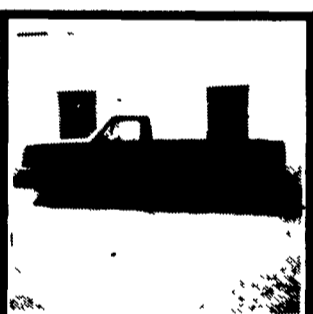


NEW 1995 FORD

F-150 4X4 PICKUP

4.9 liter 6 cylinder engine, automatic trans- mission, four wheel drive, power steering & brakes, FM/AM stereo, argent rear step bumper, cloth seats, pinstripe and much, much more! #F4738

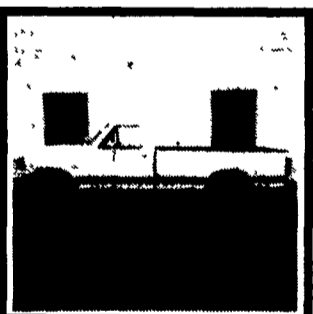
NOW ONLY \$17,649



1989 FORD F-150 4X4

302 V8 engine, automatic transmission, air conditioning, pwr. windows & locks, cruise, tilt, stereo cassette, XLT, A real nice truck for work or play! #F4694A

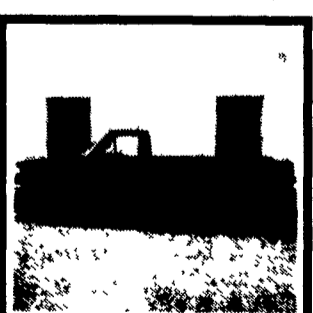
NOW ONLY \$9950



1990 FORD F250 PICKUP

V8 engine, automatic transmission, air conditioning, FM/AM stereo, cruise control, tilt steering, low miles and ready to work for you! #F4358B

NOW ONLY \$11,987



1994 FORD F150 PICKUP

V8 engine, automatic transmission, air conditioning, FM/AM stereo, one owner, low miles! Why buy new? #F460A

NOW ONLY \$14,975

New Holland FORD & ISUZU TRUCKS
Route 23, New Holland PA
717-354-4901 • 800-642-8605