

Public Auction Register

Closing Date Monday 5:00 P.M.
of each week's publication

NOTICE

To assure that your Public Sale appears in the Public Sale Section we must have your advertisement by 5 P.M. Tuesday of each week's publication.

FRI. NOV. 24 - 1:30PM. State Graded Feeder Pig Sale. Carlisle Livestock Market, Inc., Exit 12 off I-81 turn South then left onto Alexander Spring Rd., 249-4511.

DECEMBER

SAT. DEC. 2 - Mel's Stables, at 834 Wallace Rd., New Holland, Pa. From Rt. 23 in New Holland, go S. on Brimmer Ave., go 2 miles S. on New Holland Rd. to Hill Rd. Turn

left on Hill Rd. Proceed 1.2 miles to sale on left. From Rt. 340 E. of Intercourse take New Holland Rd. 2.5 miles to Hill Rd., right on Hill Rd. of sale on left. Mel Hoover, owner.

TUES. DEC. 5 - 8PM Feeder Cattle Sale. Carlisle Livestock Market, Inc., Exit 12 off I-81 turn South - then left onto Alexander Spring Rd. 249-4511.

WED. DEC. 6 - 6:30PM Winross Trucks & Toys. A&C Diffenbach Auction, Inc. 100 W. Jackson St., New Holland, Pa.

FRI. DEC. 8 - 9AM Farm equip, tractors & farm supplies. A&C Diffenbach Auction, Inc. 100 W. Jackson St., New Holland, Pa.

FRI. DEC. 8 - 1:30PM State Graded Feeder Pig Sale. Carlisle Livestock Market, Inc., Exit 12 off I-81 turn South then left onto Alexander Spring Rd., 249-4511.

TUES. DEC. 12 - Fed Cattle Sales. Carlisle Livestock Market, Inc. Exit 12 off I-81 turn S. then left onto Alexander Spring Rd. 249-4511.

TUES. DEC. 12 & 19 - Goat & Lamb Sale. Receiving 9AM Christmas Sale. Carlisle Livestock Market, Inc. Exit 12 off I-81 turn S. then left onto Alexander Spring Rd. 249-4511.

SAT. DEC. 16 - Mel's Stables, at 834 Wallace Rd., New Holland, Pa. From Rt. 23 in New Holland, go S. on Brimmer Ave., go 2 miles S. on New Holland Rd. to Hill Rd. Turn left on Hill Rd. Proceed 1.2 miles to sale on left. From Rt. 340 E. of Intercourse take New Holland Rd. 2.5 miles to Hill Rd., right on Hill Rd. of sale on left. Mel Hoover, owner.

WED. DEC. 20 & THURS. DEC. 21 - Large Two Day Sale of Farm Equipment, Etc. Located 6 Miles South

Of Chambersburg, Pa. One Mile East of Marion along Rt. 914, 1/4 East Off Rte. 81, Exit 4. Owners, Jerrold & Gloria Oaks. Marion Auction Service.

FRI. DEC. 22 - 1:30 PM State Graded Feeder Pig Sale. Carlisle Livestock Market, Inc., Exit 12 off I-81 turn South then left onto Alexander Spring Rd., 249-4511.

DEALER IN ALL KINDS OF LIVESTOCK

Also Crippled & Down Cattle

MARLIN S. IRWIN

Quarryville, PA
PH: 717-786-3016

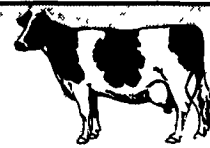
Dairy and Livestock Sales

NEW HOLLAND SALES STABLES, INC.

New Holland, Pa.
Located 12 Miles East of Lancaster, just off Rt. 23

WEDNESDAY, MAY 24, 1995

11:00 A.M. HEIFERS
12:00 NOON FRESH COWS & SPRINGERS



SEVERAL GROUPS OF OPEN AND BRED HEIFERS FROM LOCAL FARMS.

SPECIAL MENTION - 25 OPEN HEIFERS FROM 1 DAIRY, ALL A.I. SIRED 3 TO 10 MOS. OF AGE.

LEROY SMUCKER - CANADIAN FRESH COWS AND SPRINGERS INCLUDING

Reg. 2 Yr. Inspiration Just Fresh. Dam 19,549M, 664F
Reg. 2 Yr. Matador Due July
Reg. 2 Yr. Rookie Due July

Several Fresh Grades Milking up to 90 Lbs.
10 Springers Due June and July.

25 COWS FROM 1 HERD. ALL FRESH PAST 3 WEEKS.

MARVIN ESHLEMAN

1 Load of Bradford County Cows - Several Registered Young Animals - Good Type - High Production.

FRESH COWS FOR MERL BRENEMAN, JIM AND DALE HOSTETTER.

DOUG JARRELL SENDS 35 CANADIAN HOLSTEINS INCLUDING:

- ✓ 4 Fresh A.I. Sired Cows From 1 Herd and 6 Springers Due Within 2 Weeks.
- ✓ A Tall 4 Year Old Sells Due Sale Time. She Has Just Completed A 305 Day Record Of 21,522 Lbs. With 3.6% Fat.
- ✓ A Good Selection Of Heifers & Cows Due June & July Also Sell.
- ✓ A 3 Yr. Old Sells Due Sale Time With A Finished 308 Day Record of 17,586 lbs. 3.64% Fat.
- ✓ A P.B. Jethro Dau. Sells Due July 1 to Peartome Jackpot.

Sales Managed By

New Holland Sales Stables, Inc.

Bldg 717-351-1311 Fax 353-0706 Home 717-397-5538

Norman & David Kolb, Mgrs. 61L

CONSIGNMENT HORSE SALE SPECIAL DRAFT HORSES & MULES WELL MATCHED TEAMS

LOADS OF STANDARD BRED DRIVING HORSES

also

RIDING & SLAUGHTER HORSES

SATURDAY, MAY 27, 1995

11:00 AM Sharp

Tack To Be Sold At 8:30 AM

Middleburg Livestock Auction Sales, Inc.
Rt. 555 3 miles East of Middleburg, Pa.
5 miles West of Selinsgrove, Pa.

For information call:

717-837-2222 or 717-837-2512

Middleburg Livestock Auction Sales, Inc.
RR #3, Rt. 522 Middleburg, PA

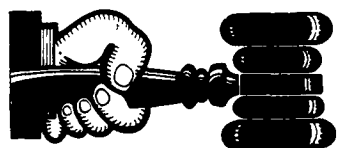
Aaron Reiff (agent)
922-1490

Clarence Shirk & Dave Imes, Auctioneers

Terms: Cash

Trucking Available

Restaurant Open



AUCTIONEER'S DIRECTORY

Office:
717/291-1542

Residence:
717/354-9534

JACK DELP

Certified General Appraiser
Specializing in Farms & Land

148 East Bond Street
New Holland, PA 17557



John D. Stauffer

Auctioneers

1484 Mountain Road, Manheim, PA 17545

Fulltime Courteous Professional Auction Service
Since 1976

Real Estate • Farm Equipment • Antiques
Personal Property • Livestock
Phone 717-665-5099



HORNING

Farm Agency, Inc.

Courteous Real Estate Services
Professional Auctioneers
State Certified Appraisers
Specializing in Farms and Land
Alvin Horning, Broker
Route 23, Morgantown, PA
(610) 286-5183



KREIDER, KLINE & GOOD

AUCTIONEERS

COMPLETE PROFESSIONAL AUCTION SERVICE
REAL ESTATE - FARMS & RESIDENTIAL
PERSONAL PROPERTY - ANTIQUES -
FARM STOCK SALES - LIQUIDATIONS

RANDAL V. KLINE LLOYD H. KREIDER
AUCTIONEER-REALTOR AUCTIONEER
717-733-1006 717-786-3394

ROY E. GOOD, JR.
AUCTIONEER
(717) 445-4309

Auctioneer:
Steve Petersheim:
Steve Jr.



COMPLETE AUCTION SERVICE

Antiques
Household Goods
Farm Equipment
Real Estate
(610) 593-2828

AARON E. MARTIN AUCTION SERVICE

410 W. Church Rd
Ephrata, PA 17522
(717) 733-3511

Real Estate • Farm Equipment
• Antiques • Household Goods
It doesn't cost to use our Auction Service...It Pays.
CALL TODAY!!

NELSON L. EBERSOLE AND CO.

FULL SERVICE AUCTIONEERS

REAL ESTATE - Farm sales, heavy equipment
sales, business liquidations, sale preparation,
equipment cleaning, catalogue auction sales,
Professional service - 4 auctioneers on staff.

30 WEST MAIN STREET,
ANNVILLE, PA 17003
717-867-4304 717-867-5221
FAX 717-867-5606
AU-001307-L

ROGERS COMMUNITY AUCTION INC.

PLEASE NOTE NEW SALE TIMES!

Located 8 Miles East Of
Lisbon, Ohio Or One Mile West Of
Rogers, Ohio On St. Rt. 154.

FRIDAYS

Produce, Egg, Miscellaneous Auction
Starts At 6 P.M.

Poultry Auctions Start At 6 P.M.

Doors Open At 7:30 A.M.

To Accept Consignments

Open Air Market All

Day And Evening

Doors Open At 7:30 A.M. To Rent
Market Spaces. Over 2.5 Miles Of
Outside Concessionaries And 30,000
Sq. Ft. Under Roof.

WEDNESDAYS

Farm Machinery

Consignment Auction

The 1ST WEDNESDAY EVENING
OF EACH MONTH
at 3 P.M. sharp.

We are open the preceding Tuesday of
each sale day to check in consignments
from 8 A.M. to 8 P.M. Handling farm
machinery, lawn and garden equipment,
tools, fire wood, cut lumber and related
miscellaneous items. Five auctioneers
operating simultaneously

Hay And Straw Grain

EVERY WEDNESDAY

selling truck

load lots by the bale or ton

starting at 1 P.M.

Barn Opens at 8 A.M. to Consign

Jim and Ken Baer

Auctioneers and Managers

Phone (216) 227-3233 or (216) 227-3236

"Sales Every Week Since 1955"

