

REAL ESTATE AT AUCTION

"King of the Hill"
Overlooking Your Castle in Loganton

Saturday
June 17
1995
1:00 P.M.



Roan Inc. will be offering a 4 Bedroom Victorian home in the borough of Loganton including 5 acres. A 63 acre parcel of woodlands overlooking Loganton and an adjacent 10 acre parcel of woodland. Both in Green Township!

OPEN HOUSES

Sunday, May 21, 12-4 pm — Tuesday, May 23, 3-6 pm

DIRECTIONS: Main Street, Loganton - 3rd house east of Ramm's Funeral Home - watch for signs

TERMS: Executors reserve the right to accept or reject any or all bids with immediate confirmation 20% deposit required day of sale Settlement made 30 days from sale date upon delivery of clear deed 1% realtor participation fee offered

NOTE: We will be selling the contents of the house, which includes many antiques, the same day starting at 10 a.m.

For more information contact Michael at

Bob, Chuck & Rich
ROAN, INC.
Real Estate & Appraisers
1000 777 A
RR 4 Box 118 Loganton PA 17228
717-494-0170 • 800 955 ROAN
FAX 717-494 1911 (outside PA)

Regina Douy Estate
Executors Herb Douy
Madeline Ingram
Mildred Wolfe
Lawyer Marshall & Associates



PUBLIC AUCTION

Valuable Real Estate, Contractor Tools, Farm Equipt., Beef Herd
Sat. June 3, 1995
9:00 A.M.

Real Estate - 11:00 A.M.

Located at 171 W. Airport Road, Manheim Twp., Lititz, PA. From Lancaster-501 N. to West Airport Rd. turn left, go approx. 1/2 mile to property on left.

Real estate consists of approx. 10 acres of which 8 acres are meadow enclosed with h-tensile fence, 2 ponds and stream. Stone 2 1/2 story house with frame addition, mod. kit., dining rm., lg. family rm. w/stone fireplace, laundry, office, 3 bdrm (1 master), 1 1/2 baths, hardwd. floors and lg. sun porch, oil hot water heat, city water and sewer. Out buildings include 1 1/2 story garage, stone spring house, and 40'x90' pole shed w/cement floor. This property is ideally situated in Man. Twp. close to school, church, main hwy. and airport. Zoned agriculture at present time. Ideal for out of town business or someone who loves the outdoors and needs a little more room.

You may view property by appt. 665-6684.
TERMS: 10% day of sale, balance by July 3, 1995

Contractor tools, office furniture, 84 Isuzu 4 W.D. PU, 94 Pequea trailer w/ramps, 91 JD 855 D. hydro loader, 60" belly mower (low hr-like new), 5 Angus cows w/calves at side, 1 Angus bull out of Scotch Cap. Watch for full listing.

Sale by
Jon W. Robbins
Jon Gruber Atty

WOLGEMUTH AUCTION SERVICE
BOB Lic. # 1534 Dennis
Ph. 665-6684 or 733-8192
John Hess (Appren.)

PUBLIC AUCTION

OF VALUABLE COUNTRY REAL ESTATE 1 1/2 STORY DWELLING ON 1.15 ACRES OF LAND, BART TOWNSHIP, LANCASTER COUNTY

THURS., JUNE 22, 1995
7:00 p.m.

LOCATED AT: 1917 Mine Road, Paradise, Bart Township, Lancaster County, PA. From Route 41 & Route 30 intersection in Gap, take Route 41 South to Route 741, turn right over RR bridge to stop, turn left on Mine Road to property, approximately 5 miles on right.

★ REAL ESTATE ★

Real estate consists of a 100+ year old, 1 1/2 story dwelling on a 1.15 acre level tract of land. The dwelling contains 4 or 5 bedrooms, living and dining rooms w/hardwood floors, modern eat-in kitchen, full bath, enclosed back porch and covered front. There is a full basement with concrete floor and outside entrance. The dwelling is heated with oil, hot air furnace, with a wood/coal stove backup unit. Well water and sewage disposal systems are on site. There are two utility barns included.

★ OPEN FOR INSPECTION ★

THURSDAY, APRIL 27, 4-6 pm & SATURDAY, APRIL 29 - 1-3 p.m. CALL AUCTIONEERS FOR COMPLETE BROCHURE OR PRIVATE SHOWING.

AUCTIONEER'S NOTE: This well kept, secluded property deserves your attention; super setting amidst farmland.

PAYMENT TERMS: Real Estate, 10% down payment day of auction. Balance due by July 31, 1995. Buyer pays all real estate transfer taxes. Personal Property to be paid in full day of auction with cash, PA or approved check.

BROKER PARTICIPATION: 1% fee available for successful buyer prior to June 20, 1995. Registration letter must include prospective buyer's signature. Brokers call Auctioneers for details.

Auction Conducted by:
MARY M. BRAUNGARD
Michael Bull, Attorney

Auction Conducted By:



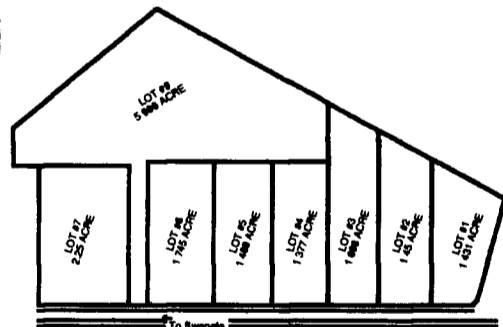
Stephen J. Barr - AU-002422-L
James S. Davis Jr. - AU-002421-L
Gap, PA 17527 • (717) 422-9221

Announcements day of auction take precedence over previous advertising.

8 CHOICE BUILDING LOTS
30.8 ACRE FARM LAND

PUBLIC AUCTION
Sat., May 27, 1995
Auction Time 1:00 P.M.

LOCATION: From Lewisburg take Route 45 West through Mifflinburg to just before Hartleton, turn left at Christ's United Lutheran Church onto SR 3005, go 7/10 mile turn right onto SR 3008 go 1/2 mile to Swengle, turn right on Orchard Road go 1/2 mile to lots on left (watch for signs). Union Co., Lewis Township.



30.8 Acres Farm Land

in Swengle with frontage on two roads and a stream. Public sewer.

NOTE: All lots being offered at auction are perked and approved building lots and sewage permits are ready to be issued. All 8 lots are choice country lots with a great view. Don't miss this opportunity to purchase a beautiful lot to build your dream house. Be prepared to buy, owners plan to sell! For further information contact the owner at (717) 336-2690. Auction to be held on site.

TERMS: 15% down payment on auction day, balance at final settlement on or before July 14, 1995.

ATTORNEY: Michael T. Hudock,
(717) 966-3006.

Auction By
Eugene K & Linda S. Martin
(717) 336-2690



410 West Church Rd.
Ephrata, Pa. 17522
(717) 733-3511

Public Auction Register

Closing Date Monday 5:00 P.M.
of each week's publication

MON. JULY 3 - 9:30AM Estate Farm Auction. Real Estate-12NOON. 125 acre farm. Farm machinery, tools, household. From Rt 220 take Rt 30 E to Everett. Take Rt 26 S turn R at Everett Bank, stay on Rt 26S to fork in Rd (3 mile) bear L onto Township Rd, go 2 mile to farm. Joseph E. Paske Estate. Ron J. & Ron S. Gilligan Auctioneers.

WED. JULY 5 - 6:30PM Winross Trucks & Toys. A&C Diefenbach Auction, Inc 100 W. Jackson St., New Holland, Pa.

FRI. JULY 7 - 1PM Pig State Graded Sale. Westminster Livestock Auction, Westminster, MD.

SAT. JULY 8 - 9AM Loc: Al Starr Building, Willow Street, Pa. take Rt. 272 N through Willow Street behind the fire house. Ant, HH goods. Terms Joseph & Caroline Karabaich. Kreider, Kline & Good, aucts.

SAT. JULY 8 - 9AM Household goods, antiques, col-

lectibles, dolls, trains, Hess trucks, coins, guns, riding mower, real estate. 1 mile E. of Blue Ball turn off Rt. 322 S. on 897 first house on right, 1214 Sprinville Road, East Earl Twp, Lanc. Co., Pa. By Harold L & Helen G. Reasler. Robert E & Jeffrey R. Martin, aucts.

TUES. JULY 11 - Fed Cattle Sales. Carlisle Livestock Market, Inc. Exit 12 off I-81 turn S. then left onto Alexander Spring Rd. 249-4511.

THURS. JULY 13 - 7PM - 4 Building lots located along Hedge Rd., East Nantmeal Twp, Chester Co. By Francis J. Braconaro.

FRI. JULY 14 - 9AM Farm equip, tractors & farm supplies. A&C Diefenbach Auction, Inc. 100 W. Jackson St., New Holland, Pa.

FRI. JULY 14 - 1:30PM State Graded Feeder Pig Sale. Carlisle Livestock Market, Inc., Exit 12 off I-81 turn South then left onto Alexander Spring Rd., 249-4511.

FRI. JULY 14 - 7 PM Hors Sale. New Holland Sales Stables, Inc, 101 W. Fulton St., New Holland, Pa.

TUES. JULY 18 - 7PM Feeder Pig Sale, at Westminster Livestock Auction, Westminster, Md.

TUES. JUL. 18 - 8PM Feeder Cattle Sale. Carlisle Livestock Market, Inc., Exit 12 off I-81 turn South - then left onto Alexander Spring Rd. 249-4511.

WED. JUL. 19 & THURS. JUL. 20 - Large Two Day Sale of Farm Equipment, Etc. Located 6 Miles South Of Chambersburg, Pa. One Mile East of Marion along Rt. 914, 1/4 East Off Rte. 81, Exit 4. Owners, Jerrold & Gloria Oaks. Marion Auction Service.

SAT. JULY 20 - 9AM Consignment auction, harness & saddle industrial equipment. Lititz Harness Shop, Lititz, PA. Leather, tools, machinery, hardware, contents of Forest View Harness Shop. Sale by Martin Auctioneers. To consign: 717-445-5956 or 717-626-7650.

SAT. JULY 22 - Mel's Stables. at 834 Wallace Rd., New Holland, Pa. From Rt. 23 in New Holland, go S. on Brimmer Ave., go 2 miles S. on New Holland Rd. to Hill Rd. Turn left on Hill Rd. Proceed 1.2 miles to sale on left. From Rt. 340 E. of Intercourse take New Holland Rd. 2.5 miles to Hill Rd., right on Hill Rd. to sale on left. Mel Hoover, owner.

OUTSTANDING AUCTION

20 Acres of Prime Land w/Strong Stream
ESTATE 2-DAY

Fri., June 9th, 1995 at 5:00 P.M.
Sat., June 10th, 1995 at 8:00 A.M.

Real Estate, Butcher Equip., Tools, Antiques, Collectibles
Estate of Mary A. Batz of Bethel, PA

LOCATION: Bethel Twp. Berks Co. Bethel, Pa. from I-78 take exit #3 south on Rt. 501 for 2 miles to sale on right. From Rt. 501 in Myerstown, Pa. go north 8 miles to sale site. Half way between Harrisburg & Allentown, Pa.



REAL ESTATE: Is zoned ag. with about 1000' rd. frontage, a 1 1/2 story house, two car block garage, a block barn, level land, all on 20 acres more or less. This property has potential for developing or a nice farmette. Upstairs has 2 B. Rms. & sewing rm., downstairs has kit/dining comb., living rm. bed rm, full bath. Oil hot water

heat, well & septic. For an appointment of this very desirable property, call auctioneer at (717) 933-5736.

TERMS OF REAL ESTATE: 10% down day of sale, Bal. in 60 days or less. Property will be offered at 12:00 noon, Sat., June 10th 1995.

Friday, June 9th at 5:00 PM: Butcher kettles, two butcher furnaces, sausage stuffer, ladles, meat hooks, kettle hooks, lard press, bone saws, large amount of butcher knives, set of Wilson knives, signed meat cleavers, butcher bench, weather vane, large amount of hand tools, hammers, forks, shovels, signed hatchets, asst. lg. barn chisels, bk. planes, asst. axes, barn hinges, asst. lumber, BB guns, barn jacks, wood bits, hand saws, log chains, power tools, Dynamark 11 HP. 42" cut riding mower, JD #110 riding mower, lawn cart, sprinkling can, hammer handles, asst. hardware, bench grinder, dig. Iron, asst. wrenches, ball bats, tool boxes, butcher kettle stands, & much more.

Sat., June 10th at 8:00 AM: Hand painted plank bottom chairs, Empire chest, shelf clock, oak claw feet round table, jelly cupboard, buttons asst., crocks, kero lamp, Gruber wooden box, butter churn, about 20 pocket knives, asst. quilt tops, 4 pcs. modern pine bed rm. suite, old apple cookie jar, asst. pocket watches, old Coke poster, child's oak roll top desk, old rocker, chest of drawers, old regulator clock, blanket chest. Rem. 22 rifle, Sears 20 ga S. gun, asst. jewelry, Flow Blue pcs., arrow hds., carnival pcs., green depression, press glass, old enameled ice box/freezer, GE washer, Hotpoint dryer, GE chest freezer, GE ref/freezer, side by side ref/freezer, towels & linens, asst. glassware, sm. child's rocker, marbles, old hat pin, German Bible, comforts, C.I. skillet, & much more.

NICE 1979 BONNEVILLE PONTIAC, 57,000 miles, loaded

TERMS: Cash or PA Check

AUCTIONEERS NOTE: This auction has something for everybody, a lot of nice things to be sold. Come spend the day at a good old country auction.



Auctioneer
Dwight D. Miller
AU002414L
Call (717) 933-5736

Executor **James E. Batz**
Executrix **Blanche A. Brubaker**
Esquire **David Batdorf**

FOOD BY WOMEN FELLOWSHIP LITTLE SWATARA CHURCH OF CHRIST