

**National Grain Market**

**ST JOSEPH, MO  
 MAY 17, 1995**

Wheat bids finished mostly lower on planting optimism and profit taking on the board. Corn bids extended gains due to continued rain delayed planting and good export demand. Slight weakness noted in bean pits stemmed from profit taking after yesterday's sharp gains and ideas corn acres may be switch to beans. Wheat 4 to 9 cents lower except Portland 4 cents higher. Corn 2 to 4 cents higher. Sorghum 2 to 7 cents higher. Soybeans 1 cent lower.

Spring wheat planting progress in parts of the Northern Plains and dryer weather expected, pressured wheat bids. Upcoming harvest pressure offered weakness as winter wheat crop still looking good. Export sales improved today but this week's orders have been small. Additional gains in corn bids were due to continued heavy rains and flooding in many areas of the Corn Belt. Forecasts call for more moisture throughout the week. Concerns that corn acres may be switched if wet conditions persist, added strength to bids. Export demand has been good this week and today's substantial purchase from South Korea was positive. Active fund buying on the board was also noted.

Soybean bids inched lower on ideas more beans may be planted due to wet weather in parts of the Corn Belt. Profit taking after sharp gains in Tuesday's trade, pressured bids. Export demand improved slightly with Taiwan's offer but sales are down.

Export demand:  
 Purchaser Commodity Tonnage Delivery date  
 Norway - EEP Hard Red Spring Wheat 36,000 October

Tunisia - EEP Durum Wheat 25,000 June  
 South Korea Corn 140,000 June-Aug  
 Taiwan Corn 18,000 June  
 Venezuela - EEP Barley Malt 2,500 July-Dec  
 South Korea Barley 14,150 July-Aug  
 Taiwan Soybeans 12,000 June  
 Total: Wheat 61,000 tonnes. Corn 158,000 tonnes. Barley Malt 2,500 tonnes. Barley 14,150 tonnes. Soybeans 12,000 tonnes.  
 Date Change Year ago  
 Truck bids: 05/17/95 05/16/95 05/18/94  
 Wheat:  
 Kansas City 4.05-4.10 dn 4 3.42-3.43  
 Minneapolis 4.29 3/4 dn 6 1/2 4.83 3/4  
 Portland 4.42-4.45 up 4 3.80-3.82  
 St. Louis 3.49-3.54 dn 9-4 3.18-3.21  
 Corn, U.S. No 2 Yellow:  
 Kansas City 2.63-2.64 up 4 2.81-2.84  
 Minneapolis 2.46 1/2 up 2 2.63 1/4  
 Southern Iowa 2.50-2.53 up 3-2 2.67-2.70  
 Omaha 2.48-2.50 up 2-3 2.66-2.68  
 Soybeans, No 1 Yellow:  
 Kansas City 5.62-5.63 dn 1 7.15-7.19  
 Minneapolis 5.51 up 3/4 6.94  
 Southern Iowa 5.56-5.61 dn 1 7.04-7.09  
 Cen IL Processors 5.66-5.77 dn 1 1/4 7.08-7.15  
 \*Truck bids for Kansas City, US No 1 Hard Red Winter Wheat, Ordinary Protein. Minneapolis, US No 1 Dark Northern Spring Wheat, 14 Percent Protein. Portland, No 1 Soft White Wheat, St. Louis, No 2 Soft Red Winter Wheat.  
 Futures Close:  
 Kansas City (July) Wheat 3.65 1/4 dn 4 3.27 1/4  
 Minneapolis (July) Wheat 3.74 3/4 dn 6 1/2 3.48 3/4  
 Chicago (July) Wheat 3.56 1/2 dn 4 3.24  
 Chicago (July) Corn 2.59 1/2 up 3 2.69

1/4  
 Chicago (July) Soybeans 5.72 dn 1 1/4 7.02  
 Export Bids: Barge or rail, Port of New Orleans or North Texas Gulf.  
 No 1 Hard Red Winter Wheat, Ordinary Protein  
 4.25 1/4 dn 4 3.79 1/4  
 No 2 Soft Red Winter  
 3.81 1/2-3.84 1/2 dn 7-8 3.38-3.42  
 No 2 Yellow Corn  
 2.82-2.82 1/2 up 1 1/2-unch 2.84-2.85  
 No 2 Yellow Sorghum  
 Rail 4.85-4.90 up 2-7 5.02  
 Barge 5.06-5.10 up 7-6 5.00  
 No 1 Yellow Soybeans  
 5.92-5.93 1/2 up 1/4 7.27-7.29  
 Source: USDA-Missouri Dept of Ag Market News, St Joseph, MO  
 Belinda Bird 816 238 0678 15:05c

**Pa. Grain**

**Monday, May 15, 1995**  
 Report supplied by PDA

COMPARED TO LAST MONDAY'S MARKET FOR SOUTHEASTERN, CENTRAL, AND SOUTH CENTRAL PA: CORN STEADY TO .05 HIGHER, SPOTS .10 HIGHER, WHEAT STEADY TO .08 HIGHER, BARLEY & EAR CORN MOSTLY STEADY, OATS STEADY TO STRONG, SOYBEANS UNEVEN, .05 HIGHER TO .10 LOWER.

**SOUTHEASTERN PENNSYLVANIA**  
 CORN NO. 2-Y RANGE 2.65-2.96, AVERAGE 2.80, CONTRACT FOR HARVEST 2.66-2.82; WHEAT NO. 2 RANGE 3.50-3.88, AVERAGE 3.66, CONTRACT FOR HARVEST 3.48-3.68; BARLEY NO. 3 RANGE 1.60-1.85, AVERAGE 1.73, CONTRACT FOR HARVEST 1.50-1.60; OATS NO. 2 RANGE 1.50-1.80 FEW REPORTED 1.90, AVERAGE 1.63, SOYBEANS NO.

1 RANGE 5.35-5.80, AVERAGE 5.55, CONTRACT FOR HARVEST 5.51-5.67; FEW REPORTED PER HUNDRED-WEIGHT BUCKWHEAT CONTRACT FOR HARVEST 10.90; EAR CORN RANGE 75.00-85.00, AVERAGE 79.43.  
**SOUTH CENTRAL PENNSYLVANIA**  
 CORN NO. 2-Y RANGE 2.60-2.90, AVERAGE 2.74; WHEAT NO. 2 RANGE 3.30-3.66, AVERAGE 3.37; BARLEY NO. 3 RANGE 1.55-1.90, AVERAGE 1.68; OATS NO. 2 RANGE 1.50-1.75, AVERAGE 1.57; SOYBEANS NO. 1 RANGE 5.25-5.50, AVERAGE 5.41; EAR CORN RANGE 65.00-80.00, AVERAGE 70.85.

**SOUTHEASTERN, CENTRAL & SOUTH CENTRAL SUMMARY**  
 CORN NO. 2-Y RANGE 2.55-2.96, AVERAGE 2.74; WHEAT NO. 2 RANGE 3.20-3.88, AVERAGE 3.53; BARLEY NO. 3 RANGE 1.55-1.90, AVERAGE 1.73; OATS NO. 2 RANGE 1.40-1.85, AVERAGE 1.62; SOYBEANS NO. 1 RANGE 5.25-5.80, AVERAGE 5.48; EAR CORN RANGE 65.00-85.00, AVERAGE 74.75.

**CENTRAL PENNSYLVANIA**  
 CORN NO. 2-Y RANGE 2.55-2.90, AVERAGE 2.66; WHEAT NO. 2 RANGE 3.20-3.71 FEW REPORTED 3.88, AVERAGE 3.48; BARLEY NO. 3 RANGE 1.70-1.90, AVERAGE 1.79; OATS NO. 2 RANGE 1.40-1.85, AVERAGE 1.65; SOYBEANS NO. 1 RANGE 5.30-5.55, AVERAGE 5.38; EAR CORN RANGE 66.00-70.00 FEW REPORTED 55.00, AVERAGE 66.83.

**WESTERN PENNSYLVANIA**  
 CORN NO. 2-Y RANGE 2.29-2.68, AVERAGE 2.51; WHEAT NO. 2 RANGE 3.30-3.60, AVERAGE 3.45; BARLEY NO. 3 RANGE FEW REPORTED 1.77,

AVERAGE 1.77; OATS NO. 2 RANGE 1.30-1.80, AVERAGE 1.54; SOYBEANS NO. 1 AVERAGE 5.09-5.31, AVERAGE 5.20; EAR CORN RANGE 54.00-55.00, AVERAGE 54.50.

**MONTH AGO**  
 CORN NO. 2-Y 2.62; WHEAT NO. 2 3.48; BARLEY NO. 3 1.79; OATS NO. 2 1.63; SOYBEANS NO. 1 5.55; EAR CORN 71.21.

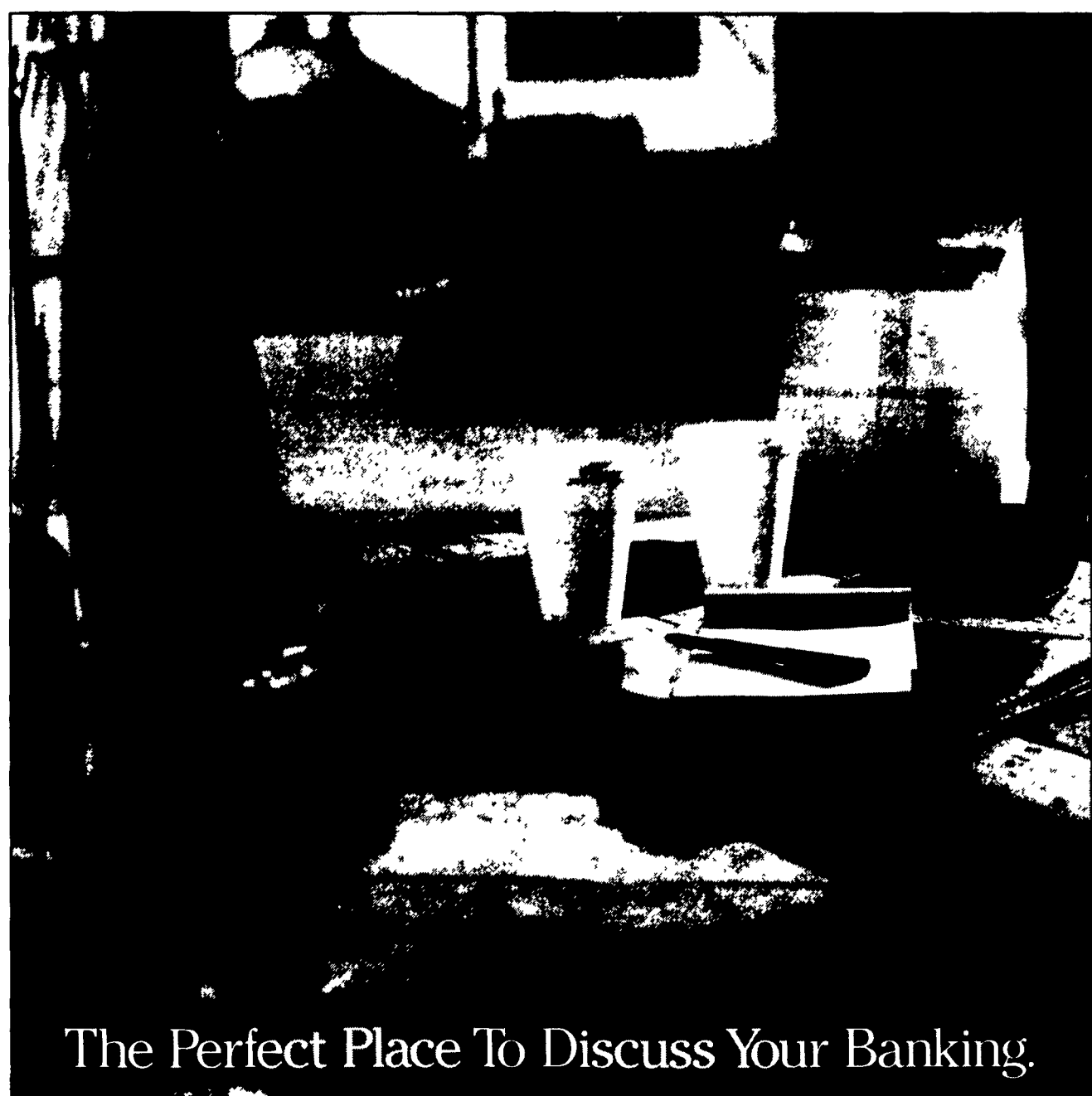
**YEAR AGO**  
 CORN NO. 2-Y 3.05; WHEAT NO. 2 3.35; BARLEY NO. 3 2.44; OATS NO. 2 1.69; SOYBEANS NO. 1 6.59; EAR CORN 88.10.

**New Holland Dairy**

**New Holland Sales Stables  
 Wednesday, May 17, 1995**

Report supplied by auction

DAIRY COWS 136; HEIFERS 52; BULLS 11. MARKET STRONGER.  
**LOCAL FRESH COWS**  
 625.00-1275.00.  
**LOCAL SPRINGERS** 650.00-1185.00.  
**FRESH HEIFERS** 600.00-1200.00.  
**UPSTATE LOADS FRESH**  
 610.00-1525.00.  
**UPSTATE LOADS SPRINGERS**  
 950.00-1125.00.  
**OHIO SPRINGERS** 735.00-1200.00.  
**LARGE SPRINGING HEIFERS**  
 950.00-1150.00, SMALL 450.00-875.00.  
**SHORT BRED HEIFERS**  
 500.00-950.00.  
**OPEN BREEDING AGE HEIFERS**  
 540.00-635.00.  
**SMALL OPEN HEIFERS**  
 340.00-510.00.  
**GRADE BULLS** 435.00-600.00, PURE-BREDS 525.00-935.00.



**The Perfect Place To Discuss Your Banking.**

When farmers like you have financial needs, you don't have to come to us, we'll come to you. After all, running a successful farm doesn't leave much time for running to the bank. It's this kind of personal attention that farmers in Lancaster County and surrounding areas have been getting from Bank of Lancaster County for over 125 years.

So if you need working capital, a way to finance machinery, land, livestock, buildings, or a loan tailored to specific needs, look to the bank that's committed

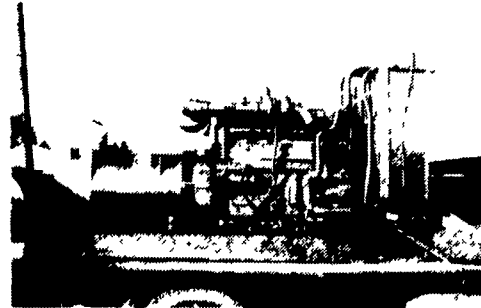
to your industry and to our area. At Bank of Lancaster County, decisions are made locally. And for you that means fast turnaround and flexible terms.

Why not give Bob Badger or Stan Michonski of our Agricultural Loan Division a call at (717) 397-7941? We're looking forward to talking to you about banking on your terms...on your farm.



**Bank of Lancaster County, NA**  
 The Better Bank.

Member FDIC



**GENERATORS**

Sales ★ Service ★ Rentals  
 \* Complete Generator Systems  
 \* PTO \* Portables \* 2-1600 KW  
 "We Service It If You Have It  
 And Sell It If You Need It"

34 W. Mohler Church Rd.  
 Ephrata, PA 17522

Tel: 717-738-0300  
 Fax: 717-738-4329



**BUYING AND SELLING  
 SOFT RED WHEAT  
 WHITE WHEAT  
 AND CORN**

**Picked Up and Delivered Bids  
 Available  
 Prices Quoted for Spot or Future  
 Delivery**

**PROMPT PAYMENT**

**ASK FOR  
 BILL KRUEGER  
 (800) 487-1474**

**WE WANT TO BUY  
 YOUR GRAIN**