

LANCASTER COUNTY LIVESTOCK MARKET AUCTION

Lancaster Livestock

LANCASTER, PA
MAY 16, 1995
Cattle Calves Hogs Sheep Goats
MONDAY'S AUCTION

967	34	329	548	256
EAST MONDAY				
991	43	458	1450	551
LAST YEAR				
1042	65	433	384	141

CATTLE: Slaughter steers 1.00 lower, instances 2.00 lower on Holsteins; slaughter heifers 50-1.00 lower; cows steady to weak; bullocks steady; bulls mostly steady. Supply included 76 percent slaughter steers, 9 percent slaughter heifers, 5 percent cows, with the balance bulls.

SLAUGHTER STEERS: High Choice and Prime 2-4 1175-1425 lbs 62.50-63.75, couple 64.50-65.75, couple lots 1490-1530 lbs 58.75-62.00; Choice 2-3 few 4 1175-1425 lbs 61.00-62.50, 1425-1550 lbs 56.25-61.50; few lots Choice 2-3 1030-1170 lbs 59.75-61.00; Select and low Choice 2-3 1050-1450 lbs 57.75-60.00.

HOLSTEINS: High Choice and Prime 2-3 1350-1550 lbs 54.50-56.75; Choice 2-3 1275-1500 lbs 51.50-54.50; Select 1-3 1160-1525 lbs 47.75-51.00; few Standard 1-2 1200-1300 lbs 45.00-47.00.

SLAUGHTER HEIFERS: Choice 2-3 1025-1250 lbs 55.25-59.25; one lot High Choice and Prime 2-3 1310 lbs 60.75; Select 2-3 950-1125 lbs 52.75-55.50.

COWS: LOW DRESSING BULK HIGH DRESSING Breaking Utility & Commercial 2-3 38.00-40.00 Cutter & Boning Utility 1-3 37.00-39.00 Canner & low Cutter 1-2 33.00-34.00 34.00-38.00

BULLOCKS: Choice 2-3 1150-1350 lbs 48.75-53.25, couple 57.00-61.25; Select 1-3 1100-1300 lbs 47.00-50.50.

BULLS: Yield grade 1 1200-2100 lbs 48.00-53.00, few 53.00-58.25; Yield grade 2 1000-1500 lbs 44.50-48.00.

CALVES: Vealers steady; slaughter calves not tested.

VEALERS: High Good and low Choice 150-300 lbs 60.00-80.00.

HOGS: Barrows and gilts 2.00-3.00 higher.

US 1-3 210-260 lbs 37.00-38.00

US 1-2 215-250 lbs 38.00-40.00

US 2-3 280-300 lbs 31.00-32.50

SOWS: Steady to 2.00 lower.

US 1-3 300-500 lbs 23.00-26.00

500-650 lbs 27.00-28.50

BOARS: All weights 20.00-22.00

SHEEP: Slaughter lambs steady to 5.00 lower; slaughter ewes 5.00-10.00 lower.

Supply included 60% new crop lambs, around 5% old crop lambs, with the balance slaughter ewes including yearlings.

NEW CROPLAMBS: Choice 1-2 40-80 lbs 90.00-110.00, 80-100 lbs 90.00-100.00; Choice 2-3 100-130 lbs 80.00-95.00; few Choice 25-40 lbs 100.00-125.00.

Vintage Livestock Auction

PARADISE, PA
May 16, 1995
Cattle Calves Sheep Goats

TODAY	572	779	0	1
LAST TUESDAY	569	707	5	2
LAST YEAR	841	778	7	6

CATTLE... USDA .. Supply included 45% slaughter steers, 44% cows ..sl. steers mostly steady, few sl. heifers fully steady, cows steady to firm, bullocks not fully tested, small supply bulls steady to weak.

SLAUGHTER STEERS: Choice 2-3 1100/1360 lbs. 60.75-63.00, few 63.00-63.50, High Choice and Prime 3-4 1200/1350 lbs. 61.85-63.85, Choice and Prime 2-3 1150/1425 lbs. 63.50-65.25, few 65.75-66.75, Select and Low Choice 2-3 1050/1400 lbs. 57.00-61.00, few Select 1-2 950/1350 lbs. 55.50-57.25.

HOLSTEINS: couple lots Choice 2-3 1300/1375 lbs. 63.10-64.85.

HEIFERS: Choice 2-3 1045/1160 lbs. 57.75-61.25, couple Choice and Prime 2-3 1160 lbs. 62.50.

COWS: Breaking Utility and Commercial 2-3 bulk 37.75-40.50, high dressing 40.50-52.75, Cutter and Boning Utility 1-3 low dressing 37.00-38.00, bulk 38.00-40.00, high dressing 40.00-41.00, Canner and Low Cutter 1-2 low dressing 34.00-37.00, bulk 37.00-38.50.

BULLS: Yield Grade No. 1 1200/1800 lbs. 46.75-48.75, No. 2 1000/1500 lbs. 41.25-44.75.

CALVES...Small supply vealers steady. Supply included 694 in graded sale of which 7% sold for slaughter.

VEALERS: High Good and Low Choice 70/110 lbs. 40.00-55.00, Standard and Low Good 65/80 lbs. 30.00-40.00.

RETURNED TO FARM: 40 head 120/125 lbs. Holstein bulls 119.00, 275 head 95/115 lbs. 123.00-131.00, 45 head 90/95 lbs. 114.00-115.00 and 25 head 85 lbs. 104.00 20 head small frame 110/115

SLAUGHTER EWES: Choice 2-3 35.00-60.00, few Yearlings 60.00-70.00; Utility and Good 2-3 20.00-40.00.

GOATS: All goats sold by the head. Billies: Large 90.00-125.00; Medium 75.00-100.00. Mutton: Large 70.00-90.00; Medium 60.00-70.00. Nannies: Large 60.00-80.00; Medium 45.00-60.00. Yearlings: Choice 60.00-70.00; Good 50.00-60.00. Kids: Good and Choice 30.00-40.00; Utility 20.00-30.00.

JLA/jlk

SOURCE: USDA Market News; Lancaster, PA

717/394-3490

Lancaster Livestock Auction

Wednesday's market report has been discontinued until further notice because of insubstantial receipts.

Dewart Livestock Auction

DEWART, PA
May 15, 1995

CATTLE 95.. PDA .. STEERS: few Select 57.00-60.75. HOLSTEINS: one Select 54.00. HEIFERS: one Choice 58.00.

COWS: Breaking Utility and Commercial 39.25-43.50, Cutter and Boning Utility 37.75-43.00, Canner and Low Cutter 31.50-37.50. Shells down to 25.50.

BULLS: few Yield Grade No. 1 1375/1750 lbs. 42.25-46.25.

FEEDER CATTLE: HEIFERS: few Medium Frame No. 1 300/675 lbs. 55.00-60.00.

CALVES 122...VEALERS: few Utility 60/85 lbs. 35.00-55.00.

FARM CALVES: No. 1 Holstein bulls 85/120 lbs. 92.50-122.50, No. 2 80/115 lbs. 55.00-85.00; No. 1 Holstein heifers 90/115 lbs. 177.50-207.50, few No. 2 70/100 lbs. 70.00-125.00. Beef cross bulls and heifers 70/100 lbs. 62.50-122.50.

HOGS 72...BARROWS AND GILTS: US 1-2 230/255 lbs. 36.75-38.00, US 1-3 230/260 lbs. 33.75-36.00, one US 2-3 280 lbs. 33.00.

SOWS: US 1-3 310/590 lbs. 24.00-29.75.

BOARS: one 20.50.

FEEDER PIGS 42...Few lots US 1-3 20/35 lbs. 24.00-30.00. --- per head.

SHEEP 0...NO MARKET TEST!

GOATS 5...Few Medium & Large 35.00-82.50. --- per head.

lbs. 114.00, 80 head 90/105 lbs. 103.00-107.00, and 50 head 80/85 lbs. 71.00-80.00; 20 head 100/115 lbs. Holstein heifers 200.00-209.00, 35 head 90/95 lbs. 185.00-192.00, and 10 head 70/75 lbs. 95.00, 40 head small frame 80/110 lbs. 172.00-180.00 and 13 head 70/75 lbs. 60.00.

SHEEP...NO MARKET TEST!

GOATS...NO MARKET TEST!

LEBANON VALLEY LIVESTOCK MARKET, INC.

1 mile East of Fredericksburg along Rt. 22

PHONE
JONESTOWN
(717) 865-2881

Flea Market Auction every Tuesday at 12:30, Tools, Eggs, Produce, Etc.

Buyers & Sellers Welcome

New Holland Livestock Auction

LANCASTER, PA
MAY 18, 1995
Cattle Calves Sheep Goats

TODAY	1343	458	263	107
LAST THURSDAY	1470	423	170	191
LAST YEAR	1552	466	223	281

CATTLE: Slaughter steers steady to 50 higher, most advance on Choice and Prime 1200-1400 lbs; slaughter heifers steady; cows 2.00-3.00 higher; bullocks fully steady; bulls steady, although Yield grade 1 not fully tested. Supply included 59 percent slaughter steers and 23 percent cows.

SLAUGHTER STEERS: High Choice and Prime 2-4 1250-1425 lbs 63.50-66.00; Choice 2-3 few 4 1125-1450 lbs 61.25-65.25, mainly 62.50-64.75; Choice 3-4 1450-1520 lbs 58.00-61.75; Select and low Choice 2-3 1150-1450 lbs 57.00-61.75, few 1475-1600 lbs 52.50-58.00; Select 1-2 1050-1350 lbs 52.00-57.00.

HOLSTEINS: High Choice and Prime 2-3 1300-1575 lbs 56.00-57.50; Choice 2-3 1250-1550 lbs 53.50-56.00; few Select 1-2 1200-1400 lbs 50.50-53.50.

SLAUGHTER HEIFERS: Choice 2-3 1025-1250 lb 55.75-59.50; Select 1-3 975-1150 lbs 53.50-55.00.

COWS: LOW DRESSING BULK HIGH DRESSING Breaking Utility & Commercial 2-3 39.75-42.50 42.50-45.75

Commercial 3-4 35.00-39.00 Cutter & Boning Utility 1-3 37.50-39.50

39.50-42.00 42.00-43.25 Canner & low Cutter 1-2 35.00-37.00 37.00-40.00

BULLOCKS: Few Choice 2-3 1050-1350 lbs 50.00-56.50.

BULLS: Yield grade 2 1200-1600 lbs 42.50-45.25; few yield grade 1 1500-1900 lbs 48.25-50.50.

CALVES: Few high Good and low Choice 200-400 lbs weak to 5.00 lower, small supply Standard and low Good steady. Supply included 40 head sold for slaughter.

VEALERS: Couple Choice 190-200 lbs 84.00-90.00; high Good and low 200-400 lbs 58.00-80.00; Standard and low Good 60-85 lb 35.00-45.00.

RETURNED TO FARM: Bulk 90-120 lbs Holstein Bulls 125.00-140.00, few 140.00-144.00, 75-90 lbs 100.00-125.00; small frame 90-115 lbs 95.00-112.00, 80-90 lbs 85.00-100.00; bulk 90-115 lbs Holstein 160.00-212.00; few small frame 85-100 lbs 125.00-160.00.

SHEEP: Slaughter lambs fully steady; slaughter ewes steady. Supply included 60 percent slaughter lambs with the balance slaughter ewes.

NEW CROP LAMBS: Choice 2-3 70-105 lbs 85.00-97.00, 30-60 lbs 100.00-117.00.

SLAUGHTER EWES: Choice 2-3 38.00-49.00; Utility and Good 2-3 22.00-35.00.

GOATS: All Goats sold by the head. Billies: Large 90.00-100.00, few 100.00-114.00.

Mutton: Large 78.00-84.00; Medium 65.00-75.00.

Nannies: Large 53.00-65.00; Medium 45.00-53.00.

Yearlings: Good and Choice 46.00-58.00.

Kids: Good and Choice 28.00-40.00.

JLA/jlk

Lancaster County Weekly

LANCASTER, PA
MAY 19, 1995
Cattle Calves

THIS WEEK	3100	1275
LAST WEEK	3285	1173
LAST YEAR	3688	1324

CATTLE: Slaughter steers weak to 50 lower, recovering some of the early loss on Thursday; slaughter heifers 50-1.00 lower; cows 1.00-2.00 higher; bullocks steady; bulls mostly steady, although Yield grade 1 not tested late. Supply included 58 percent slaughter steers, 5 percent slaughter heifers, 20 percent cows, 5 percent bulls, with the balance feeders.

SLAUGHTER STEERS: High Choice and Prime 2-4 1175-1425 lb 62.50-66.00, mainly 63.00-65.50; Choice 2-3 few 4 1100-1450 lb 61.00-64.50, few 64.50-65.25; Choice 3-4 1400-1550 lb 58.00-61.75; Select and low Choice 2-3 1150-1450 lb 57.00-61.75, few 1475-1600 lb 52.50-58.00; Select 1-2 1050-1350 lb 52.00-57.00.

HOLSTEINS: High Choice and Prime 2-3 1300-1575 lb 55.00-57.50; Choice 2-3 1250-1550 lb 53.50-56.00; Select 1-2 1160-1525 lb 50.00-53.50; few Standard 1-2 1200-1300 lb 45.00-48.00.

SLAUGHTER HEIFERS: Choice 2-3 1025-1250 lb 55.25-59.50; one lot High Choice and Prime 2-3 1310 lb 60.75; Select 1-3 950-1150 lb 52.75-55.50.

COWS: LOW DRESSING BULK HIGH DRESSING Breaking Utility & Commercial 2-3 38.50-42.50 42.50-45.75

Commercial 3-4 35.00-39.00 Cutter & Boning Utility 1-3 37.00-39.50

39.50-42.00 42.00-43.25 Canner & low Cutter 1-2 34.00-37.00 37.00-40.00

BULLOCKS: Choice 2-3 1050-1350 lb 48.75-54.00, couple 55.00-61.25; Select 1-3 1100-1300 lb 47.00-50.50.

BULLS: Yield grade 1 1200-2100 lb 48.00-53.00, few 53.00-58.25; Yield grade 2 1000-1600 lb 42.50-48.00.

CALVES: Vealers steady; slaughter calves not tested. Bulk of supply sold to return to farm.

VEALERS: Couple Choice 190-200 lb 84.00-90.00; high Good and low Choice 200-400 lb 58.00-80.00, 70-110 lb 40.00-55.00; Standard and low Good 60-85 lb 30.00-45.00.

RETURNED TO FARM: Bulk 90-120 lb Holstein bulls 114.00-140.00, few 140.00-144.00, 70-85 lb 100.00-125.00; small frame 90-115 lb 95.00-112.00, 80-90 lb 71.00-100.00. Bulk 90-115 lb Holstein heifers 160.00-212.00; small frame 80-110 lb 125.00-180.00.

JLA/jlk

SOURCE: USDA; Market News Office; Lancaster, PA.

(717/394-3490)

HAY, STRAW, & CORN — SALE —

Sale Starts Every Friday At 10 AM

GREEN DRAGON MARKET & AUCTION

955 N. State St.
Ephrata, Pa. (717) 738-1117
1 mile North of Ephrata on N. State St.
Out of State Buyers-Cash or Certified Check Only



B&R CATTLE CO.

RD 1, Marietta, PA
17547

Office Phone:
(717) 653-8164

Specializing in Stockers & Feeders

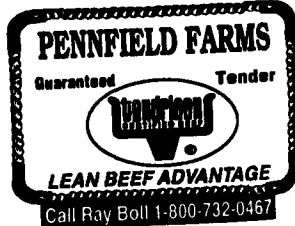
JOHN BOWMAN
ph. (717) 653-5728

RON RANCK
ph. (717) 656-9849

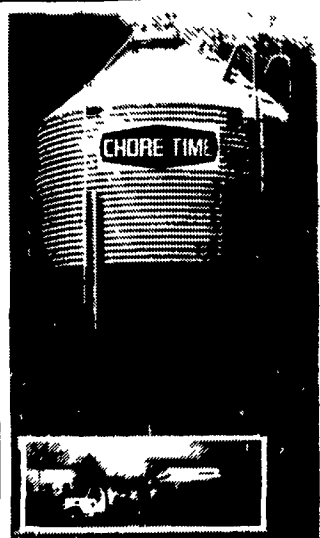
PHONE
JONESTOWN
(717) 865-2881

Flea Market Auction every Tuesday at 12:30, Tools, Eggs, Produce, Etc.

Buyers & Sellers Welcome



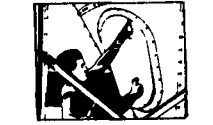
Get more capacity and better service from Chore-Time's New Next Generation bin



High Capacity 40' roof (left) allows more storage and stays cleaner than conventional 30' roof (right)



Hydro-Shield™ Weather Guard prevents water from running down hopper



ACCESS PLUS™ permits easy clean out of the bin from the ground.

Contracts Available Call For Information

■ Breeder ■ Pullets ■ Broilers
■ Layer ■ Turkey ■ Hog Finishing

Call For Our Free Brochure "What Is Contract Production?"

Replace your bulbs and save electricity with SCREW IN FLOURESCENT LIGHTS

5-7-9 Watts 5.49 ea. 13 Watts 5.79 ea.

Light Bulbs 25 to 100 Watts 34¢ Ea. Brass Base - 5000 Hrs.

In Stock- 36" & 48" Wide Kraft Paper • Made in USA

Northeast Agri Systems, Inc.
Flyway Business Park
139A West Airport Road
Lititz, PA 17543
Ph (717) 569-2702
1-800-673-2580

VINTAGE SALES STABLES, INC.

SALE TUESDAYS

10:30 A.M.
SLAUGHTER CATTLE AUCTION- STEERS, BULLS, HEIFERS, COWS, FEEDER CATTLE

7:00 P.M.
CALVES, SHEEP, GOATS
•GET CALVES IN EARLY- OUR STATE GRADER STARTS AT 10:30 A.M.

Selling Feeders Every Tuesday At Approx. 1 PM

FOR MORE INFORMATION CONTACT

L. ROBERT FRAME, SR., PRESIDENT
BUS (717) 442-4181 BUS (717) 768-8204
HOME (215) 458-8518
IRWIN MARTIN, FIELD REP.
(717) 733-7434
KENNETH E. HERSHEY, FIELD REP.
(717) 442-4874

TRUCKING SERVICE
AVAIL-LOCAL & LONG DISTANCE
(RT. 30, 10 MILES EAST OF