

**TRACTORS**

MF 1020, 21 hp, diesel tractor w/warranty & new loader  
 MF 265, diesel, 8 spd., 28" rubber cab, H/A  
 MF 245 overhauled, new paint & rubber, sharp  
 MF 180 diesel, wide front  
 MF 165 gas loader  
 MF 165 38" rubber, good running tractor  
 MF 135 gas, good running  
 MF 35 good running tractor  
 Ferguson 20 w/engine overhaul  
 MF 846 loader, quick-tach

**EQUIPMENT**

NH 847 round baler, auto tie  
 NH 275 w/thrower  
 NH 489 haybine  
 95 Gehl Grinder Mixer, like new  
 JD 1240 4R corn planter  
 IH 510 7x18 drill w/grass seed box  
 MF 880 spring reset plow, 4x16  
 Taylorway 7 tooth soil saver  
 Cultipackers, 12', 14' and different sizes  
 IH 3 pth 9' field cultivator  
 Gravity box and gear  
 Rotary mower  
 Used Brillion cultipacker and cultumulcher parts  
 Packer pups  
 New farm and corral gates, also hay feeders

MF Tractor parts Dismantling: 20, 30, 35, 40, 50, 65, 85, 90, 135, 150, 165, 175, 178, 180, 283, 285, 399 4WD, 1080, 1085, 1100, 1130, 1105, 1135, 1150 w/cab, 1155, 2805, 3680, MH 22, 44

**NOLT'S EQUIPMENT**

403 Centerville Rd., Newville, PA 17241  
 off 81 exit 11, 2 miles N on 233

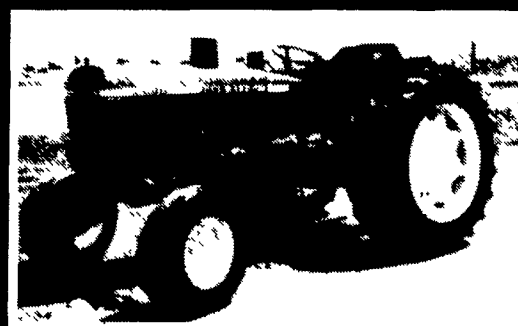
**(717) 776-6242 No Sunday Calls**

No Out-Of-State Personal Checks We Ship UPS



**FOR SALE**

**1991 Case Int. Magnum Tractor 7130**  
 4-WD, 900 Hrs., 20.8-42 Tires, 4 Remotes, Loaded with Extras, Excellent Condition.  
**410-343-1190**



**JD 2640**

Diesel Turbo, 88 hp. hi-lo, 2,500 hrs.  
**\$8,700**

**KEYSTONE TARPS**

SERVICE AND SALES  
 Is A Manufacturer Of Custom Tarps

- Systems
- Load Straps
- Tarp Straps
- Gloves
- Storage Covers
- Used Railroad Ties

**1-800-798-TARP (8277)**  
 Fax 717-435-0036 717-435-0752

**Bale Basket**  
 New Never Used  
 Delivery Available  
**\$1795.00**  
**315-893-7209**

**OVER 100 NEW KUBOTA TRACTORS IN STOCK!**



**FINANCING OR CASH DISCOUNTS AVAILABLE**

**WE SHIP PARTS UPS**

**TRACTORS & EQUIPMENT**

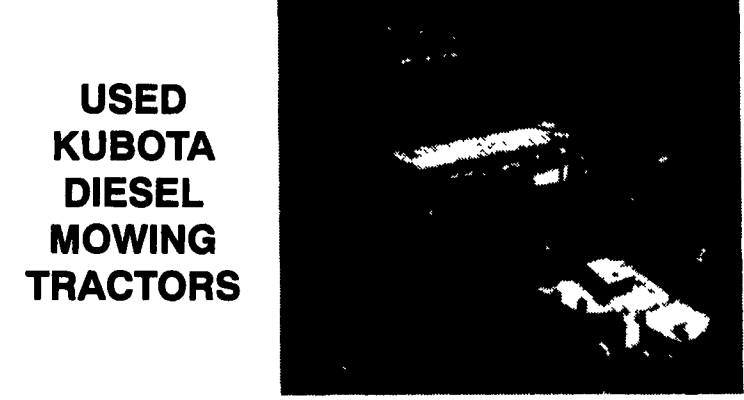
**CALL FOR DETAILS ON LEASING**

**LEBANON**  
 Rt. #7, Box 408, Lebanon, PA 17042  
 Rt. 419 1 mile West of Schaefferstown  
**717-949-2000**

**STORE HOURS**  
 MONDAY-FRIDAY 7:30-6:00  
 SATURDAY 7:30-12:00  
**2 Locations**

**LANCASTER**  
 1980 Fruitville Pike, Lancaster, PA 17601  
 At Route 30 & Fruitville Pike  
**717-569-2500**

**USED EQUIPMENT - Check for New Additions Weekly**



**USED KUBOTA DIESEL MOWING TRACTORS**

**TRACTORS:**

24152 Kubota B7100 HSE 2WD, Hyst. w/5' Mid-Mower, 16 HP Diesel	\$5,995
24171 Kubota B7100 HSD, 4WD, Hyst., Turf Tires, w/5' Mower, 60 Hrs.	\$9,350
24561 Kubota B7100 HSE, 16 HP Diesel, Hydro w/48" Mid Mower	\$5,575
24797 Kubota B6100DT, 4WD, w/48" Mid Mower, 14 HP, 3 cyl Diesel	\$4,500
24337 Kubota B6100HSE 14 HP, Diesel, Hydro w/5' Belly Woods Mower	\$4,995
24228 Kubota B7100 HSE 16 HP, 3 Cyl Diesel, Hyst Trans w/60" Mower	\$5,995
24350 Kubota G-4200H 12 HP Diesel L G T. w/ 44" Mower & Grass Catcher	\$3,495
24486 Kubota L-2550 GST, Diesel, 4WD, w/Loader, 227 Hrs	\$13,750
24523 Kubota 2950 DTW 32 7 HP Diesel 4 w/D Shuttle Trans, Turf Tires, 321 Hrs, Cab, New Warranty	\$16,450
23380 Ford "8N" 3 Pt PTO	\$2,325
24822 Ford 1710 26 HP, 4WD, Diesel w/Loader, 220 Hrs. (sharp)	\$12,995
24642 Ford 1720 4WD, 26 HP, Diesel, 4 W/D, Syn Shuttle Trans Loader, Remote, Good Cond.	\$12,975
24445 Ford Jubilee w/Sauder Loader and Snow Bucket	\$4,495
22434 NAA Ford Tractor w/Loader 32 HP w/CAT 1 3 Pt	\$3,975
24719 John Deere 935 diesel, 60" Frt. mower, w/catcher, 289 hrs	\$10,800
24696 Wheel Horse LT-1100 w/mower	\$750
24178 Wheel Horse 520H LGT w/42" & 50" Mower & Dozer Blade	\$2,995
24702 Wheel Horse 310-5 L & G Tractor w/36" Mower, Very Good Cond	\$1,350
22101 Simplicity 6218 L&G Tractor - 18 HP Twin Cyl., Variable Speed 48" Mower	\$1,480
21955 Snapper Comper Lawn Tractor Rear Engine Model, 26" Mower w/Bagger	\$350
23464 Simplicity GardenTrac, 14 HP, 44" Mwr, Elec Lift, 42" Fr Bld 36" Tiller, Like New	\$3,950
20988 Gilson Lawn Tractor 11 HP, 38" Mower, Gear Drive.	\$465
21885 Lawn Chief 6-830 Tractor, 8 HP, 30" Mower	\$365
24525 YAMMAR 146, 2WD, POWER SHIFT W/54" Front Blades & 50" Mower, Like New	\$3,500
23268 Cub Cadet w/Mower	\$975
24709 Cub Cadet 822 w/Kubota Diesel/Engine, w/50" Mower, 618 Hrs	\$2,995
24725 Cub Cadet Super Tractor, 2182, 21 HP, w/5" Mower (Like New)	\$4,995

**MOWERS:**

24827 Kubota RC60-71B, 5' Mid Mower to fit B-7100 HST, (Like New)	\$1,495
24096 Kubota RE 48-62F Mid Mower For B-5200, 6200, 7200 Gear Drive	\$795
24273 Kubota MR-4800 4' Mid Mower to fit B6100 & B7100 Hyst Tractors	\$495
23776 Kubota RC-60-F24 Mower 5' Mower Fair Condition	\$650
23520 Kubota W-5021-SC Walk Behind Mower 5 HP, 21" Self Pro., Grass Bag, <b>SOLD</b>	\$555
23308 Kubota RC60-72 Mower 60" Mower, Gear w/Clutch, Good Condition	\$775
22993 Kubota RC-60 F-24 Mower 5' Frt. Cut, w/Good Cond	\$995
22776 Kubota RC60-72H Mower 5' Mid-Mt. Finish Cut For Parts	\$275
22146 Kubota RC60-82H Mower 5' Mid-Mower, Fits B-8200 HST Tractors, Never Used	\$1,500
23395 RC-64B 54" Kubota Mid Mower Fits B-1550 & B-1750	\$1,095
24837 Kubota RC 64-B w/Grass Catcher To Fit B1550 or B1750 Kubota	\$1,595
23974 D&E Almo Flail Mower	\$2,495
23945 HO726 John Deere 72" Belly Mower to fit JD 750 or JD 850	\$695
24331 JD Model 1008 - Brush Cutter, 10 Ft., 3 Pt	\$2,395
24311 Woods RM-600, 3 Pt., Finish Mower, 4 Wheels (Never Used)	\$1,795
15184-15185-15354 Woods F35 Mower, 5' Mid-Mount, Fits Ford 1510 Tractor, New	\$895
23430 L-308-K22 Woods 6' Belly Mower Fits Kubota L-225 and L-245 Tractors <b>SOLD</b>	\$395
24091 Woods RM-400 3 Pt. Finish Mower	\$695
24469 RM-59 Woods 5' Finish Mower, w/Front Roller	\$775
15186 Woods F35 Mower, 5' Mid-Mount, Fits Ford 1710 Tractor, Brand New (Retail \$1,665)	\$695
22608 Woods L50-K18 Mower 5' Mid-Mt w/Caster, Fits Kubota L185 & 245 Tractors	\$575
24127 Woods RM-42 UB, e e w., 3 Pt Mower To Fit B6000 Kubota	\$795
24823 Ford 730A, 3 pt., 6' Mower, Real Good Condition	\$1,350
24087 Ford -Jacobson Mower, 42" Mower to fit Ford or Jacobson, Lawn & Garden Tractors	\$125
24470 3 Section Large Worthington Reel Mower	\$695

**BLADES:**

24335 Ford 702A Frt. Blade To Fit 1110 & 1210 Ford Tractor	\$595
21854 Kubota G-2000 Blade, 48", Front Mount, Fits G-200 Series Tractors	\$150
24432 Landpride 5' Spl. Blade	\$175
M0309 Lehara F-1300 Blade 6' Front Mt., H D Fits Ford 1300, 1500, 1700 & 1900 Tractors	\$695
24272 Woods 5', 3 pt., Rear Blade	\$175

**VAC UNITS:**

24236 3 Pt. PTO, Trac-Vac Blower Unit	\$395
21136 Kubota G-3008 Grass Catcher To Fit 48" LGT Mower	\$335
18204 Kubota G-3008 Vac System L&G Fits G Series Tractors With 48" Mower	\$335
24378 886 PTO, 3 pt., Vac w/Large Cart	\$685

**MISCELLANEOUS:**

24718 Kuhn L50 Tiller w/gauge Wheels 63" HD, 3 pt	\$1,295
24641 8x12 2 Axle Trailer	\$1,095
(Coming In) Kubota 5,000 w. generator (Like New)	\$1,450
(Coming In) 8 HP Troy-Bilt Tiller (Like New)	\$1,495
(Coming In) International 2 Axle, 7,000 GVW Trailer w/Box sides <b>SOLD</b>	\$1,995
24587 Kubota B-748-A Snow Blower, Frt Mtd., w/Elec Clutch	\$575
24161 Olathe "89" Silt Seeder Good Shape	\$1,995
23672 New Kelly BBE-8112 B. Hoe Bucket	\$160
23337 Brizly CC-100 Cultivator	\$100
22987 Brillion 6L84-01 Seeder 64" Mower Size	\$895
23789 Sears Tow Behind Sweeper 32" Mower, good Shape	\$195
23536 International 9 Ton, 3 Axle, Ramps Fold Up, New Deck and Tires	\$2,750
23436 Agri-Fab Dump Cart, Never Used, 10 Cu Ft.	\$175
24472 5 ft. Garber Pull Type Drop Spreader	\$175
24726 Brillion 5' Primary Seeder (Real Good)	\$1,795
24801 Landpride, 6', 3-pt., Primary Seeder	\$1,575
24824 3 pt., 6' Rear Blade w/Gauge Wheel	\$175
24654 4x8 Eric Single Axle Trailer w/26" High Sides	\$395

**STOUFFER BROS. INC.**

1066 Lincoln Way West, Chambersburg, PA  
 Phone 717-263-8424

**FORAGE**

Gehl CB400 Harvester  
 Gehl 1000 w/2 Row & Pickup  
 Gehl 1250 w/3 Row head & Pickup  
 IH 550 Harvester  
 Gehl 1580 Blower "Like New"

Gehl 72 Flail Chopper  
 NH 718 w/2 row  
 JD 125 Box  
 GEHL 610 Forage Box  
 (3) Gehl 960 Forage Boxes-18 ft.

**PLANTERS**

IH 400 Cyclo Planter

**MOWER CONDITIONERS**

Hesston 6200 Self-Propelled 12 Ft.-Very Good Condition  
 Vicon 281 Disc Mower Conditioner

NH 495 Haybine  
 NH 495 Mower  
 Hesston 1150 Mower Conditioner

**SKID LOADERS & UTILITY**

Case 1845 Skid Loader  
 Ovation 440  
 Case 1818 Unloader  
 IH 4130 Unloader

Case 580E Backhoe, 4WD  
 Case 450B Crawler/Loader  
 Case 1845 Special Skid Loader  
 Gehl 4610 Skid Loader

**MISCELLANEOUS**

Vicon 300 Tedder Rake  
 Oliver 62T Baler w/Thrower  
 IH 7' Flail Mower

Vicon H-1050 7 Wheel Rake  
 GEHL MX95 Grinder/Mixer  
 NH 357 Grinder/Mixer

**TRACTORS**

David Brown 1212  
 Ford 4000  
 Case 1410

Case 530 CK W/Loader  
 Case 990 w/ Loader

**LAWN & GARDEN**

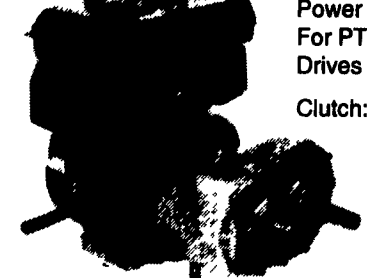
Dixon 311 w/CASOLD  
 White Field Boss 16  
 Tractor w/Attachments  
 Wheelhorse 312-8 w/Mower  
 Ingersoll 4016 Tractor  
 Ingersoll 3016 w/48" Mower  
 Kubota B-1750 Hsd w/Loader

Case 444 w/48" Mower  
 JD 214  
 Ingersoll 220  
 Ariens Rider  
 Cadet 382 Hy**SOLD** Bagger  
 Ingersoll 222 Tractor  
 Case 222 Tractor  
 Cub Cadet 782

Sales, Parts & Service For... CASE UTILITY • GEHL • VICON • WFE • KUBOTA • HESSTON • SAME

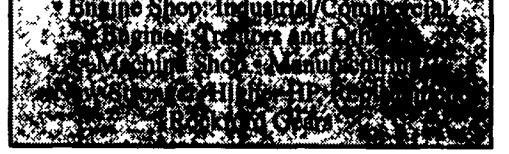
**NEW CLUTCH REDUCTION FOR SMALL ENGINES**

Fits Robin, Kawasaki, Honda, Kohler And Others



Power Transmission For PTO & Other Drives  
 Clutch: 6-1 Ratio

- FEATURES:**
- Aluminum Housing and Cover
  - Carefully Constructed Clutch
  - Helical Gears
  - Accessory Shaft for Live Hydraulics
  - Use on Harvesting, Industrial and Commercial Equip.



**BEILER ENGINE & MFG.**

1622 Georgetown Rd. Any. Service  
 Christiana, PA 17509 (717) 867-2941

**USED EQUIPMENT**

**COMING IN....**  
 IH 990 7' mower conditioner

IH 886 **SOLD** for  
 Ford 8600  
 Woods M5 Dixie 5' rotary cutter

Taylor-Way 13' offset disc w/cushion gangs, very good  
 NH 68 baler w/50 thrower, good condition  
 Int. #14 hay rake  
 Glenco 12' pull-type field cultivator

Unverferth gravity boxes in stock

We Ship Parts UPS Daily

**BANGOR IMPLEMENT**

6 Flicksville Rd., Bangor, PA 18013  
 610-588-5922 or 610-588-5924

